

39205 COUNTRY CLUB DR.  
FARMINGTON HILLS, MICHIGAN

HI-TECH FOR SUBLEASE  
7,090 Square Feet Available



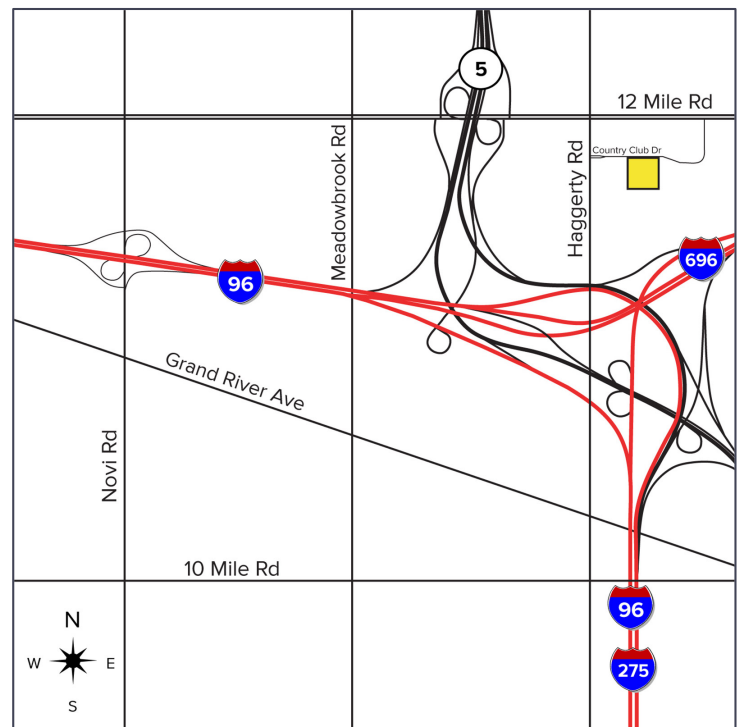
**SIGNATURE  
ASSOCIATES**  
KNOW SIGNATURE | KNOW RESULTS

## DISCOVERY CENTRE BUILDING C



### PROPERTY FEATURES

- 7,090 square feet available
- 6,800 square feet of office
- 14' clear height
- (1) 12x14 grade level doors
- Zoned IRO
- Sublease opportunity can provide short-term or long-term solutions
- Space includes 11 private offices, break room, training room, 26 cubicles and warehouse with a roll-up door
- Office furniture is negotiable
- Lease Rate: \$10.95/sq.ft. NNN



For more information, please contact:

**JEFF LEMANSKI**  
(248) 359 0641  
jlemanski@signatureassociates.com

**SCOTT ELLIOTT**  
(248) 948 4182  
sellott@signatureassociates.com

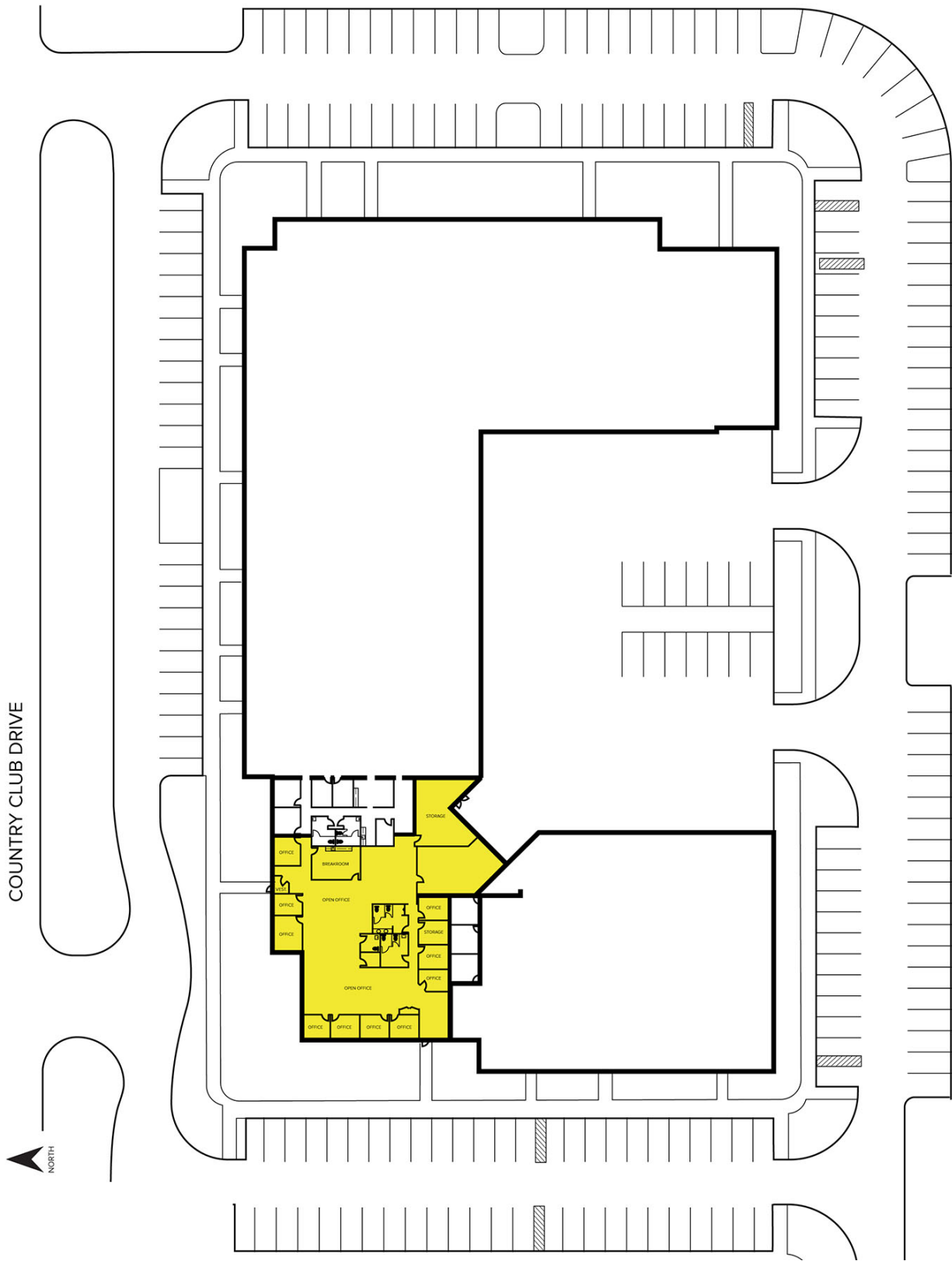
**SIGNATURE ASSOCIATES**  
One Towne Square, Suite 1200  
Southfield, MI 48076  
www.signatureassociates.com

# 39205 Country Club Dr. – Farmington Hills, Michigan

## Hi-Tech For Sublease

7,090  
Square Feet  
AVAILABLE

### Site Plan



For more information, please contact:

**JEFF LEMANSKI**

(248) 359 0641

[jlemanski@signatureassociates.com](mailto:jlemanski@signatureassociates.com)

**SCOTT ELLIOTT**

(248) 948 4182

[selliott@signatureassociates.com](mailto:selliott@signatureassociates.com)

**SIGNATURE ASSOCIATES**

One Towne Square, Suite 1200

Southfield, MI 48076

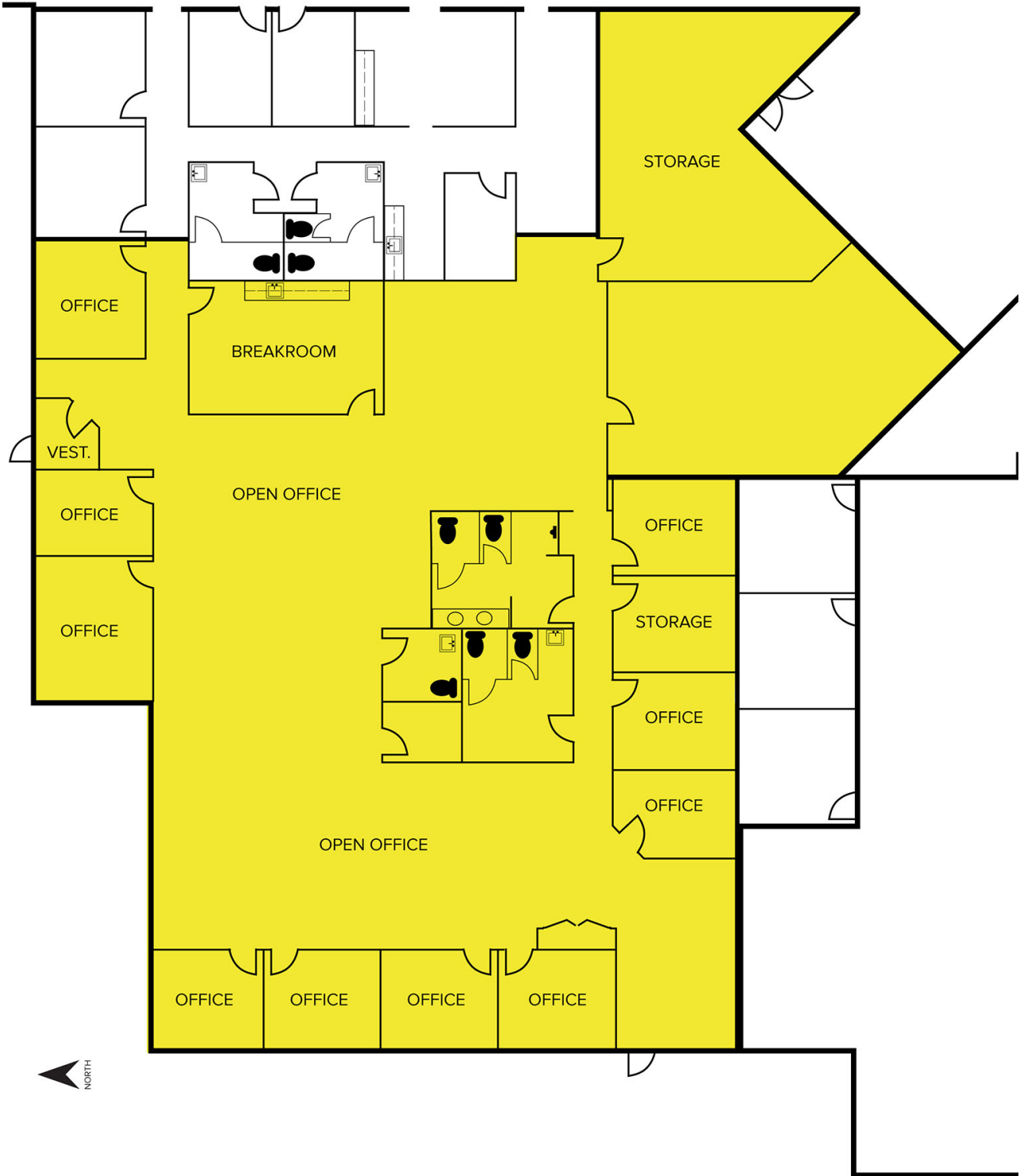
[www.signatureassociates.com](http://www.signatureassociates.com)

# 39205 Country Club Dr. – Farmington Hills, Michigan

## Hi-Tech For Sublease

7,090  
Square Feet  
AVAILABLE

### Floor Plan



For more information, please contact:

**JEFF LEMANSKI**  
(248) 359 0641  
jlemanski@signatureassociates.com

**SCOTT ELLIOTT**  
(248) 948 4182  
sellott@signatureassociates.com

**SIGNATURE ASSOCIATES**  
One Towne Square, Suite 1200  
Southfield, MI 48076  
www.signatureassociates.com

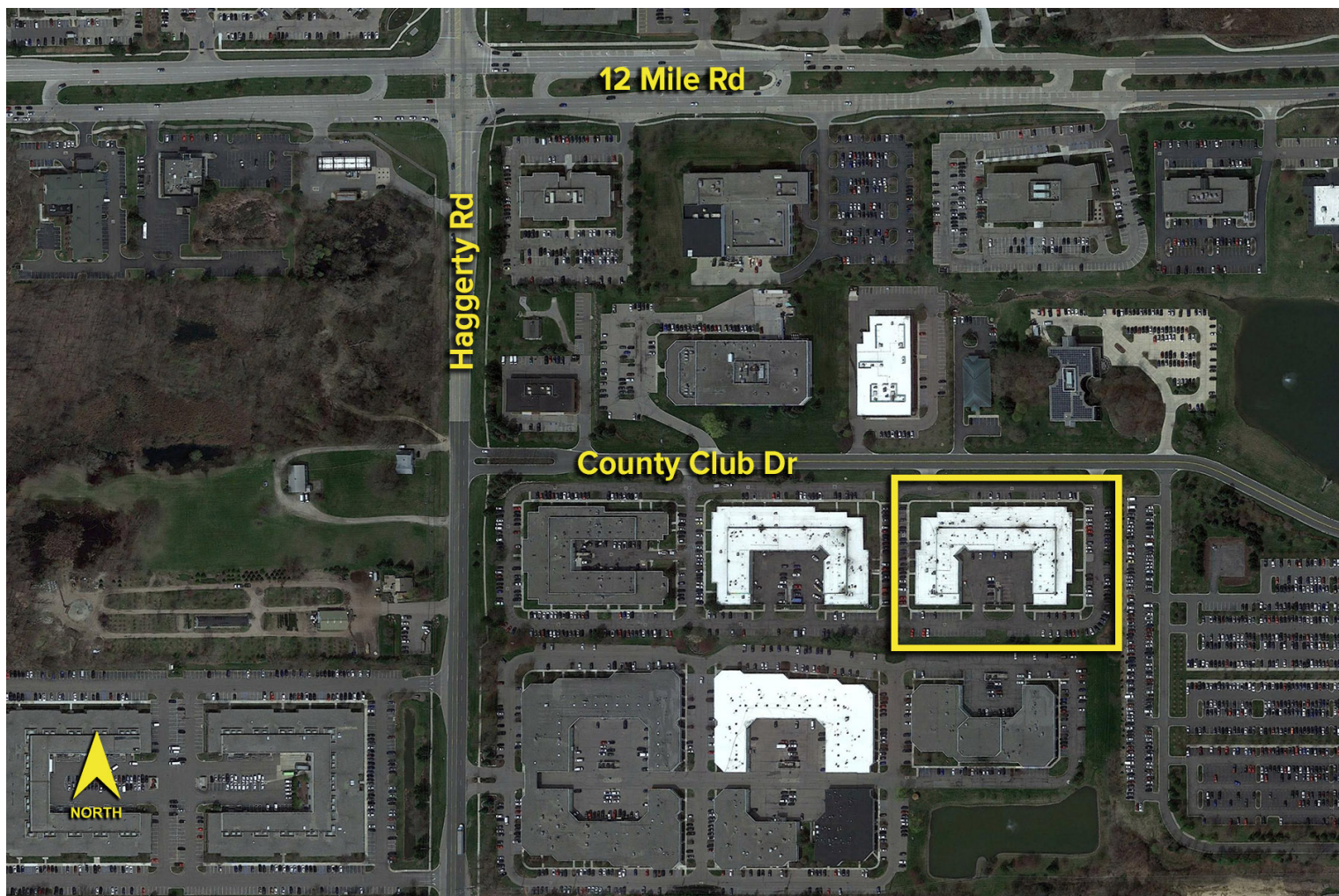
Information is subject to verification and no liability for errors or omissions is assumed. Price is subject to change and listing withdrawal.

# 39205 Country Club Dr. – Farmington Hills, Michigan

Hi-Tech For Sublease

7,090  
Square Feet  
AVAILABLE

Aerial



For more information, please contact:

**JEFF LEMANSKI**

(248) 359 0641

[jlemanski@signatureassociates.com](mailto:jlemanski@signatureassociates.com)

**SCOTT ELLIOTT**

(248) 948 4182

[selliott@signatureassociates.com](mailto:selliott@signatureassociates.com)

**SIGNATURE ASSOCIATES**

One Towne Square, Suite 1200

Southfield, MI 48076

[www.signatureassociates.com](http://www.signatureassociates.com)