

25849-25921 MEADOWBROOK
NOVI, MICHIGAN

HI-TECH FOR LEASE
2,250 - 8,864 Square Feet Available



**SIGNATURE
ASSOCIATES**
KNOW SIGNATURE | KNOW RESULTS

NOVI TECHNICAL CENTER



PROPERTY FEATURES

- 2,250 - 8,864 square feet available
- Complex professionally managed by Signature Associates
- Located off Meadowbrook Road between Grand River and I-696
- Large windows, dedicated shipping court yard, excessive parking at front door, nice park setting and attractive landscaping
- Aggressive lease rates



For more information, please contact:

JASON KELMIGIAN
(248) 359 0629

jkelmigian@signatureassociates.com

DAN MORROW
(248) 799 3144

dmorrow@signatureassociates.com

SIGNATURE ASSOCIATES
One Towne Square, Suite 1200
Southfield, MI 48076
www.signatureassociates.com

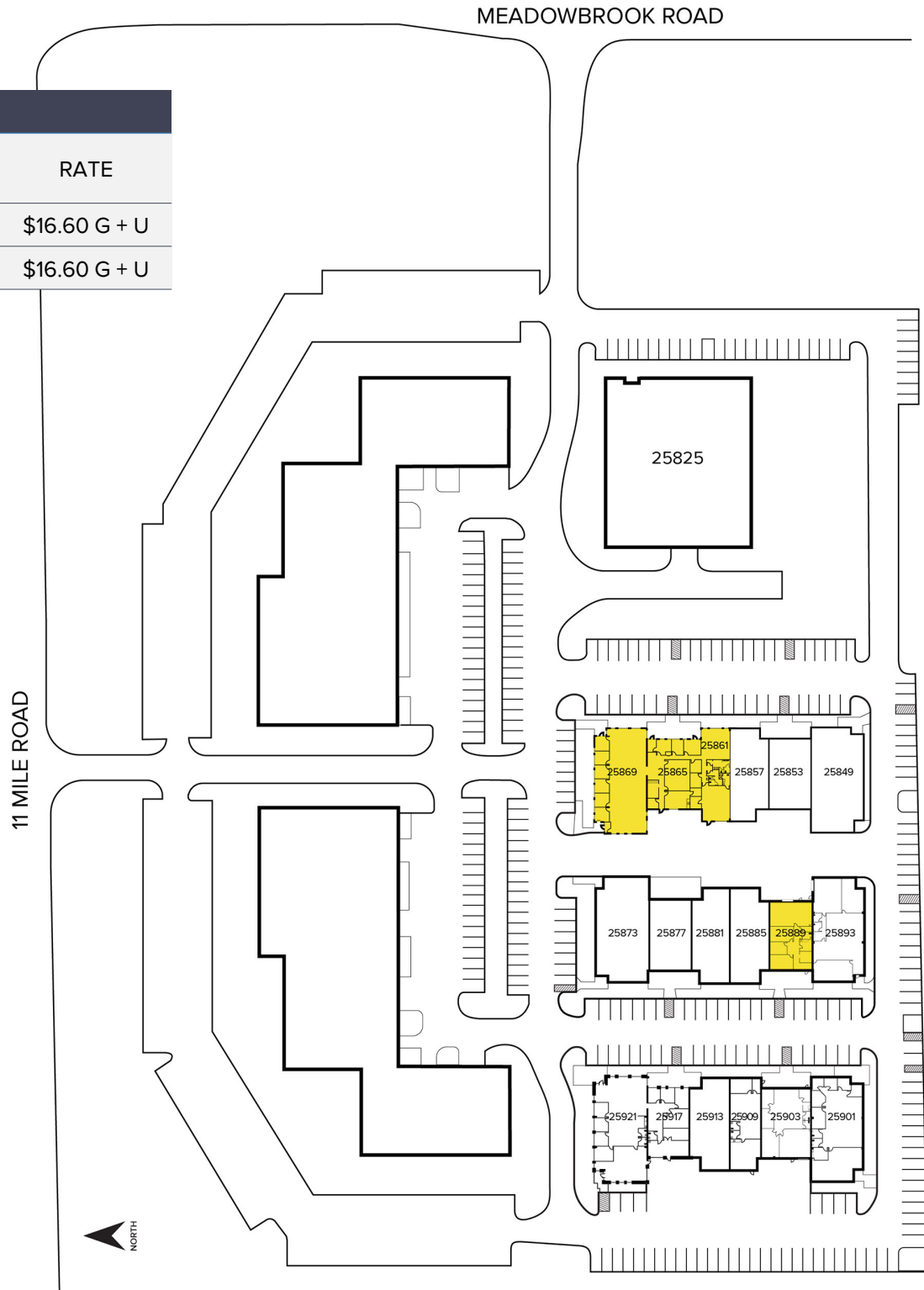
25849-25921 Meadowbrook Road – Novi, Michigan

Hi-Tech For Lease

2,250 - 8,864
Square Feet
AVAILABLE

Site Plan

AVAILABILITY			
UNIT	TOTAL SF	OFFICE SF	RATE
25861-69	8,864	7,964	\$16.60 G + U
25889	2,250	1,462	\$16.60 G + U



For more information, please contact:

JASON KELMIGIAN

(248) 359 0629

jkelmigian@signatureassociates.com

DAN MORROW

(248) 799 3144

dmorrow@signatureassociates.com

SIGNATURE ASSOCIATES

One Towne Square, Suite 1200

Southfield, MI 48076

www.signatureassociates.com

25849-25921 Meadowbrook Road – Novi, Michigan

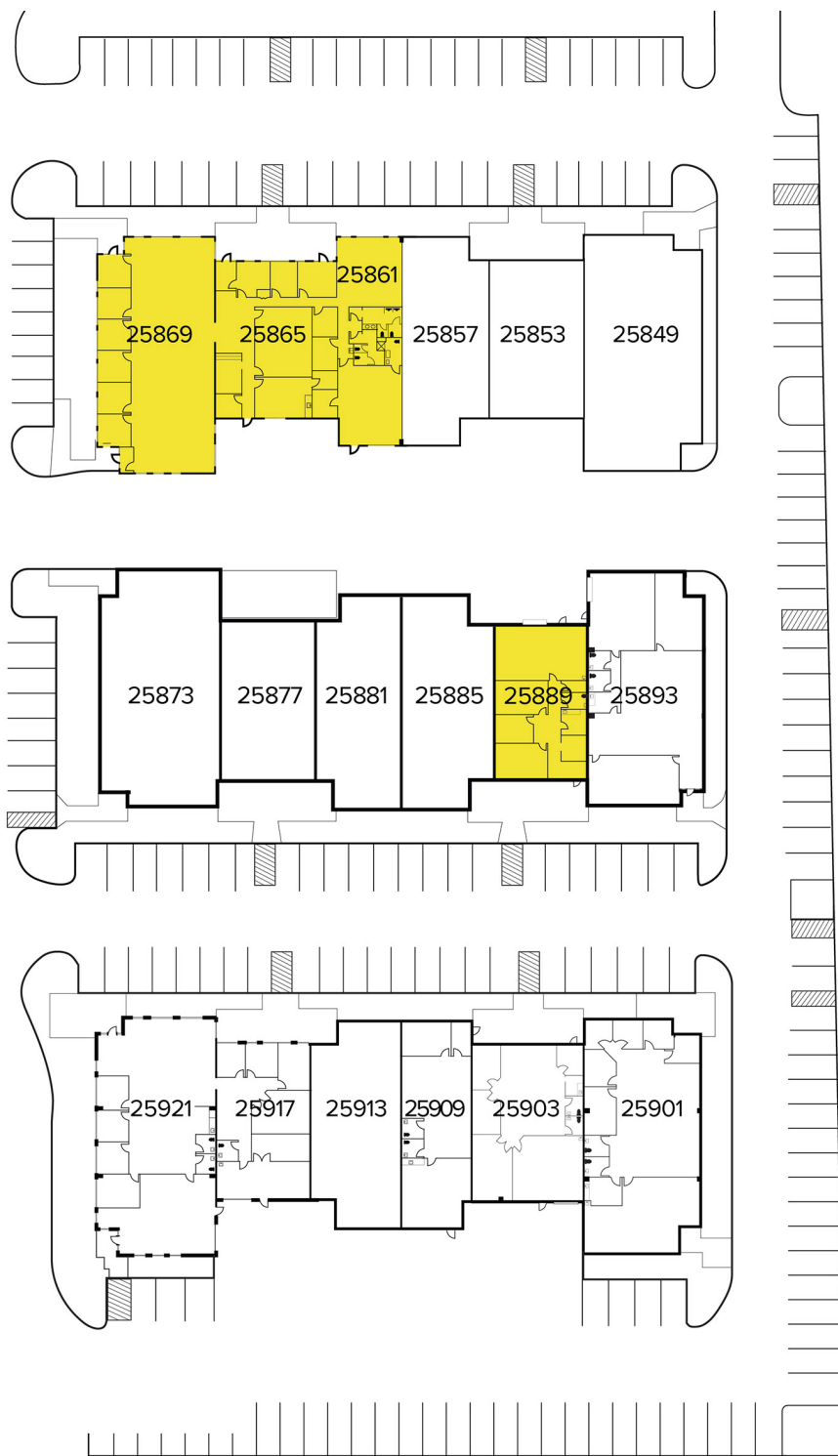
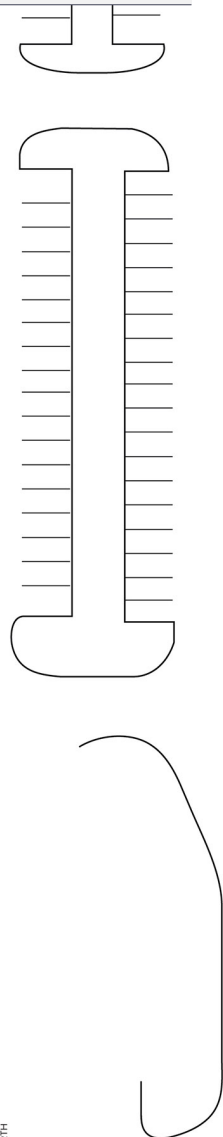
Hi-Tech For Lease

2,250 - 8,864
Square Feet
AVAILABLE

Zoomed In Site Plan

AVAILABILITY

UNIT	TOTAL SF	OFFICE SF	RATE
25861-69	8,864	7,964	\$16.60 G + U
25889	2,250	1,462	\$16.60 G + U



For more information, please contact:

JASON KELMIGIAN

(248) 359 0629

jkelmigian@signatureassociates.com

DAN MORROW

(248) 799 3144

dmorrow@signatureassociates.com

SIGNATURE ASSOCIATES

One Towne Square, Suite 1200

Southfield, MI 48076

www.signatureassociates.com

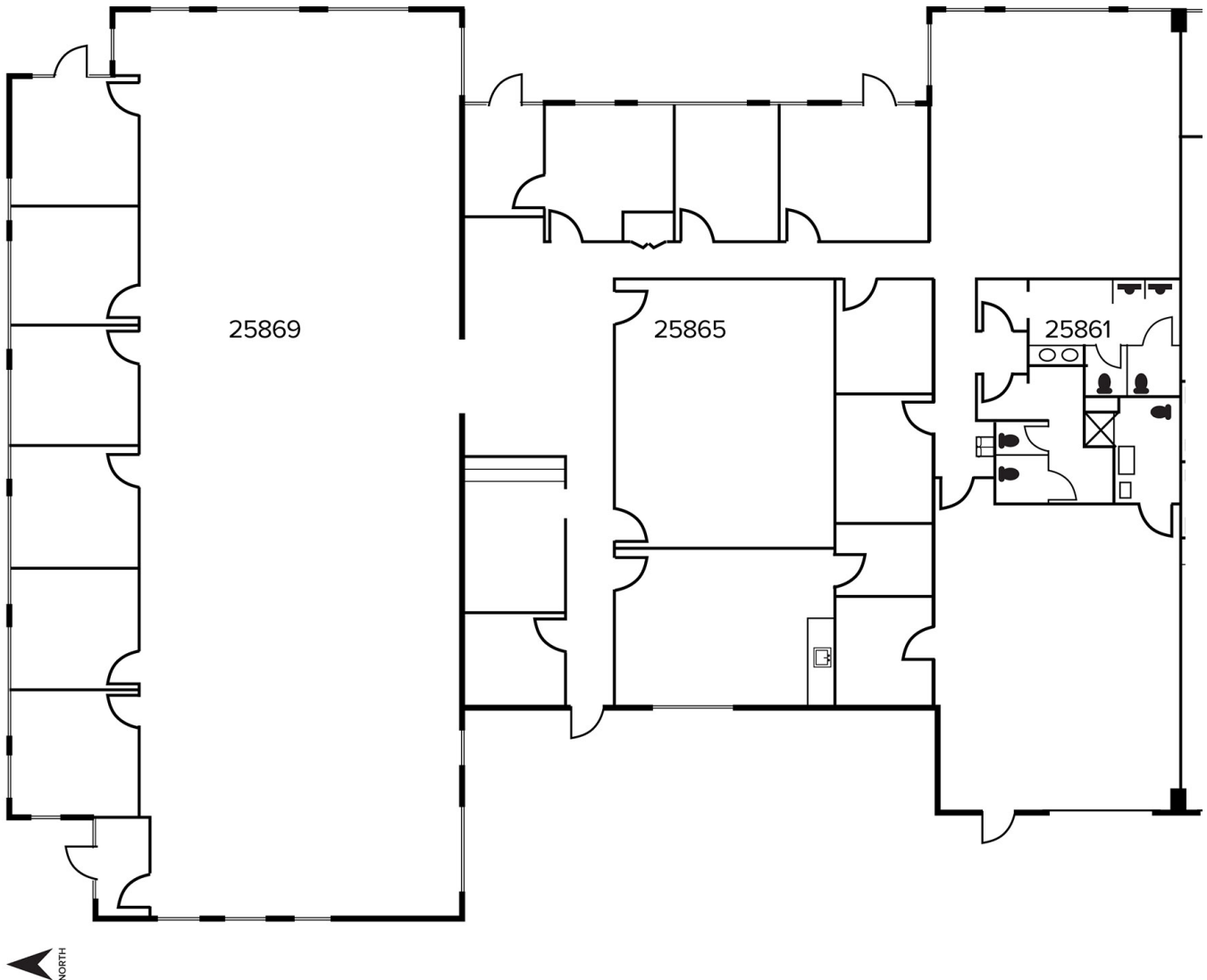
25849-25921 Meadowbrook Road – Novi, Michigan

Hi-Tech For Lease

2,250 - 8,864
Square Feet
AVAILABLE

Floor Plan

AVAILABILITY			
UNIT	TOTAL SF	OFFICE SF	RATE
25861-69	8,864	7,964	\$16.60 G + U



For more information, please contact:

JASON KELMIGIAN

(248) 359 0629

jkelmigian@signatureassociates.com

DAN MORROW

(248) 799 3144

dmorrow@signatureassociates.com

SIGNATURE ASSOCIATES

One Towne Square, Suite 1200

Southfield, MI 48076

www.signatureassociates.com

25849-25921 Meadowbrook Road – Novi, Michigan

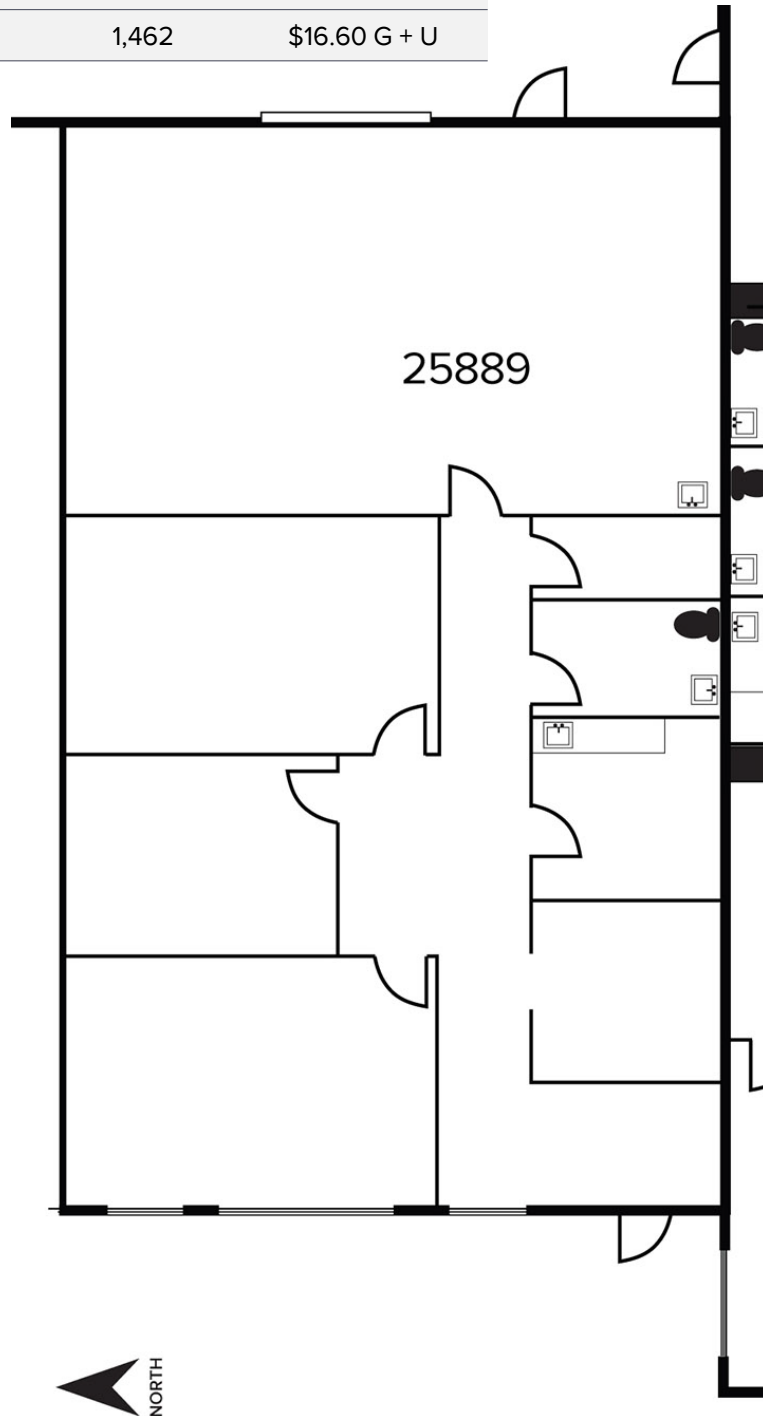
Hi-Tech For Lease

2,250 - 8,864
Square Feet
AVAILABLE

Floor Plan

AVAILABILITY

UNIT	TOTAL SF	OFFICE SF	RATE
25889	2,250	1,462	\$16.60 G + U



For more information, please contact:

JASON KELMIGIAN

(248) 359 0629

jkelmigian@signatureassociates.com

DAN MORROW

(248) 799 3144

dmorrow@signatureassociates.com

SIGNATURE ASSOCIATES

One Towne Square, Suite 1200

Southfield, MI 48076

www.signatureassociates.com