

Livonia Research Center

37545 - 37557 Schoolcraft Road, Livonia, MI 48150



SIGNATURE ASSOCIATES
KNOW SIGNATURE | KNOW RESULTS

Listing ID: 29729483
 Status: Active
 Property Type: Industrial For Lease
 Industrial Type: Flex Space, Industrial-Business Park
 Contiguous Space: 2,500 SF
 Total Available: 2,500 SF
 Lease Rate: \$9.20 PSF (Annual)
 Base Monthly Rent: \$1,916
 Lease Type: Modified Gross
 Loading: 1 Door
 Ceiling: 8 - 13 ft.
 Office SF: 2,000 SF



Overview/Comments

Complex professionally managed by Signature Associates. Perfect for call center or satellite location. Very close to freeways. Air-conditioned warehouses with several different floor plans available. Adjacent units can be combined.

More Information Online

<https://signatureassociates.catalist.com//listing/29729483>



QR Code

Scan this image with your mobile device:

General Information

Tax ID/APN:	46-117-01-0025-004	Building Name:	Livonia Research Center
Industrial Type:	Flex Space, Industrial-Business Park, Light Industrial, Other	Gross Building Area:	2,500 SF
Zoning:	LT. INDUSTRIAL	Building/Unit Size (RSF):	7,500 SF
		Land Area:	4 Acres

Available Space

Suite/Unit Number:	37551	Lease Type:	Modified Gross
Space Available:	2,500 SF	Real Estate Taxes:	\$0.97 PSF (Annual)
Minimum Divisible:	2,500 SF	Office SF:	2,000 SF
Maximum Contiguous:	2,500 SF	Parking Spaces:	0
Space Type:	Relet	Loading Docks:	0
Date Available:	01/31/2017	Loading Doors:	1
Lease Term (Months):	36 Months	Ceiling Height:	13
Lease Rate:	\$9.20 PSF (Annual)	Clear Height:	8

Area & Location

Property Located Between: Newburgh/I-96

Building Related

Tenancy:	Multiple Tenants	Total Parking Spaces:	24
Total Number of Buildings:	1	Sprinklers:	None
Number of Stories:	1	Amps:	110
Office Space SF:	2,000 SF	Volts:	220
Year Built:	1985	X-Phase:	3
Roof Type:	Other	Heat Source:	Other
Construction/Siding:	Other	Air Conditioning:	Other
Parking Type:	Surface	Lighting:	Fluorescent
Parking Description:	Ample Parking		

Location

Address: 37545 - 37557 Schoolcraft Road, Livonia, MI 48150
County: Wayne

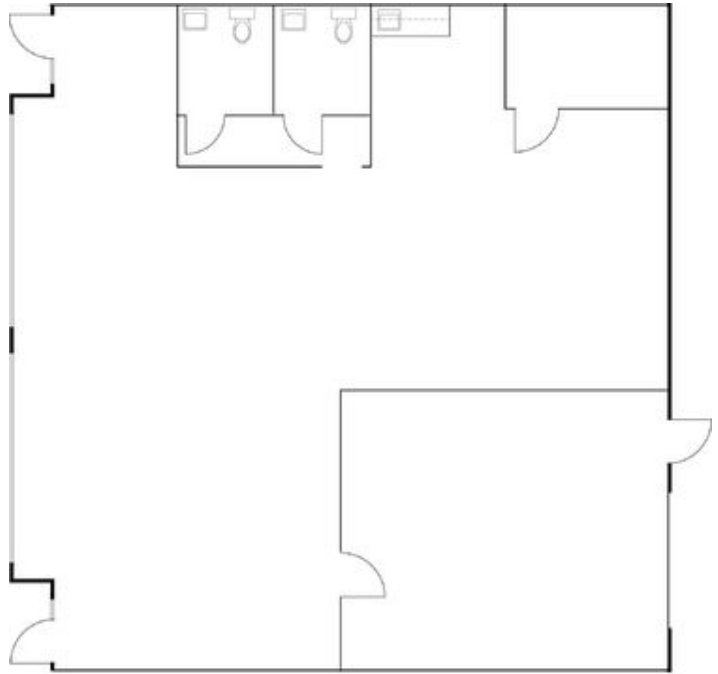
MSA: Detroit-Warren-Dearborn
Submarket: Southern I-275 Corridor



Property Images



Map Livonia_37545_37557_Schoolcraft



Livonia Research Center
37551 Schoolcraft Rd - 2,500 sf
Floor Plan Livonia_37519-37561 Schoolcraft_Unit 37551

Property Contacts



Jason M. Kelmigian

Signature Associates

248-359-0629 [0]

jkelmigian@signatureassociates.com