

1235 HOLDEN AVENUE
MILFORD, MICHIGAN

HI-TECH FOR SALE OR LEASE
73,793 Square Feet Available



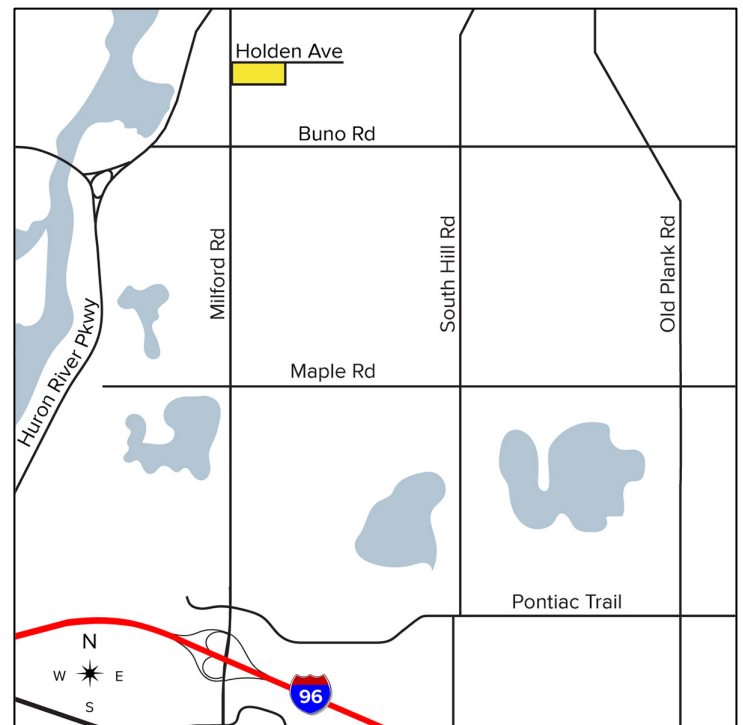
**SIGNATURE
ASSOCIATES**
KNOW SIGNATURE | KNOW RESULTS

CLEAN MANUFACTURING FACILITY



PROPERTY FEATURES

- 73,793 square feet available
- 6,000 square feet of office
- 17'-34' clear height
- (3) 12x14, (1) 14x20 grade level doors
- (3) truckwells
- (1) 3-ton crane
- Full HVAC, heavy power and backup generator
- 5,000 square feet of mezzanine space
- Zoned Light Industrial
- Located on 11.6 acres
- Lease Rate: \$5.75/sq. ft. NNN
- Sale Price: \$4,430,000 (\$60.03/sq.ft.)



For more information, please contact:

JIM MONTOMERY
(248) 359 0614
jmontgomery@signatureassociates.com

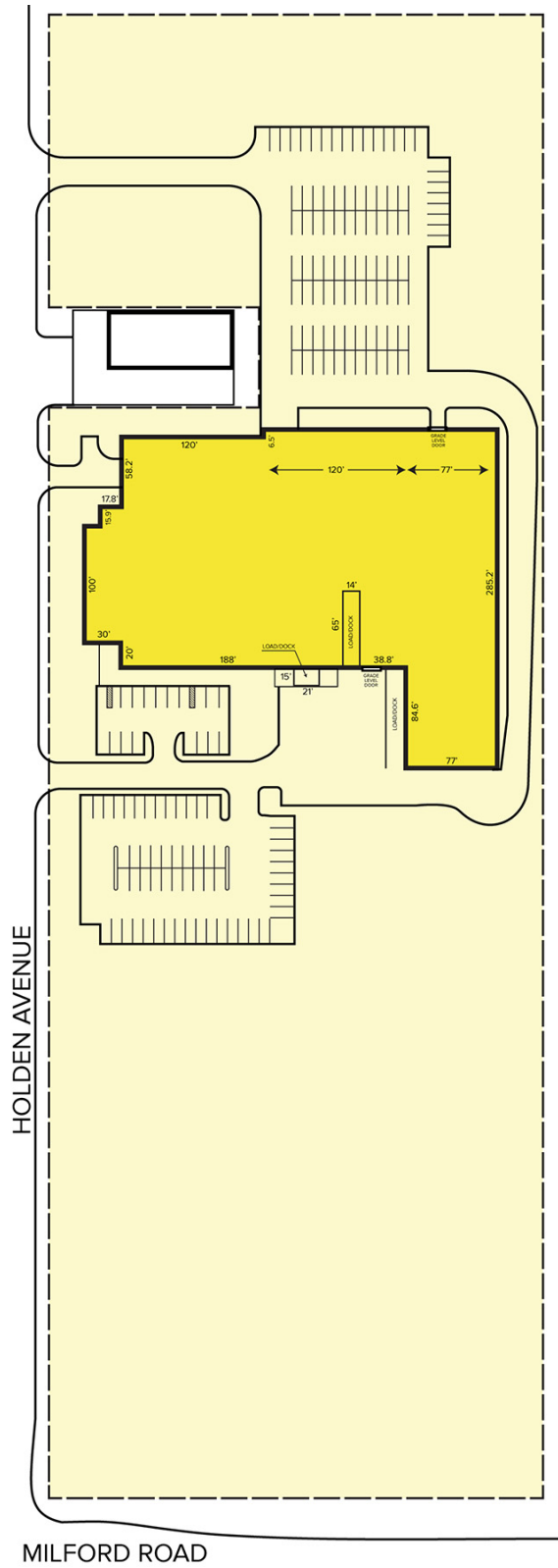
SIGNATURE ASSOCIATES
One Towne Square, Suite 1200
Southfield, MI 48076
www.signatureassociates.com

1235 Holden Avenue – Milford, Michigan

Hi-Tech For Sale or Lease

73,790
Square Feet
AVAILABLE

Site Plan

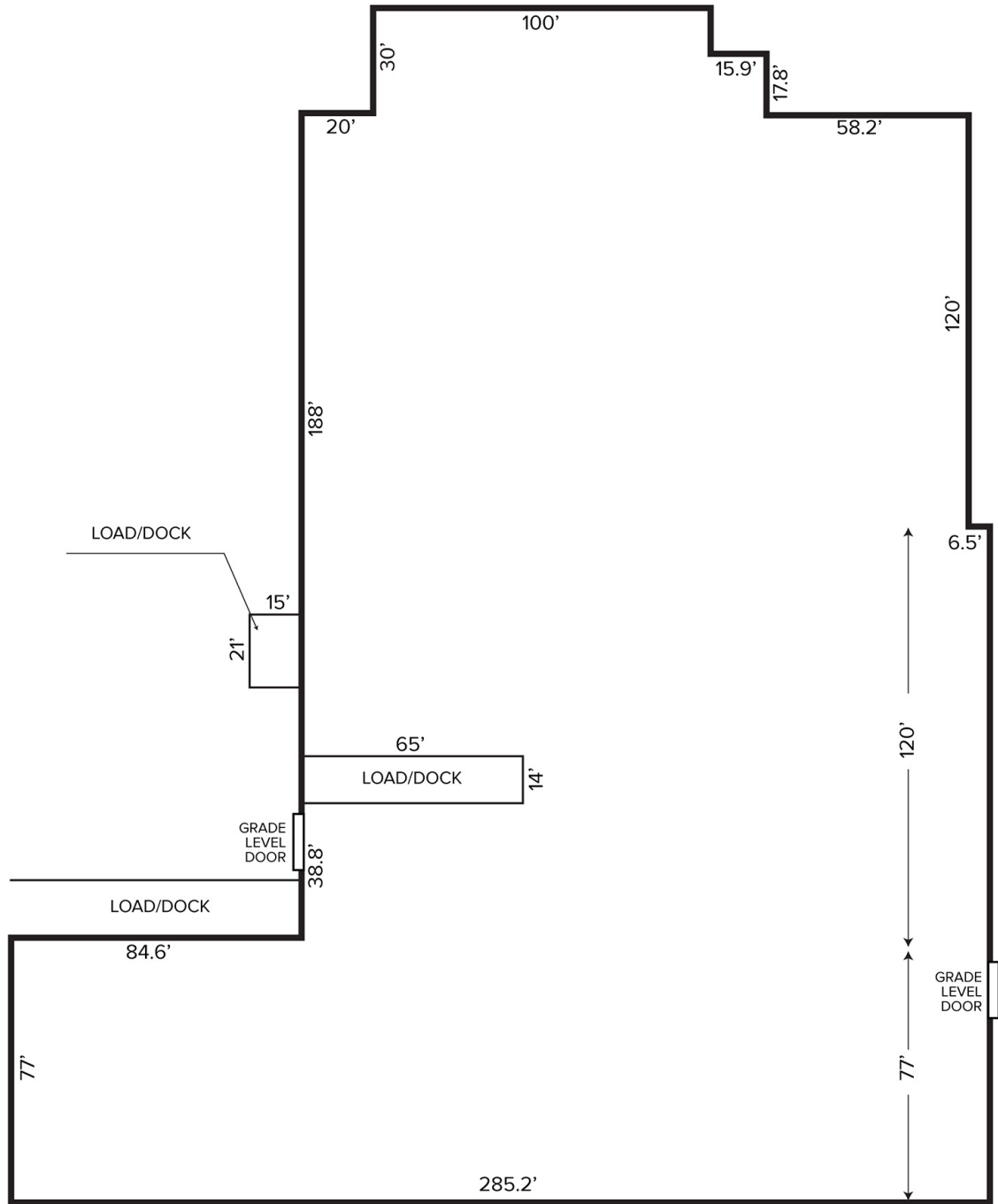


For more information, please contact:

JIM MONTOMERY
(248) 359 0614
jmontgomery@signatureassociates.com

SIGNATURE ASSOCIATES
One Towne Square, Suite 1200
Southfield, MI 48076
www.signatureassociates.com

Floor Plan



For more information, please contact:

JIM MONTOMERY
(248) 359 0614
jmontgomery@signatureassociates.com

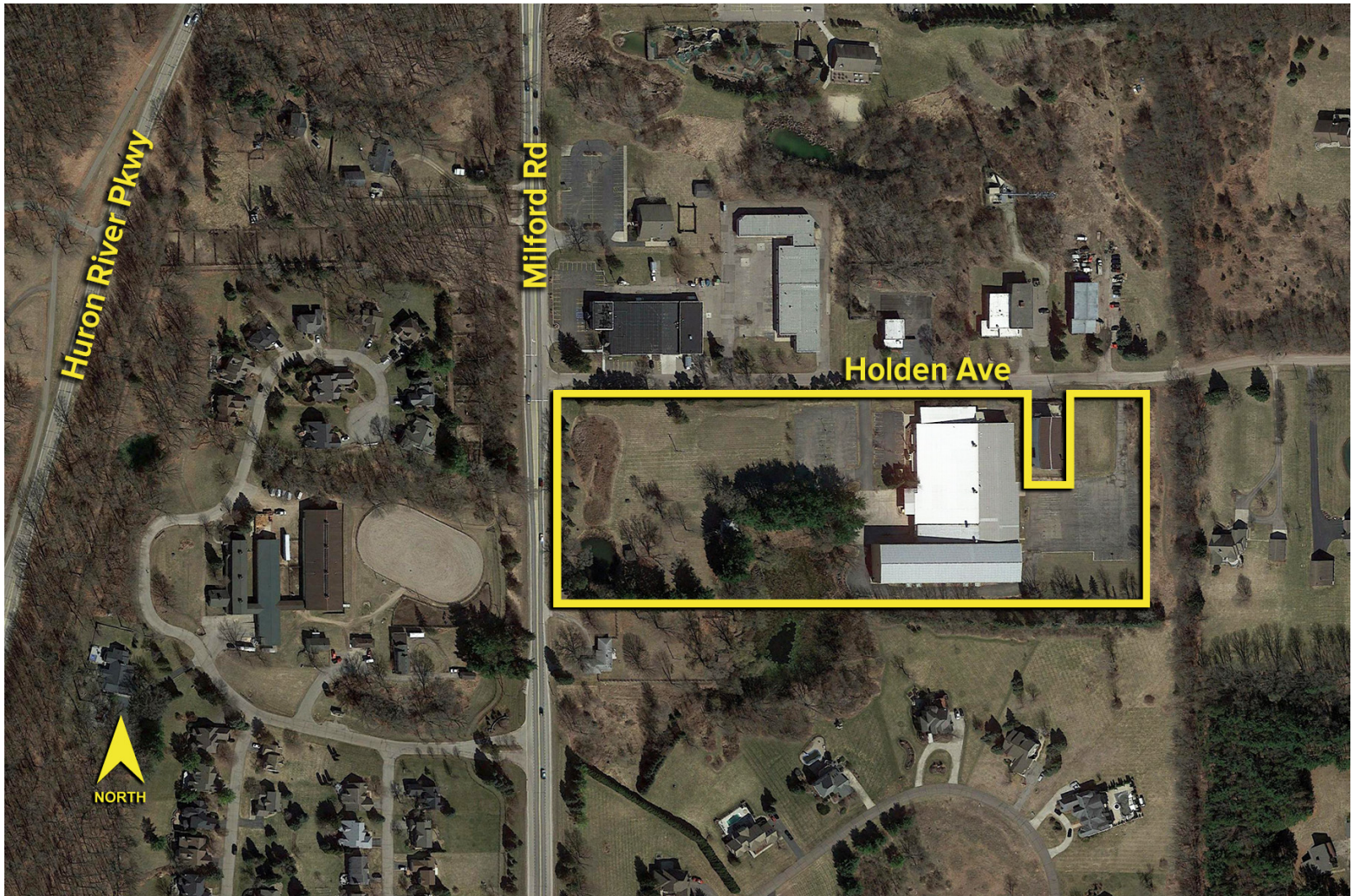
SIGNATURE ASSOCIATES
One Towne Square, Suite 1200
Southfield, MI 48076
www.signatureassociates.com

1235 Holden Avenue – Milford, Michigan

Hi-Tech For Sale or Lease

73,790
Square Feet
AVAILABLE

Aerial



For more information, please contact:

JIM MONTOMERY
(248) 359 0614
jmontgomery@signatureassociates.com

SIGNATURE ASSOCIATES
One Towne Square, Suite 1200
Southfield, MI 48076
www.signatureassociates.com