

30910 WIXOM ROAD  
WIXOM, MICHIGAN

LAND FOR SALE  
4.83 Acres Available



**SIGNATURE  
ASSOCIATES**  
KNOW SIGNATURE | KNOW RESULTS



## PROPERTY FEATURES

- 4.83 acres available
- Zoned Multi-Use
- All utilities available at site
- Wixom road frontage, fully improved, with many uses possible
- Easy I-96 expressway access
- Close to all services
- Sale price: \$850,000 (\$175,983.44/acre)



For more information, please contact:

**JIM MONTGOMERY**  
(248) 359 0614  
jmontgomery@signatureassociates.com

**JOHN BOYD**  
(248) 948 0102  
jboyd@signatureassociates.com

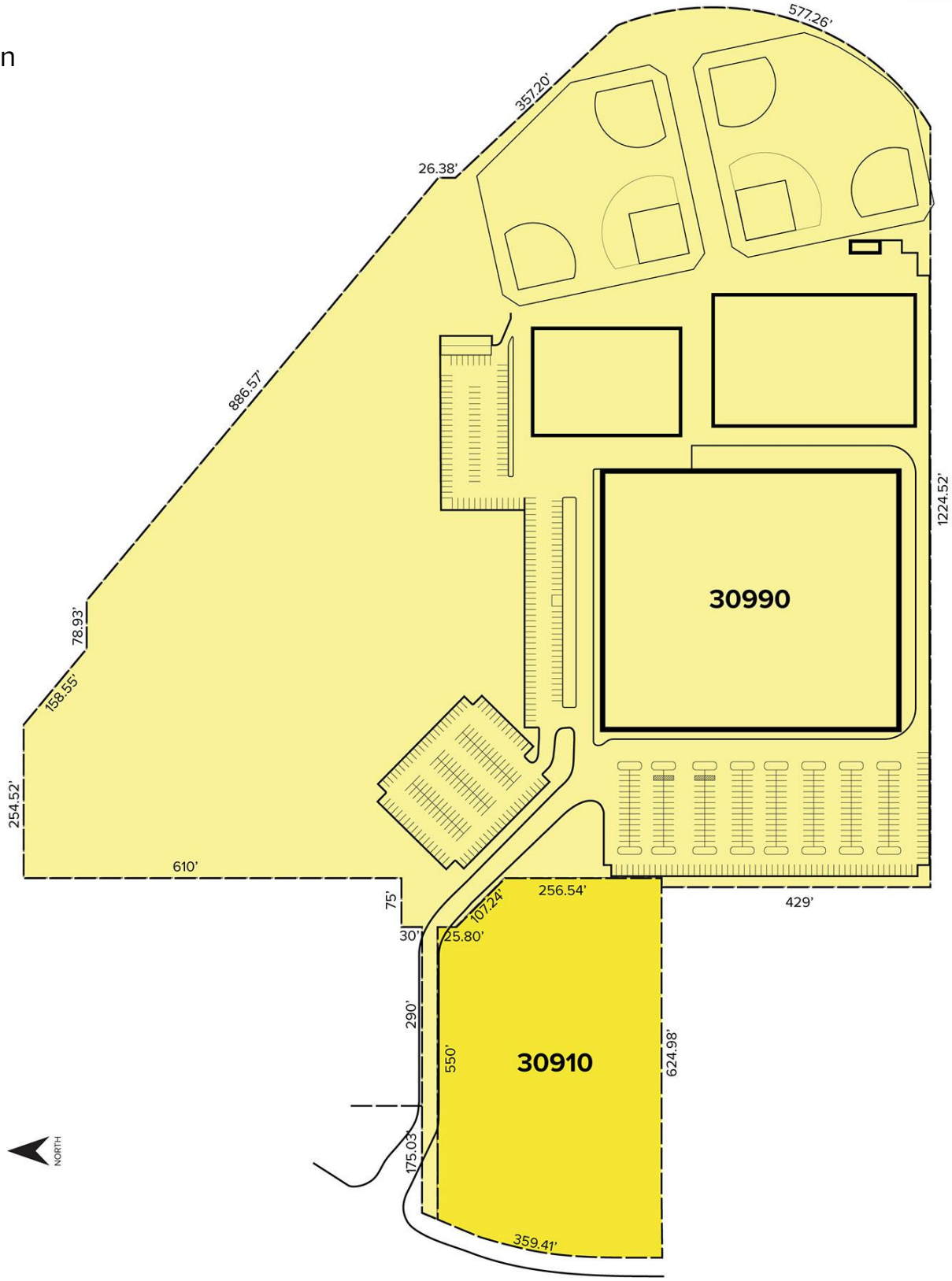
**SIGNATURE ASSOCIATES**  
One Towne Square, Suite 1200  
Southfield, MI 48076  
www.signatureassociates.com

# 30910 Wixom Road – Wixom, Michigan

## Land For Sale

4.83  
Acres  
AVAILABLE

### Site Plan



For more information, please contact:

**JIM MONTGOMERY**

(248) 359 0614

[jmontgomery@signatureassociates.com](mailto:jmontgomery@signatureassociates.com)

**JOHN BOYD**

(248) 948 0102

[jboyd@signatureassociates.com](mailto:jboyd@signatureassociates.com)

**SIGNATURE ASSOCIATES**

One Towne Square, Suite 1200

Southfield, MI 48076

[www.signatureassociates.com](http://www.signatureassociates.com)