

5775 BRIGHTON PINES CT
HOWELL, MICHIGAN

INDUSTRIAL FOR SALE OR LEASE
55,353 Square Feet Available



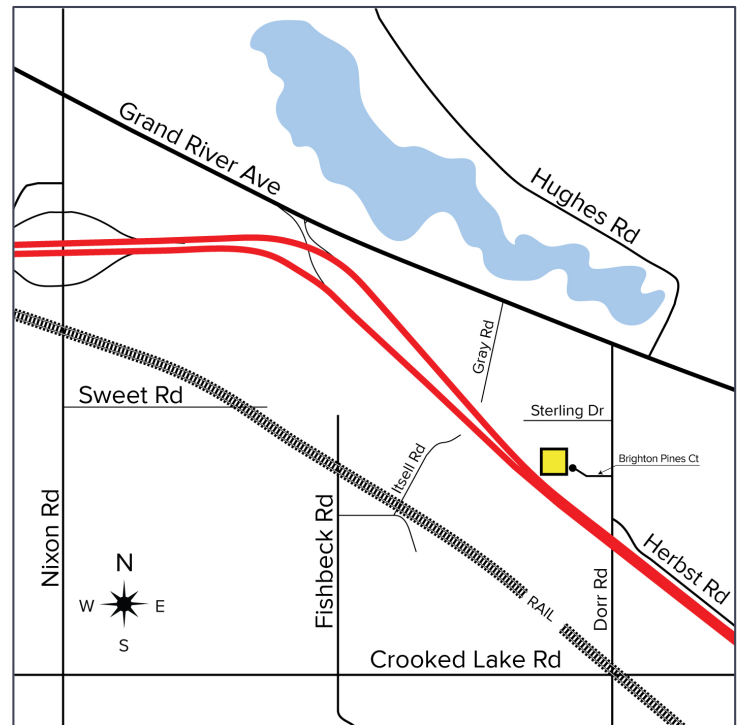
**SIGNATURE
ASSOCIATES**
KNOW SIGNATURE | KNOW RESULTS

BRIGHTON PINES INDUSTRIAL PARK



PROPERTY FEATURES

- 55,353 square feet available
- 6,000 square feet of office
- 26' clear height
- Beautiful corporate image manufacturing / distribution building with I-96 frontage
- (2) 12x14 grade level doors, (2) truckwells
- (1) 10-Ton crane, 2nd bay prepped for 10-Ton crane
- Primary power 11,000 amps / 480 volts
- Expandable for an additional 25,000 sq.ft.
- 9,000 sq.ft. of load supporting mezzanine
- Lease Rate: \$6.50/sq.ft. NNN
- Sale Price: \$4,096,122 (\$74.00/sq.ft.)



For more information, please contact:

JIM MONTGOMERY
(248) 359 0614
jmontgomery@signatureassociates.com

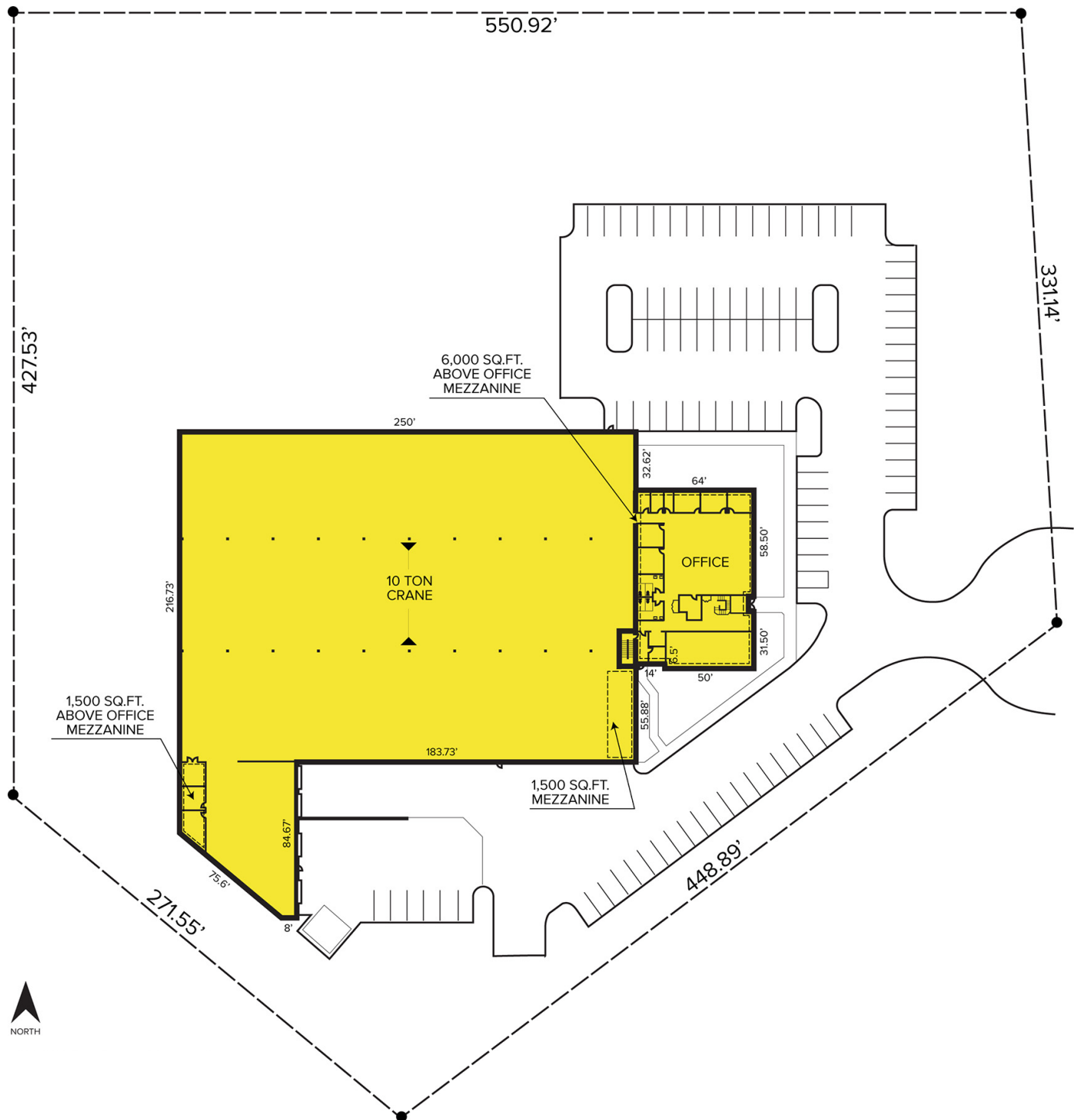
SIGNATURE ASSOCIATES
One Towne Square, Suite 1200
Southfield, MI 48076
www.signatureassociates.com

5775 Brighton Pines Court – Howell, Michigan

Industrial For Sale or Lease

55,353
Square Feet
AVAILABLE

Site Plan



For more information, please contact:

JIM MONTGOMERY
(248) 359 0614
jmontgomery@signatureassociates.com

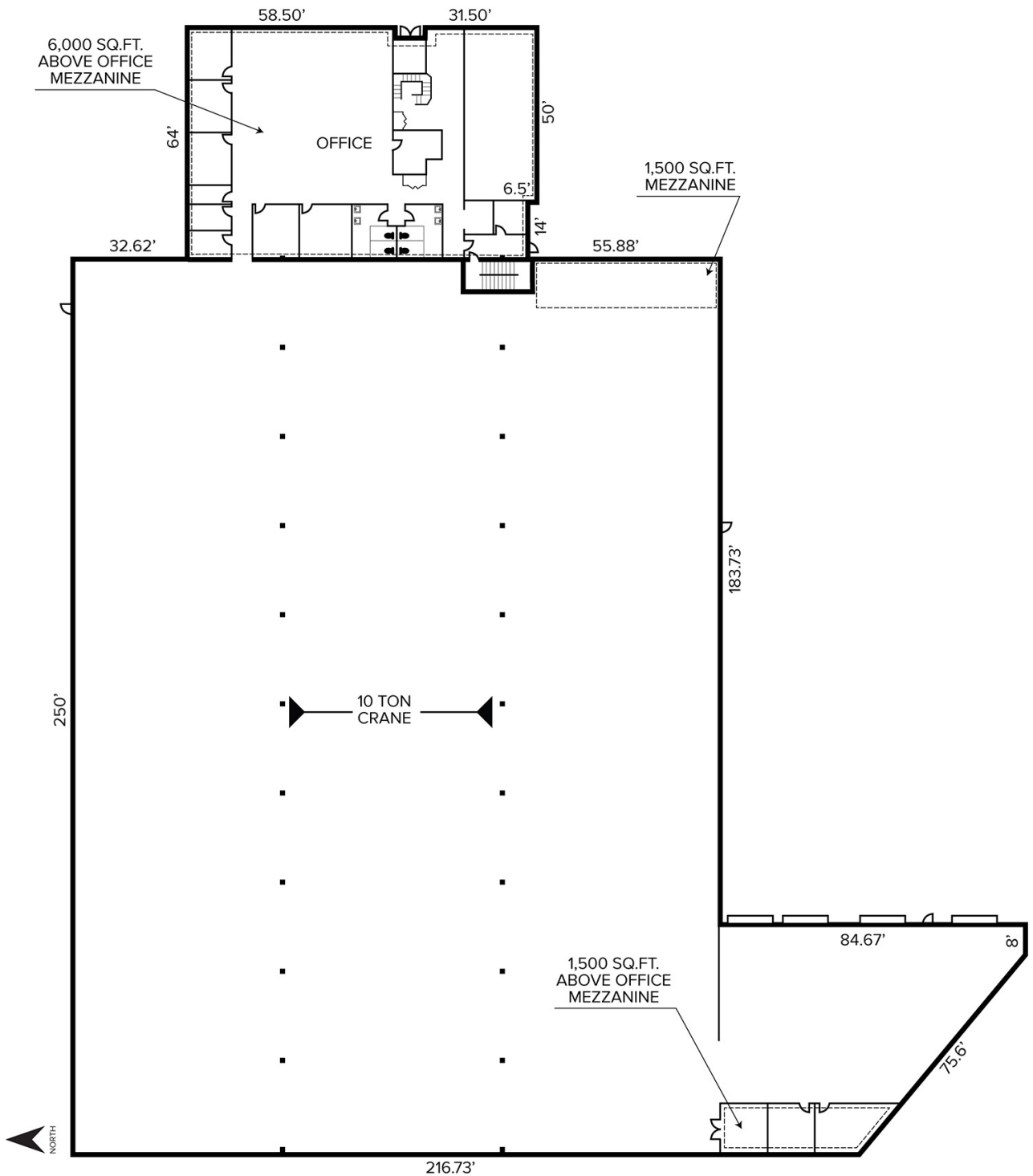
SIGNATURE ASSOCIATES
One Towne Square, Suite 1200
Southfield, MI 48076
www.signatureassociates.com

5775 Brighton Pines Court – Howell, Michigan

Industrial For Sale or Lease

55,353
Square Feet
AVAILABLE

Floor Plan



For more information, please contact:

JIM MONTGOMERY
(248) 359 0614
jmontgomery@signatureassociates.com

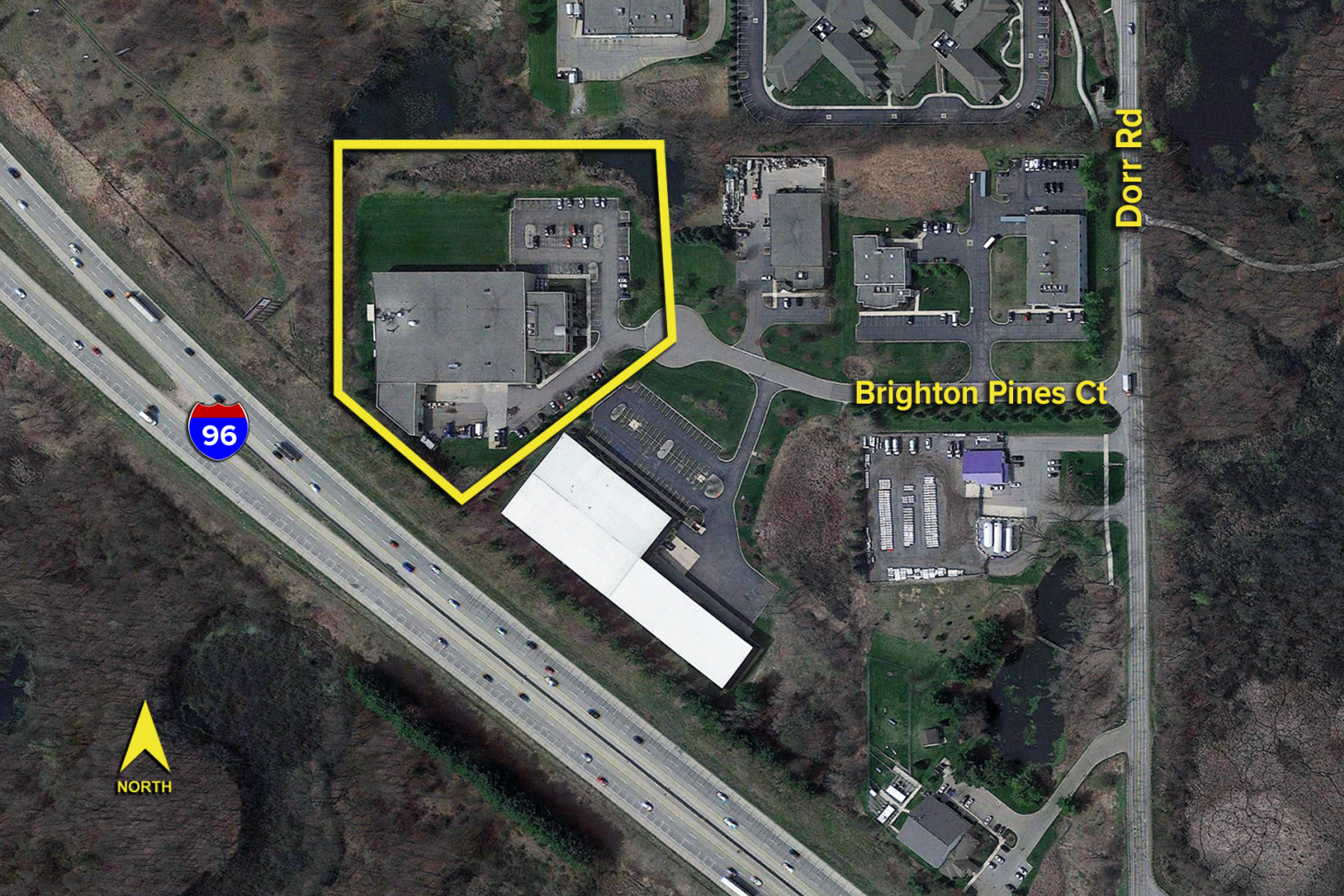
SIGNATURE ASSOCIATES
One Towne Square, Suite 1200
Southfield, MI 48076
www.signatureassociates.com

5775 Brighton Pines Court – Howell, Michigan

Industrial For Sale or Lease

55,353
Square Feet
AVAILABLE

Aerial



For more information, please contact:

JIM MONTGOMERY
(248) 359 0614
jmontgomery@signatureassociates.com

SIGNATURE ASSOCIATES
One Towne Square, Suite 1200
Southfield, MI 48076
www.signatureassociates.com

Information is subject to verification and no liability for errors or omissions is assumed. Price is subject to change and listing withdrawal.