

5454 EAGLE CENTER DRIVE
BRIGHTON, MICHIGAN

HI-TECH/OFFICE FOR SALE
10,957 Square Feet Available



**SIGNATURE
ASSOCIATES**
KNOW SIGNATURE | KNOW RESULTS

EAGLE BUSINESS CENTER



PROPERTY FEATURES

- 10,957 square feet available
- 14' clear height
- (2) 12x14 grade level doors
- Zoned B-3
- 240 volts power
- Perfect for owner/investor
- (2) credit tenants currently occupy 3,500 sq. ft.
- Approximately 4,000 sq. ft. shop
- Beautifully maintained in high-end business park
- Sale Price: \$1,200,000 (\$109.52/sq.ft.)



For more information, please contact:

JIM MONTGOMERY
(248) 359 0614
jmontgomery@signatureassociates.com

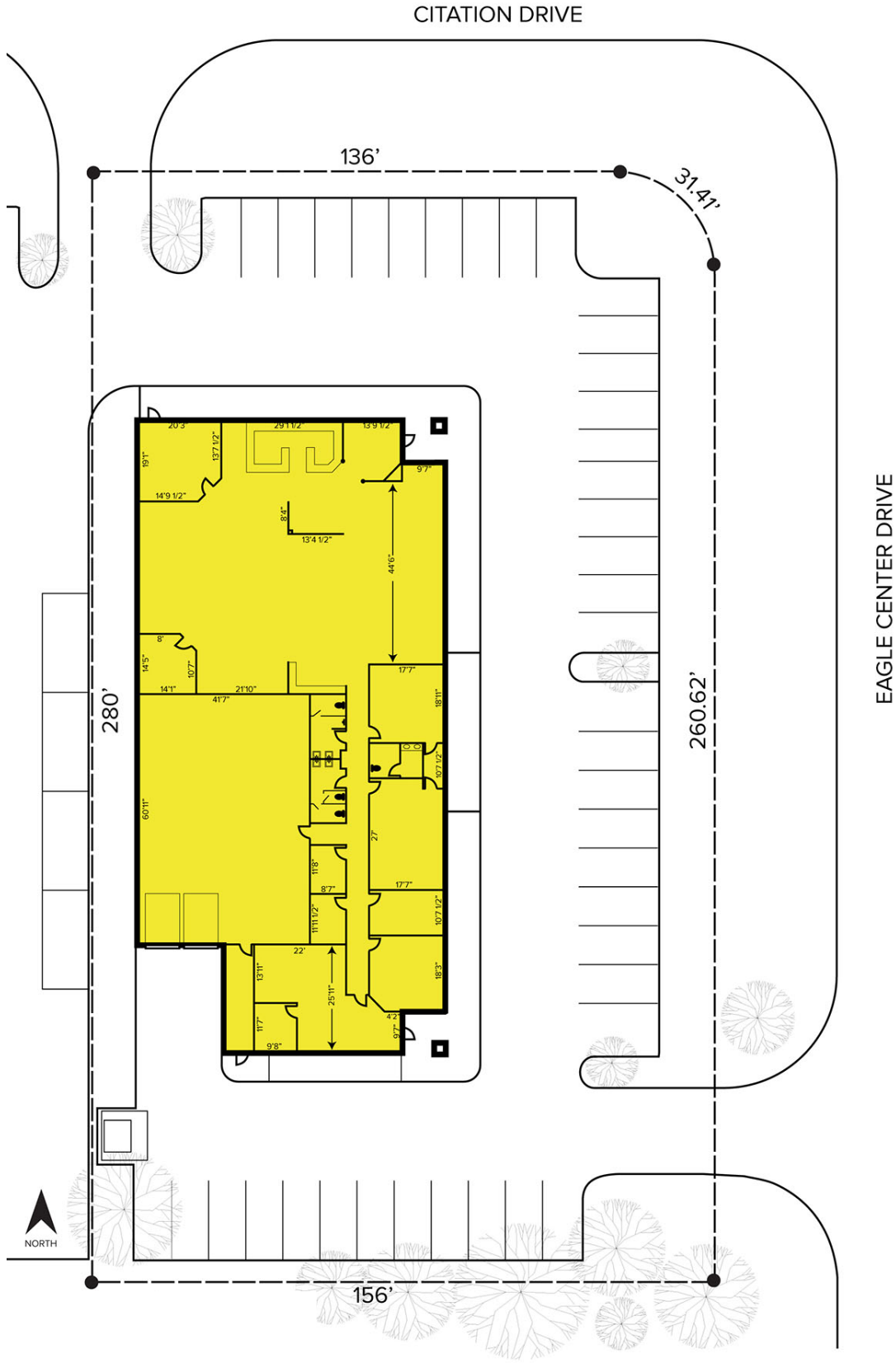
SIGNATURE ASSOCIATES
One Towne Square, Suite 1200
Southfield, MI 48076
www.signatureassociates.com

5454 Eagle Center Drive – Brighton, Michigan

Hi-Tech/Office For Sale

10,957
Square Feet
AVAILABLE

Site Plan



For more information, please contact:

JIM MONTGOMERY
(248) 359 0614
jmontgomery@signatureassociates.com

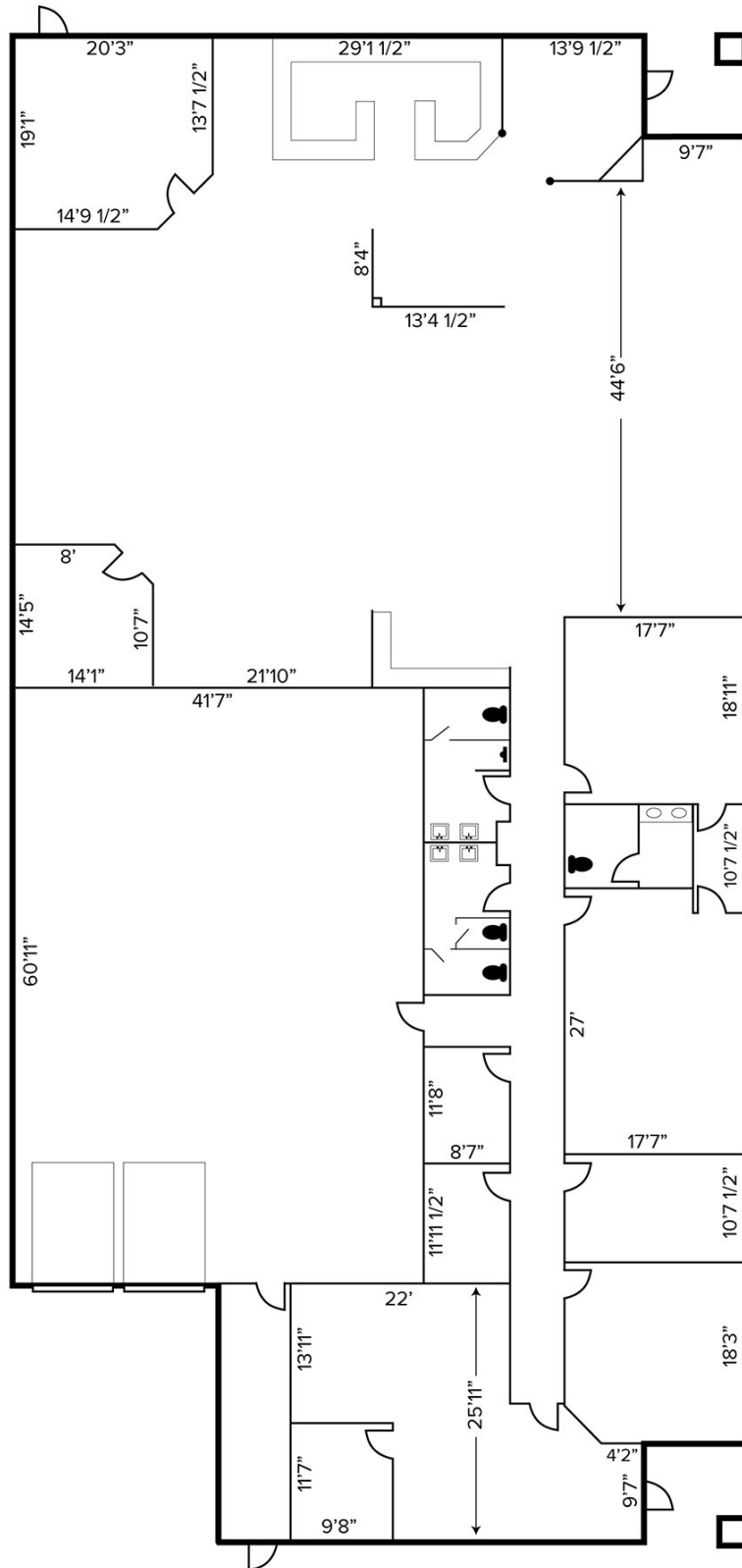
SIGNATURE ASSOCIATES
One Towne Square, Suite 1200
Southfield, MI 48076
www.signatureassociates.com

5454 Eagle Center Drive – Brighton, Michigan

Hi-Tech/Office For Sale

10,957
Square Feet
AVAILABLE

Floor Plan



For more information, please contact:

JIM MONTGOMERY
(248) 359 0614
jmontgomery@signatureassociates.com

SIGNATURE ASSOCIATES
One Towne Square, Suite 1200
Southfield, MI 48076
www.signatureassociates.com

5454 Eagle Center Drive – Brighton, Michigan

Hi-Tech/Office For Sale

10,957
Square Feet
AVAILABLE

Aerial



For more information, please contact:

JIM MONTGOMERY
(248) 359 0614
jmontgomery@signatureassociates.com

SIGNATURE ASSOCIATES
One Towne Square, Suite 1200
Southfield, MI 48076
www.signatureassociates.com