

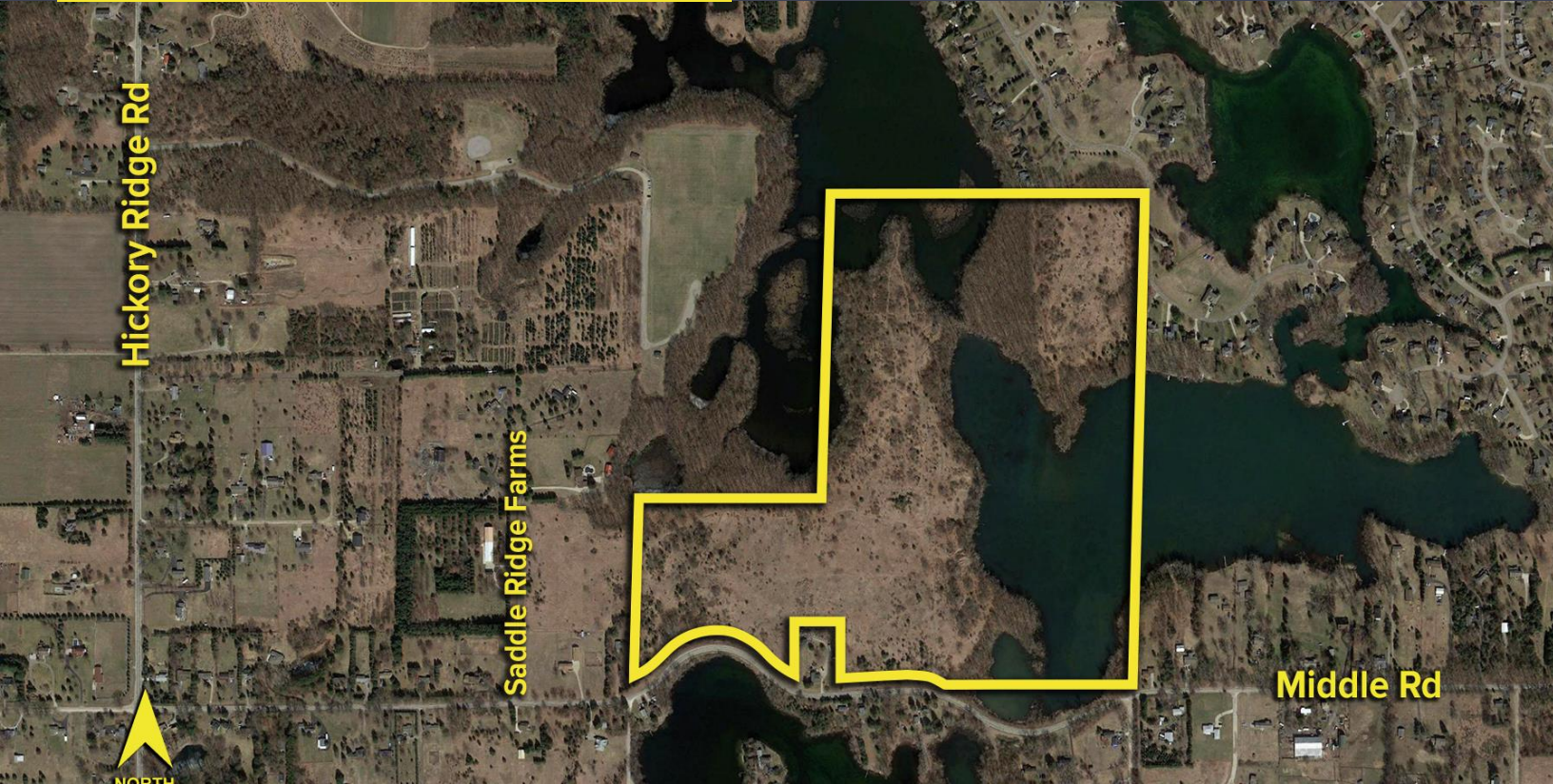
MIDDLE ROAD
HIGHLAND TWP., MICHIGAN

VACANT LAND FOR SALE
122.50 Acres Available



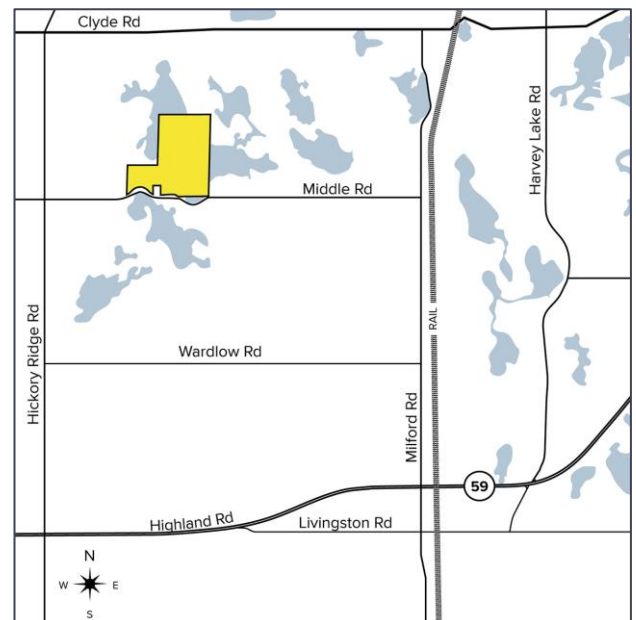
**SIGNATURE
ASSOCIATES**
KNOW SIGNATURE | KNOW RESULTS

DEVELOPMENT LAND



PROPERTY FEATURES

- 122.50 acres available
- Zoned residential
- Outstanding lakefront residential development opportunity just north of M-59
- Super topography in a growing residential market
- Sale Price: \$800,000 (\$6,530.61/acre)



For more information, please contact:

JIM MONTGOMERY
(248) 359 0614
jmontgomery@signatureassociates.com

STEVE GORDON
(248) 948 0101
sgordon@signatureassociates.com

SIGNATURE ASSOCIATES
One Towne Square, Suite 1200
Southfield, MI 48076
www.signatureassociates.com