

27068 OAKMEAD DRIVE
PERRYSBURG TOWNSHIP, OH 43551

OFFICE CONDOMINIUM FOR LEASE
2,000 Square Feet Available



**SIGNATURE
ASSOCIATES**
KNOW SIGNATURE | KNOW RESULTS

FULL-SERVICE COMMERCIAL REAL ESTATE



GENERAL INFORMATION

Lease Rate:	\$2,200/mo. plus gas and electric
Building Size:	2,000 square feet
Number of Stories:	1
Year Constructed:	1986
Condition:	Good
Acreage:	1.76 (4 condos on lot)
Closest Cross Street:	Fremont Pike (SR 20)
County:	Wood
Zoning:	C-2 Community Business District State Route 20/23 Overlay
Parking:	Approximately 41 spaces
Curb Cuts:	1
Street:	2 lane, 2 way



For more information, please contact:

MEGAN MALCZEWSKI, CCIM
(419) 249 6314 or (419) 215 1008
mmalczewski@signatureassociates.com

SIGNATURE ASSOCIATES
Four SeaGate, Suite 608
Toledo, Ohio 43604
www.signatureassociates.com

27068 Oakmead Drive, Perrysburg Twp., OH 43551

Office Condominium For Lease

2,000
Square Feet
AVAILABLE

BUILDING SPECIFICATIONS

Exterior Walls:	Wood
Structural System:	Wood frame
Roof:	Pitched asphalt shingle
Floors:	Wood
Floor Coverings:	Carpet and tile
Ceiling Height:	Approximately 9'
Basement:	No – built on crawl space
Heating:	Gas forced air
Air Conditioning:	Central
Power:	200 amps
Restrooms:	1
Overhead Doors:	No
Sprinklers:	No
Signage:	Monument and fascia

BUILDING INFORMATION

Current Occupant:	Vacant
Occupancy Date:	Upon lease execution
Sign on Property:	Yes
Key Available:	Lockbox

LEASE DETAILS

Term:	2-3 years
Security Deposit:	Equal to 1 month's rent
Options:	Negotiable
Improvement Allowance:	Negotiable
Tenant Responsible For:	Gas, electric, suite janitorial and interior maintenance.

2020 REAL ESTATE TAXES

Parcel:	P60-400-026104005200
Total Annual Taxes:	\$4,899.09

Suite Layout consists of:

- 2 large offices
- Admin area
- Waiting room
- 5 small offices (1 with sink)
- Kitchen with sink
- Storage room
- Restrooms
- Turnkey suite includes exam tables, waiting room chairs, and additional chairs and cubicles.
- Located in Perrysburg Township where no city income taxes are currently levied.

For more information, please contact:

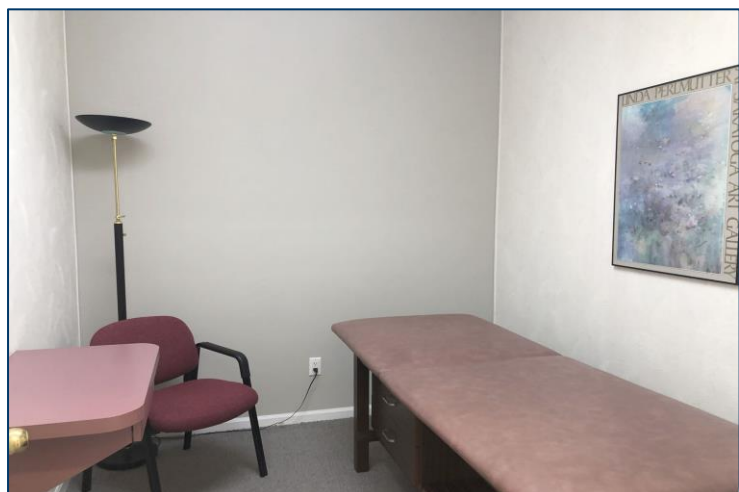
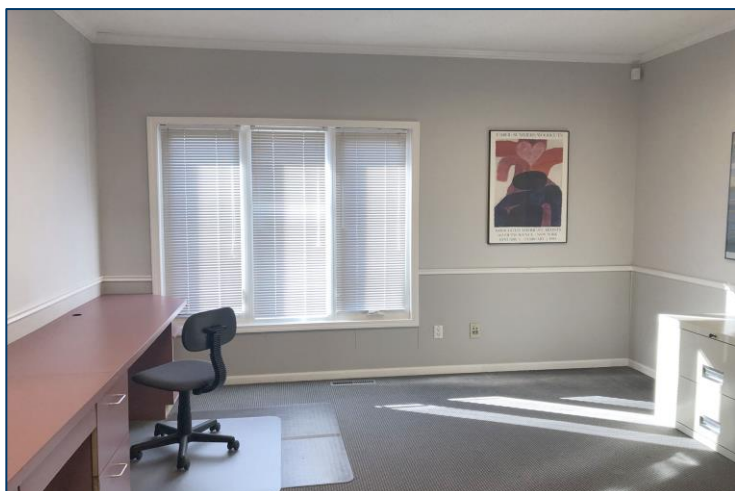
MEGAN MALCZEWSKI, CCIM
(419) 249 6314 or (419) 215 1008
mmalczewski@signatureassociates.com

SIGNATURE ASSOCIATES
Four SeaGate, Suite 608
Toledo, Ohio 43604
www.signatureassociates.com

27068 Oakmead Drive, Perrysburg Twp., OH 43551

Office Condominium For Lease

2,000
Square Feet
AVAILABLE

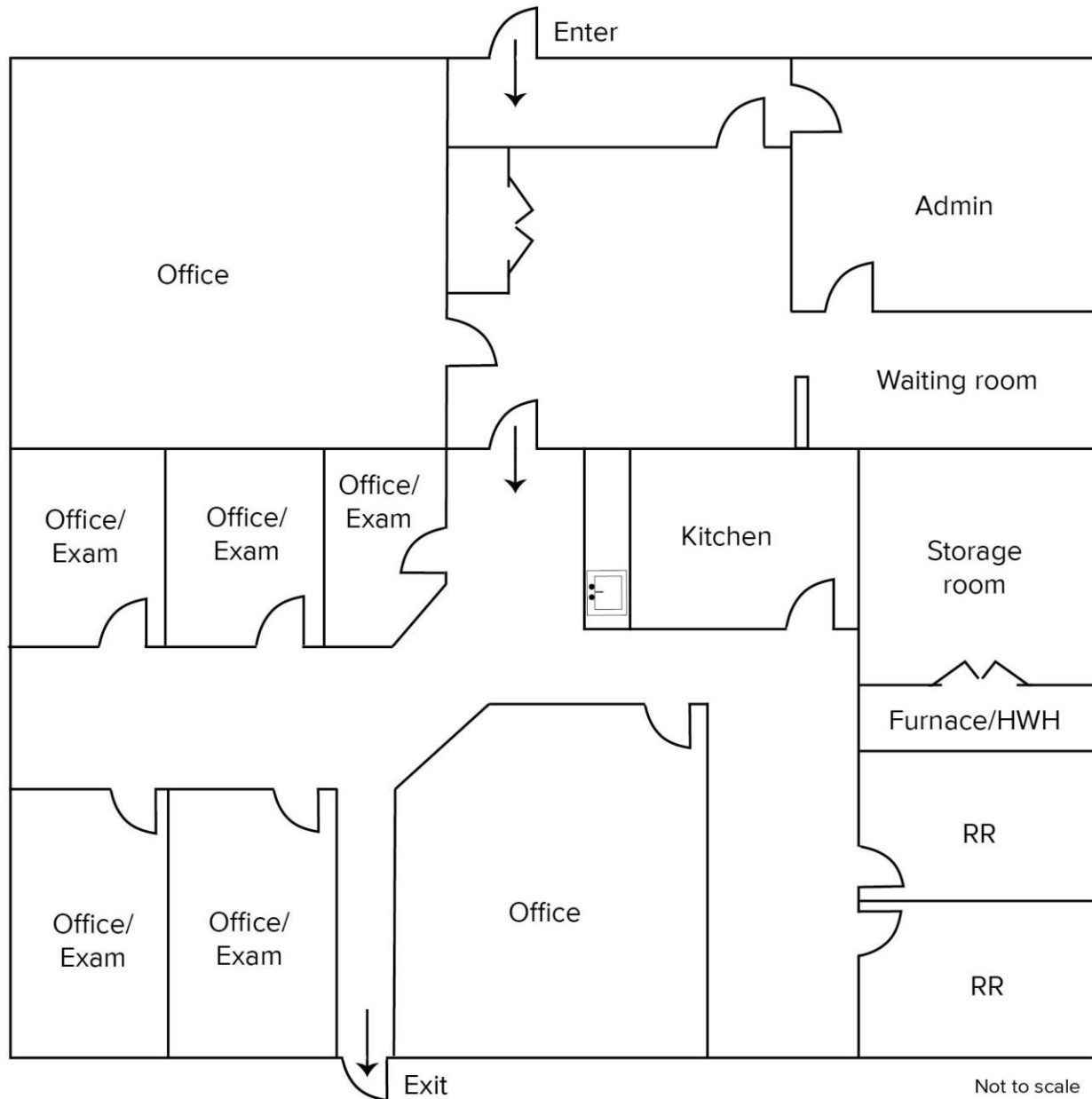


For more information, please contact:
MEGAN MALCZEWSKI, CCIM
(419) 249 6314 or (419) 215 1008
mmalczewski@signatureassociates.com

SIGNATURE ASSOCIATES
Four SeaGate, Suite 608
Toledo, Ohio 43604
www.signatureassociates.com

27068 Oakmead Drive, Perrysburg Twp., OH 43551
Office Condominium For Lease

2,000
Square Feet
AVAILABLE



For more information, please contact:

MEGAN MALCZEWSKI, CCIM
(419) 249 6314 or (419) 215 1008
mmalczewski@signatureassociates.com

SIGNATURE ASSOCIATES
Four SeaGate, Suite 608
Toledo, Ohio 43604
www.signatureassociates.com

27068 Oakmead Drive, Perrysburg Twp., OH 43551
Office Condominium For Lease

2,000
Square Feet
AVAILABLE



For more information, please contact:
MEGAN MALCZEWSKI, CCIM
(419) 249 6314 or (419) 215 1008
mmalczewski@signatureassociates.com

SIGNATURE ASSOCIATES
Four SeaGate, Suite 608
Toledo, Ohio 43604
www.signatureassociates.com

Information is subject to verification and no liability for errors or omissions is assumed. Price is subject to change and listing withdrawal.