

40501 PRODUCTION DRIVE  
HARRISON TWP., MICHIGAN

INDUSTRIAL FOR SALE  
54,140 Square Feet Available



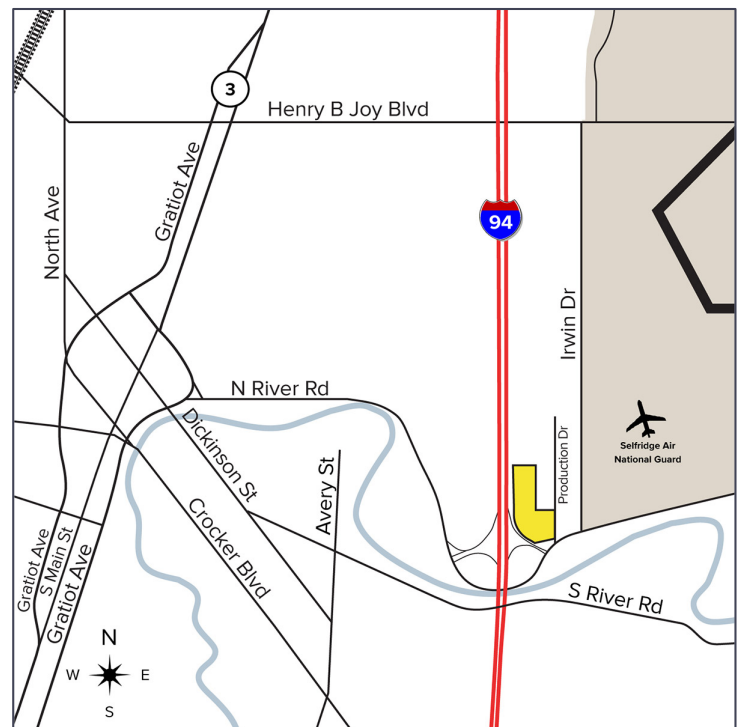
**SIGNATURE  
ASSOCIATES**  
KNOW SIGNATURE | KNOW RESULTS

**REDEVELOPMENT OPPORTUNITY!**



## PROPERTY FEATURES

- 54,140 square feet available
- Situated on 13.5 acres
- Zoned Industrial
- Newly paved parking lot
- Completely remodeled interior & exterior
- Main road and freeway exposure with easy access to I-94
- Currently a sports and entertainment center
- Includes: bowling alley, softball diamonds, racquet/handball/wallyball courts, axe throwing, arcades, darts/billiards, cornhole, pins & skins, and short court basketball
- Full commercial kitchen & bar
- Sale Price: \$6,500,000 (\$120.06/sq.ft.)



For more information, please contact:

**CHRIS MONSOUR**  
(248) 948 0107  
cmonsour@signatureassociates.com

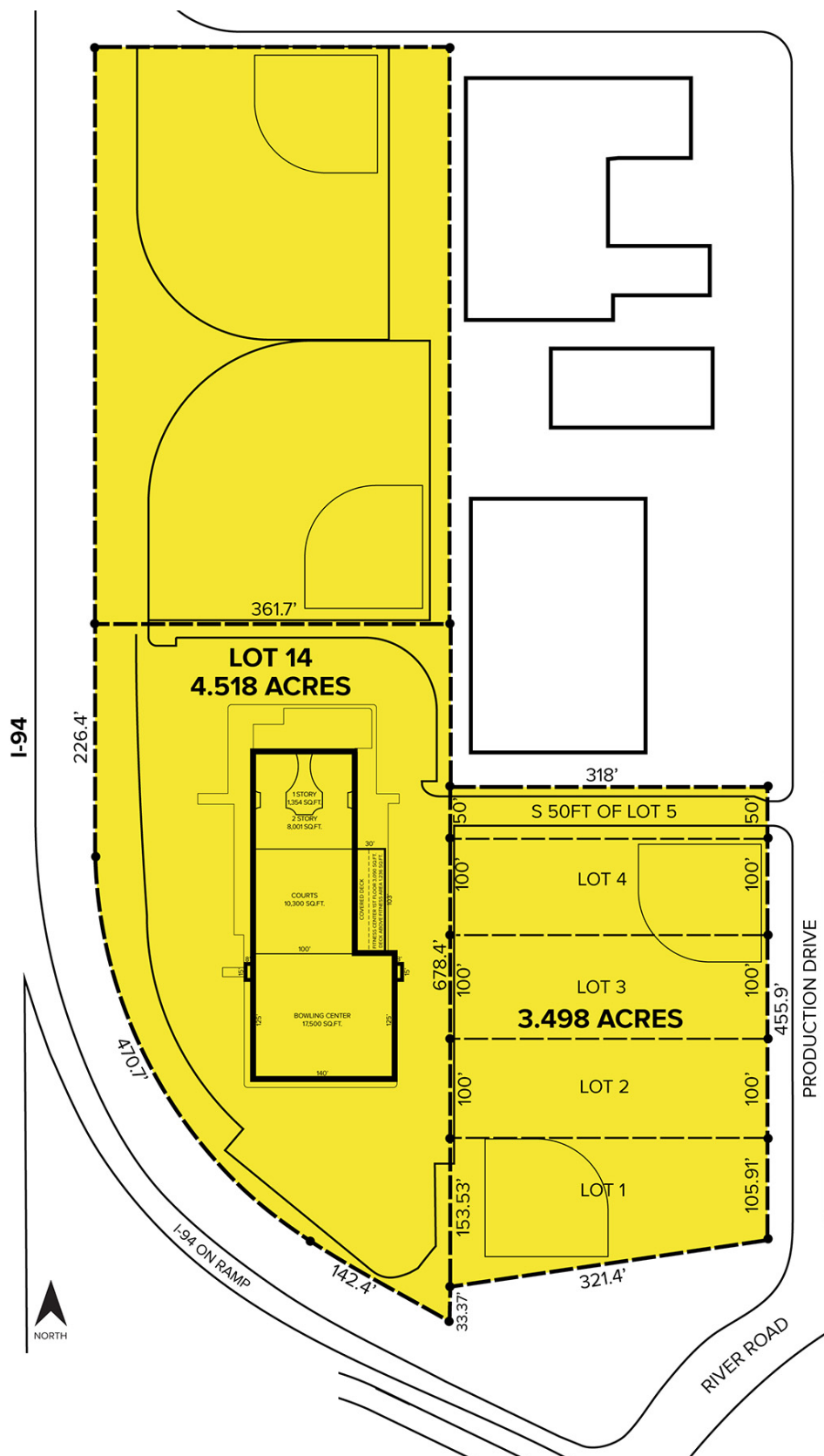
**SIGNATURE ASSOCIATES**  
One Towne Square, Suite 1200  
Southfield, MI 48076  
www.signatureassociates.com

# 40501 Production Drive – Harrison Twp., Michigan

## Industrial For Sale

54,140  
Square Feet  
AVAILABLE

### Site Plan



For more information, please contact:

**CHRIS MONSOUR**  
(248) 948 0107  
cmonsour@signatureassociates.com

**SIGNATURE ASSOCIATES**  
One Towne Square, Suite 1200  
Southfield, MI 48076  
www.signatureassociates.com



# 40501 Production Drive – Harrison Twp., Michigan

## Industrial For Sale

54,140  
Square Feet  
AVAILABLE

Aerial



For more information, please contact:

**CHRIS MONSOUR**  
(248) 948 0107  
[cmonsour@signatureassociates.com](mailto:cmonsour@signatureassociates.com)

**SIGNATURE ASSOCIATES**  
One Towne Square, Suite 1200  
Southfield, MI 48076  
[www.signatureassociates.com](http://www.signatureassociates.com)

Information is subject to verification and no liability for errors or omissions is assumed. Price is subject to change and listing withdrawal.