

7131 MICHIGAN AVENUE
DETROIT, MICHIGAN

RETAIL FOR SALE
3,500 Square Feet Available



**SIGNATURE
ASSOCIATES**
KNOW SIGNATURE | KNOW RESULTS



PROPERTY FEATURES

- 3,500 available square feet
- Zoned B4
- Built in 1931, retrofit in 2005
- Ample parking
- Single-story portion of building available
- Sale Price: \$195,000 (\$55.71/sq.ft.)



For more information, please contact:

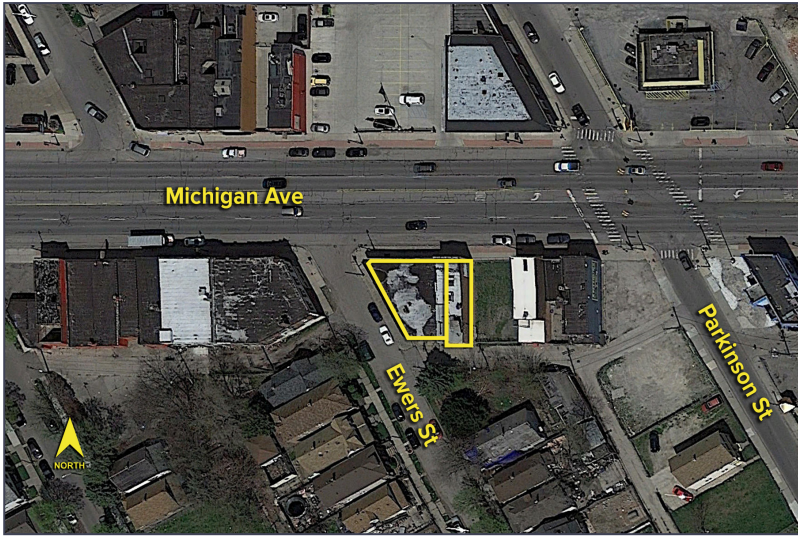
CHRIS MONSOUR
(248) 948 0107
cmonsour@signatureassociates.com

SIGNATURE ASSOCIATES
One Towne Square, Suite 1200
Southfield, MI 48076
www.signatureassociates.com

7131 Michigan Avenue – Detroit, Michigan

Retail For Sale

3,500
Square Feet
AVAILABLE

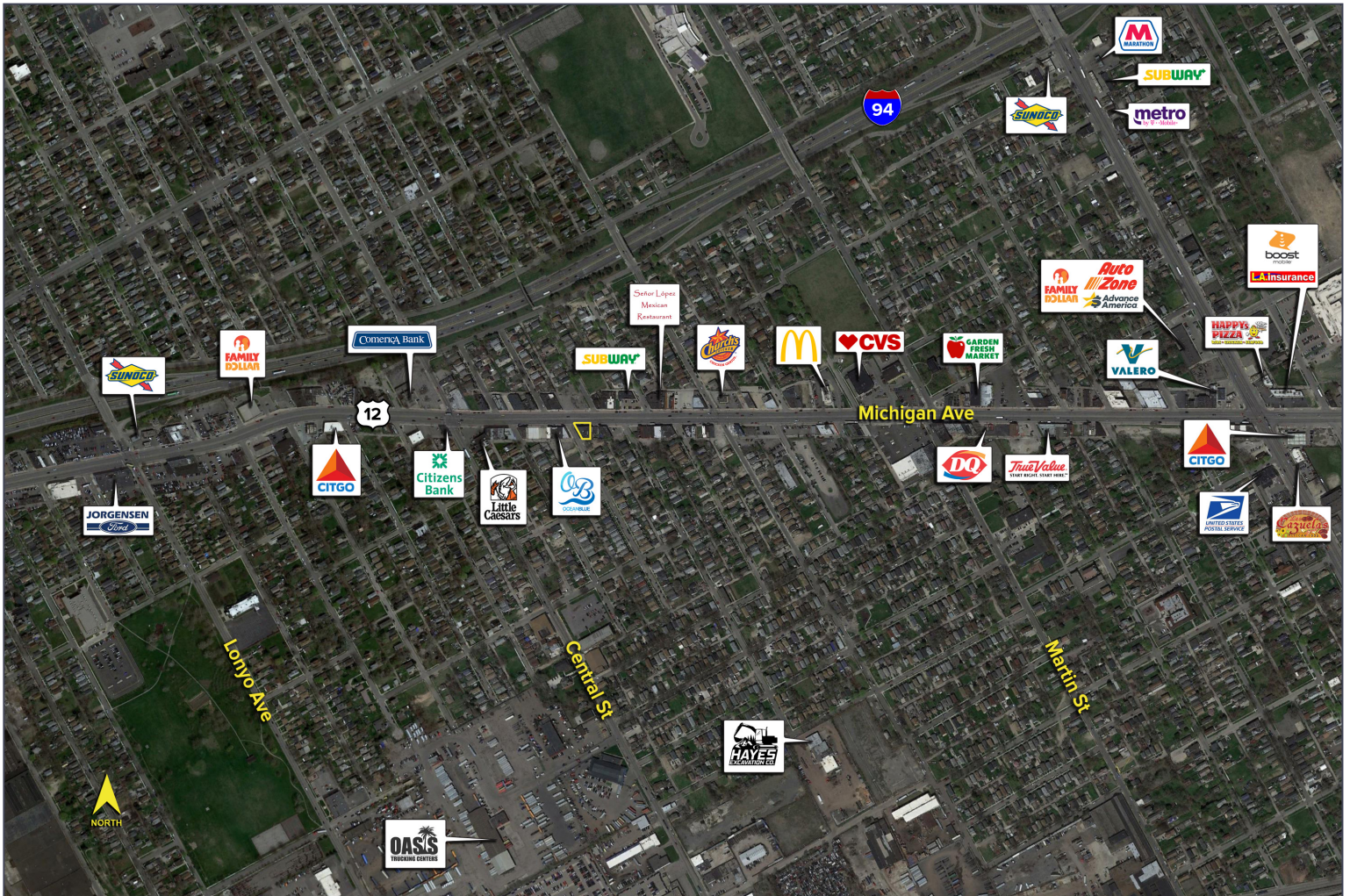


DEMOGRAPHICS

	POPULATION	MED. HH INCOME
1 MILE	19,834	\$33,862
3 MILE	135,010	\$32,811
5 MILE	304,048	\$33,499

TRAFFIC COUNTS (TWO-WAY)

21,934	Michigan Ave. E. of Central Ave. 2-Way
22,021	Michigan Ave. W. of Central Ave. 2-Way
141,889	I-94 & Central Ave. 2-Way
8,500	Central Ave. & Michigan Ave. 2-Way



For more information, please contact:
CHRIS MONSOUR
 (248) 948 0107
cmonsour@signatureassociates.com

SIGNATURE ASSOCIATES
 One Towne Square, Suite 1200
 Southfield, MI 48076
www.signatureassociates.com

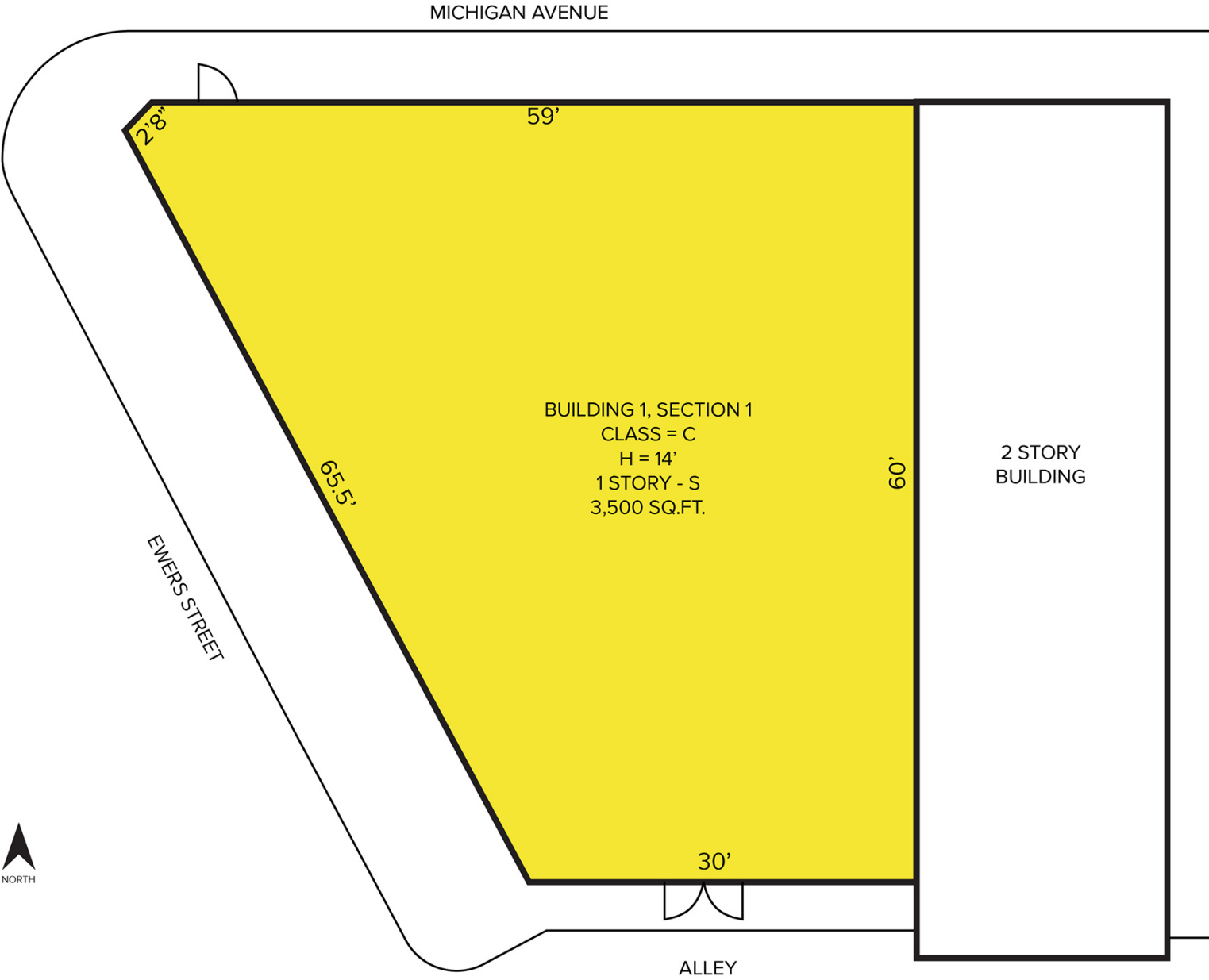
Information is subject to verification and no liability for errors or omissions is assumed. Price is subject to change and listing withdrawal.

7131 Michigan Avenue – Detroit, Michigan

Retail For Sale

3,500
Square Feet
AVAILABLE

Site Plan



For more information, please contact:
CHRIS MONSOUR
(248) 948 0107
cmonsour@signatureassociates.com

SIGNATURE ASSOCIATES
One Towne Square, Suite 1200
Southfield, MI 48076
www.signatureassociates.com

Information is subject to verification and no liability for errors or omissions is assumed. Price is subject to change and listing withdrawal.