

5750 NEW KING DRIVE  
TROY, MICHIGAN

OFFICE FOR LEASE  
2,000 – 3,400 Square Feet Available



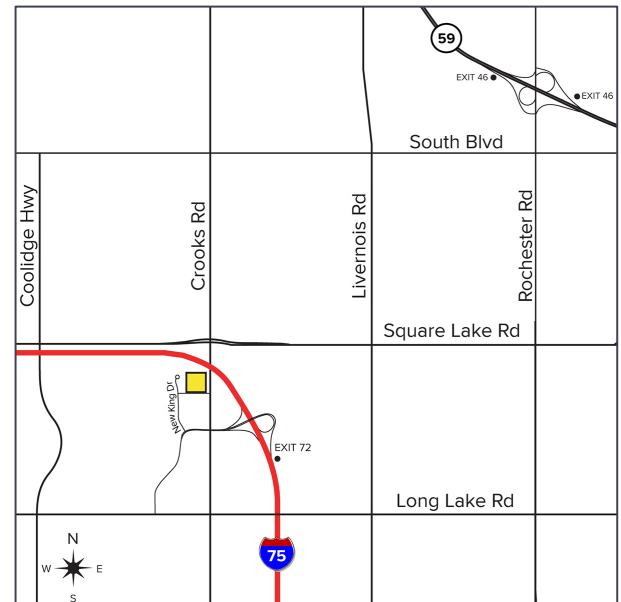
**SIGNATURE  
ASSOCIATES**  
KNOW SIGNATURE | KNOW RESULTS

FULLY RENOVATED - PREMIER OFFICE BUILDING



## PROPERTY FEATURES

- 2,000 – 3,400 square feet available
- New self-serve café on-site
- Recently renovated – modern open plan with interior glass and lobby exposure
- Beautiful white Carrara marble interior lobby, bathrooms and exterior façade
- Interior glass with lobby exposure
- Located near entrance to I-75, Life Time Fitness, hotels, restaurants and shopping
- Lease Rate: \$18.95/sq.ft. Gross + Electric



For more information, please contact:

**DAVE MILLER**  
(248) 948 4183  
dmiller@signatureassociates.com

**JOHN BOYD**  
(248) 948 0102  
jobyd@signatureassociates.com

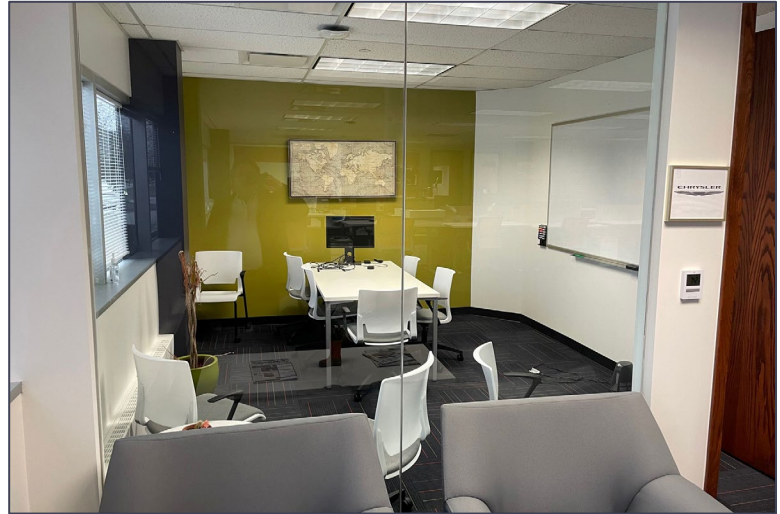
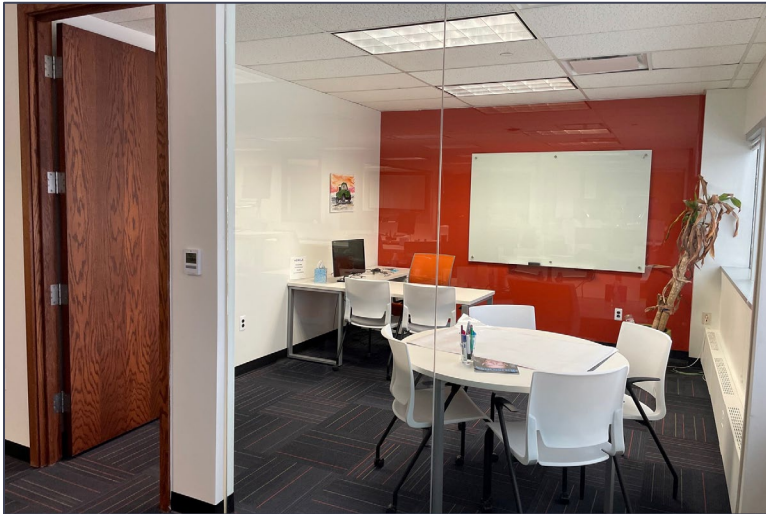
**SIGNATURE ASSOCIATES**  
One Towne Square, Suite 1200  
Southfield, MI 48076  
www.signatureassociates.com

# 5750 New King Drive - Troy, Michigan

## Office For Lease

2,000-3,400  
Square Feet  
AVAILABLE

### Interior Photos



For more information, please contact:

**DAVE MILLER**  
(248) 948 4183  
dmiller@signatureassociates.com

**JOHN BOYD**  
(248) 948 0102  
jobyd@signatureassociates.com

**SIGNATURE ASSOCIATES**  
One Towne Square, Suite 1200  
Southfield, MI 48076  
www.signatureassociates.com

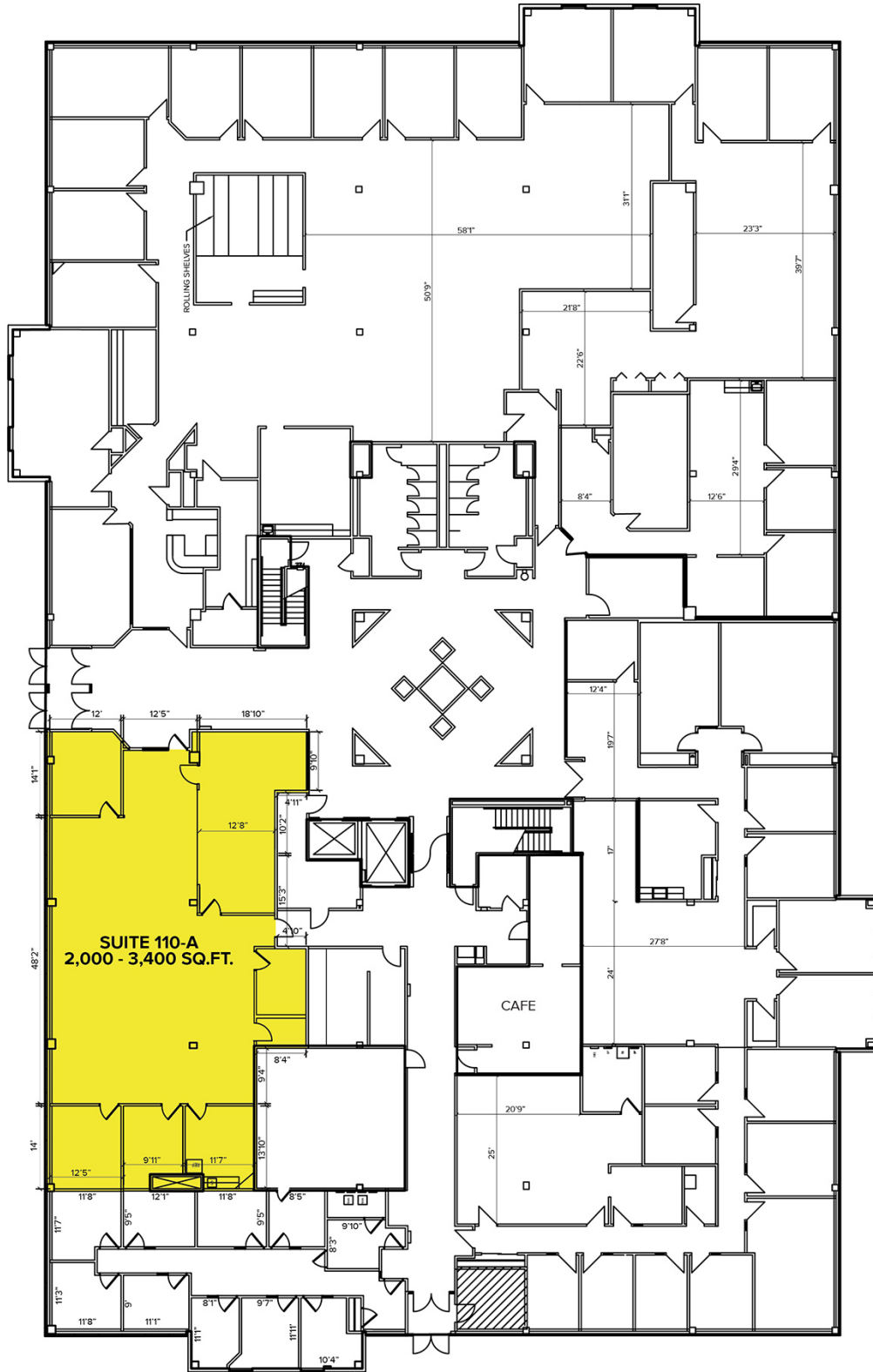
# 5750 New King Drive - Troy, Michigan

## Office For Lease

2,000-3,400  
Square Feet  
AVAILABLE

### Floor Plan

FIRST FLOOR



For more information, please contact:

**DAVE MILLER**  
(248) 948 4183  
dmiller@signatureassociates.com

**JOHN BOYD**  
(248) 948 0102  
jobyd@signatureassociates.com

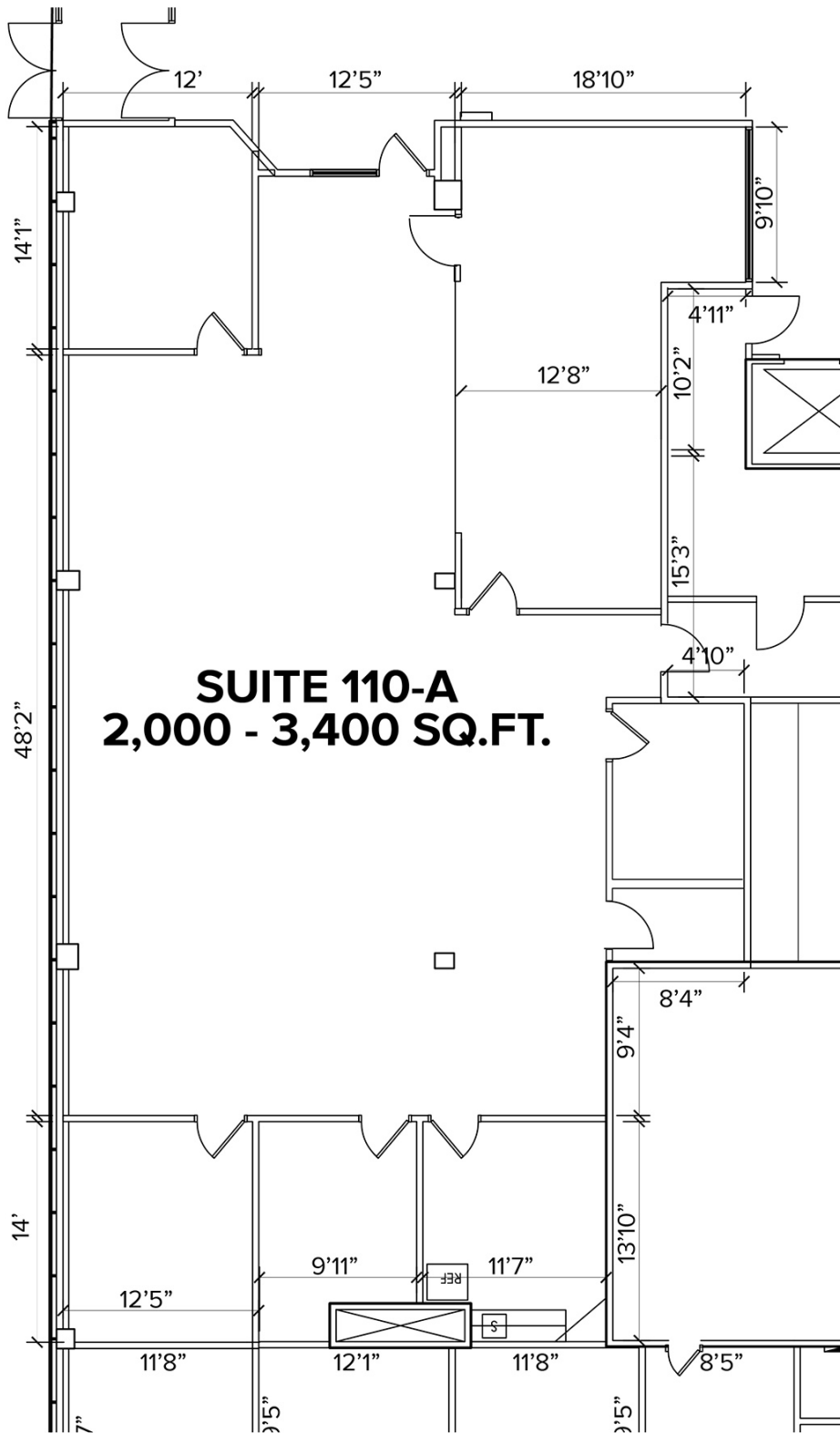
**SIGNATURE ASSOCIATES**  
One Towne Square, Suite 1200  
Southfield, MI 48076  
www.signatureassociates.com

# 5750 New King Drive - Troy, Michigan

Office For Lease

2,000-3,400  
Square Feet  
AVAILABLE

Suite 110-A



For more information, please contact:

**DAVE MILLER**  
(248) 948 4183  
dmiller@signatureassociates.com

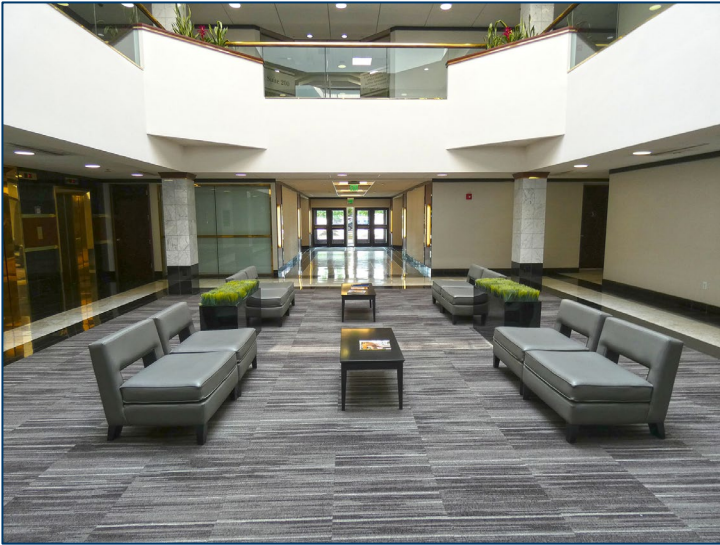
**JOHN BOYD**  
(248) 948 0102  
jobyd@signatureassociates.com

**SIGNATURE ASSOCIATES**  
One Towne Square, Suite 1200  
Southfield, MI 48076  
www.signatureassociates.com

# 5750 New King Drive - Troy, Michigan

Office For Lease

2,000-3,400  
Square Feet  
AVAILABLE



For more information, please contact:

**DAVE MILLER**  
(248) 948 4183  
dmiller@signatureassociates.com

**JOHN BOYD**  
(248) 948 0102  
jobyd@signatureassociates.com

**SIGNATURE ASSOCIATES**  
One Towne Square, Suite 1200  
Southfield, MI 48076  
www.signatureassociates.com