

25900 ELEVEN MILE ROAD
SOUTHFIELD, MICHIGAN

OFFICE FOR SALE OR LEASE
6,918–31,000 Square Feet Available



**SIGNATURE
ASSOCIATES**
KNOW SIGNATURE | KNOW RESULTS

CORPORATE OFFICE BUILDING



PROPERTY FEATURES

- 6,918 – 31,000 square feet available for lease with many different options from full floor to total building
- 15,500 square foot 1st and 2nd floors available for sale with option to buy the entire 31,000 square foot building
- Healthy “Lifestyle” campus with walking trails and water features
- Low-contact entrances (open stairway and exterior entrances)
- Many hotels, restaurants, and amenities nearby
- Lease Rate: \$19.95 G+E



For more information, please contact:

DAVE MILLER
(248) 948 4183
dmiller@signatureassociates.com

SIGNATURE ASSOCIATES
One Towne Square, Suite 1200
Southfield, MI 48076
www.signatureassociates.com

25900 Eleven Mile Road – Southfield, Michigan

Office For Sale or Lease

6,918-31,000
Square Feet
AVAILABLE

Interior Photos



For more information, please contact:

DAVE MILLER
(248) 948 4183
dmiller@signatureassociates.com

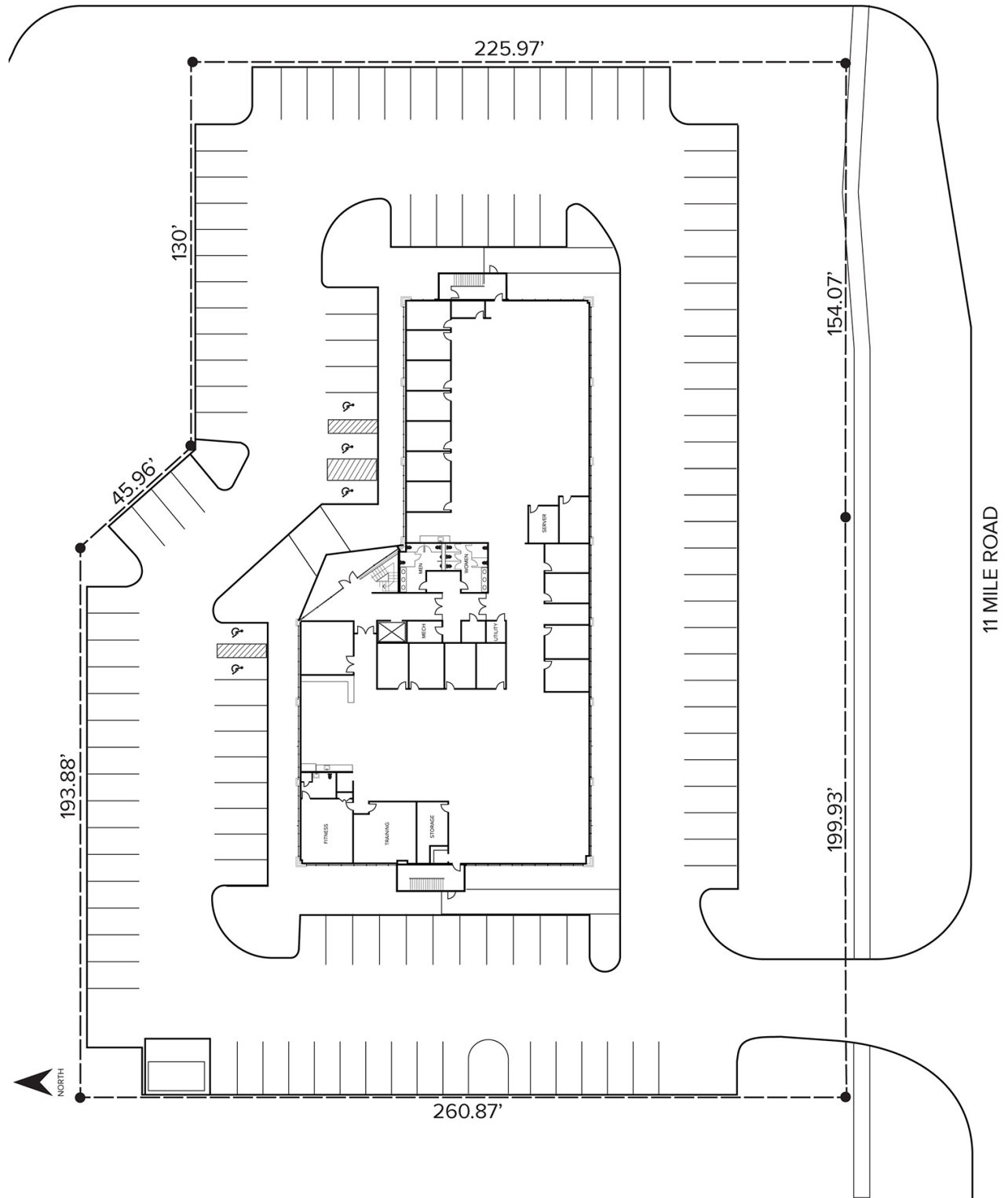
SIGNATURE ASSOCIATES
One Towne Square, Suite 1200
Southfield, MI 48076
www.signatureassociates.com

25900 Eleven Mile Road – Southfield, Michigan

Office For Sale or Lease

6,918-31,000
Square Feet
AVAILABLE

Site Plan



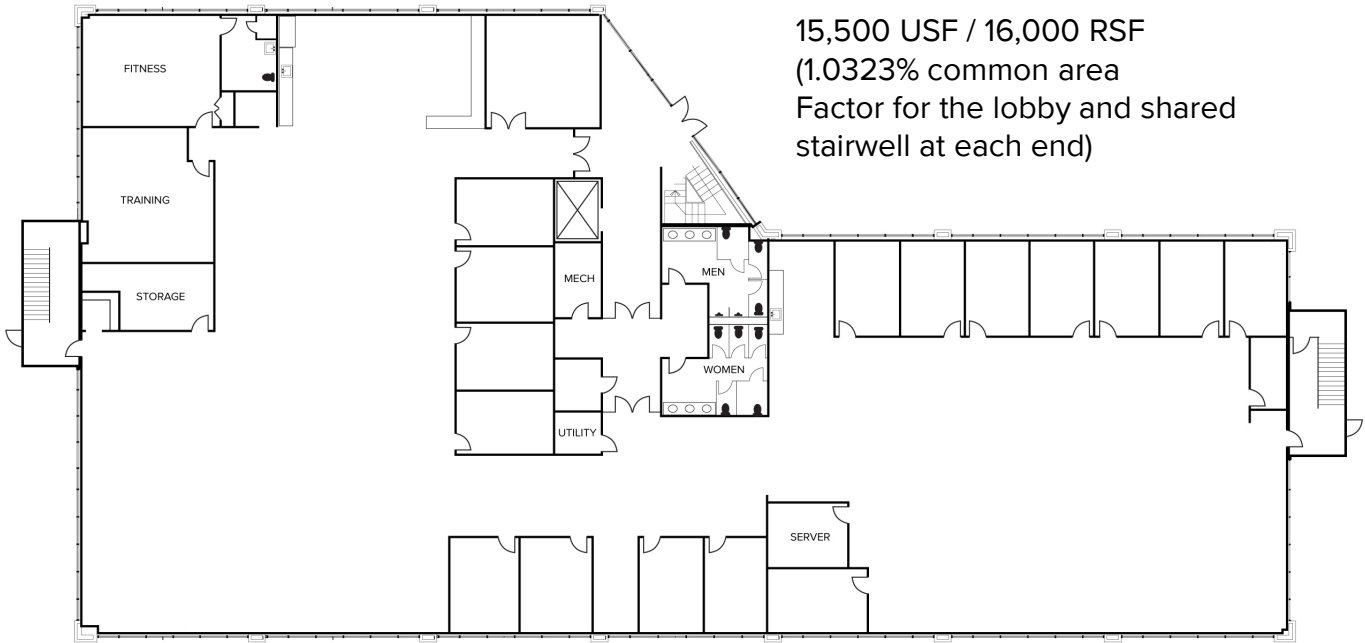
For more information, please contact:

DAVE MILLER
(248) 948 4183
dmiller@signatureassociates.com

SIGNATURE ASSOCIATES
One Towne Square, Suite 1200
Southfield, MI 48076
www.signatureassociates.com

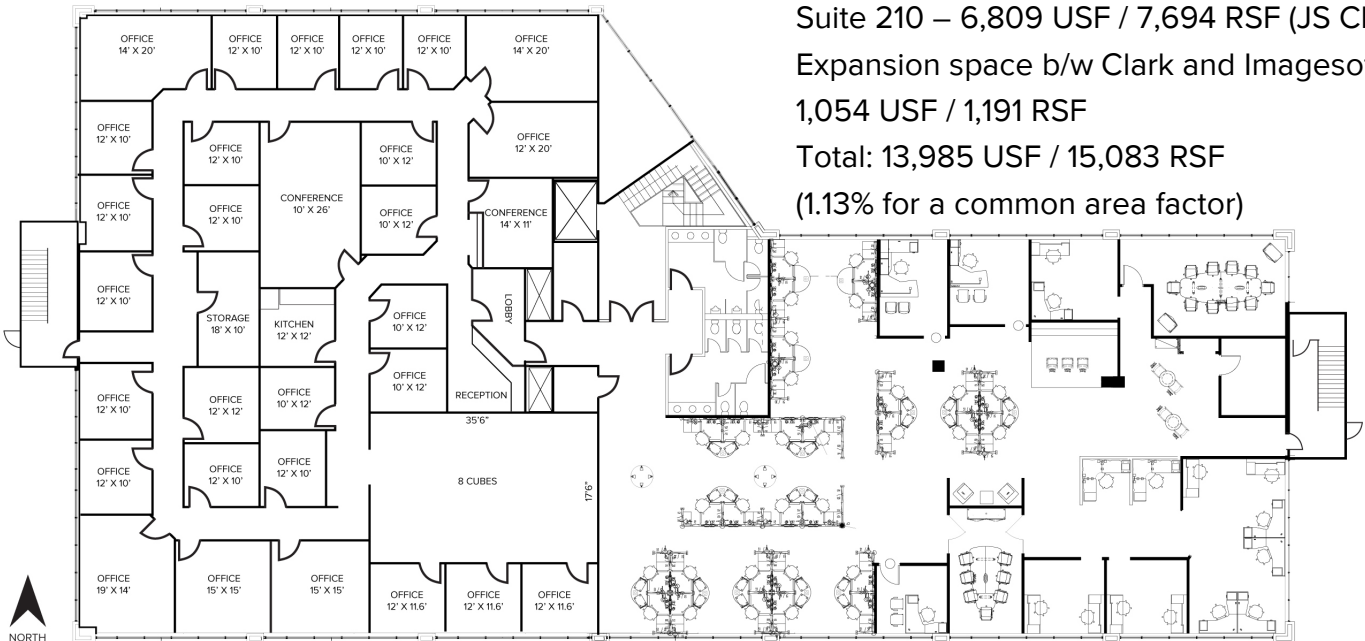
Floor Plans

FIRST FLOOR



15,500 USF / 16,000 RSF
(1.0323% common area
Factor for the lobby and shared
stairwell at each end)

SECOND FLOOR



Suite 200 – 6,122 USF / 6,918 RSF (Imagesoft)
Suite 210 – 6,809 USF / 7,694 RSF (JS Clark)
Expansion space b/w Clark and Imagesoft:
1,054 USF / 1,191 RSF
Total: 13,985 USF / 15,083 RSF
(1.13% for a common area factor)

For more information, please contact:

DAVE MILLER
(248) 948 4183
dmiller@signatureassociates.com

SIGNATURE ASSOCIATES
One Towne Square, Suite 1200
Southfield, MI 48076
www.signatureassociates.com

25900 Eleven Mile Road – Southfield, Michigan

Office For Sale or Lease

6,918-31,000
Square Feet
AVAILABLE

Aerial



- Several Hotels within Walking Distance with Many More Choices within 2 Miles
- Excellent Location Near I-696 Exit/Entrance & Telegraph Road Entrance/Northwestern Highway

For more information, please contact:

DAVE MILLER
(248) 948 4183
dmiller@signatureassociates.com

SIGNATURE ASSOCIATES
One Towne Square, Suite 1200
Southfield, MI 48076
www.signatureassociates.com