

1809 JAMES P. COLE BLVD.
FLINT, MICHIGAN

OFFICE FOR LEASE
10,000-16,000 Square Feet Available



**SIGNATURE
ASSOCIATES**
KNOW SIGNATURE | KNOW RESULTS



PROPERTY FEATURES

- 10,000 – 16,000 square feet available
- Modern office environment / mix of open space and rooms
- Retrofitted in 2013
- Site zoned heavy industrial and allows office
- Ample parking spaces
- 4.42 acres overall site
- Lease Rate: \$10.00/sq.ft. Gross



For more information, please contact:

DAVE MILLER
(248) 948 4183
dmiller@signatureassociates.com

SIGNATURE ASSOCIATES
One Towne Square, Suite 1200
Southfield, MI 48076
www.signatureassociates.com

1809 James P. Cole Blvd. – Flint, Michigan

Office For Lease

10,000-16,000
Square Feet
AVAILABLE

Photos



For more information, please contact:

DAVE MILLER
(248) 948 4183
dmiller@signatureassociates.com

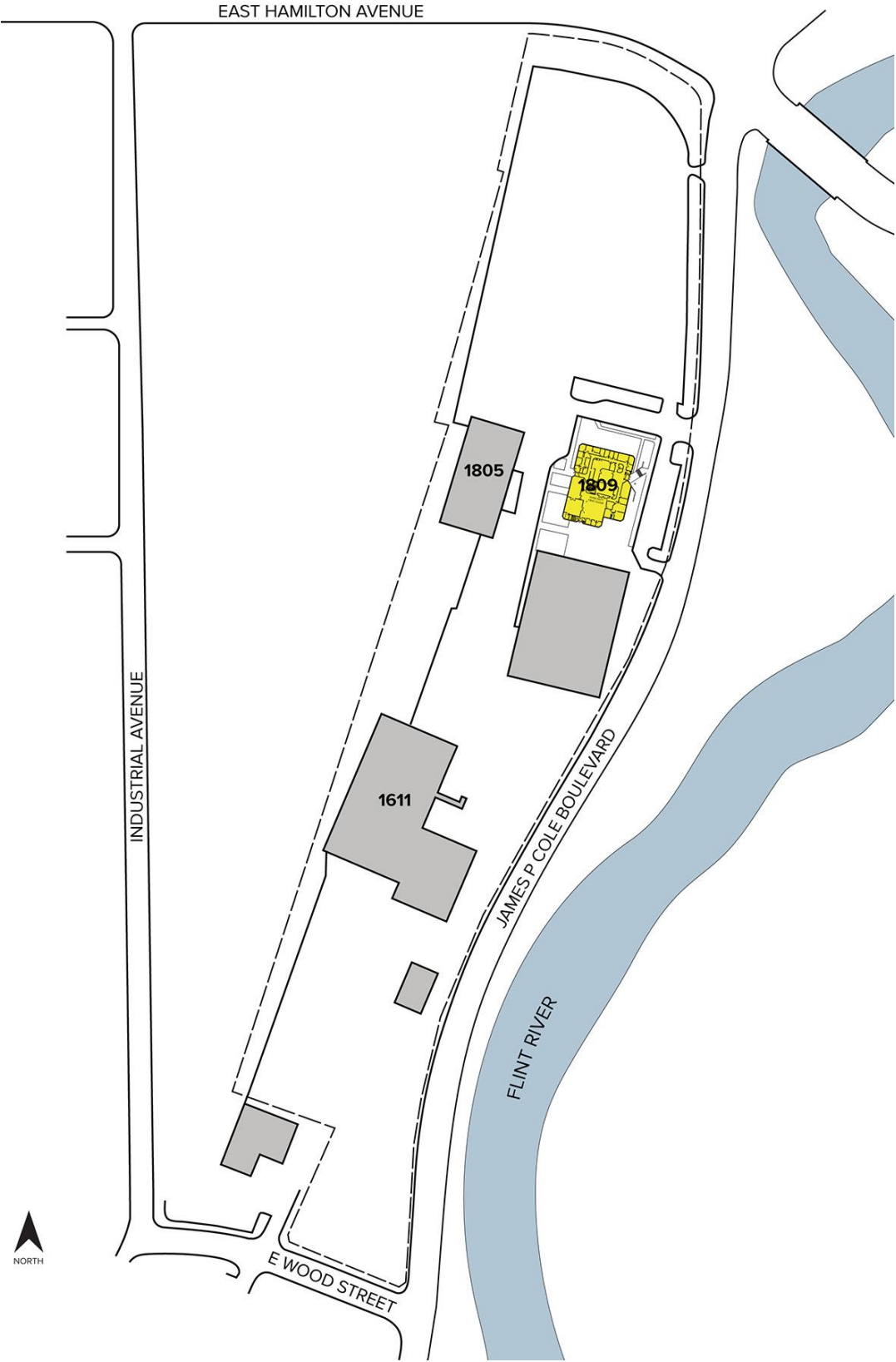
SIGNATURE ASSOCIATES
One Towne Square, Suite 1200
Southfield, MI 48076
www.signatureassociates.com

1809 James P. Cole Blvd. – Flint, Michigan

Office For Lease

10,000-16,000
Square Feet
AVAILABLE

Site Plan

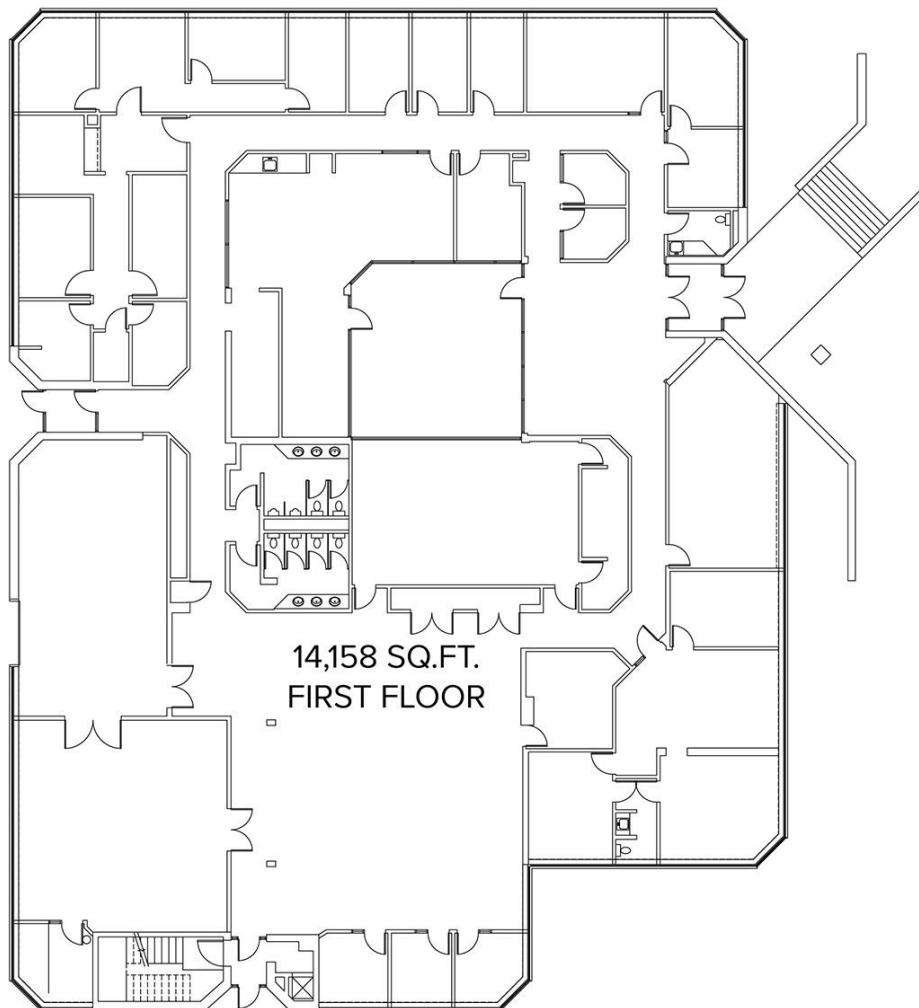


For more information, please contact:
DAVE MILLER
(248) 948 4183
dmiller@signatureassociates.com

SIGNATURE ASSOCIATES
One Towne Square, Suite 1200
Southfield, MI 48076
www.signatureassociates.com

Information is subject to verification and no liability for errors or omissions is assumed. Price is subject to change and listing withdrawal.

Floor Plan



For more information, please contact:

DAVE MILLER
(248) 948 4183
dmiller@signatureassociates.com

SIGNATURE ASSOCIATES
One Towne Square, Suite 1200
Southfield, MI 48076
www.signatureassociates.com

1809 James P. Cole Blvd. – Flint, Michigan

Office For Lease

10,000-16,000
Square Feet
AVAILABLE

Aerial



For more information, please contact:

DAVE MILLER
(248) 948 4183
dmiller@signatureassociates.com

SIGNATURE ASSOCIATES
One Towne Square, Suite 1200
Southfield, MI 48076
www.signatureassociates.com