

341 E. MAIN STREET
NORTHVILLE TWP., MICHIGAN

OFFICE FOR SALE OR LEASE
1,290-2,580 Square Feet Available



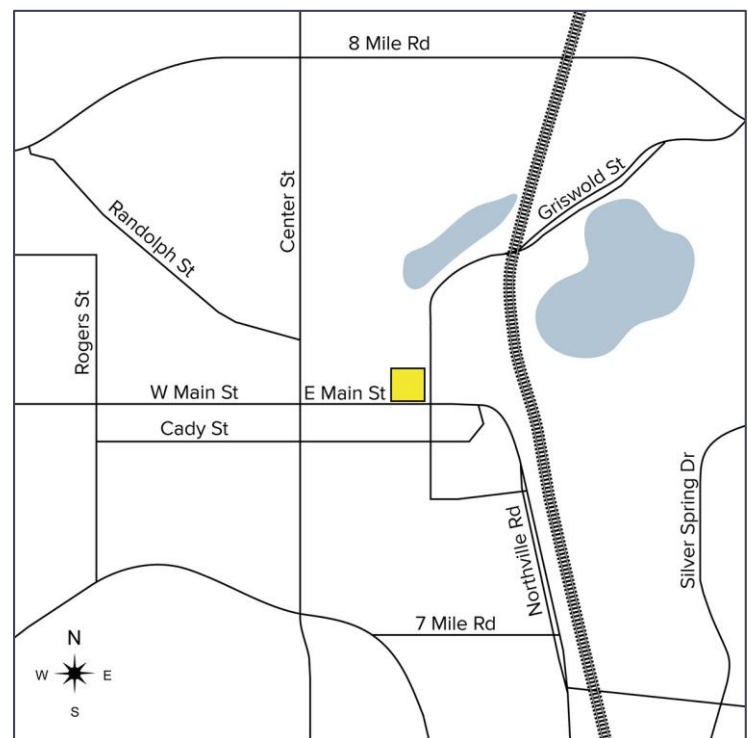
**SIGNATURE
ASSOCIATES**
KNOW SIGNATURE | KNOW RESULTS

GREAT LOCATION



PROPERTY FEATURES

- 1,290 – 2,580 square foot total building available for sale or lease
- Historical treasure in downtown Northville zoned CBD undergoing a complete renovation
- Second floor available for lease individually with it's own separate entrance
- ADA ramp already in place
- Backs to Mill Race Park
- Outstanding traffic including parades, concerts, and festivals
- Many potential office uses
- 14 surface parking spaces
- Contact Broker for pricing



For more information, please contact:

DAVE MILLER
(248) 948 4183
dmiller@signatureassociates.com

RICK BIRDSALL
(248) 799 3145
rbirdsall@signatureassociates.com

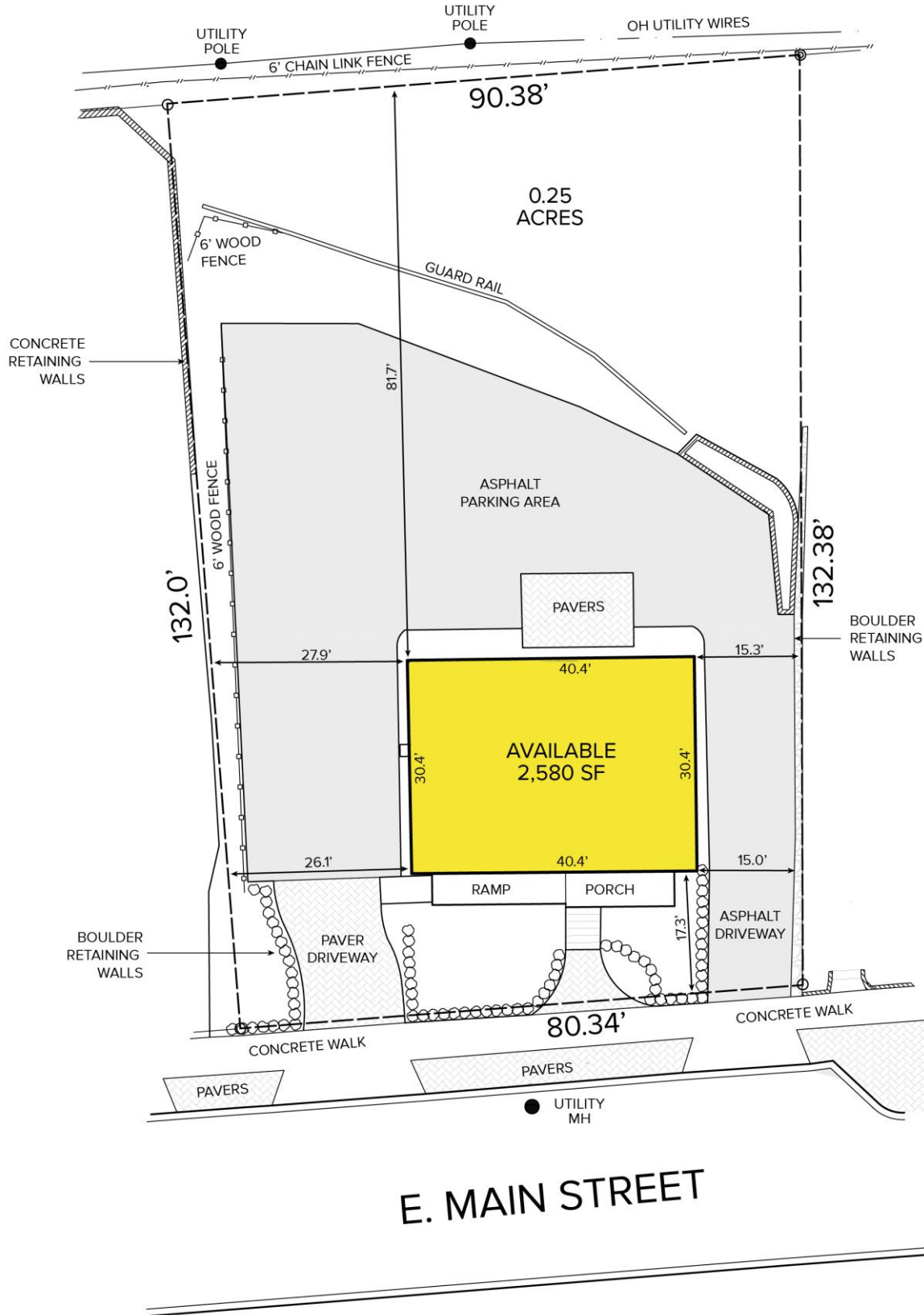
SIGNATURE ASSOCIATES
One Towne Square, Suite 1200
Southfield, MI 48076
www.signatureassociates.com

341 E. Main Street – Northville Twp., Michigan

Office For Lease

1,290-2,580
Square Feet
AVAILABLE

Site Plan



For more information, please contact:

DAVE MILLER
(248) 948 4183

dmiller@signatureassociates.com

RICK BIRDSALL
(248) 799 3145

rbirdsall@signatureassociates.com

SIGNATURE ASSOCIATES
One Towne Square, Suite 1200
Southfield, MI 48076
www.signatureassociates.com