

3600 GIDDINGS ROAD
AUBURN HILLS, MICHIGAN

INDUSTRIAL FOR SALE OR LEASE
443,340 Square Feet Available



**SIGNATURE
ASSOCIATES**
KNOW SIGNATURE | KNOW RESULTS

I-75 FRONTAGE



PROPERTY FEATURES

- 346,182 square feet available for lease
- 62,410 square feet of office space
- 443,340 square foot building situated on 28 acres
- Zoned Industrial, T&R
- 30' clear height
- (3) 12x14 grade level doors, (7) truckwells
- First-class trophy building fronting I-75
- Buss duct, air lines, paint room, explosion proof storage, clean room and backup generator
- 375 parking spaces
- 2000 amps, 480 volts power
- Sale Price: \$41,750,000 (\$94.17/sf)
- Lease rate: \$7.50/NNN



For more information, please contact:

JOE HAMWAY
(248) 948 0113

jhamway@signatureassociates.com

GREG HUDAS
(248) 799 3162

ghudas@signatureassociates.com

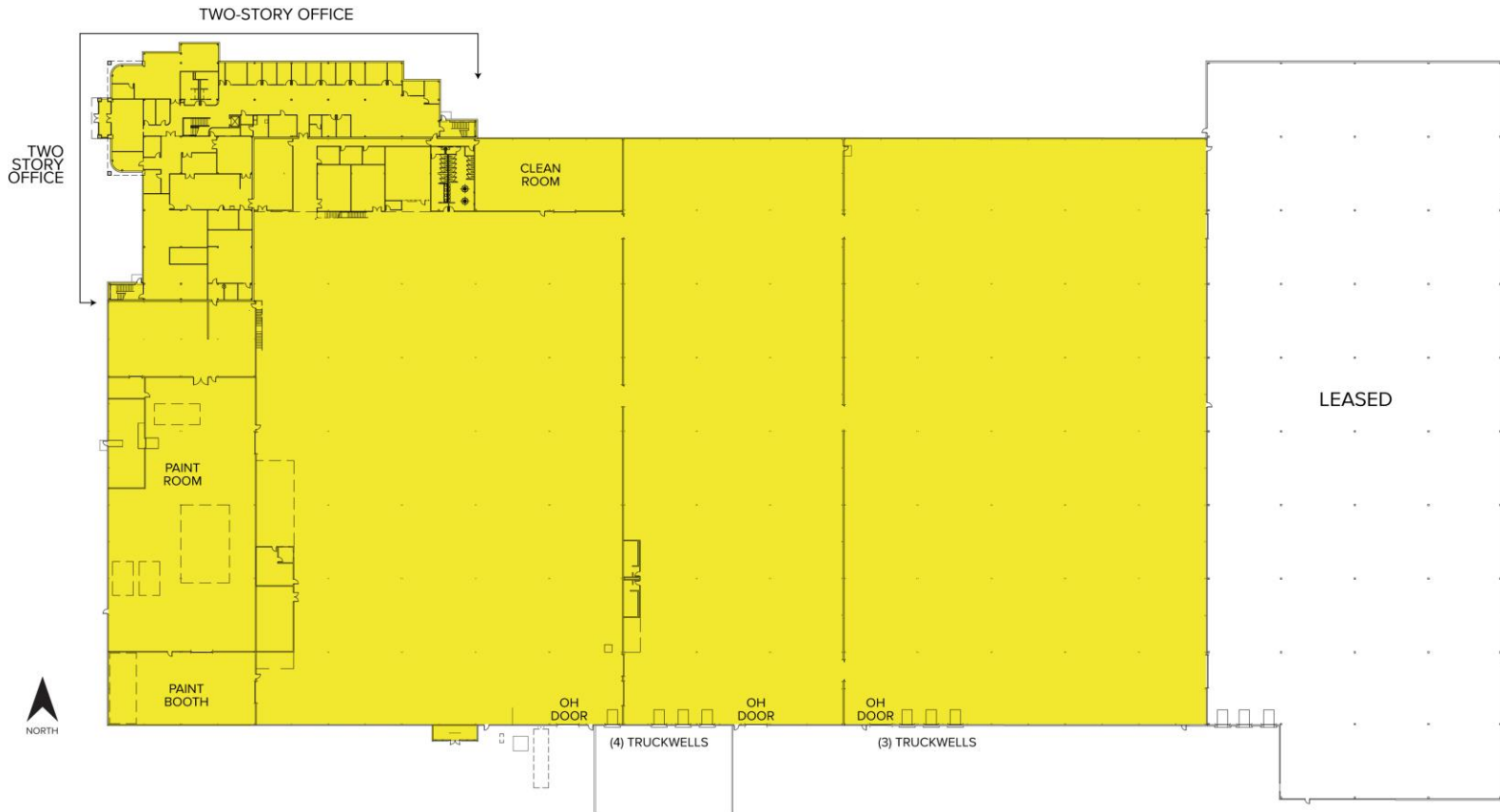
SIGNATURE ASSOCIATES
One Towne Square, Suite 1200
Southfield, MI 48076
www.signatureassociates.com

3600 Giddings Road – Auburn Hills, Michigan

Industrial For Sale or Lease

443,340
Square Feet
AVAILABLE

Floor Plan



For more information, please contact:

JOE HAMWAY

(248) 948 0113

jhamway@signatureassociates.com

GREG HUDAS

(248) 799 3162

gHUDAS@signatureassociates.com

SIGNATURE ASSOCIATES

One Towne Square, Suite 1200

Southfield, MI 48076

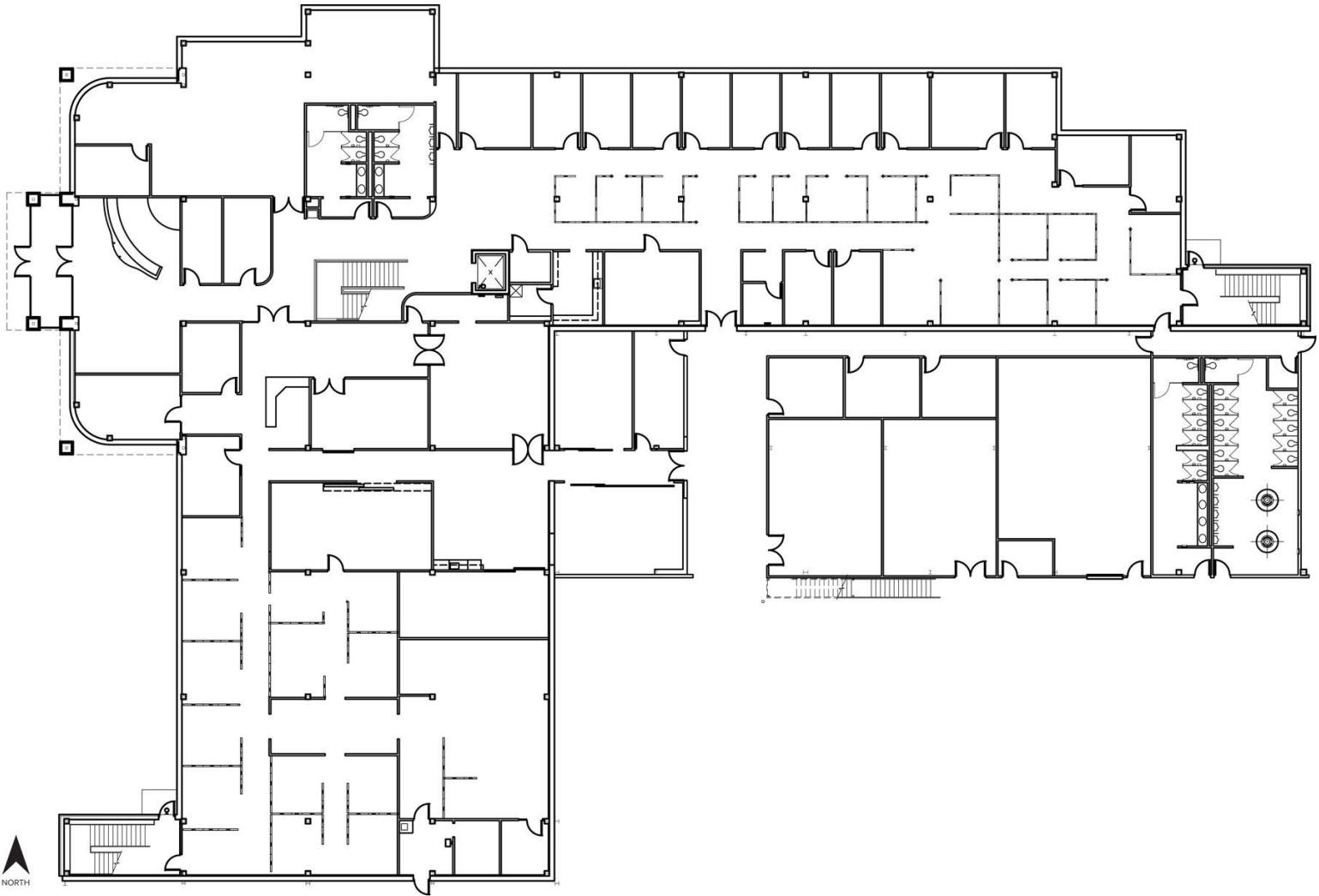
www.signatureassociates.com

3600 Giddings Road – Auburn Hills, Michigan

Industrial For Sale or Lease

443,340
Square Feet
AVAILABLE

Floor Plan – First Floor Office



For more information, please contact:

JOE HAMWAY

(248) 948 0113

jhamway@signatureassociates.com

GREG HUDAS

(248) 799 3162

ghudas@signatureassociates.com

SIGNATURE ASSOCIATES

One Towne Square, Suite 1200

Southfield, MI 48076

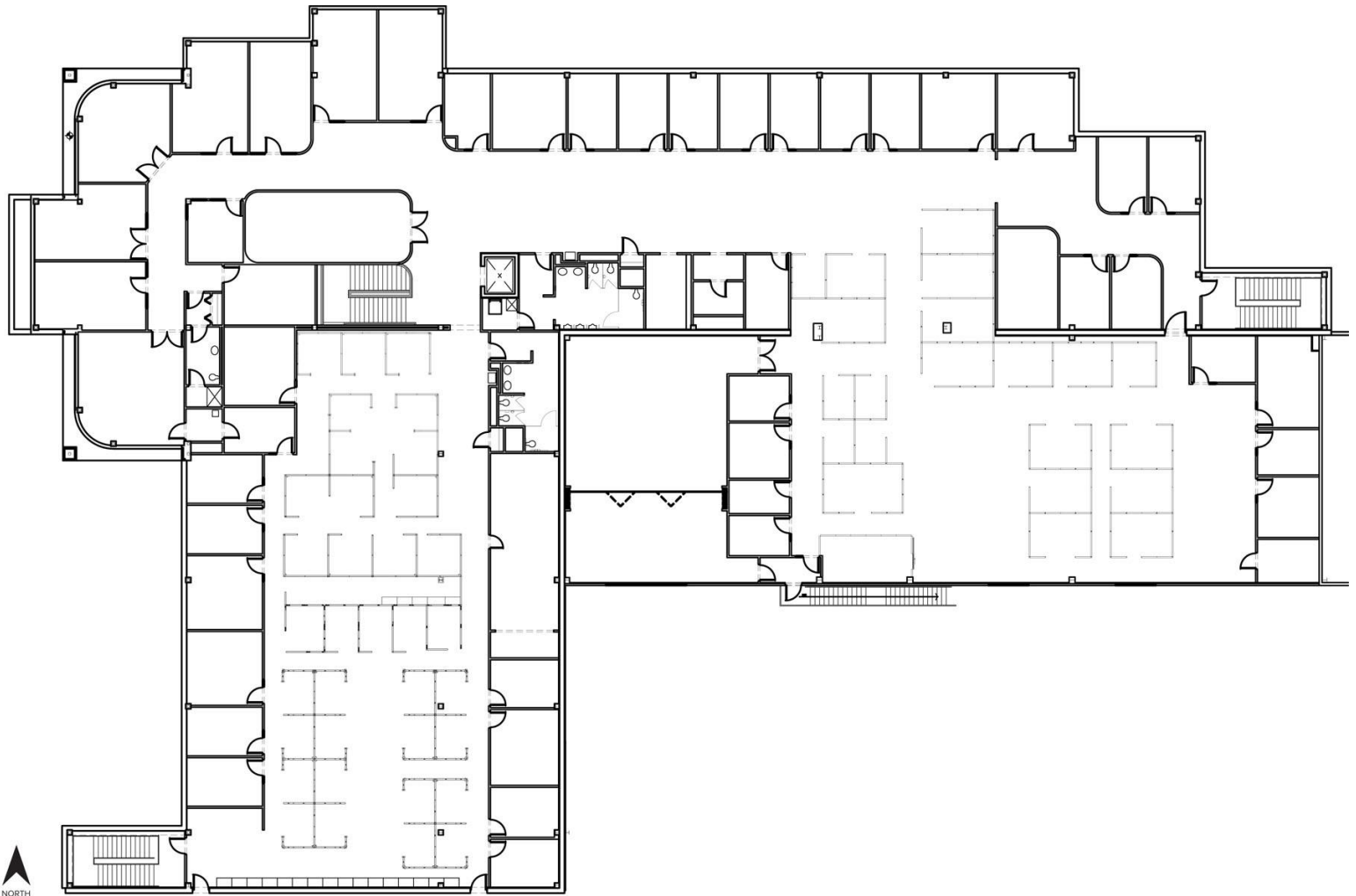
www.signatureassociates.com

3600 Giddings Road – Auburn Hills, Michigan

Industrial For Sale or Lease

443,340
Square Feet
AVAILABLE

Floor Plan – Second Floor Office



For more information, please contact:

JOE HAMWAY

(248) 948 0113

jhamway@signatureassociates.com

GREG HUDAS

(248) 799 3162

ghudas@signatureassociates.com

SIGNATURE ASSOCIATES

One Towne Square, Suite 1200

Southfield, MI 48076

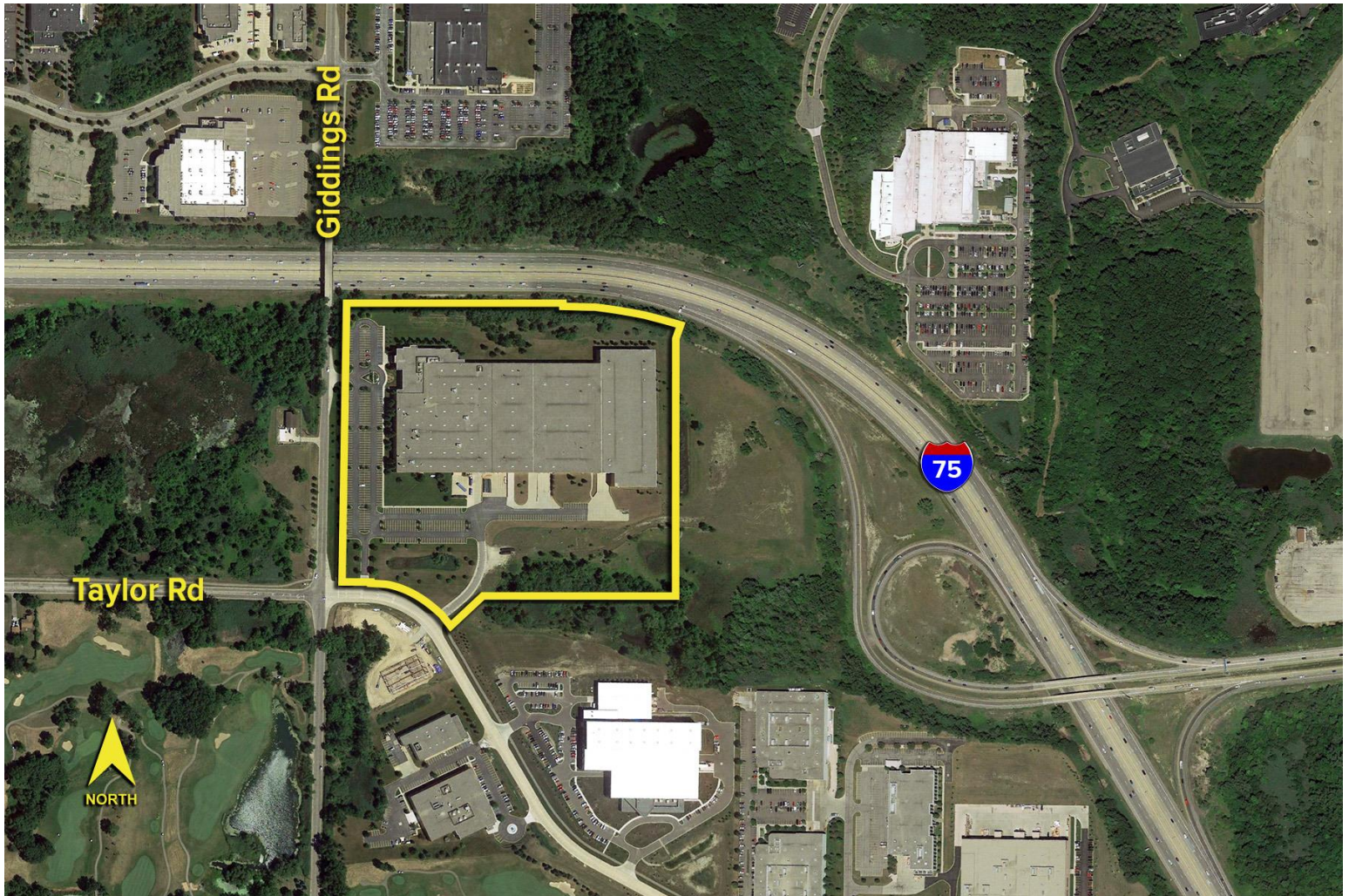
www.signatureassociates.com

3600 Giddings Road – Auburn Hills, Michigan

Industrial For Sale or Lease

443,340
Square Feet
AVAILABLE

Aerial



For more information, please contact:

JOE HAMWAY
(248) 948 0113

jhamway@signatureassociates.com

GREG HUDAS
(248) 799 3162

ghudas@signatureassociates.com

SIGNATURE ASSOCIATES
One Towne Square, Suite 1200
Southfield, MI 48076
www.signatureassociates.com