

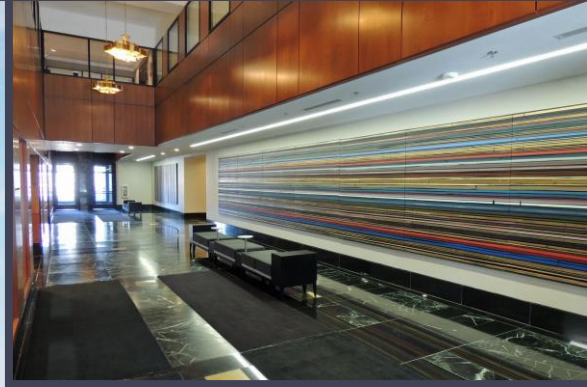
39533 WOODWARD AVE.  
BLOOMFIELD HILLS, MICHIGAN

OFFICE FOR LEASE  
779 – 16,664 Square Feet Available



**SIGNATURE  
ASSOCIATES**  
KNOW SIGNATURE | KNOW RESULTS

## BLOOMFIELD CENTRE - SOUTH



### PROPERTY FEATURES

- 779 – 16,664 square feet available
- Premier full-service office facility
- Recent lobby improvements complete
- Amenities:
  - Secured underground parking
  - On-site management
  - First floor patios
  - Second floor roof terrace
  - Skylight atrium community space
  - Auto spa
  - Food service
  - Fitness center



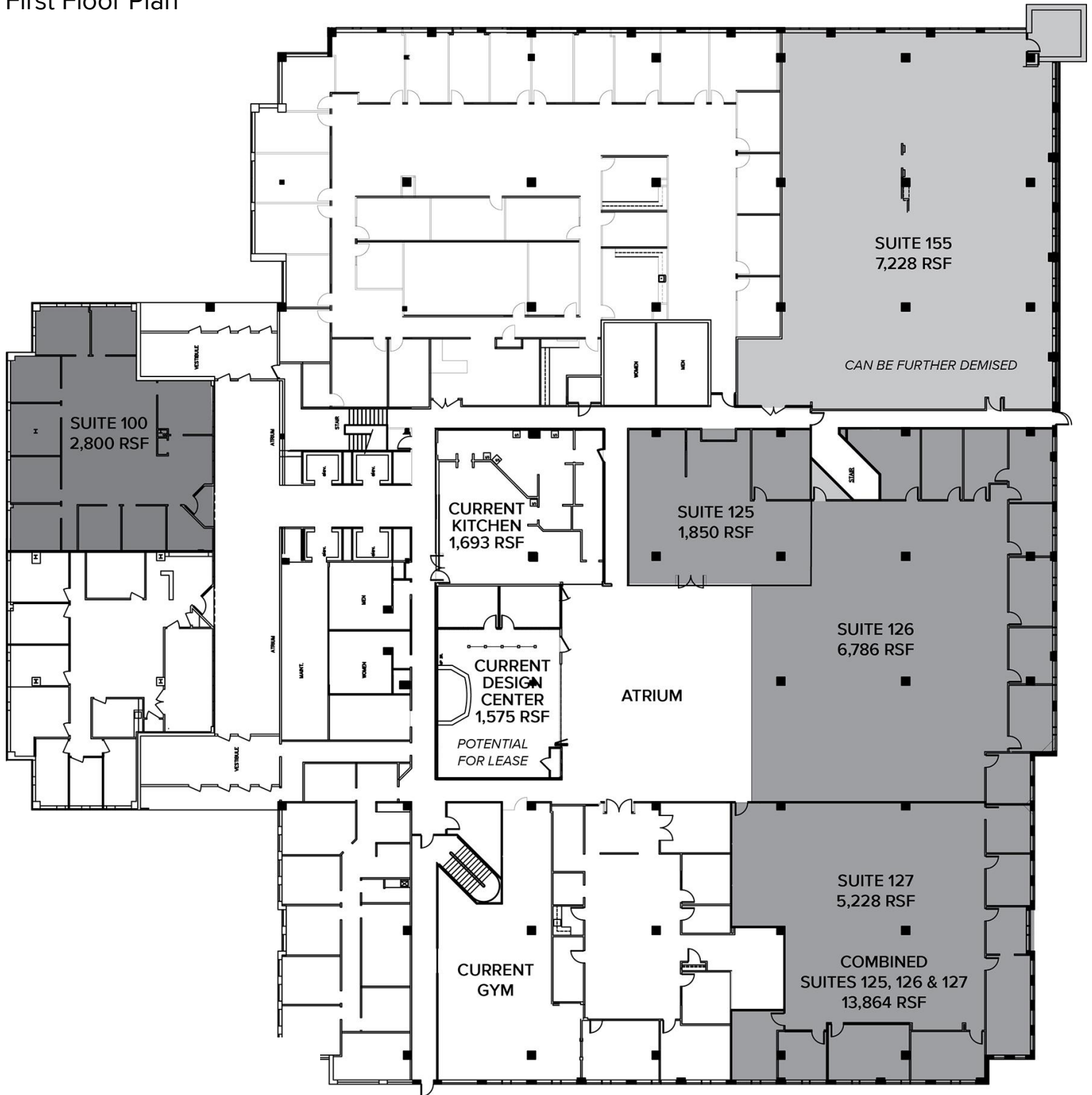
For more information, please contact:

**ERICA DUNLAP**  
(248) 359 3808  
edunlap@signatureassociates.com

**ANGELA THOMAS**  
(248) 359 3838  
athomas@signatureassociates.com

**JOHN GORDY**  
(248) 948 4181  
jgordy@signatureassociates.com

First Floor Plan



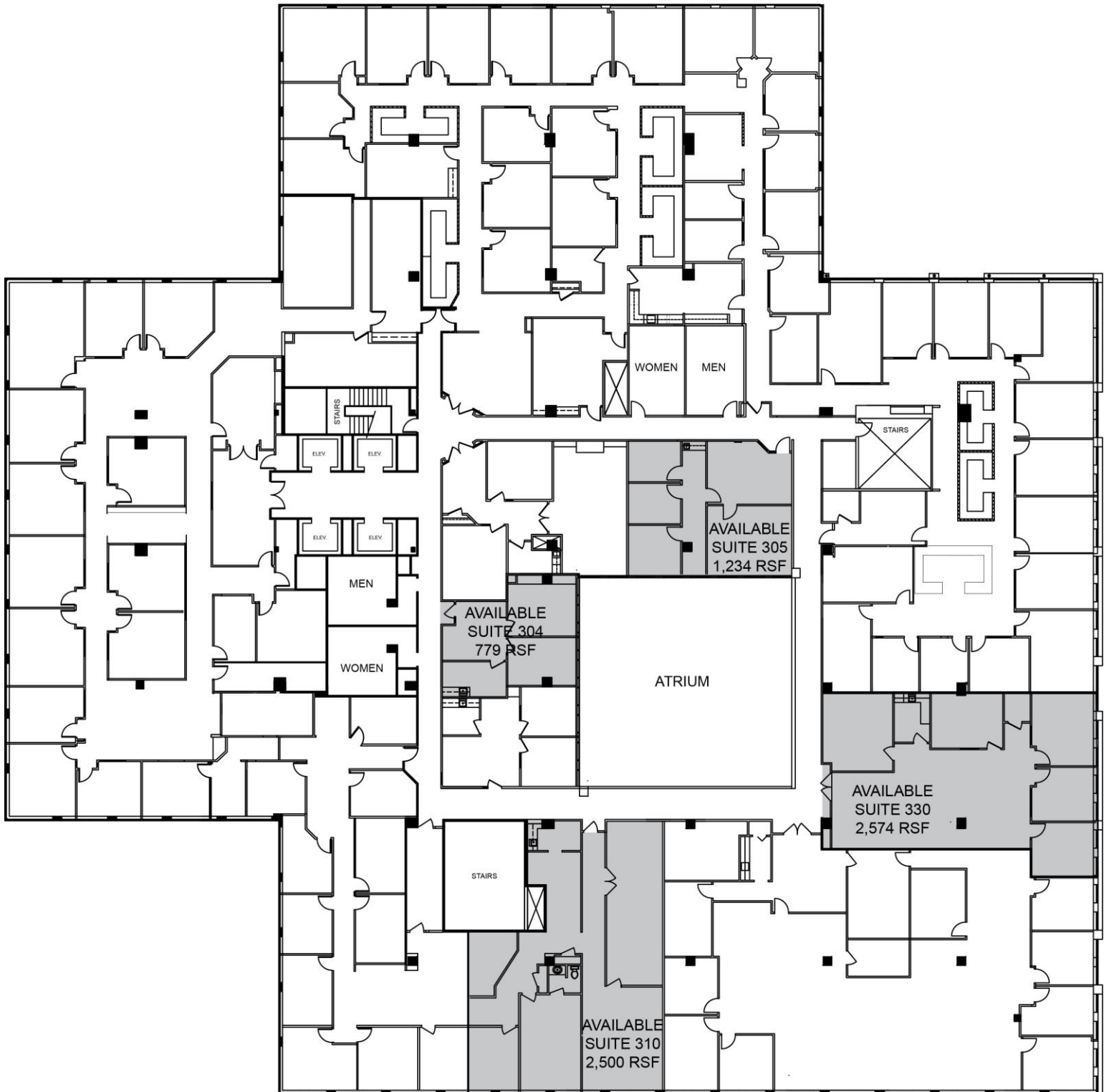
For more information, please contact:

**ERICA DUNLAP**  
(248) 359 3808  
edunlap@signatureassociates.com

**ANGELA THOMAS**  
(248) 359 3838  
athomas@signatureassociates.com

**JOHN GORDY**  
(248) 948 4181  
jgordy@signatureassociates.com

Third Floor Plan



For more information, please contact:

**ERICA DUNLAP**  
(248) 359 3808  
edunlap@signatureassociates.com

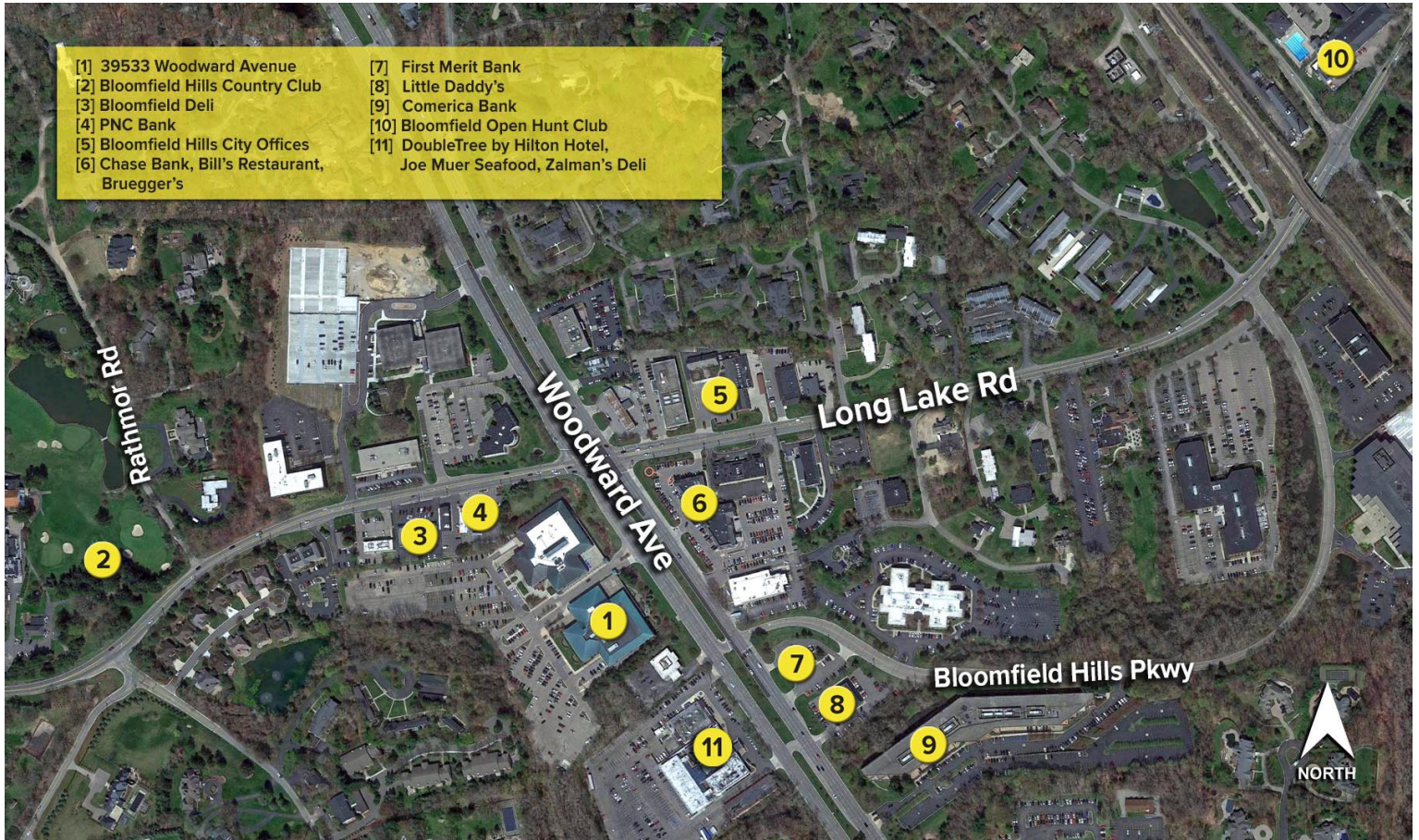
**ANGELA THOMAS**  
(248) 359 3838  
athomas@signatureassociates.com

**JOHN GORDY**  
(248) 948 4181  
jgordy@signatureassociates.com

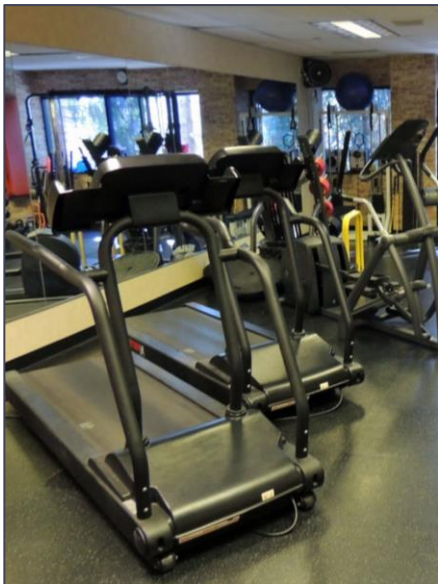
# 39533 Woodward Ave. – Bloomfield Hills, Michigan

## Office For Lease

779 – 16,664  
Square Feet  
AVAILABLE



## BE A PART OF THIS PREMIER FULL-SERVICE OFFICE FACILITY



For more information, please contact:

**ERICA DUNLAP**  
(248) 359 3808  
edunlap@signatureassociates.com

**ANGELA THOMAS**  
(248) 359 3838  
athomas@signatureassociates.com

**JOHN GORDY**  
(248) 948 4181  
jgordy@signatureassociates.com