

FOR LEASE



1050 CORPORATE OFFICE DRIVE MILFORD, MI 48381

PROPERTY HIGHLIGHTS:

- One-story 20,588 square foot office building located within Milford Corporate Office Park
- From 2,000 to 20,588 square feet available
- Office and medical uses
- Attractive building design featuring brick exterior and abundant windows
- Updated interior with functional layout
- Building signage and Milford Road monument signage
- 5/1000 SF parking
- Dedicated generator
- Close proximity to downtown Milford
- Two (2) miles from I-96

The information provided herein along with any attachment(s) was obtained from sources believed to be reliable, however, Friedman Real Estate makes no guarantees, warranties, or representations as to the completeness or accuracy of such information and legal counsel is advised. All information provided is subject to verification and no liability for reliance on such information or errors or omissions is assumed. The presentation of this property is submitted subject to errors, omissions, change of price or conditions, prior sale or lease, or withdrawal without notice. Copyright © 2021 Friedman Real Estate. All rights reserved.

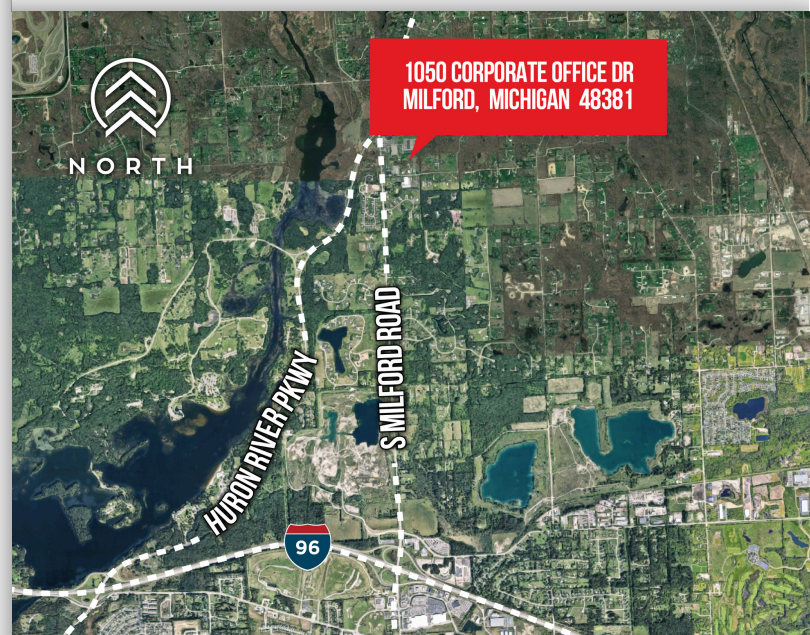
FOR MORE INFORMATION PLEASE CONTACT:



TODD HAWLEY
todd.hawley@freg.com

248.324.2000

eCODE 38



1050 CORPORATE OFFICE DRIVE PROPERTY **PHOTOS**

