

12675 ARNOLD AVENUE
REDFORD, MICHIGAN

INDUSTRIAL FOR SALE
4,498 Square Feet Available

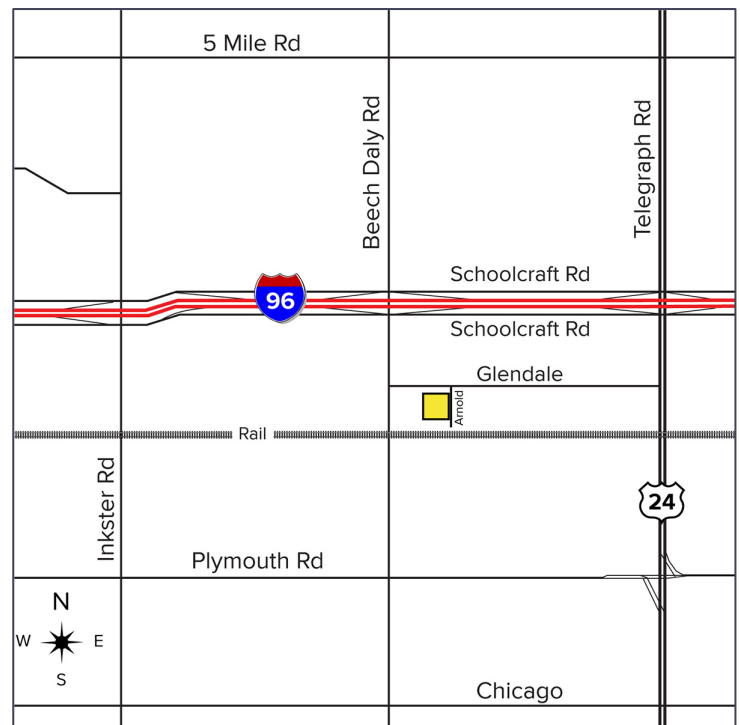


**SIGNATURE
ASSOCIATES**
KNOW SIGNATURE | KNOW RESULTS



PROPERTY FEATURES

- 4,498 square feet available
- 1,800 square feet of office
- 14' clear height
- (1) 10x12 grade level door
- Zoned M-2
- Excellent little industrial building located in the General Industrial zoning district
- Sale Price: \$290,000



For more information, please contact:

CHRISTOPHER CALVANO
(248) 359 0610
ccalvano@signatureassociates.com

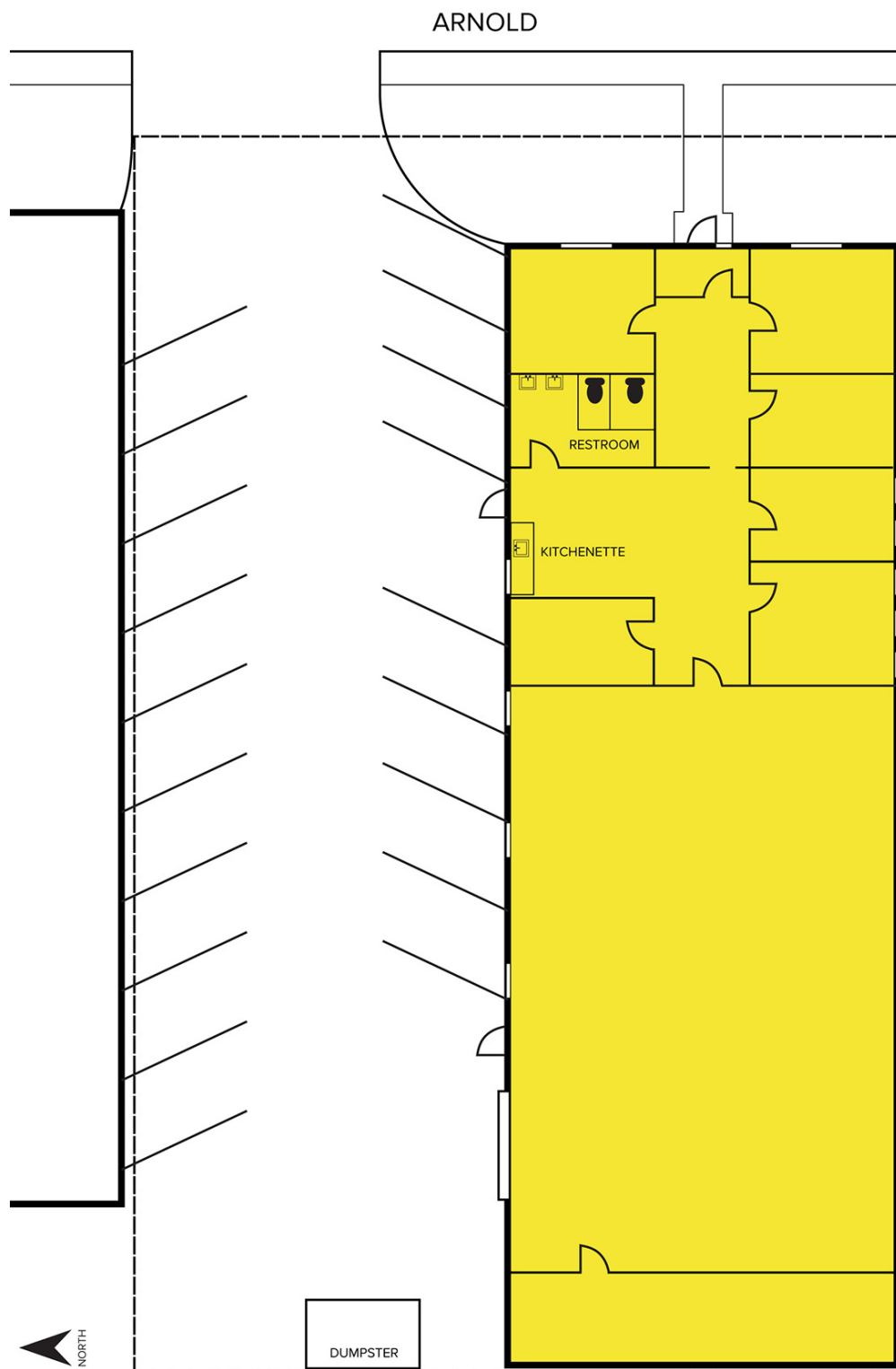
SIGNATURE ASSOCIATES
One Towne Square, Suite 1200
Southfield, MI 48076
www.signatureassociates.com

12675 Arnold Avenue – Redford, Michigan

Industrial For Sale

4,498
Square Feet
AVAILABLE

Site Plan



For more information, please contact:

CHRISTOPHER CALVANO

(248) 359 0610

ccalvano@signatureassociates.com

SIGNATURE ASSOCIATES

One Towne Square, Suite 1200

Southfield, MI 48076

www.signatureassociates.com

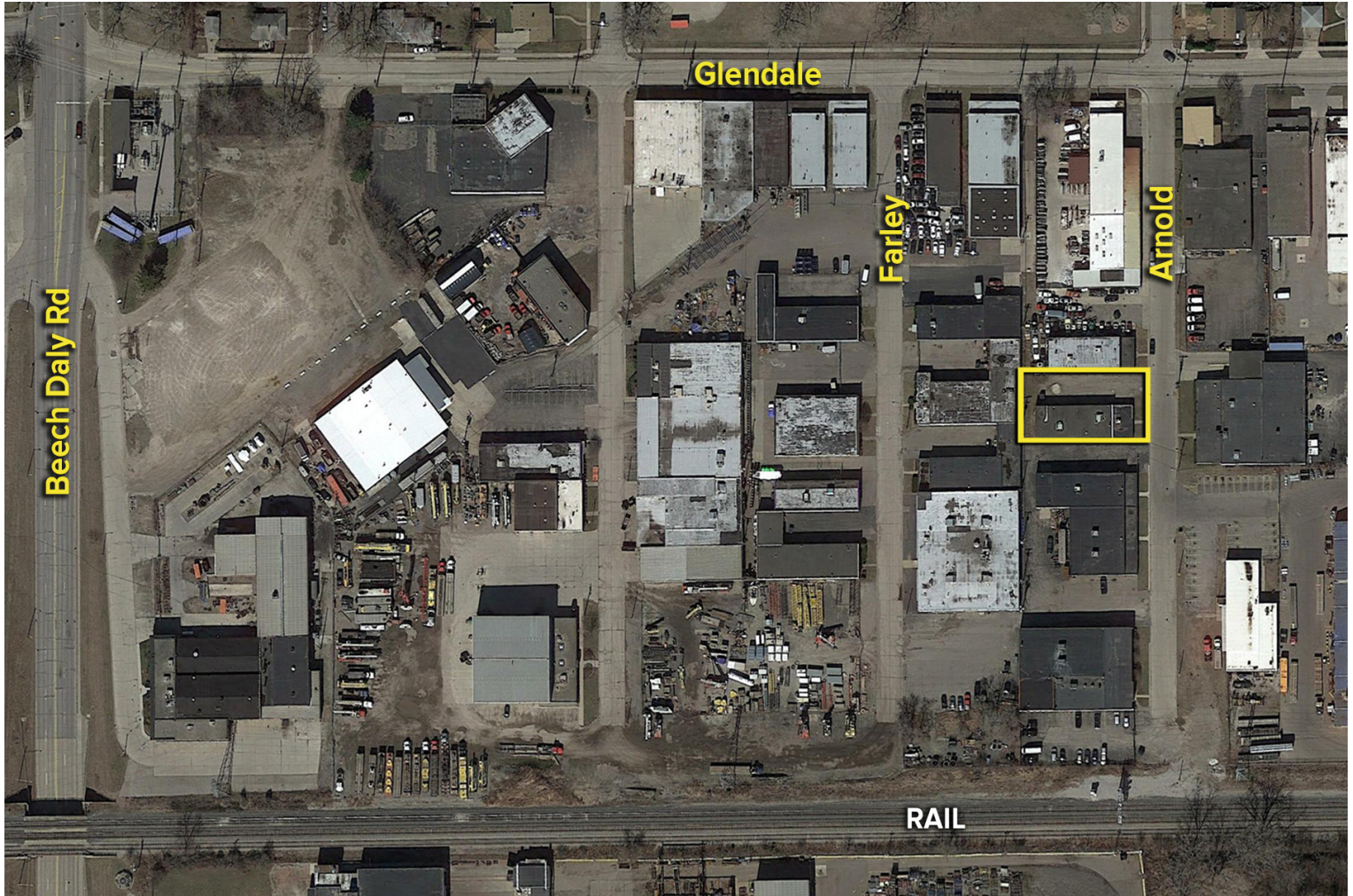
Information is subject to verification and no liability for errors or omissions is assumed. Price is subject to change and listing withdrawal.

12675 Arnold Avenue – Redford, Michigan

Industrial For Sale

4,498
Square Feet
AVAILABLE

Aerial



For more information, please contact:

CHRISTOPHER CALVANO
(248) 359 0610
ccalvano@signatureassociates.com

SIGNATURE ASSOCIATES
One Towne Square, Suite 1200
Southfield, MI 48076
www.signatureassociates.com

Information is subject to verification and no liability for errors or omissions is assumed. Price is subject to change and listing withdrawal.