

2029 S. ELMS ROAD  
SWARTZ CREEK, MICHIGAN

OFFICE FOR SALE  
17,530 Square Feet Available



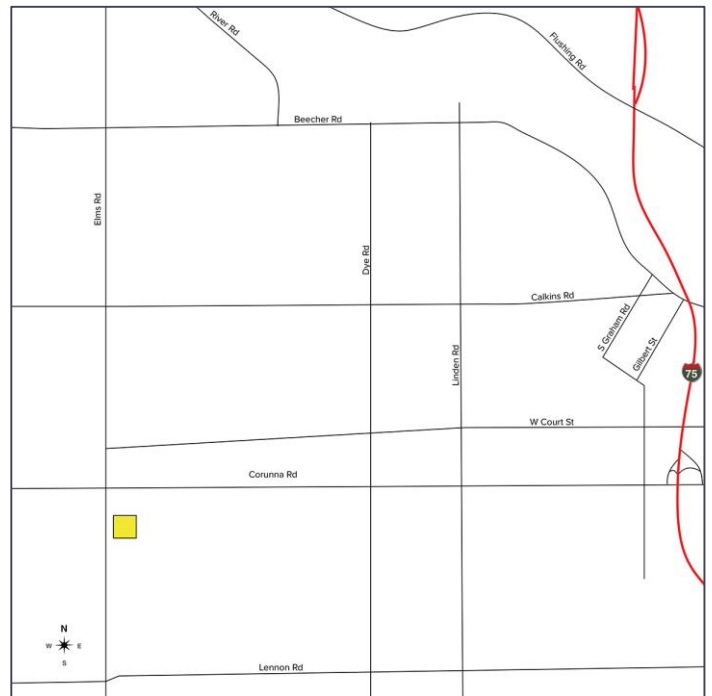
**SIGNATURE  
ASSOCIATES**  
KNOW SIGNATURE | KNOW RESULTS

**ELMS OFFICE PARK, BUILDING A**



## PROPERTY FEATURES

- 17,530 square feet available
- Available immediately
- Zoned C-2
- Good location
- 95% leased
- Unofficial monthly rental income: \$8,000
- Sale Price \$325,000 (\$18.54/sf)



For more information, please contact:

**GRANT BRUCE**  
(248) 948 4188  
gbruce@signatureassociates.com

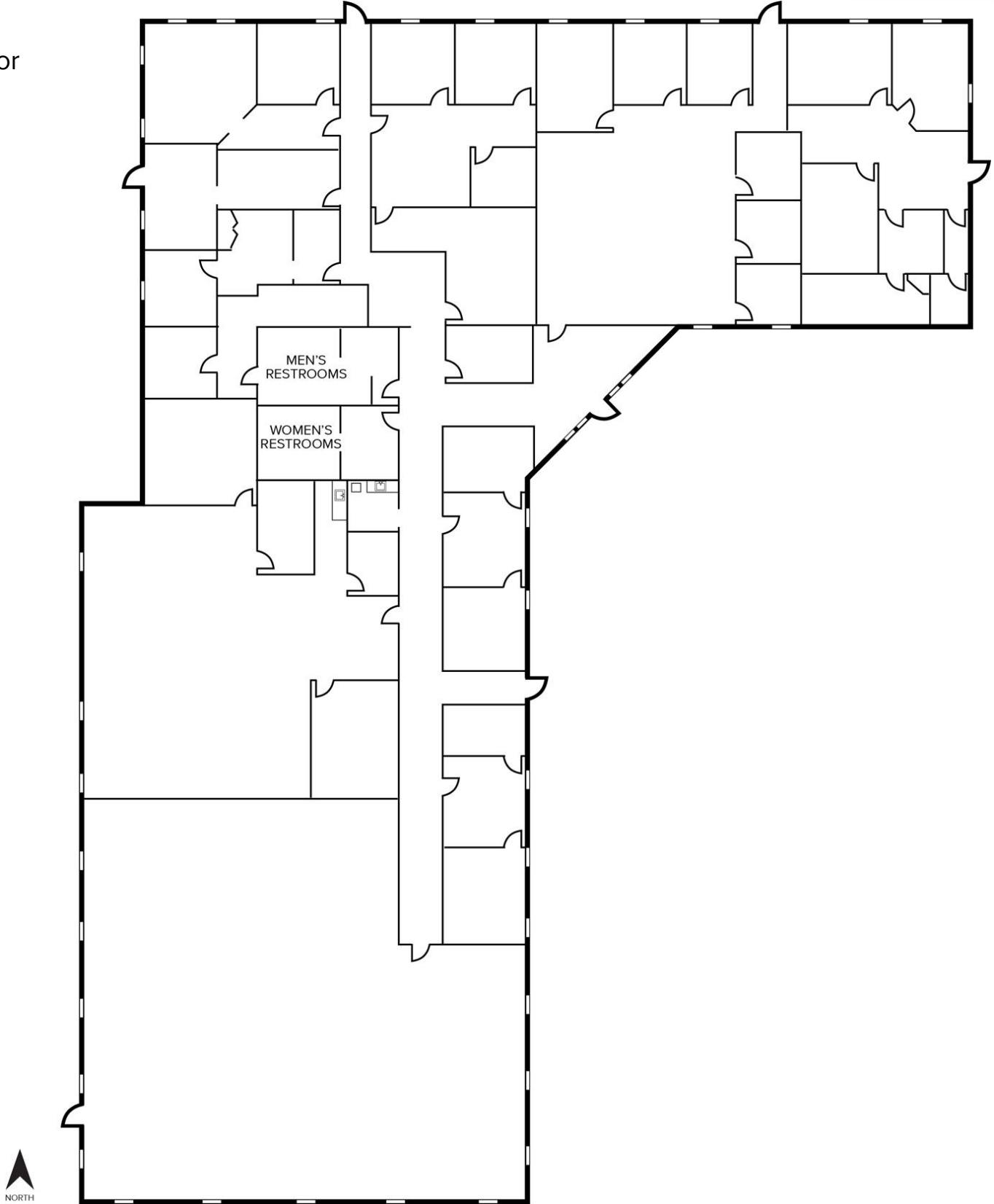
**SIGNATURE ASSOCIATES**  
One Towne Square, Suite 1200  
Southfield, MI 48076  
www.signatureassociates.com

# 2029 S. Elms Road – Swartz Creek, Michigan

Office For Sale

17,530  
Square Feet  
AVAILABLE

1st Floor



For more information, please contact:

**GRANT BRUCE**  
(248) 948 4188  
gbruce@signatureassociates.com

**SIGNATURE ASSOCIATES**  
One Towne Square, Suite 1200  
Southfield, MI 48076  
www.signatureassociates.com