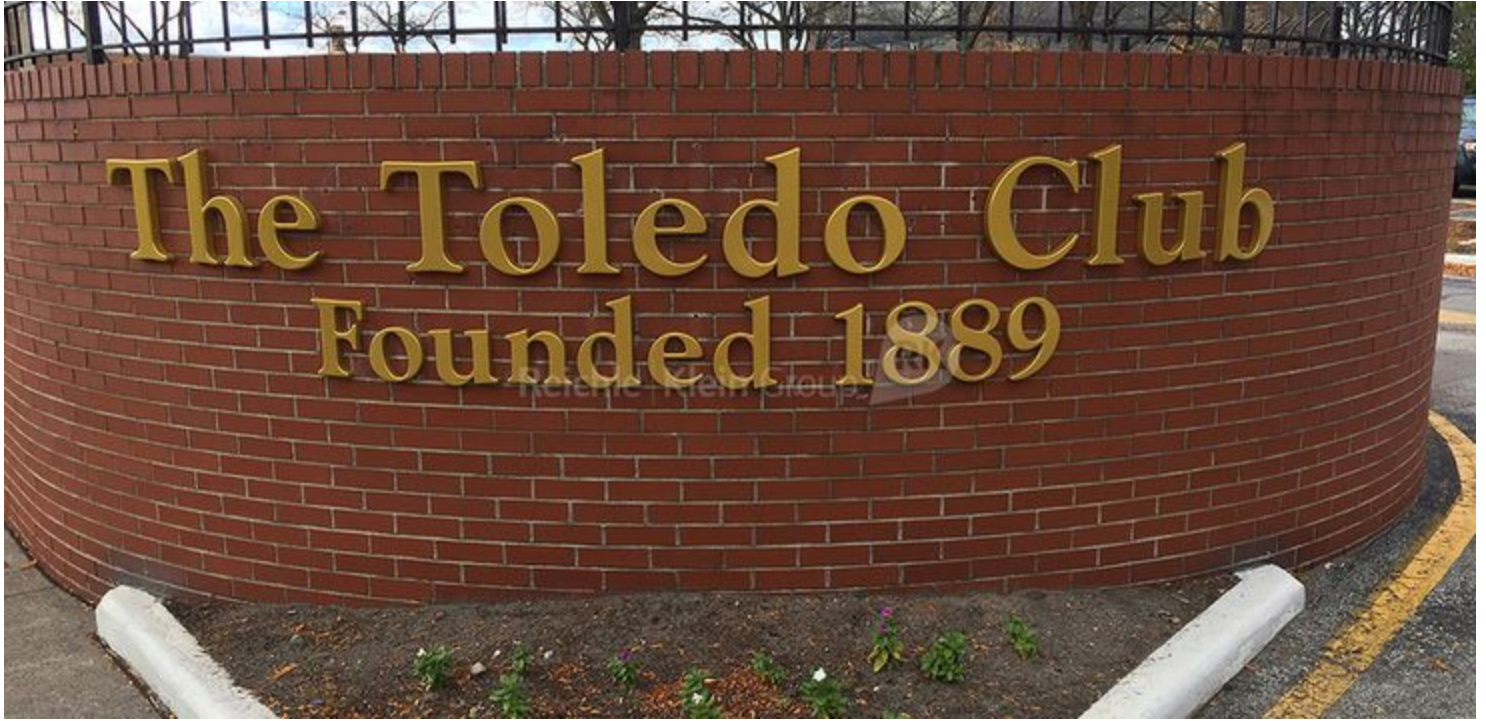


# 235 14th Street

235 14th Street | Toledo, OH 43604



## OFFERING SUMMARY

Available Space:	144 SF
Building Size:	112,839 SF
Lease Rate:	\$20.00 SF/yr (Plus Janitorial)
Lot Size:	2.7 Acres
Year Built:	1927
Building Class:	A
Renovated:	2019
Market:	Toledo
Submarket:	CBD
Total Parking:	1000

## PROPERTY OVERVIEW

- Individual rooms available, some with private restrooms, from 144 SF
- Membership required - includes various cost levels of athletic (pool, track, fitness facility, squash, sauna/steam, Jacuzzi, social and dining activities)
- See the Toledo Club website for full membership costs and benefits
- Fenced, free parking and free WiFi
- Join Accessible Renovations, Tom Baird, CPS Neurological Network, et al.

## LOCATION OVERVIEW

Located in the Central Business District of Toledo.

For More Information Contact:

**Peter Shawaker, CCIM, SIOR**  
419.794.3969  
pshawaker@rkgcommercial.com  
[www.rkgcommercial.com](http://www.rkgcommercial.com)

# 235 14th Street



RK

235 14th Street | Toledo, OH 43604

## LEASE DETAILS

Available SF	144 SF
Lease Rate	\$20.00 SF/yr + Janitorial

## BUILDING INFORMATION

Building Size	112,839 SF
Number Of Floors	5
Year Built	1927
Renovated	2019
Tenancy	Multiple
Construction Status	Existing
LEED Certification	No

## PROPERTY DETAILS

Primary Property Type	Office
Zoning	10-CR Regional Commercial
Acreage	2.7 Acres
Parcel / APN Numbers	15-50384
# Parking Spaces	1000

## LOCATION INFORMATION

Building Name	235 14th Street
City, State & Zip	Toledo, OH 43604
County	Lucas
Submarket	CBD
Cross Streets	Madison Avenue

## UTILITIES

Internet Provider	Free Wifi
Fuel Provider	Provided
Water Provider	Provided

For More Information Contact:

**Peter Shawaker, CCIM, SIOR**

419.794.3969

pshawaker@rkgcommercial.com

[www.rkgcommercial.com](http://www.rkgcommercial.com)

Office Building For Lease

# 235 14th Street

RK

235 14th Street | Toledo, OH 43604



## LEASE INFORMATION

Lease Type:	Plus Janitorial	Lease Term:	Negotiable
Total Space:	144 SF	Lease Rate:	\$20.00 SF/yr

## AVAILABLE SPACES

SUITE	TENANT	SIZE (SF)	LEASE RATE	DESCRIPTION
Suite 519	Available	144 SF	\$20.00 SF/yr	No exterior windows (9' x 16')

For More Information Contact:

**Peter Shawaker, CCIM, SIOR**  
419.794.3969  
pshawaker@rkgcommercial.com  
[www.rkgcommercial.com](http://www.rkgcommercial.com)

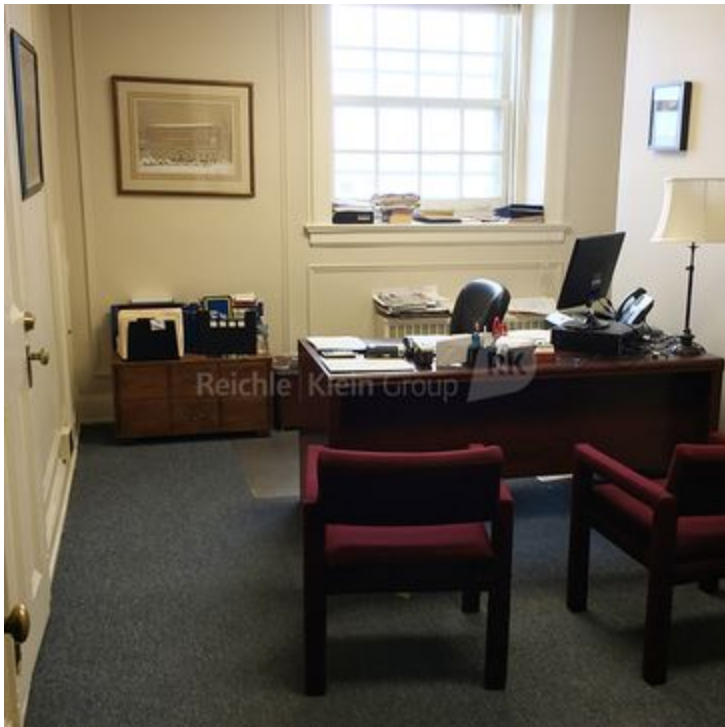
**Reichle | Klein Group**   
Commercial Property Brokers, Managers & Investment Advisors

Office Building For Lease

# 235 14th Street

RK

235 14th Street | Toledo, OH 43604



For More Information Contact:

**Peter Shawaker, CCIM, SIOR**

419.794.3969

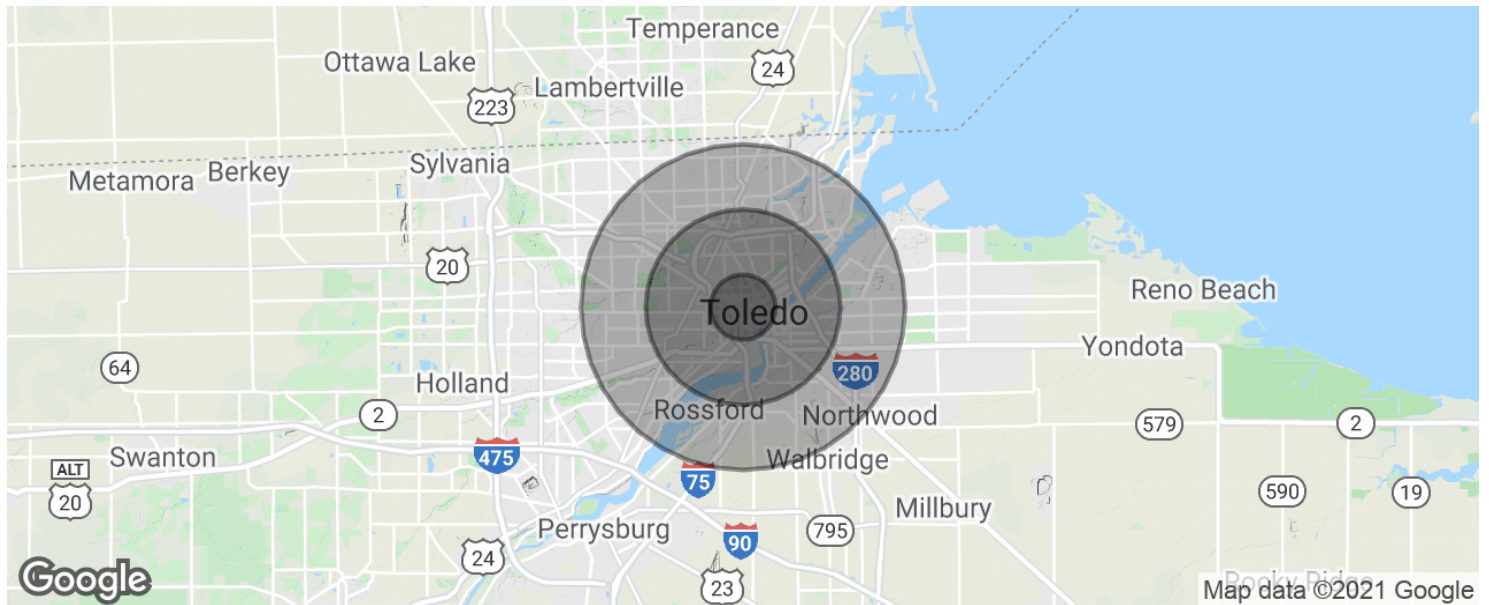
[pshawaker@rkgcommercial.com](mailto:pshawaker@rkgcommercial.com)

[www.rkgcommercial.com](http://www.rkgcommercial.com)

Reichle | Klein Group   
Commercial Property Brokers, Managers & Investment Advisors

# 235 14th Street

235 14th Street | Toledo, OH 43604



## POPULATION

	1 MILE	3 MILES	5 MILES
Total population	11,992	113,700	244,584
Median age	31.3	32.2	33.2
Median age (Male)	31.1	29.7	31.5
Median age (Female)	32.9	34.2	34.8

## HOUSEHOLDS & INCOME

	1 MILE	3 MILES	5 MILES
Total households	5,571	44,793	96,423
# of persons per HH	2.2	2.5	2.5
Average HH income	\$23,623	\$31,348	\$41,151
Average house value	\$129,559	\$86,332	\$105,963

\* Demographic data derived from 2010 US Census

For More Information Contact:

**Peter Shawaker, CCIM, SIOR**

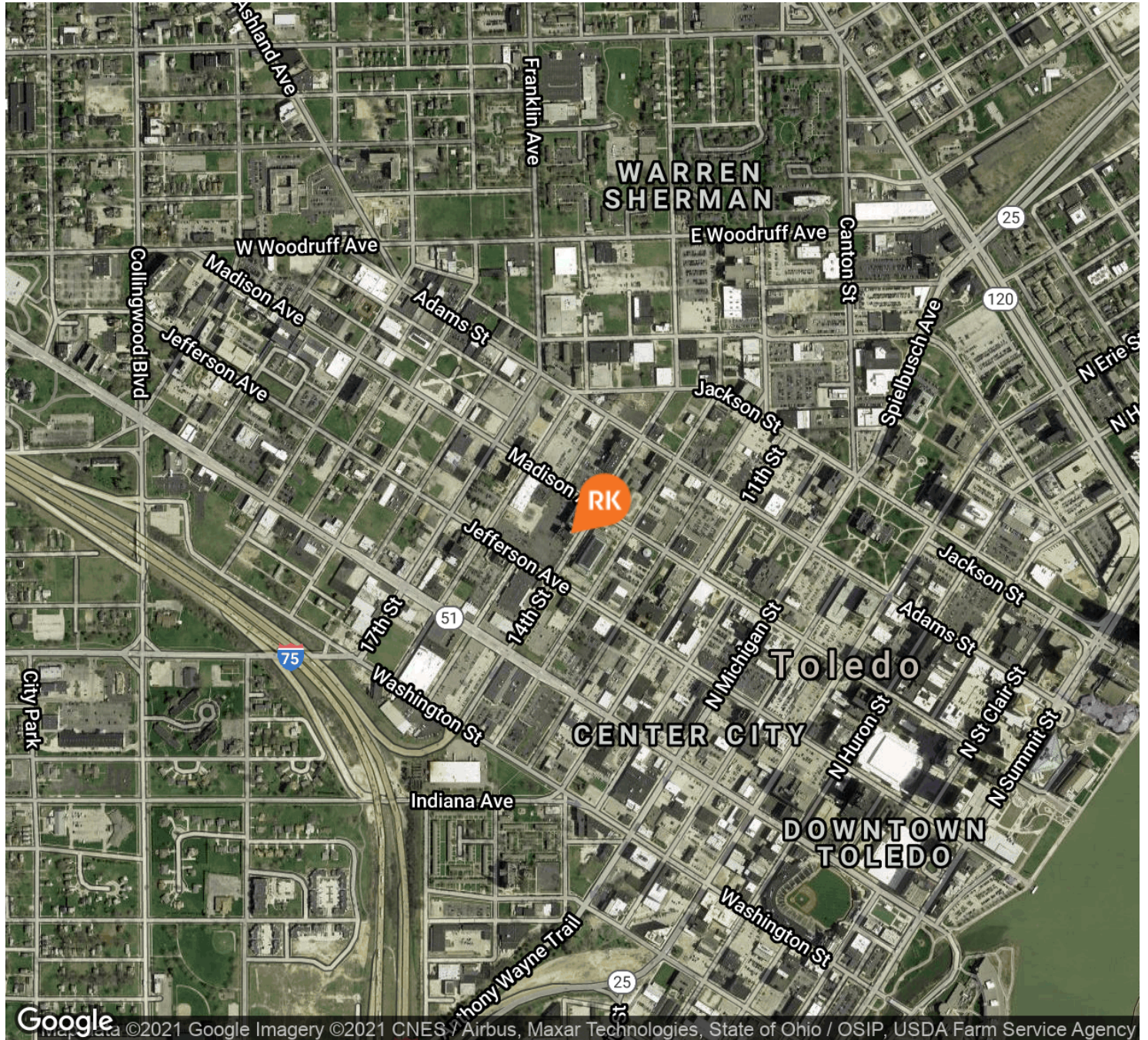
419.794.3969

pshawaker@rkgcommercial.com

[www.rkgcommercial.com](http://www.rkgcommercial.com)

# 235 14th Street

235 14th Street | Toledo, OH 43604



Reichle Klein Group - Commercial Property Brokers, Managers & Investment Advisors:



**Peter Shawaker, CCIM, SIOR**

419.794.3969 T

419.794.6086 F

pshawaker@rkgcommercial.com

Toledo, OH 43604

[www.rkgcommercial.com](http://www.rkgcommercial.com)

This information has been obtained from sources believed reliable. We have not verified it and make no guarantee, warranty or representation about it. Any projections, opinions, assumptions or estimates used are for example only and do not represent the current or future performance of the property. You and your advisors should conduct a careful, independent investigation of the property to determine to your satisfaction the suitability of the property for your needs.