

# Manhattan Beach Studios

1600 Rosecrans Ave  
El Segundo, CA 90245

## Space Profile:

<b>Premises</b>	Stage: 18,000 SF <u>Production Office: 16,574 SF</u> <b>Total Available: 34,574 SF</b>
<b>Rental Rate</b>	Negotiable
<b>Availability</b>	Immediate
<b>Term</b>	Short & Long Term Available
<b>Lease Expiration</b>	August 31, 2028
<b>Parking</b>	3.5/1000



## Features:

- Turn-key entertainment facility – campus
- Short and long term production support options available
- Includes creative office, control rooms, HVAC, Green Screen, Edit Bays, Sound Rooms, etc

[Stage 19 Virtual Tour Link](#)



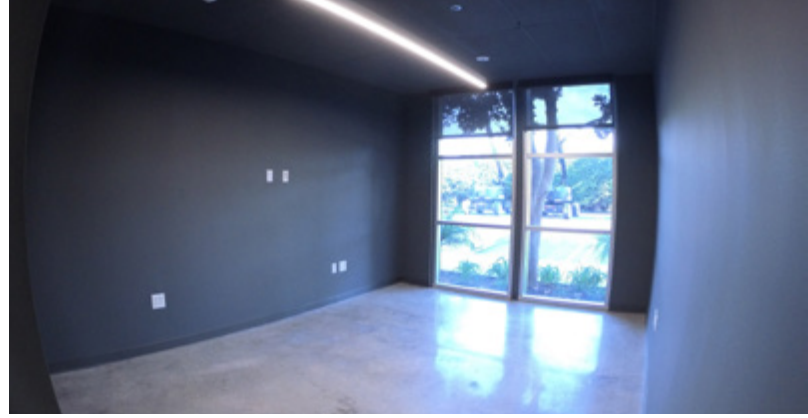
## Contact:

**Ray Howden**  
818.590.2568  
rhowden@cresa.com  
BRE# 01281705

**Greg Lovett**  
213.675.2222  
glovett@cresa.com  
BRE# 01205970

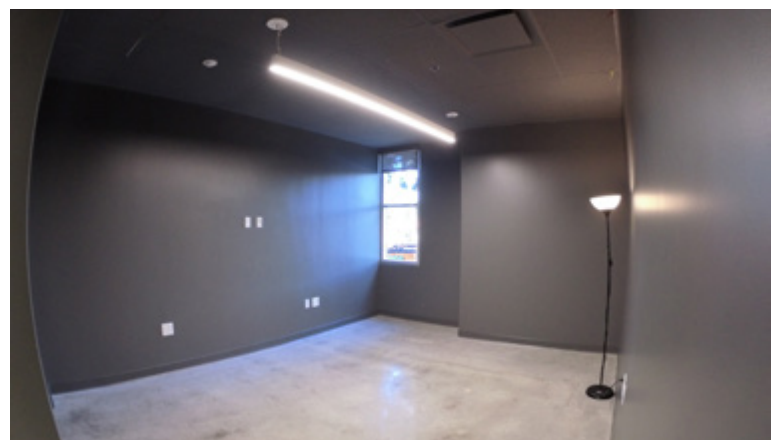
**Davorin Kristo**  
314.650.9667  
dkristo@cresa.com  
BRE# 02065933

**Steven Seinfeld**  
310.210.5570  
sseinfeld@cresa.com  
BRE# 00888693



## Manhattan Beach Studios

1600 Rosecrans Ave, El Segundo

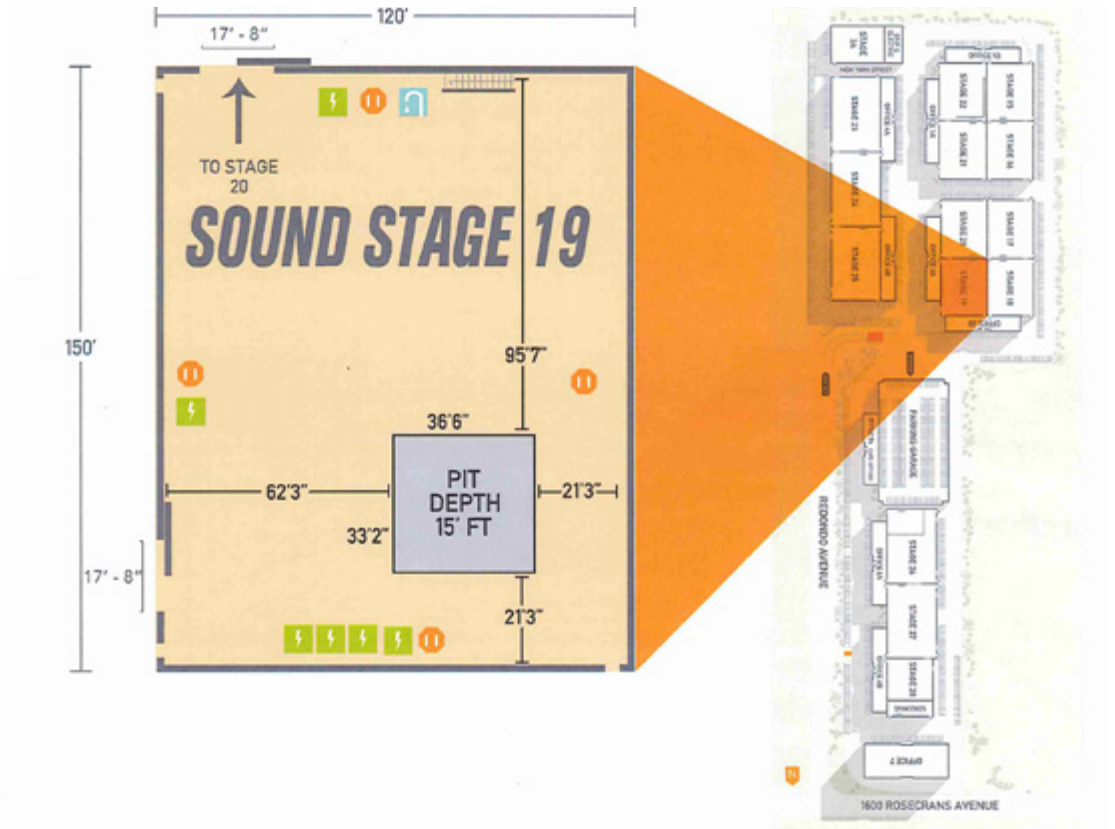


# Manhattan Beach Studios

## Stage 19 Floorplan

Clear Height: 35'

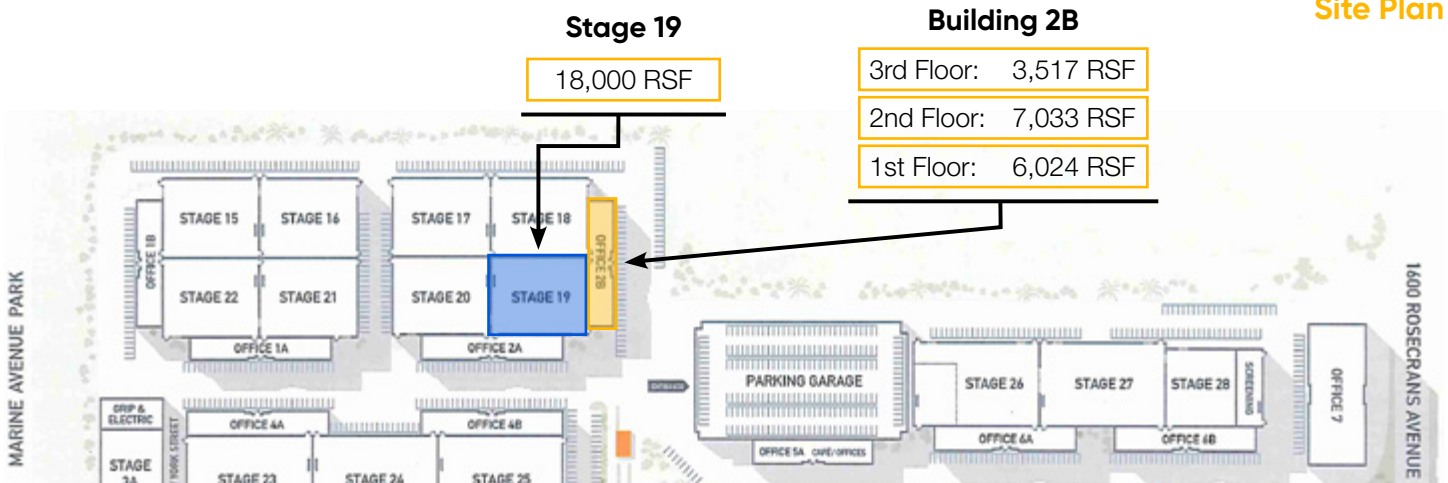
-  sink
-  1,200 amps
-  3,600 amps
-  natural gas, water, phones, service outlets



VIEW THE VIRTUAL TOUR 

STAGE	SQ. FT.	DIMENSIONS	HEIGHT FT	FLOOR	DOOR(WXHI)	POWER	AC/HEAT
19	18,000	150' X 120'	35'	WOOD OVER CONCRETE	17' 8" X 16'	7,200 AMPS	150 TONS

### Site Plan

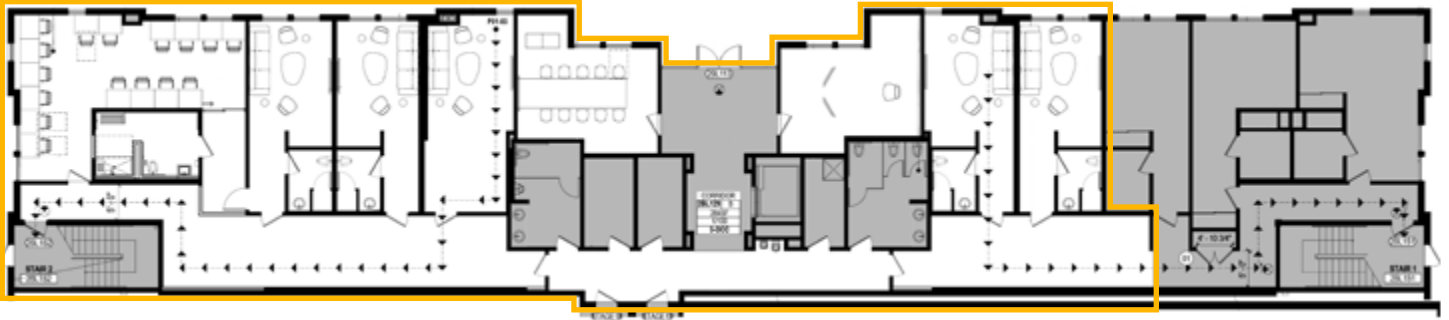


# Manhattan Beach Studios

## Building 2B Floorplans

### Building 2B - 1st Floorplan

Production/Office - 6,024 RSF



### Building 2B - 2nd Floorplan

Production/Office - 7,033 RSF



### Building 2B - 3rd Floorplan

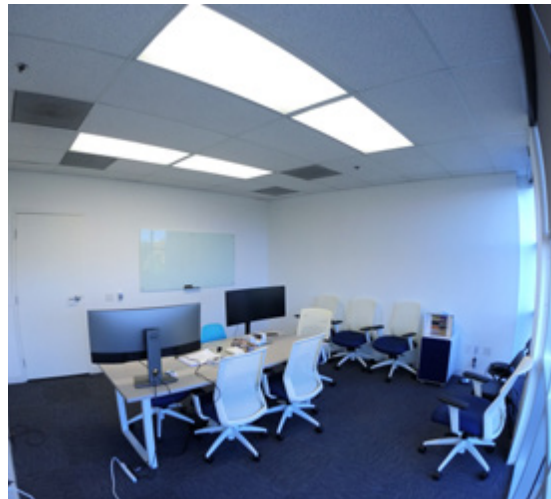
Production/Office - 3,517 RSF





## Manhattan Beach Studios

1600 Rosecrans Ave, El Segundo



### Contact:

**Ray Howden**

818.590.2568  
rhowden@cresa.com  
BRE# 01281705

**Greg Lovett**

213.675.2222  
glovett@cresa.com  
BRE# 01205970

**Steven Seinfeld**

310.210.5570  
sseinfeld@cresa.com  
BRE# 00888693

**Davorin Kristo**

314.650.9667  
dkristo@cresa.com  
BRE# 02065933

