

641 LEXINGTON AVENUE

Sublease Available



Space Profile

Premises	Partial 18th Floor
Size	3,476 RSF
Rental Rate	Upon Request
Availability	Immediate
Term	February 28, 2022

Features

- High Floor
- Corner Unit with Great Views
- Mix of Open Area and Offices
- Strong Sublessor
- Access to Major Transit
- Lots of Natural Light



VIEW THE **360°** VIRTUAL TOUR



For More Information, Please Contact

Nicholas Markel
212.687.4501
NMarkel@cresa.com

Gregg Cohen
212.687.4329
GCohen@cresa.com

Even though obtained from sources deemed reliable, no warranty or representation, express or implied, is made as to the accuracy of the information herein, and it is subject to errors, omissions, change of price, rental or other conditions, withdrawal without notice, and to any special listing conditions imposed by our principals.





641 LEXINGTON AVENUE

Partial 18th Floor | 3,476 RSF



For More Information, Please Contact

Nicholas Markel
212.687.4501
NMarkel@cresa.com

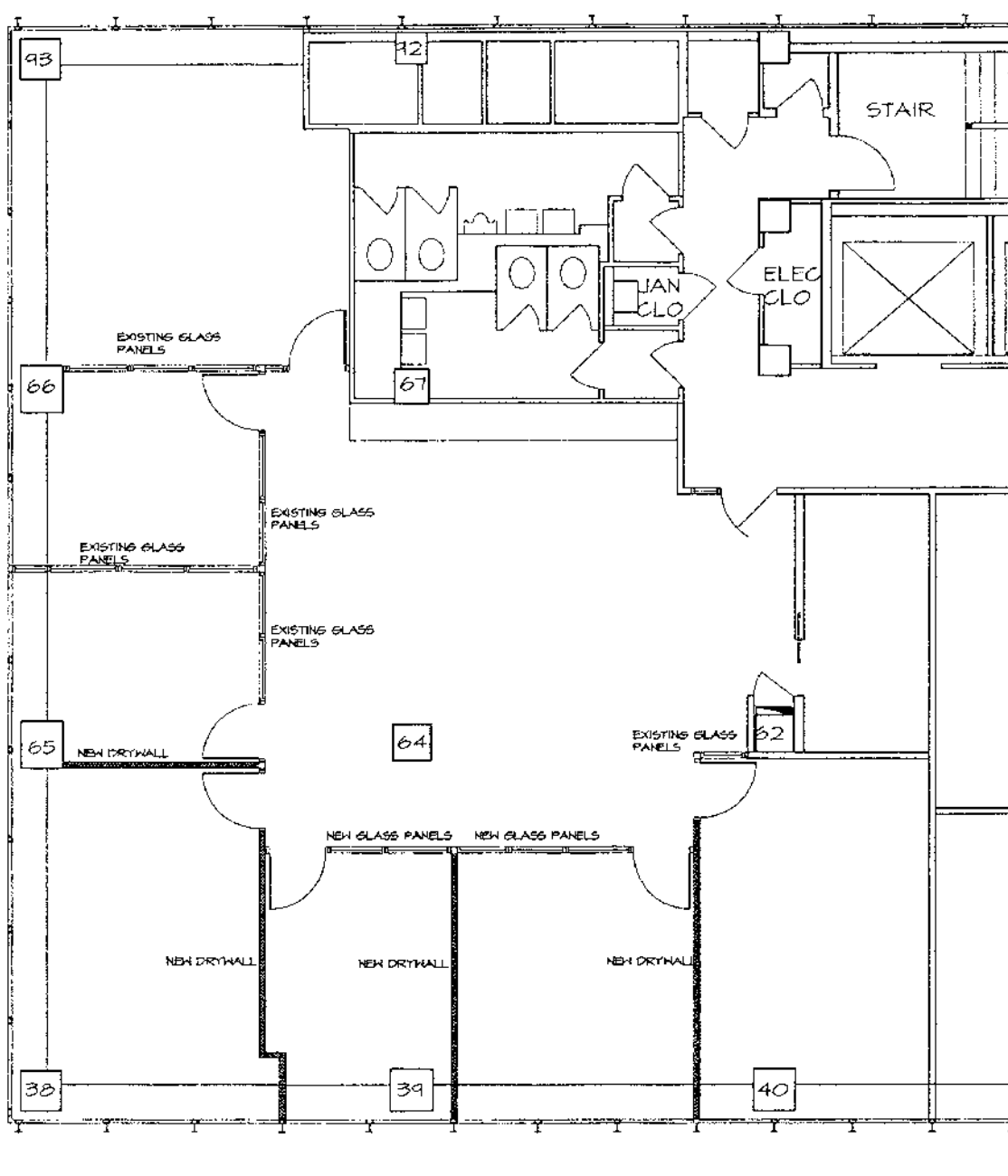
Gregg Cohen
212.687.4329
GCohen@cresa.com

Cresa
1633 Broadway
22nd Floor
New York, NY 10019



641 LEXINGTON AVENUE

Partial 18th Floor | 3,476 RSF



For More Information, Please Contact

Nicholas Markel
212.687.4501
NMarkel@cresa.com

Gregg Cohen
212.687.4329
GCohen@cresa.com

Cresa
1633 Broadway
22nd Floor
New York, NY 10019