

For Sale

Reichle | Klein Group

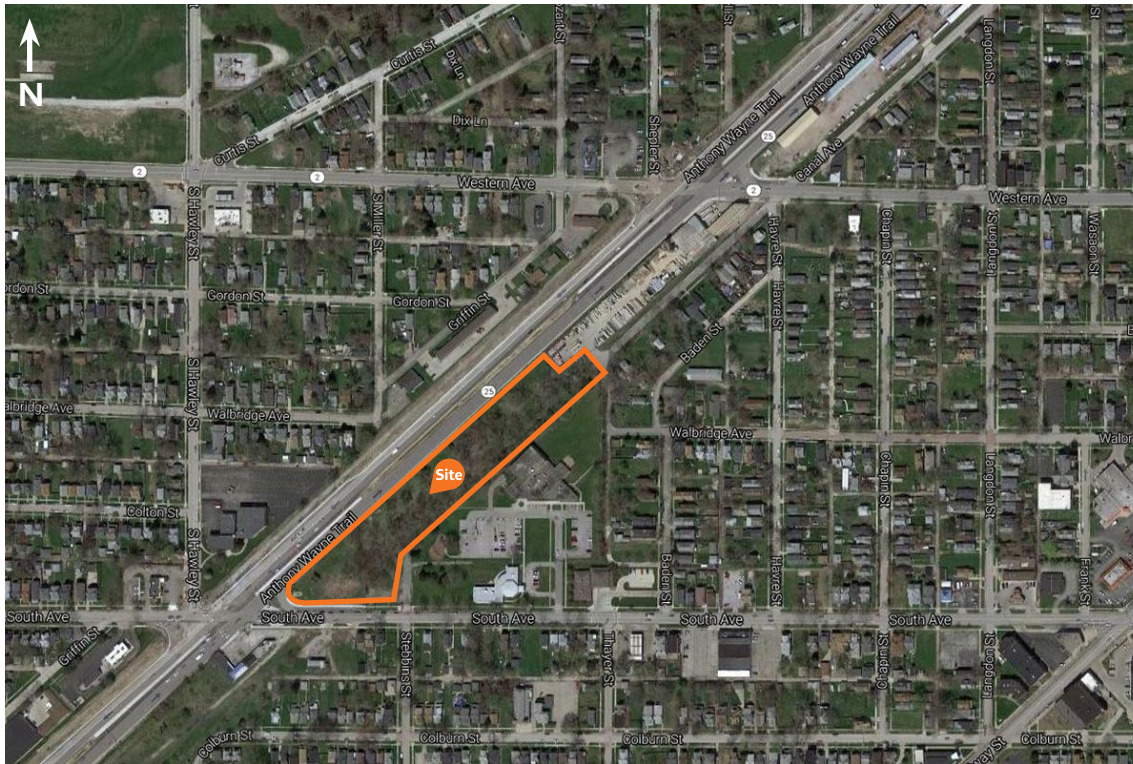


Commercial Property Brokers, Managers & Investment Advisors

1050 South Avenue

At Anthony Wayne Trail (State Route 25) | Toledo, Ohio 43609 | Lucas County

Industrial Land



Sale Price:

\$65,000/Acre

Acreage:

6 Acres±

Zoning:

IL at corner, IG and MX

Features:

- Six acres± of former rail (Norfolk Southern Railway)
- Hard corner
- Gateway to Downtown Toledo
- Approximately 1,100' of frontage on Anthony Wayne Trail (State Route 25) and 350' of frontage on South Avenue

**For more
information
contact:**

Jerry Malek, CCIM, SIOR

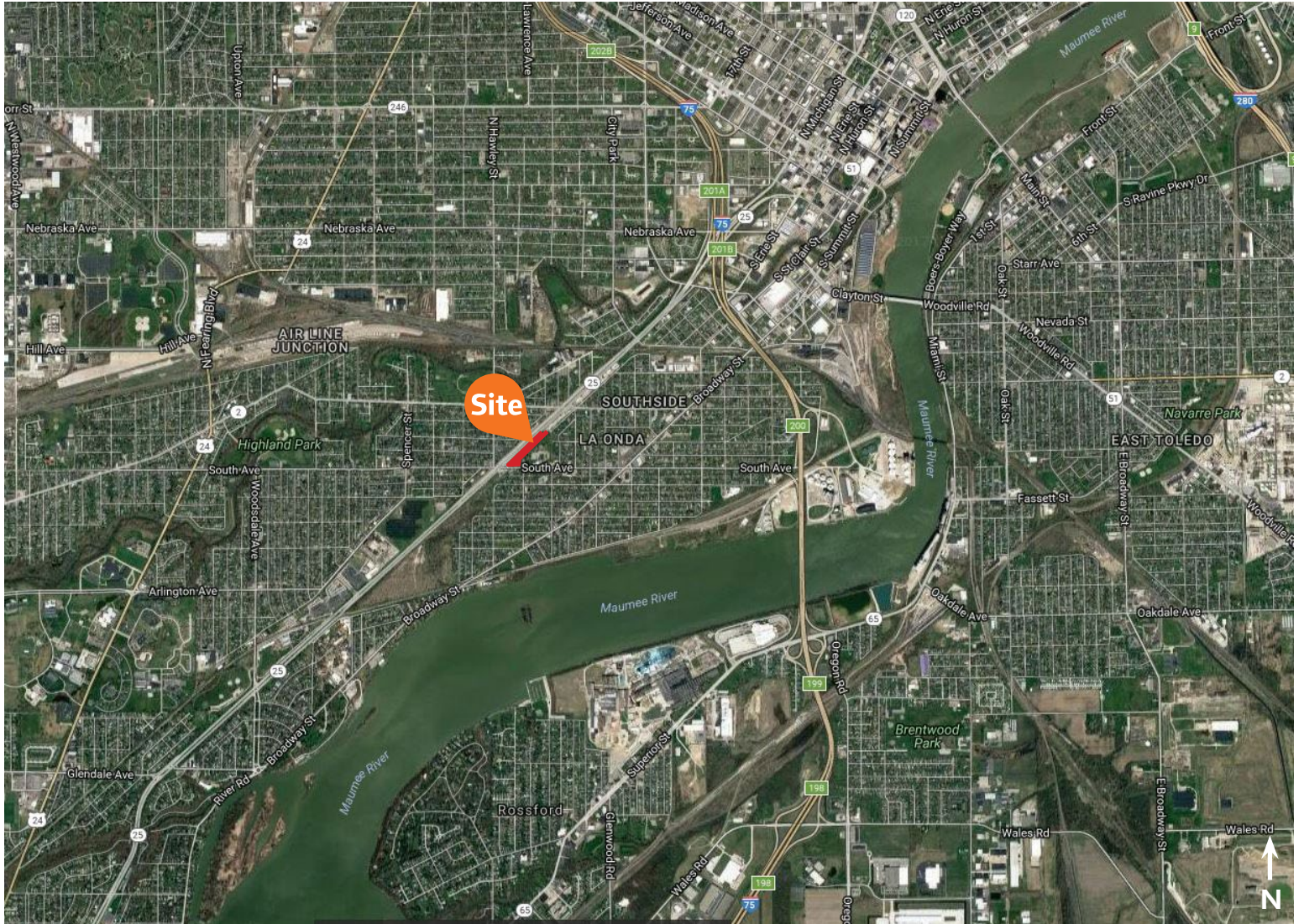
419.794.3964 t

419.794.6073 f

jmalek@rkgcommercial.com

For Sale

1050 South Avenue Toledo, Ohio 43609 | Lucas County



2017 Estimated Demographics	1 mile	3 miles	5 miles	7 minute drive time
Population	12,539	91,559	226,663	176,011
Median Household Income	\$24,542	\$31,729	\$40,915	\$35,717
Median Housing Value	\$79,644	\$93,148	\$100,677	\$93,774
Employees	2,098	66,190	128,552	108,728

Reichle | Klein Group 
 Commercial Property Brokers, Managers & Investment Advisors

One SeaGate | 26th Floor | Toledo, OH 43604 | www.rkgcommercial.com

This information has been obtained from sources believed reliable. We have not verified it and make no guarantee, warranty or representation about it. Any projections, opinions, assumptions or estimates used are for example only and do not represent the current or future performance of the property. You and your advisors should conduct a careful, independent investigation of the property to determine to your satisfaction the suitability of the property for your needs.