

PCT
222 N Pacific Coast Hwy
El Segundo, CA 90245

Sublease
Available

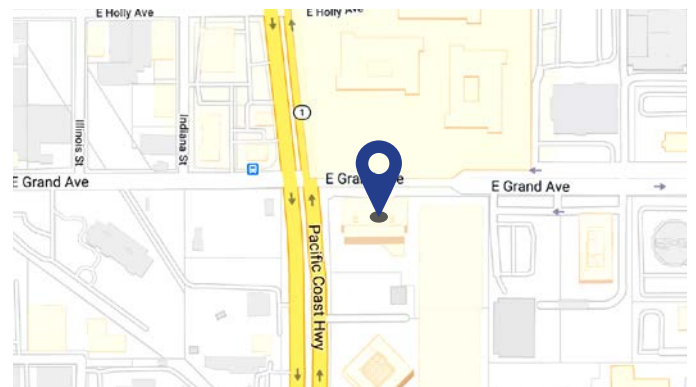
Space Profile

Premises	10,892 SF (Suite 920)
Rental Rate	\$3.25 FSG
Availability	Immediately
Term	Through February 28, 2025 (Shorter term possible)
Parking	4/1,000

Features

- Fully furnished space
- West (ocean) and North (airport) views
- Full restaurant (r.e.d Bar & Grill), ground floor cafe
- Walking distance to an abundance of amenities
- Free shuttle service to downtown El Segundo and LAX
- Basketball courts, ping pong, bike loan stations and full gym
- Weekly farmers market on-site

Map



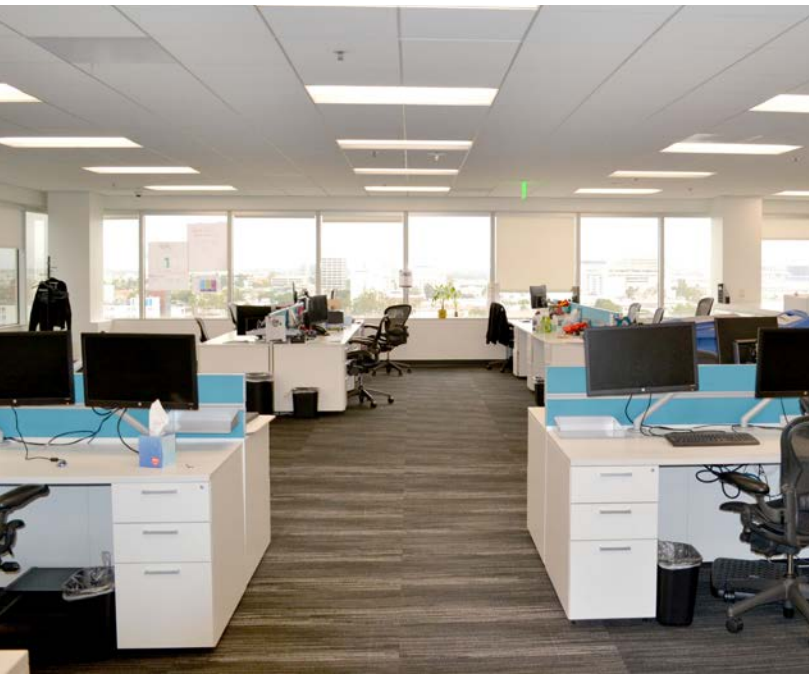
For More Information

Graham Black
818.223.0070 direct
615.969.8241 cell
gblack@cresa.com
BRE# 01955646

Even though obtained from sources deemed reliable, no warranty or representation, express or implied, is made as to the accuracy of the information herein, and it is subject to errors, omissions, change of price, rental or other conditions, withdrawal without notice, and to any special listing conditions imposed by our principals.



11726 San Vicente Boulevard, Suite 500, Los Angeles, CA 90049



Suite 920: 10,892 SF



Space Specs:

- Small reception
- 75 Workstations
- 1 Large conference room
- 2 Medium conference rooms
- 2 Break/kitchen rooms
- 1 Modular walled training/large board room with private entrance/exit
- Mail room/supplies/storage

For More Information

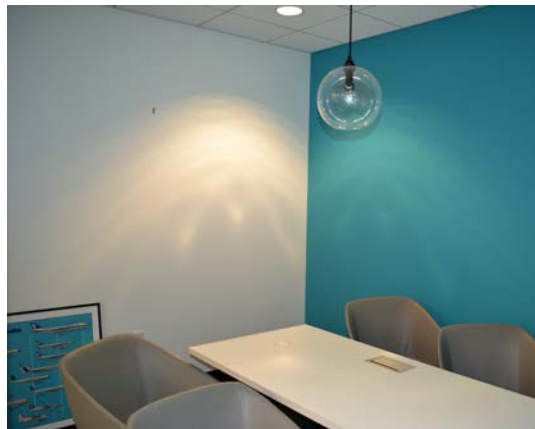
Graham Black
818.223.0070 direct
615.969.8241 cell
gblack@cresa.com
BRE# 01955646





222 N Pacific Coast Hwy
El Segundo, CA 90245

Interior Photos



For More Information

Graham Black
818.223.0070 direct
615.969.8241 cell
gblack@cresa.com
BRE# 01955646