

9100 Wilshire Blvd  
Beverly Hills, CA

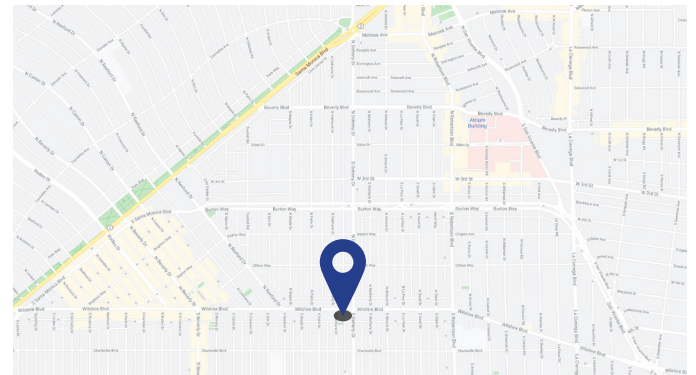
Sublease  
Available

### Space Profile

<b>Premises</b>	2,787 RSF - Suite 530 E
<b>Rental Rate</b>	Negotiable
<b>Availability</b>	Now
<b>Term</b>	TBD
<b>Parking</b>	3/1000 \$270 Reserved \$220 Unreserved

### Features

- Trimana Cafe located on ground floor
- 24-hour on-site security personnel & on-site building management
- Close proximity to retail shops and fine dining in Beverly Hills
- Valet services available for both visitor and monthly VIP tenant parking
- LA Fitness Gym located on ground floor



### For More Information

**Chris Downs**  
213.430.2477  
cdowns@cresa.com  
BRE# 01352626

Even though obtained from sources deemed reliable, no warranty or representation, express or implied, is made as to the accuracy of the information herein, and it is subject to errors, omissions, change of price, rental or other conditions, withdrawal without notice, and to any special listing conditions imposed by our principals.



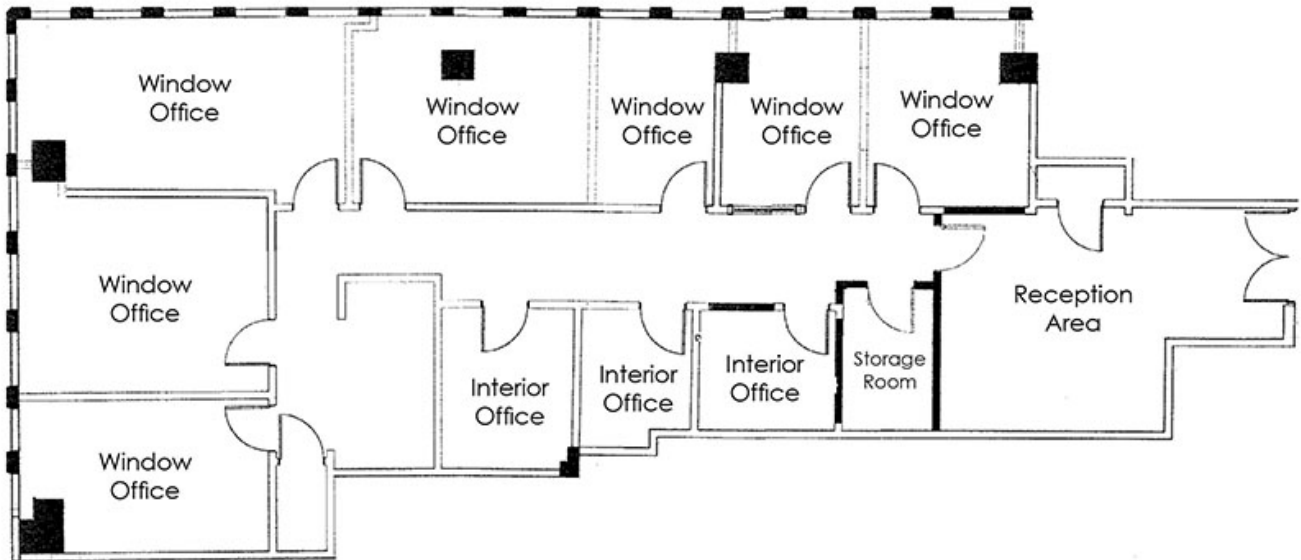
515 South Flower Street, Suite 3000, Los Angeles, CA 90071





**9100 Wilshire Blvd  
Beverly Hills, CA 90212**

**Suite 530 E - 2,787 SF**



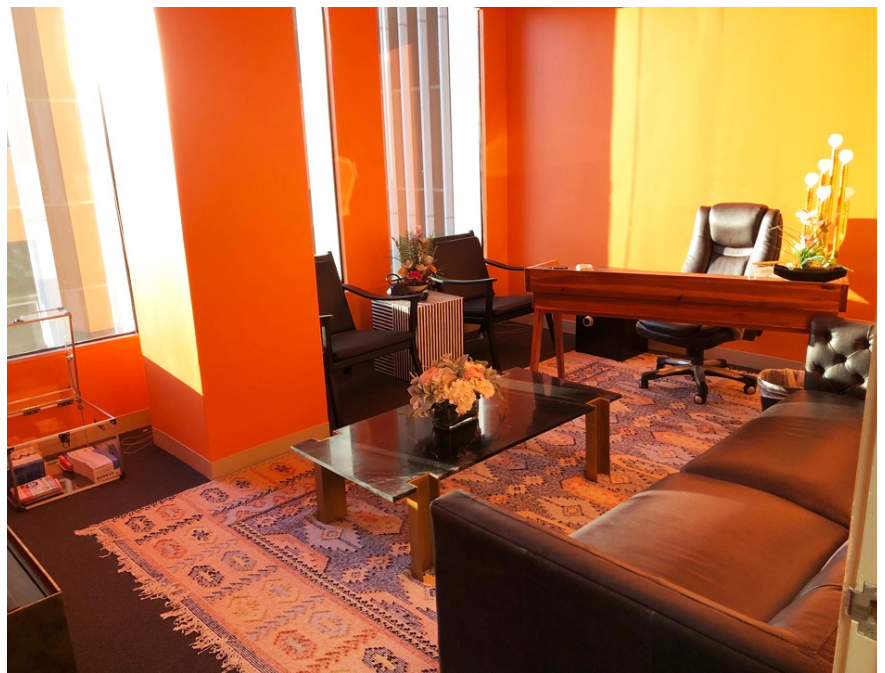
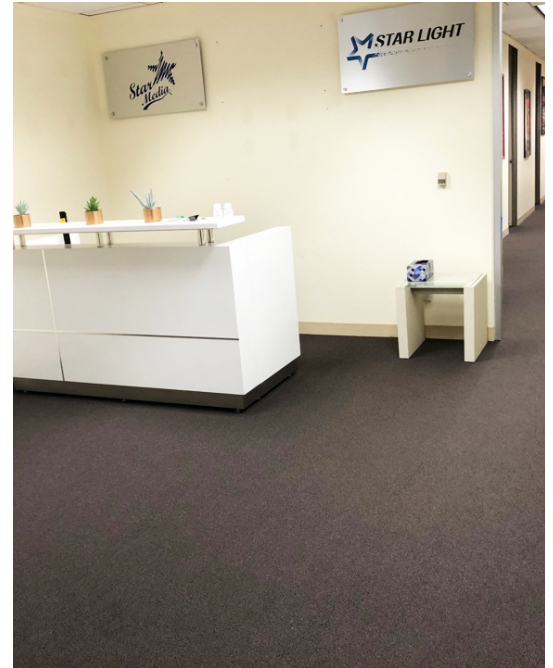
**For More Information**

**Chris Downs**  
213.430.2477  
cdowns@cresa.com  
BRE# 01352626



9100 Wilshire Blvd  
Beverly Hills, CA 90212

### Interior Photos



### For More Information

**Chris Downs**  
213.430.2477  
cdowns@cresa.com  
BRE# 01352626