

FOR LEASE: \$13.65/SF NNN

10835 Dover Street, Suite 800  
Westminster, Colorado 80021

**WALNUT CREEK**  
BUSINESS PARK

## Office / Flex - Available Now

### Property Features

- Available SF** 2,100 SF
- Lease Rate** \$13.65/SF NNN  
Monthly Net Rent: \$2,388.75  
Monthly Gross Rent: \$3,183.25
- CAM** \$4.54/SF (2018 Estimated expenses)
- Comments**
- Open office space and private offices available
  - Landlord provides space planning
  - Tenant improvement allowance available
  - Ample parking

For more information, please contact:

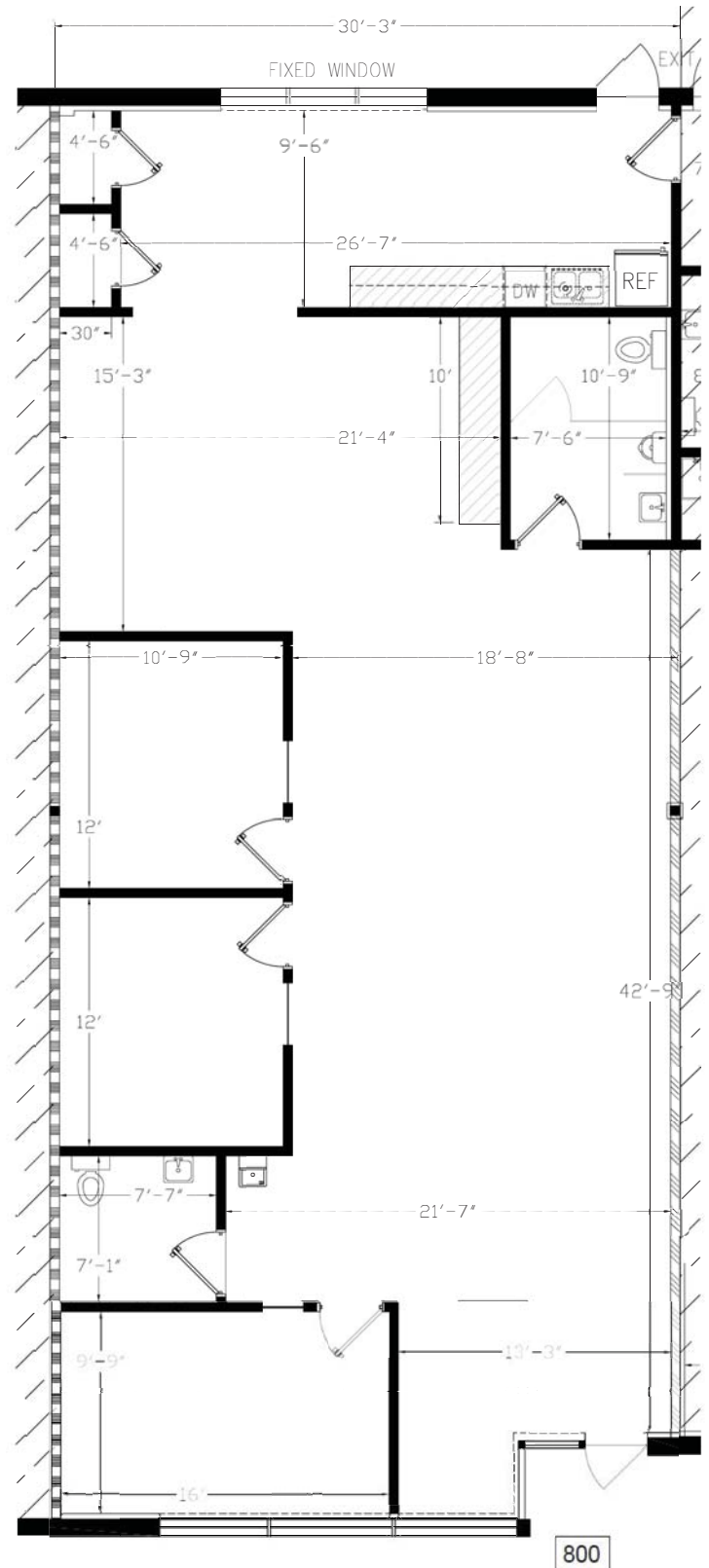
**Chris Ball**, SIOR, CCIM  
Managing Director  
+1 303 312 4280  
chris.ball@cushwake.com

**Esther Kettering**, MBA  
Managing Director  
+1 303 312 4278  
esther.kettering@cushwake.com

1401 Lawrence Street, Suite 1100  
Denver, Colorado 80202

T +1 303 292 3700  
F +1 303 534 8270

[cushmanwakefield.com](http://cushmanwakefield.com)



FOR LEASE: \$13.65/SF NNN

10835 Dover Street, Suite 800  
Westminster, Colorado 80021

**WALNUT CREEK**  
BUSINESS PARK



For more information, please contact:

**Chris Ball**, SIOR, CCIM  
Managing Director  
+1 303 312 4280  
chris.ball@cushwake.com

**Esther Kettering**, MBA  
Managing Director  
+1 303 312 4278  
esther.kettering@cushwake.com



1401 Lawrence Street, Suite 1100 / Denver, Colorado 80202 / PHONE +1 303 292 3700 / FAX +1 303 534 8270 / [cushmanwakefield.com](http://cushmanwakefield.com)

Cushman & Wakefield Copyright 2018. No warranty or representation, express or implied, is made to the accuracy or completeness of the information contained herein, and same is submitted subject to errors, omissions, change of price, rental or other conditions, withdrawal without notice, and to any special listing conditions imposed by the property owner(s). As applicable, we make no representation as to the condition of the property (or properties) in question.