

**Sublease
Available**

cresa

1700 Broadway, Suite 1110

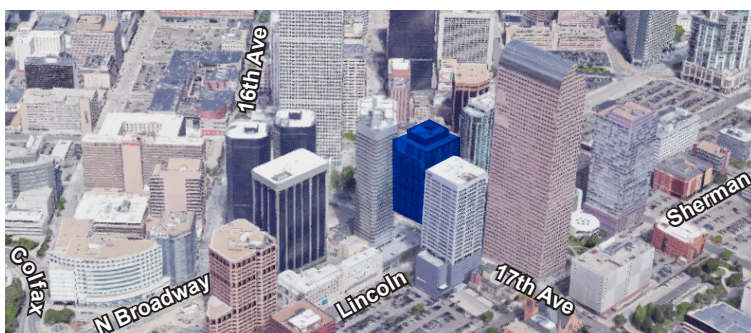
Denver, CO 80290

Space Profile:

Size	3,211 SF
Built	1973 REN 2005
Available	Immediately
Sublease Term	Through 5/31/2021
NEW LOWER RATE	\$18.00/SF FSG
Furniture	Negotiable
Parking	2.00/1,000 SF

Features:

- Building services include Starbucks, Wells Fargo, sandwich shop, printing shop
- Atrium, banking, courtyard, 2-story lobby
- Located one block from RTD and Civic Center Station and one block from 16th Street Mall
- Property manager onsite
- Energy Star labeled

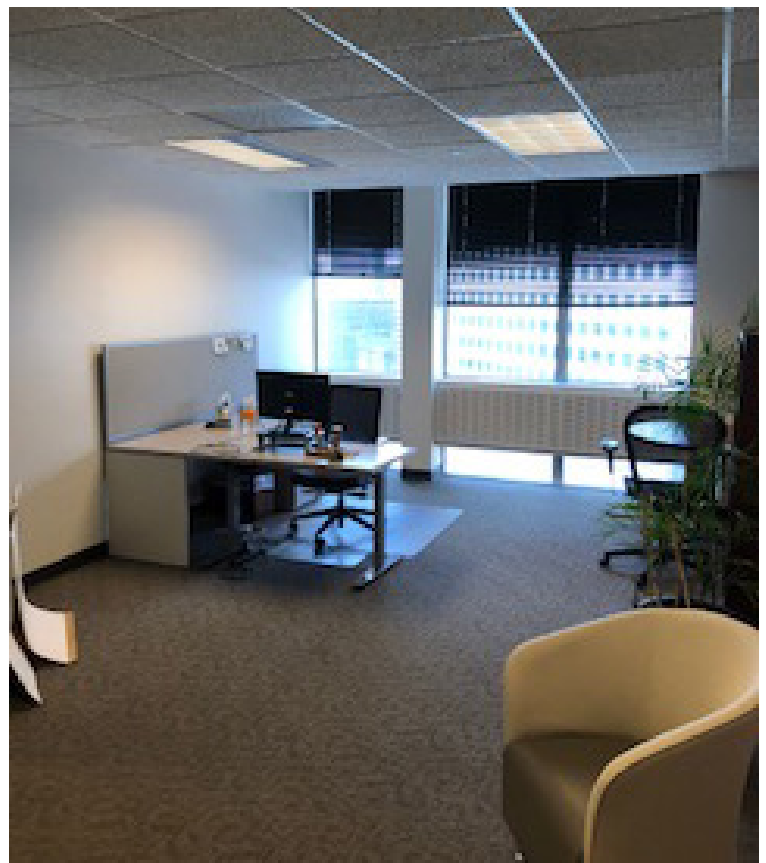
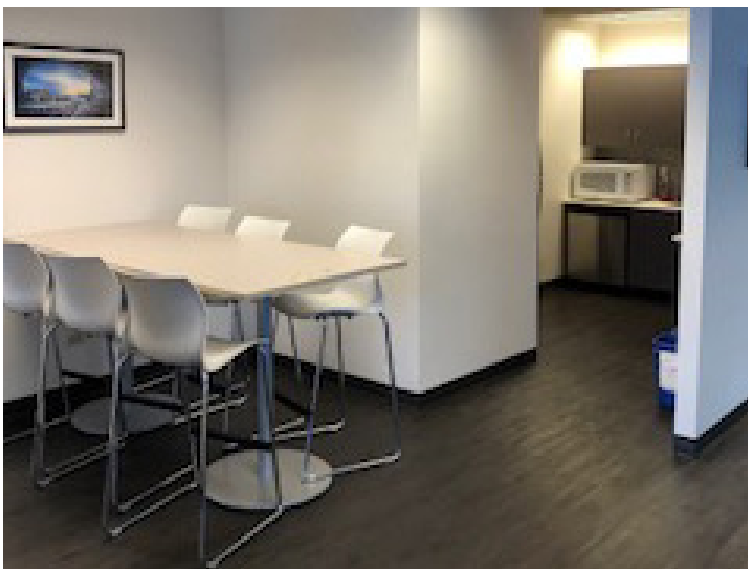


For More Information

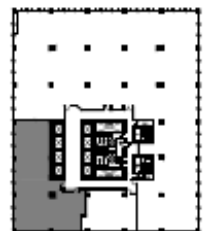
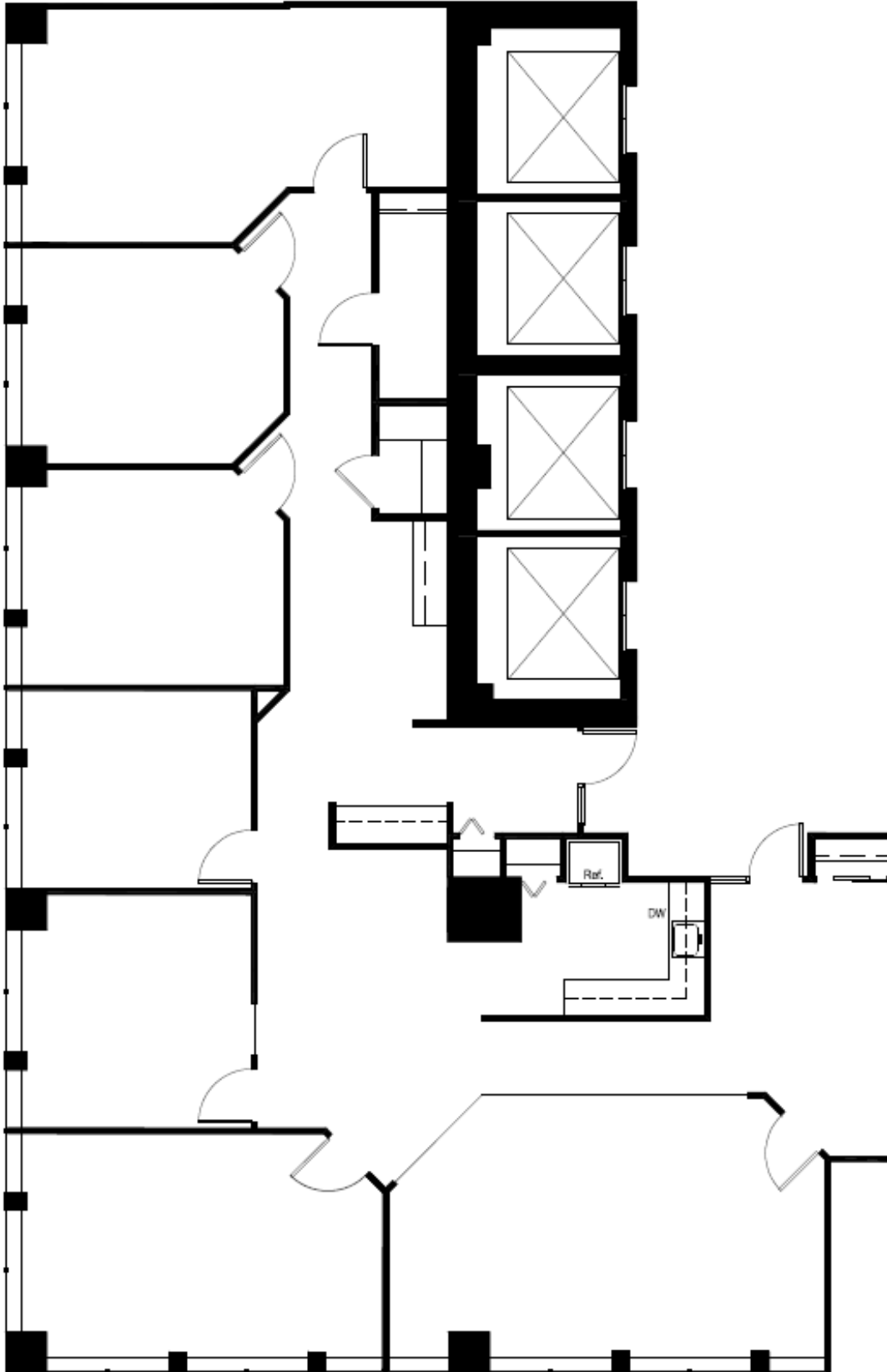
Cresa
1001 17th Street
Suite 1225
Denver, CO 80202
cresa.com/denver

Chris Smith
303.302.1612
csmith@cresa.com

Interior Images



Suite 1110 | 3,111 SF



Proximity Plan