



INDUSTRIAL PROPERTY

FOR SALE

# ±5,000 SF INDUSTRIAL WAREHOUSE

232 Miller Street, Newark, NJ 07114

*For More Information, Contact the Exclusive Brokers*

**JASON M. CRIMMINS, CCIM, SIOR**

*President*

jmcrimmins@blauberg.com  
973.379.6644 x122

**BRIAN DIPINTO**

*Executive Director/Logistics and Rail Specialist*

bdipinto@blauberg.com  
973.379.6644 x149



**THE BLAU & BERG COMPANY**

830 Morris Turnpike, Suite 201, Short Hills, NJ 07078

[www.blauberg.com](http://www.blauberg.com)

# ±5,000 SF INDUSTRIAL WAREHOUSE

232 Miller Street, Newark, NJ 07114



## LOCATION DESCRIPTION

Located in the Ironbound section of Newark  
 Less Than 1 Mile to I-78  
 Approx. 2.7 Miles to NJ Turnpike  
 Approx. 3.1 Miles to Newark Liberty International Airport  
 Approx. 4 Miles to Garden State Parkway

## OFFERING SUMMARY

Sale Price:	\$599,000
Lot Size:	0.06 Acres
Building Size:	5,000 SF

## PROPERTY HIGHLIGHTS

- ±5,000 SF Industrial Warehouse
- 2 Stories
- 2 Exterior Docks
- 12 Feet Ceiling Height
- Masonry Construction
- Lot Size at ±0.06 AC (Block 1179, Lot 73)
- Zoned Commercial
- Taxes at \$4,453.60 (2020)

For More Information, Contact the Exclusive Brokers

**JASON M. CRIMMINS, CCIM, SIOR**

President

jmcrimmins@blauberg.com  
 973.379.6644 x122

**BRIAN DIPINTO**

Executive Director/Logistics and Rail Specialist

bdipinto@blauberg.com  
 973.379.6644 x149

830 Morris Turnpike  
 Suite 201  
 Short Hills, NJ 07078

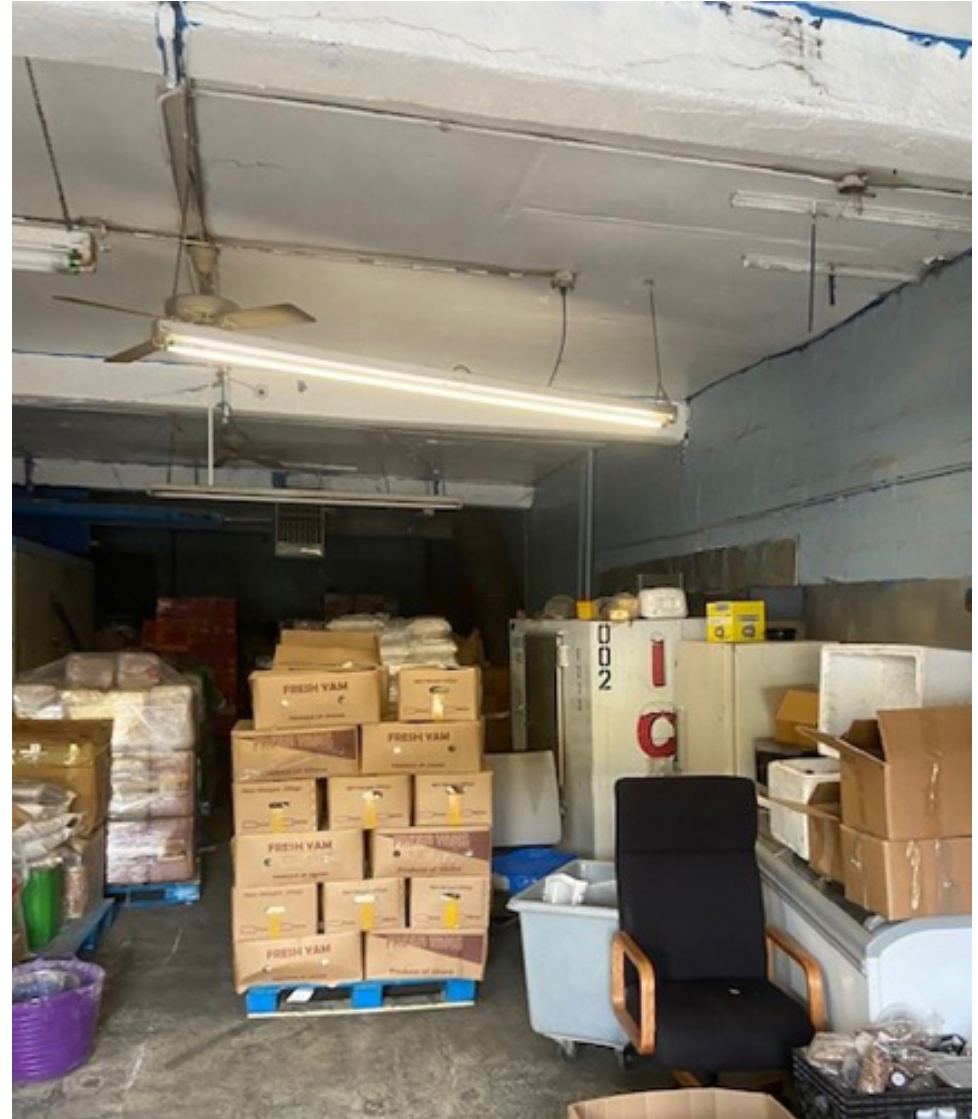
[www.blauberg.com](http://www.blauberg.com)



The information contained herein has been obtained from sources considered to be reliable, but no guarantee of its accuracy is made by this company. In addition, no representation is made respecting zoning, condition of title, dimensions, or any matters of a legal or environmental nature. Such matters should be referred to legal counsel for determination. Terms and conditions are subject to change without prior notice. Subject to errors and omissions.

# ±5,000 SF INDUSTRIAL WAREHOUSE

232 Miller Street, Newark, NJ 07114



For More Information, Contact the Exclusive Brokers

**JASON M. CRIMMINS, CCIM, SIOR**

President

[jmcrimmins@blauberg.com](mailto:jmcrimmins@blauberg.com)

973.379.6644 x122

**BRIAN DIPINTO**

Executive Director/Logistics and Rail Specialist

[bdipinto@blauberg.com](mailto:bdipinto@blauberg.com)

973.379.6644 x149

830 Morris Turnpike  
Suite 201  
Short Hills, NJ 07078

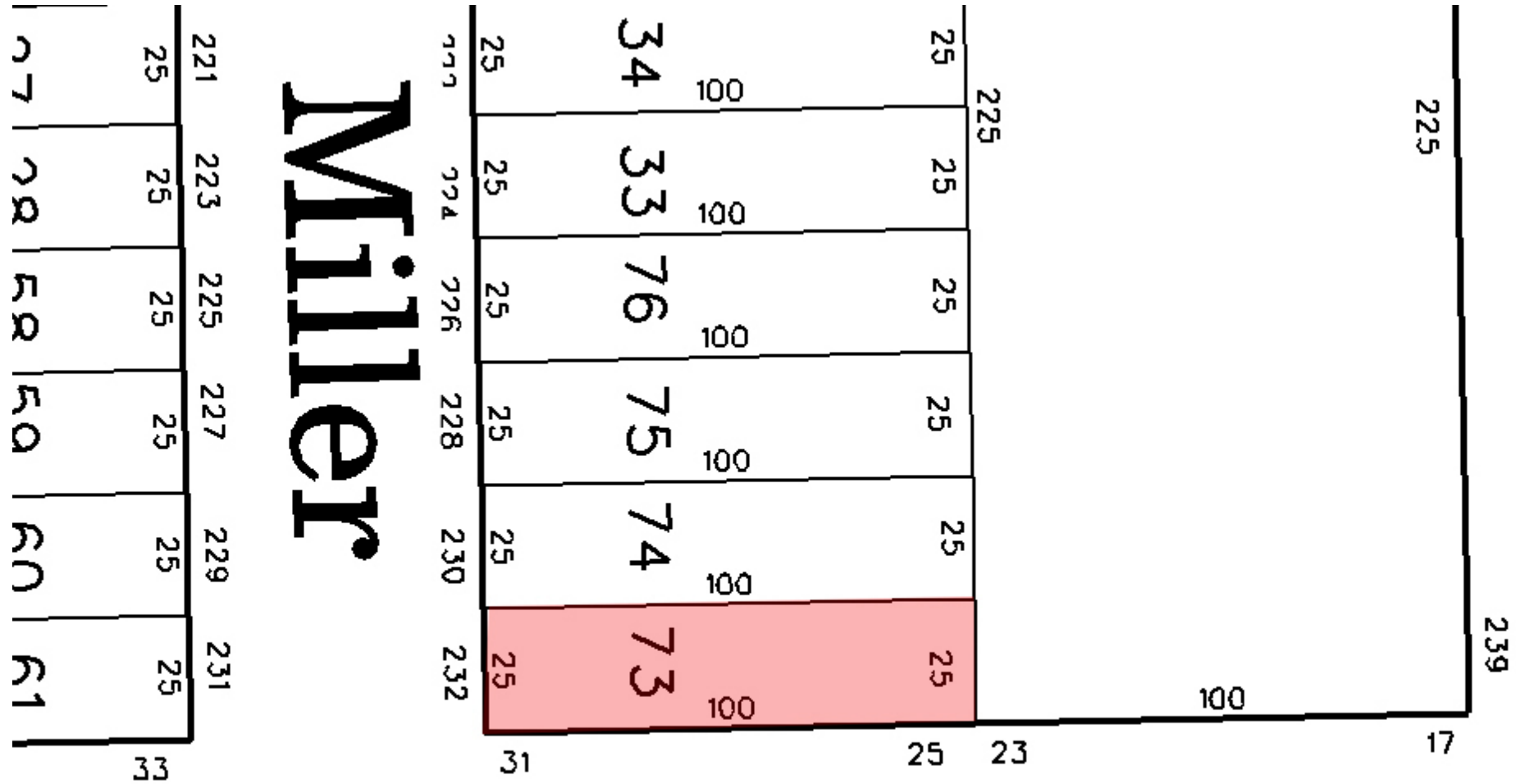
[www.blauberg.com](http://www.blauberg.com)



The information contained herein has been obtained from sources considered to be reliable, but no guarantee of its accuracy is made by this company. In addition, no representation is made respecting zoning, condition of title, dimensions, or any matters of a legal or environmental nature. Such matters should be referred to legal counsel for determination. Terms and conditions are subject to change without prior notice. Subject to errors and omissions.

# ±5,000 SF INDUSTRIAL WAREHOUSE

232 Miller Street, Newark, NJ 07114



# Avenue B

For More Information, Contact the Exclusive Brokers

**JASON M. CRIMMINS, CCIM, SIOR**

President

[jmcrimmings@blauberg.com](mailto:jmcrimmings@blauberg.com)

973.379.6644 x122

**BRIAN DIPINTO**

Executive Director/Logistics and Rail Specialist

[bdipinto@blauberg.com](mailto:bdipinto@blauberg.com)

973.379.6644 x149

830 Morris Turnpike  
Suite 201  
Short Hills, NJ 07078

[www.blauberg.com](http://www.blauberg.com)



The information contained herein has been obtained from sources considered to be reliable, but no guarantee of its accuracy is made by this company. In addition, no representation is made respecting zoning, condition of title, dimensions, or any matters of a legal or environmental nature. Such matters should be referred to legal counsel for determination. Terms and conditions are subject to change without prior notice. Subject to errors and omissions.

# ±5,000 SF INDUSTRIAL WAREHOUSE

232 Miller Street, Newark, NJ 07114



For More Information, Contact the Exclusive Brokers

**JASON M. CRIMMINS, CCIM, SIOR**

*President*

jmcrimmins@blauberg.com

973.379.6644 x122

**BRIAN DIPINTO**

*Executive Director/Logistics and Rail Specialist*

bdipinto@blauberg.com

973.379.6644 x149

830 Morris Turnpike  
Suite 201  
Short Hills, NJ 07078

[www.blauberg.com](http://www.blauberg.com)



The information contained herein has been obtained from sources considered to be reliable, but no guarantee of its accuracy is made by this company. In addition, no representation is made respecting zoning, condition of title, dimensions, or any matters of a legal or environmental nature. Such matters should be referred to legal counsel for determination. Terms and conditions are subject to change without prior notice. Subject to errors and omissions.

# ±5,000 SF INDUSTRIAL WAREHOUSE

232 Miller Street, Newark, NJ 07114



**JASON M. CRIMMINS, CCIM, SIOR**

President

C: 973.568.6611

[jmcrimmins@blauberg.com](mailto:jmcrimmins@blauberg.com)



**BRIAN DIPINTO**

Executive Director/Logistics and Rail Specialist

C: 732.672.0412

[bdipinto@blauberg.com](mailto:bdipinto@blauberg.com)

*For More Information, Contact the Exclusive Brokers*

**JASON M. CRIMMINS, CCIM, SIOR**

*President*

[jmcrimmins@blauberg.com](mailto:jmcrimmins@blauberg.com)

973.379.6644 x122

**BRIAN DIPINTO**

*Executive Director/Logistics and Rail Specialist*

[bdipinto@blauberg.com](mailto:bdipinto@blauberg.com)

973.379.6644 x149

830 Morris Turnpike  
Suite 201  
Short Hills, NJ 07078

[www.blauberg.com](http://www.blauberg.com)



The information contained herein has been obtained from sources considered to be reliable, but no guarantee of its accuracy is made by this company. In addition, no representation is made respecting zoning, condition of title, dimensions, or any matters of a legal or environmental nature. Such matters should be referred to legal counsel for determination. Terms and conditions are subject to change without prior notice. Subject to errors and omissions.