

Industrial Land

1640 Flat River Rd, Coventry, RI 02816

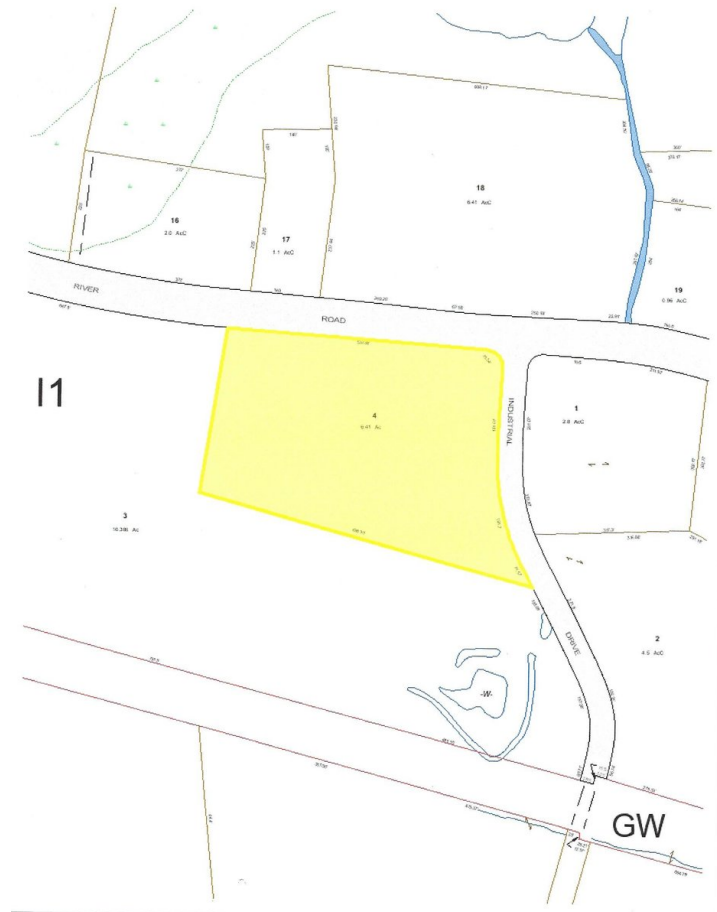


Listing ID: 30296208
 Status: Active
 Property Type: Vacant Land For Sale
 Possible Uses: Industrial, Residential (Single Family)
 Gross Land Area: 235,234 SF
 Sale Price: \$574,900
 Unit Price: \$2.44 PSF
 Sale Terms: Cash to Seller

Overview/Comments

5.4 acres with town water and sewer and gas available. Corner of Rt 117 and Industrial Drive. Flat and ready to build. Join Boston Scientific, Economy Storage, Seaside Casual Furniture, U-Haul and RAS (Rebuilders Automotive Supply)

CALL PAUL HARRISON FOR DETAILS 401-473-7059



General Information

Tax ID/APN:	CO 59 4	Zoning:	LIGHT INDUSTRIAL
Possible Uses:	Industrial, Residential (Single Family), Retail, Self Storage	Sale Terms:	Cash to Seller

Area & Location

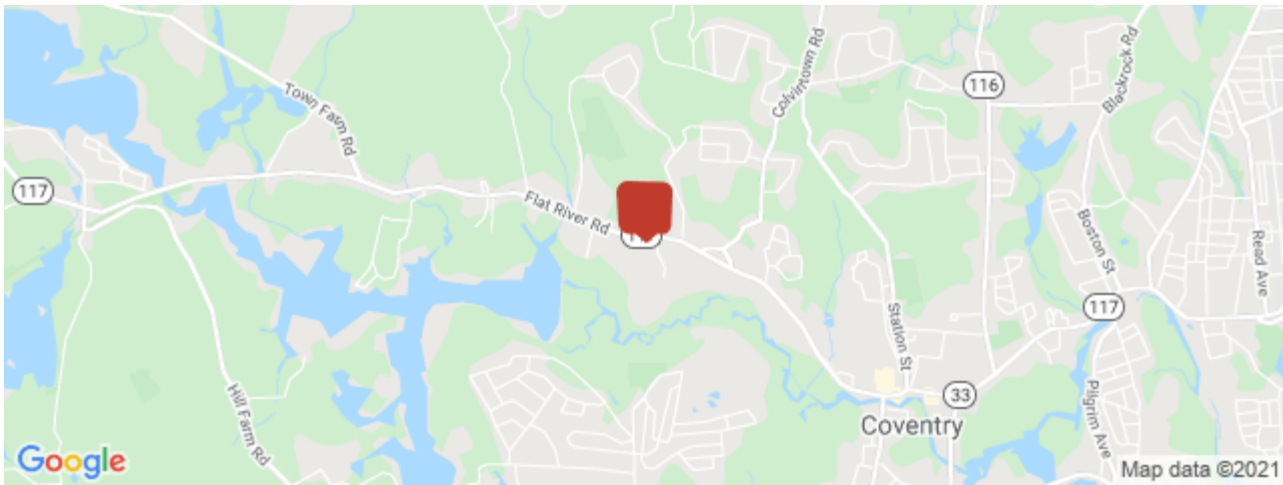
Property Located Between:	Main St and Industrial Drive	Highway Access:	7 minutes away
Property Visibility:	Excellent	Airports:	15 minutes away
Legal Description:	Plat 59 Lot 4	Site Description:	Flat and dry
Largest Nearby Street:	Route 117	Area Description:	Industrial Park
Feet of Frontage:	538		

Land Related

Lot Frontage:	538	Soil Type:	Gravel
Lot Depth:	377	Available Utilities:	Electric, Water, Sewer, Cable, Internet Access
Zoning Description:	Light industrial	Water Service:	Municipal
Topography:	Level	Sewer Type:	Municipal
Easements Description:	none		

Location

Address: 1640 Flat River Rd, Coventry, RI 02816
 County: Kent
 MSA: Providence-Warwick



Property Images



1640FlatRiver2

Property Contacts



Karen Catuogno

Abbott Properties, LLC

401-363-8888 [M]

401-363-8888 [O]

karen@abbottproperties.com

