

Retail Space at Cherrydale Point

3225 N. Pleasantburg Dr Greenville, SC 29609

For Lease
\$17/SF NNN



These retail spaces are located in Cherrydale Point the strip mall at N. Pleasantburg Drive and Furman Hall Rd next to Regal Cinemas Cherrydale 16.



Bryon Culbertson

Commercial Sales & Leases

864-420-2326

BCulbertson@JoynerCommercial.com

JoynerCommercial.com

- Units Available
 - 3225-A = 1,250± SF
 - 3225-D = 2,000± SF
- Ample Parking
- Zoned C-2
- Greenville County
- 30,300± VPD on Pleasantburg Dr.
- [Floor Plans Link](#)



**BERKSHIRE
HATHAWAY**
HomeServices

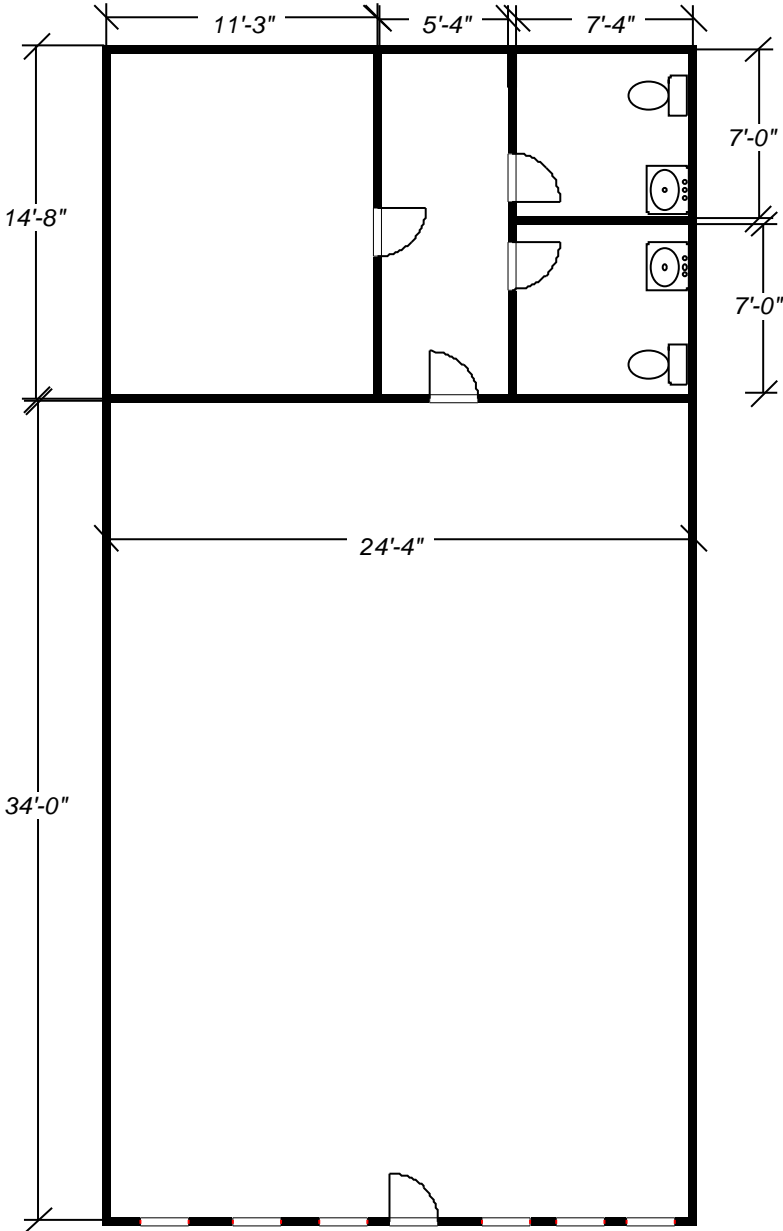
C. Dan Joyner, REALTORS®

COMMERCIAL DIVISION

24 Vardry Street, Ste. 401 Greenville, SC 29601

©2019 BHH Affiliates, LLC. Real Estate Brokerage Services are offered through the network member franchisees of BHH Affiliates, LLC. Most franchisees are independently owned and operated. Berkshire Hathaway HomeServices and the Berkshire Hathaway HomeServices symbol are registered service marks of HomeServices of America, Inc.® Information not verified or guaranteed. If your property is currently listed with a Broker, this is not intended as a solicitation.

**3225 N Pleasantburg Dr.
Retail Space 1,250SF
Suite A**



3225 Pleasantburg Dr
Retail Space 2,000SF
Suite D

