

Green Office Space for Lease



Views overlooking the Schuylkill River



2401 WALNUT STREET

GATEWAY TO UNIVERSITY CITY

2401 is in a prime location boasting a diverse portfolio of tenants, with scenic views overlooking the Schuylkill River and Center City Philadelphia. Among the many benefits of being at 2401 is being in a Gold LEED Certified Building with a Green Roof. 2401 has onsite parking and easy access to I-76, I-676, I-95 and the running and bike paths along the Schuylkill River.

FEATURED TENANTS

FREEDOM.PAY

VMA
VOITH & MACTAVISH ARCHITECTS

kw
KELLERWILLIAMS.

UTILITY
INFRASTRUCTURE
SOLUTIONS
hbk
ENGINEERING

CityCoHo
The PHILLY NEXUS

SPREAD
BAGELRY



STOCKTON
REAL ESTATE ADVISORS

Stockton Real Estate Advisors
1760 Market Street, Suite 900
Philadelphia, PA 19103
www.StocktonREA.com



LEASING OPPORTUNITIES AVAILABLE AT 2401 WALNUT

New Safety Protocols at 2401 Walnut

Fresh air is filtered with MERV 13 filtration

Hand sanitation stations installed at all entries and elevator landings

Bathrooms have touch-free/motion sensor toilets, faucets, soap, and hand dryers

Touch-free temperature scanner located in the lobby

Building Highlights and Amenities

Spread Bagelry "Spreadquarters" located within the Building

On-site parking, Zipcar, and Indego bike share available on the Premises

~10,000 SF coworking space

Polished concrete floors with exposed ceilings and ductwork

Green roof

7' high clear glass and low-E windows

Greywater system

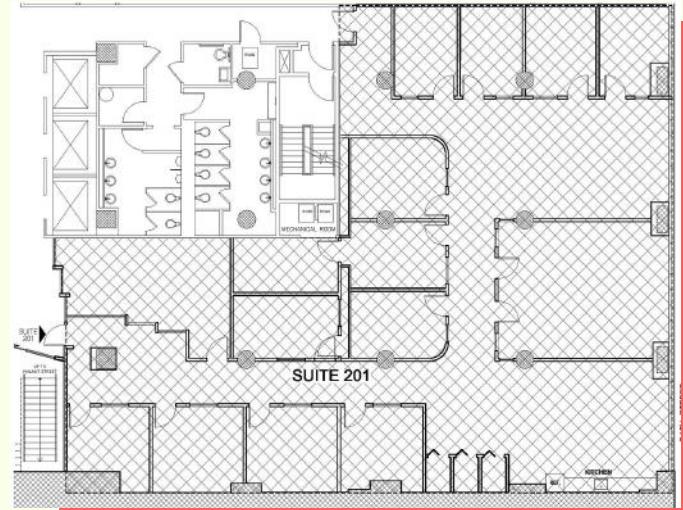
New closed-circuit coolers

22,500 CFM air-intake/energy recovery wheel

Energy management system with CO2 Sensors

Second Floor

Suite 201 | 5,927 SF

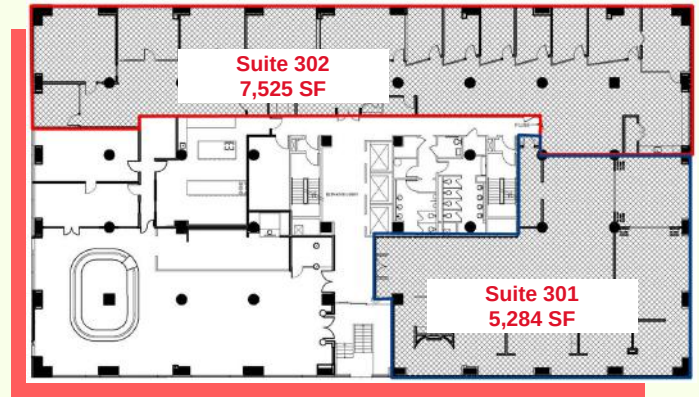


Third Floor

Suite 301 | 5,284 SF

Suite 302 | 7,525 SF

Total Contiguous | 12,809 SF



Transit Score Walk Score Bike Score

100

98

99

CONTACT INFORMATION

Michael T. Dolan

610.529.2079 - Mobile

mdolan@StocktonREA.com



STOCKTON
REAL ESTATE ADVISORS

Jacklyn Hadzor

609.760.9985 - Mobile

jhadzor@StocktonREA.com

Stockton Real Estate Advisors, LLC

1760 Market Street, Suite 900 | Philadelphia, PA 19103 | 215-636-4444 | www.StocktonREA.com