



1521 LOCUST STREET

Philadelphia, PA 19102

STOCKTON
REAL ESTATE ADVISORS

+/- 3,500 SF AVAILABLE FOR SUBLEASE

**NEWLY PAINTED
AND CARPETED**



SUBLEASE AVAILABLE THROUGH JANUARY 31, 2022

- Seven (7) offices including two (2) executive offices
- One (1) executive office with a private bathroom
- Kitchenette, storage room and multiple workstation areas
- Conference room with seating for twelve (12)
- Furniture available upon request
- Direct elevator access to suite via private key code
- Building monitored by lobby attendant (Monday-Friday)
- Private men's and women's bathrooms

Contact Information

Stockton Real Estate Advisors

1760 Market Street, Suite 900
Philadelphia, PA 19103
215-636-4444 | www.StocktonREA.com

Jacklyn Hadzor

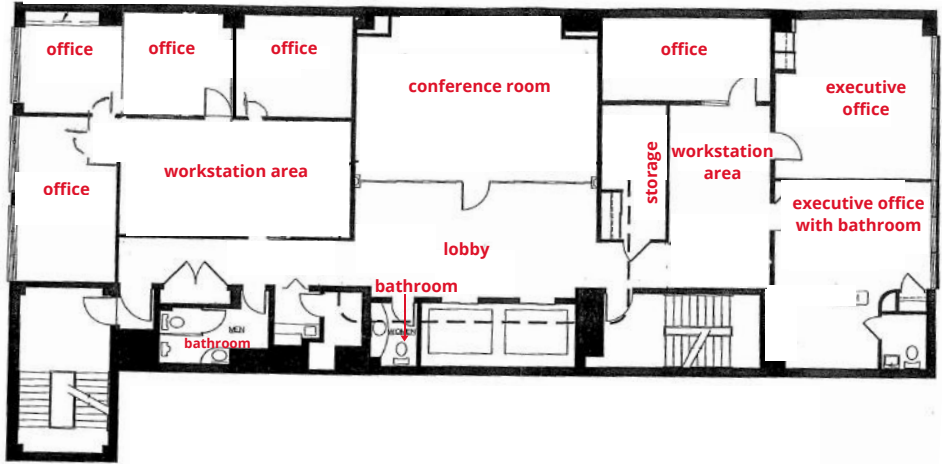
(O) 215-391-4803
(M) 609-760-9985
jhadzor@stocktonREA.com

Michael Dolan

(O) 215-636-4442
(M) 610-529-2079
mdolan@stocktonREA.com



4th FLOOR PLAN



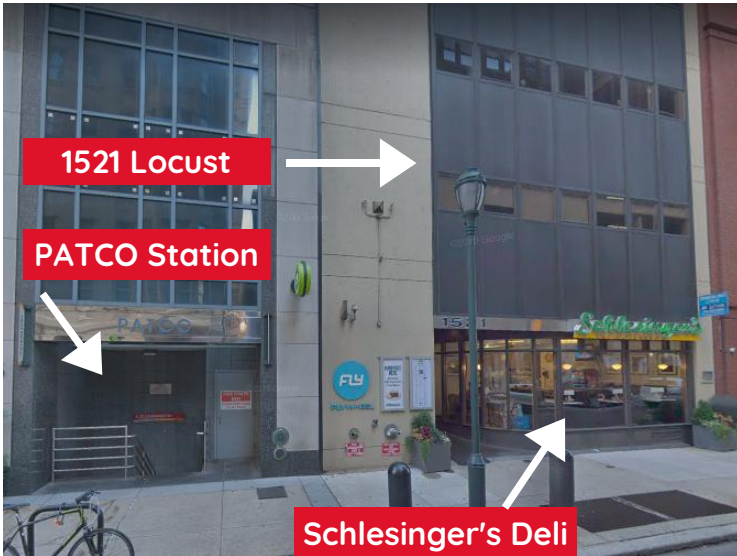
LOCATION HIGHLIGHTS

- Conveniently located next to the 15th/16th & Locust Street PATCO Station
- One (1) block away from Septa's Broad Street Line
- Close proximity to Center City shops, entertainment and restaurants
- Walking distance to Philadelphia landmarks, including City Hall and Rittenhouse Square

Walk Score



Transit Score



LOCATED WITHIN 1 BLOCK



Contact Information

Stockton Real Estate Advisors
 1760 Market Street, Suite 900
 Philadelphia, PA 19103
 215-636-4444 | www.StocktonREA.com

Jacklyn Hadzor
 (O) 215-391-4803
 (M) 609-760-9985
 jhadzor@stocktonREA.com

Michael Dolan
 (O) 215-636-4442
 (M) 610-529-2079
 mdolan@stocktonREA.com