

FOR SALE

# Mountain View Assembly Church

2902 E OLYMPIC AVE, SPOKANE, WA 99217



**WINDERMERE MANITO COMMERCIAL  
WINDERMERE/MANITO LLC**

2829 S. Grand Blvd, Spokane, WA 99203  
509.747.1051  
WindermereCommercial.net

**CHRIS BORNHOFT, CCIM**

509.599.6504  
chris@bornhoft.com

# Executive Summary

2902 E OLYMPIC AVE, SPOKANE, WA 99217

FOR SALE



## OFFERING SUMMARY

**Sale Price:** \$300,000

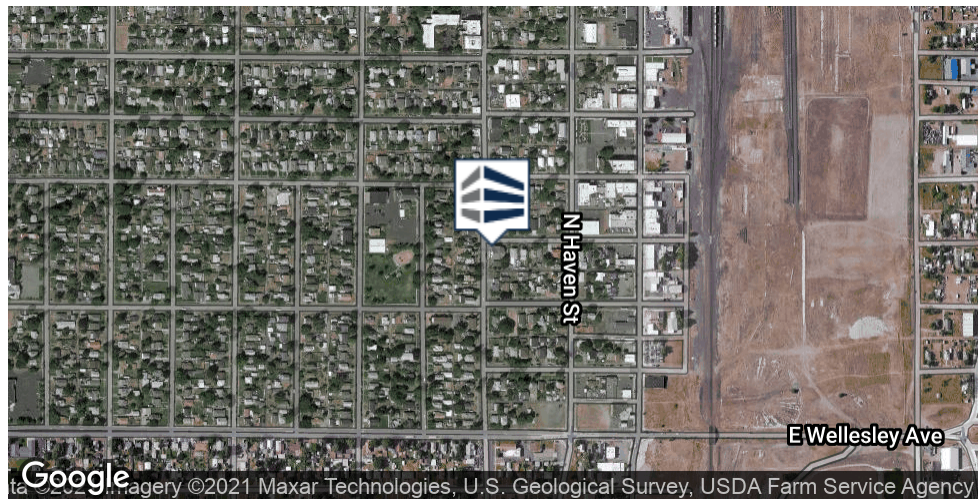
**Building Size:** 6,944 SF

**Renovated:** 1978

**Zoning:** RHD-35

## PROPERTY OVERVIEW

Mountain View Assembly Of God is a charming unique church located nearby the historic Hillyard district, filled with many local businesses.



COMMERCIAL  
Real Estate



Information is deemed reliable but not guaranteed. Broker



### WINDERMERE MANITO COMMERCIAL WINDERMERE/MANITO LLC

2829 S. Grand Blvd, Spokane, WA 99203  
509.747.1051  
WindermereCommercial.net

### CHRIS BORNHOFT, CCIM

509.599.6504  
chris@bornhoft.com

# Additional Photos

2902 E OLYMPIC AVE, SPOKANE, WA 99217

FOR SALE



**WINDERMERE MANITO COMMERCIAL  
WINDERMERE/MANITO LLC**

2829 S. Grand Blvd, Spokane, WA 99203  
509.747.1051  
WindermereCommercial.net

**CHRIS BORNHOFT, CCIM**

509.599.6504  
chris@bornhoft.com

# Additional Photos

2902 E OLYMPIC AVE, SPOKANE, WA 99217

FOR SALE



**WINDERMERE MANITO COMMERCIAL  
WINDERMERE/MANITO LLC**

2829 S. Grand Blvd, Spokane, WA 99203  
509.747.1051  
WindermereCommercial.net

**CHRIS BORNHOFT, CCIM**

509.599.6504  
chris@bornhofs.com

# Additional Photos

2902 E OLYMPIC AVE, SPOKANE, WA 99217

FOR SALE



**WINDERMERE MANITO COMMERCIAL  
WINDERMERE/MANITO LLC**

2829 S. Grand Blvd, Spokane, WA 99203  
509.747.1051  
WindermereCommercial.net

**CHRIS BORNHOFT, CCIM**

509.599.6504  
chris@bornhoft.com

# Additional Photos

2902 E OLYMPIC AVE, SPOKANE, WA 99217

FOR SALE



**WINDERMERE MANITO COMMERCIAL  
WINDERMERE/MANITO LLC**

2829 S. Grand Blvd, Spokane, WA 99203  
509.747.1051  
WindermereCommercial.net

**CHRIS BORNHOFT, CCIM**

509.599.6504  
chris@bornhoft.com



# Location Map

2902 E OLYMPIC AVE, SPOKANE, WA 99217



**WINDERMERE MANITO COMMERCIAL  
WINDERMERE/MANITO LLC**

2829 S. Grand Blvd, Spokane, WA 99203  
509.747.1051  
WindermereCommercial.net

**CHRIS BORNHOFT, CCIM**

509.599.6504  
chris@bornhoft.com

# Retailer Map

2902 E OLYMPIC AVE, SPOKANE, WA 99217

FOR SALE



## WINDERMERE MANITO COMMERCIAL WINDERMERE/MANITO LLC

2829 S. Grand Blvd, Spokane, WA 99203  
509.747.1051  
WindermereCommercial.net

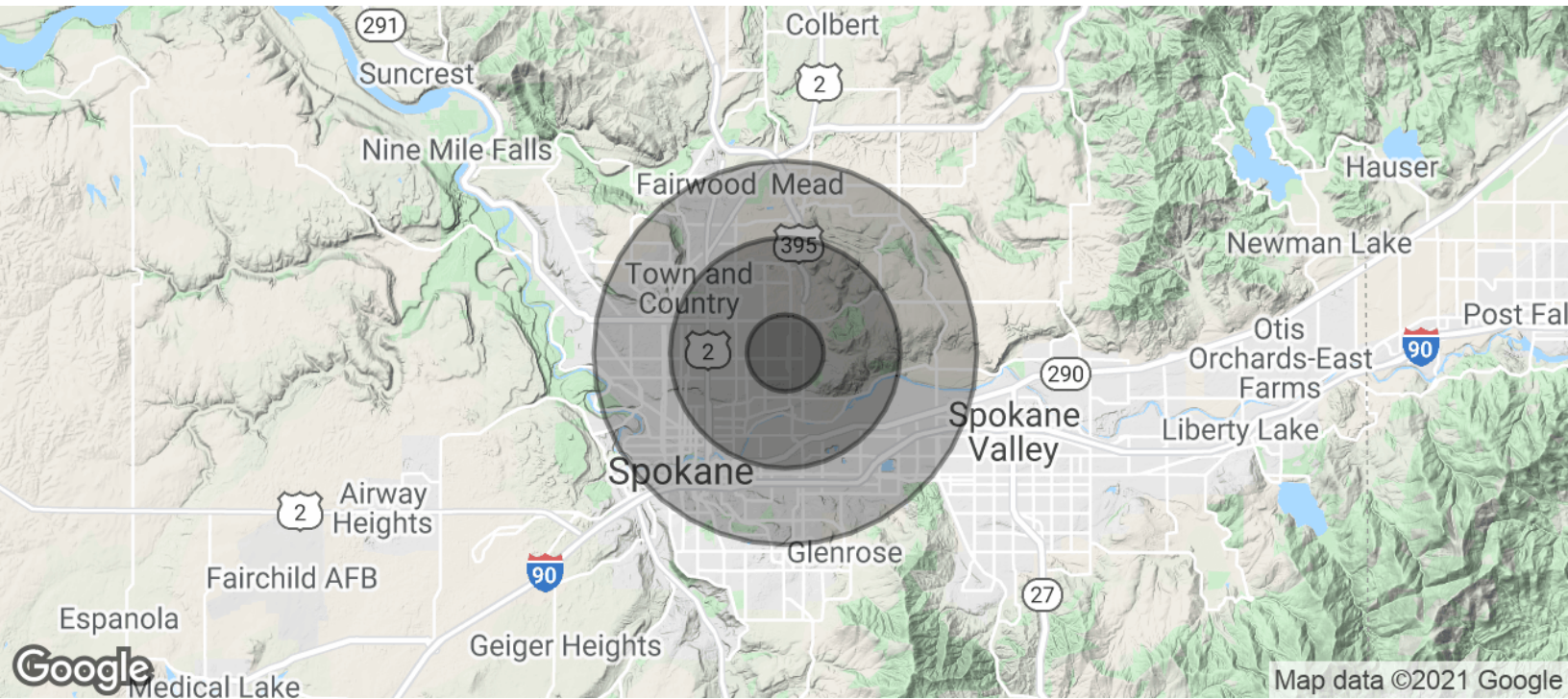
## CHRIS BORNHOFT, CCIM

509.599.6504  
chris@bornhoft.com



# Demographics Map & Report

2902 E OLYMPIC AVE, SPOKANE, WA 99217



## POPULATION

	1 MILE	3 MILES	5 MILES
Total Population	14,271	80,677	200,362
Average age	32.3	31.7	33.6
Average age (Male)	33.3	30.8	33.1
Average age (Female)	31.4	32.7	34.3

## HOUSEHOLDS & INCOME

	1 MILE	3 MILES	5 MILES
Total households	5,550	33,478	84,014
# of persons per HH	2.6	2.4	2.4
Average HH income	\$37,662	\$40,244	\$46,526
Average house value	\$120,081	\$127,759	\$158,162

\* Demographic data derived from 2010 US Census



### WINDERMERE MANITO COMMERCIAL WINDERMERE/MANITO LLC

2829 S. Grand Blvd, Spokane, WA 99203  
509.747.1051  
WindermereCommercial.net

### CHRIS BORNHOFT, CCIM

509.599.6504  
chris@bornhoft.com