

McDowell Mountain Business Park

5,166± SF OFFICE SPEC SUITE FOR LEASE



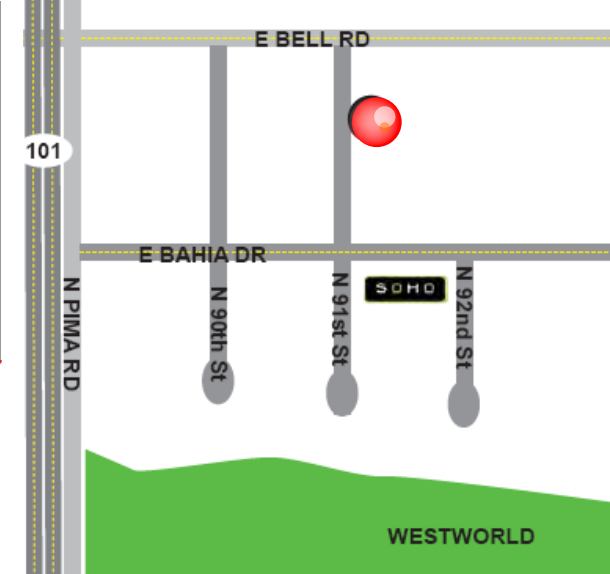
OUTSTANDING LOCATION!

16641 N 91st Street | Scottsdale, Arizona 85260

FEATURES

First floor spec floor plan includes:

- Conference room
- Eleven (11) offices
- Open office area
- Men's & Women's restrooms
- Storage closets
- Ample parking
- Excellent ingress/egress
- Minutes from Loop 101 Freeway onramp
- Spacious with lots of natural lighting

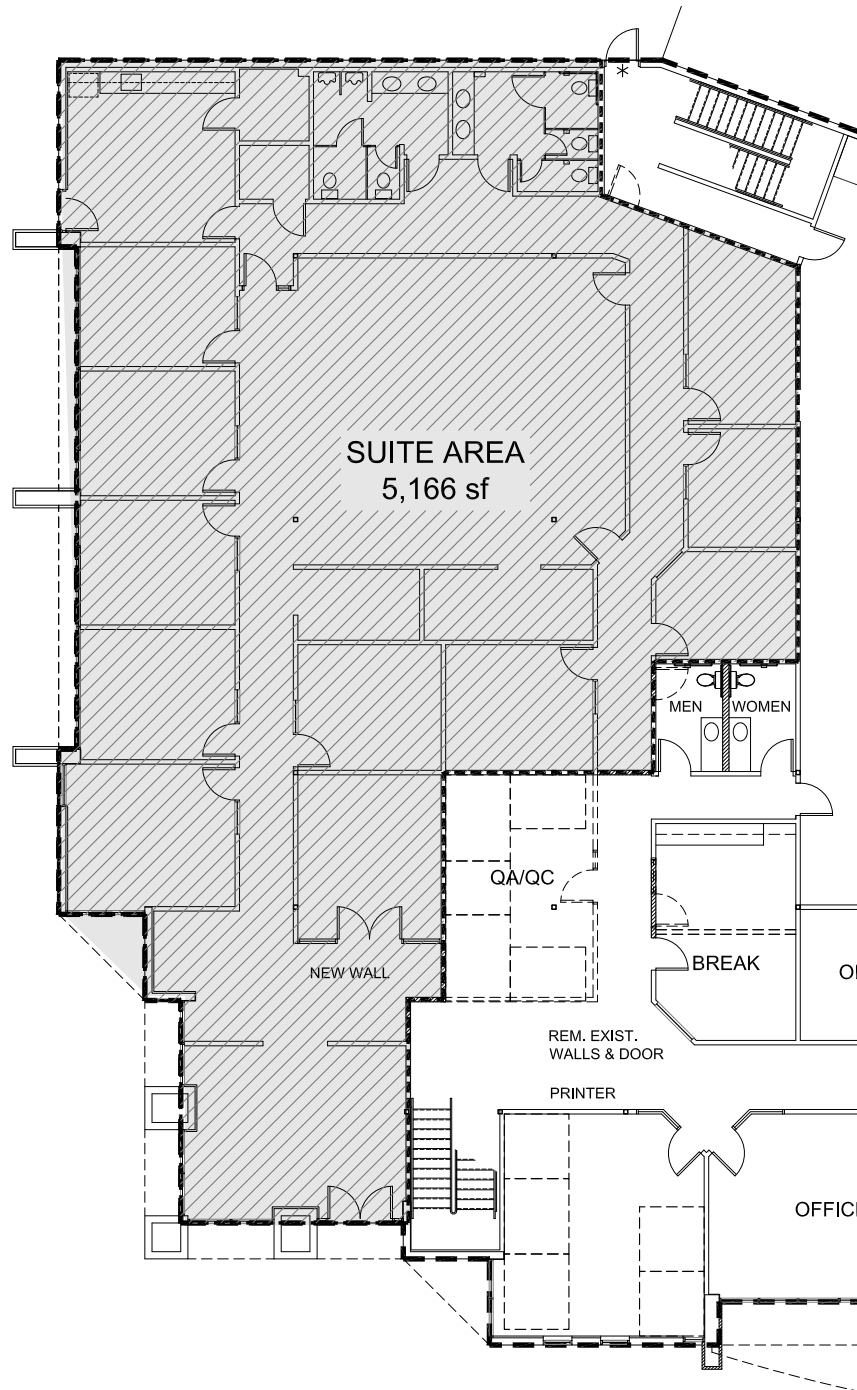


For additional information, please contact Randy



Randy Shell
Designated Broker
C 480.694.4100
O 480.443.3992
randy@shellcommercial.com

 **SHELL**
Commercial Investment Real Estate
480 443 3992



SPEC FLOOR PLAN
5,166± SF

NOT TO SCALE

All information furnished regarding property for sale, rental or financing is from sources deemed reliable, but no warranty or representation is made to the accuracy thereof and same is submitted to errors, omissions, change of price, rental or other conditions, prior to sale, lease or financing or withdrawal without notice. No liability of any kind is to be imposed on the broker herein. This information has been secured from sources deemed reliable, however, we make no warranties as to its accuracy.