

LAND OFFICE INDUSTRIAL RETAIL INVESTMENTS

Evans East Professional Building

5800 E. Evans Ave., Denver, CO 80222



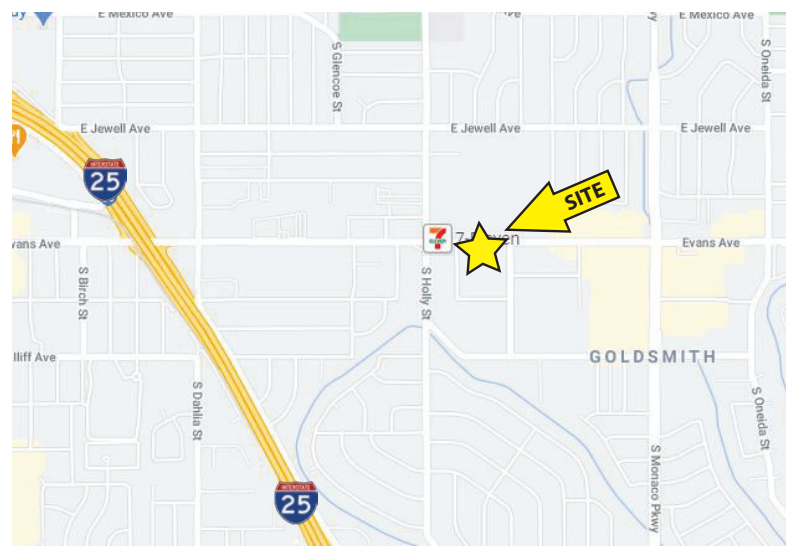
www.FullerRE.com



Overview

Building:	12,583± SF
Available:	1,440± SF
Parking:	70 Spaces (5.27:1,000 ratio)
Lease Rate:	\$14.00/SF Full Service Gross

Located about ½ mile east of I-25 on busy E. Evans Ave., the Evans East Professional Building currently offers one suite for lease. Suite 204, a 1,440± SF office offers three private offices, reception area & open space. Abundant off-street parking. Responsive on-site ownership. There are numerous nearby retail and restaurant amenities.



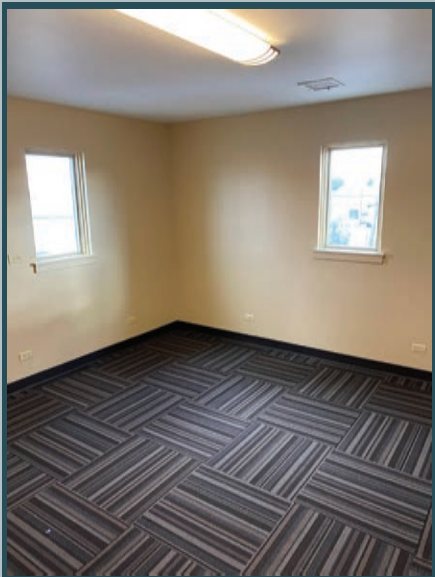
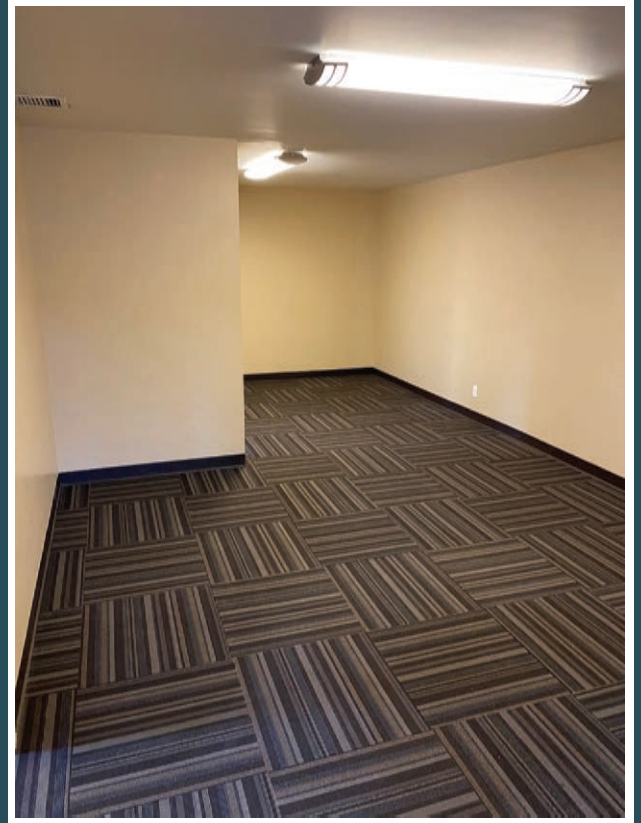
Fuller Real Estate
(303) 534-4822





[Click for
Brokerage
Disclosure](#)

Travis Wanger
(720) 974-2790 direct
(303) 888-1061 mobile
TWanger@FullerRE.com

Alex Scott
(720) 287-5417 direct
(972) 207-8877 mobile
AScott@FullerRE.com

©2021 Fuller Real Estate. All Rights Reserved. Price, terms and availability subject to change without notice.



DEMOGRAPHICS	1 Mile	3 Miles	5 Miles
 Population	19,193	188,986	456,677
 Households	8,599	90,782	217,394
 Medium Income	\$64,713	\$67,276	\$68,199
 Medium Age	38.60	36.60	36.70
 Traffic	43,757 vpd - E. Evans Ave at S. Leyden St.		