

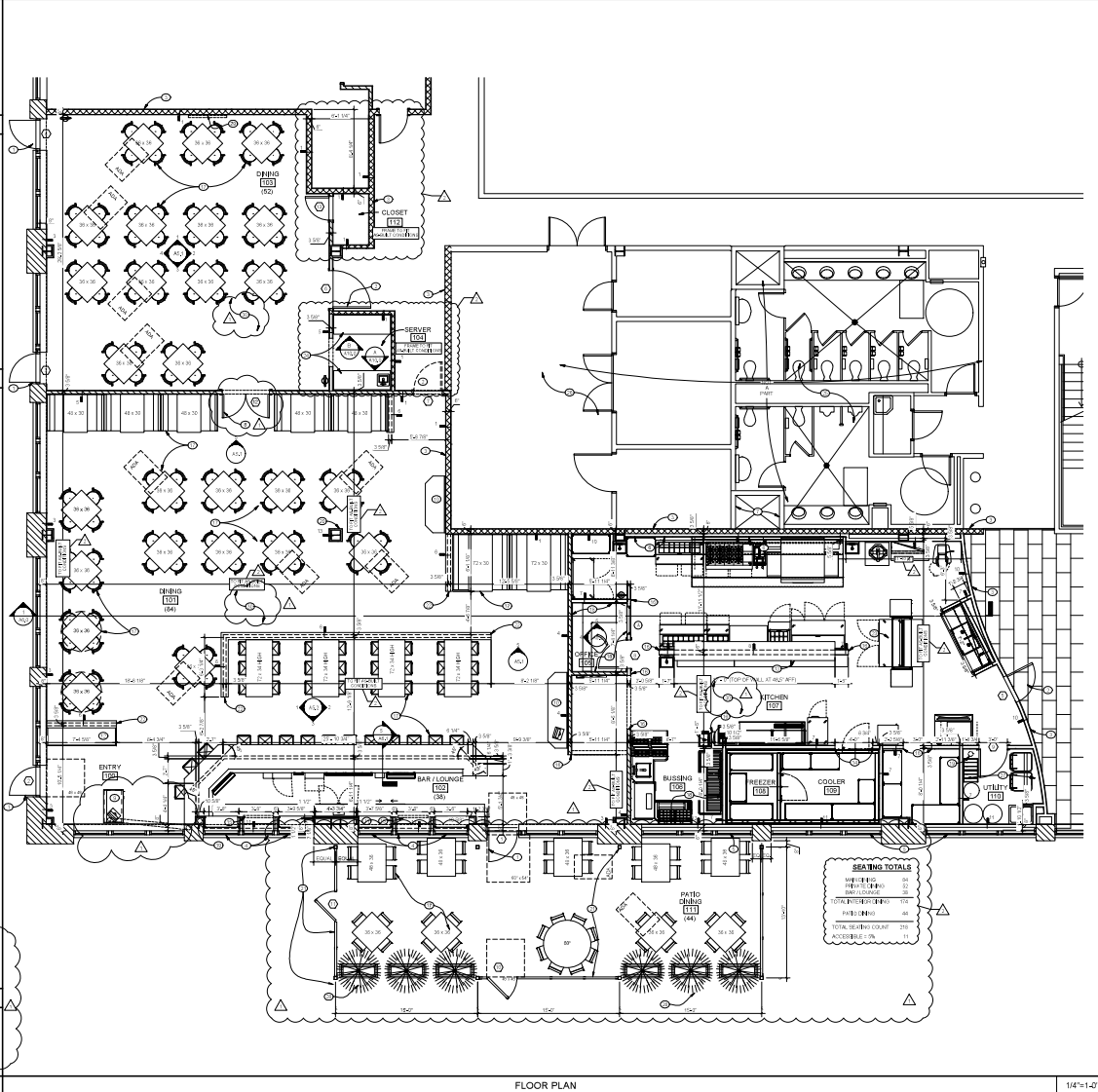
LEGEND

ALSO REFER TO ELEMENTS

WALL TYPES

KEY NOTES

GENERAL NOTES



ROMACELLI BISTRO
OFFICE TOWER AT TOWN SQUARE
 HWY 165 & CENTURYLINK DRIVE
 MONROE, LA

ROMACELLI

Ben Palmer-Ball, Jr., Architect
 3988 hopewell station
 shreveville, ky 40299
 502.745.9559
 bpalmerball@earthlink.net

idea source
 2216 plantside drive
 louisville, ky 40299
 502.753.0053
 502.491.1091 fax
 ideasourceky.com

DATE: 3/18/17
SCALE: 2/8"=1'-0"
DESIGNED BY: BPS
CHECKED BY: BPS

A1.0