



WILLIAMSBURG ATTRACTIVE OFFICE SPACE

FOR LEASE

2020 E. 70TH STREET, SHREVEPORT, LA 71105

- Professional office building
- Space available as small as one room office 350 SF, up to contiguous space of 1,985 SF
- 1,985 SF may be subdivided
- AT&T Fiber served: Blazing fast internet with Cloud Solution and Broadband service options
- Full service lease; Landlord provides utilities, janitorial, and all maintenance
- Great location in South Shreveport on E. 70th Street convenient to South Bossier, Clyde Fant Parkway and Arthur Teague Parkway
- Elevator available
- Good free parking area



For more information, contact:

Michele Sauls, Associate Broker | 318.222.2244

msauls@vintagerealty.com | vintagerealty.com

ALL INFORMATION CONTAINED HEREIN IS BELIEVED TO BE ACCURATE, BUT IS NOT WARRANTED AND NO LIABILITY OF ERRORS OR OMISSIONS IS ASSURED BY EITHER THE PROPERTY OWNER OR VINTAGE REALTY COMPANY OR ITS AGENTS AND EMPLOYEES. PRICES AS STATED HEREIN AND PRODUCT AVAILABILITY IS SUBJECT TO CHANGE AND/OR SALE OR LEASE WITHOUT PRIOR NOTICE, AND ALL SIZES AND DIMENSIONS ARE SUBJECT TO CORRECTION. REV 6/2020



WILLIAMSBURG ATTRACTIVE OFFICE SPACE FOR LEASE

2020 E. 70TH STREET
SHREVEPORT, LA 71105



For More Information Contact:

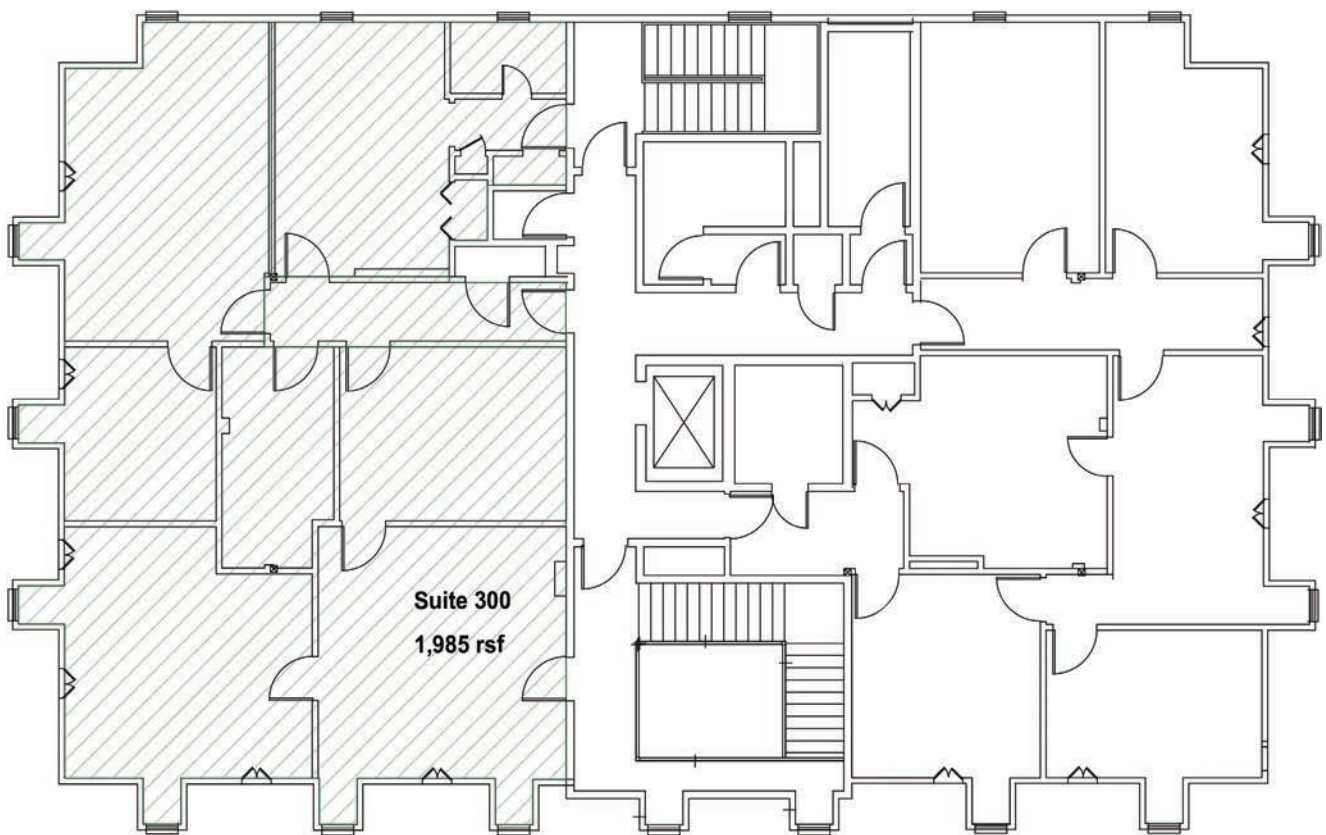
Michele Sauls, Associate Broker | 318-222-2244
msauls@vintagerealty.com | vintagerealty.com

ALL INFORMATION CONTAINED HEREIN IS BELIEVED TO BE ACCURATE, BUT IS NOT WARRANTED AND NO LIABILITY OF ERRORS OR OMISSIONS IS ASSURED BY EITHER THE PROPERTY OWNER OR VINTAGE REALTY COMPANY OR ITS AGENTS AND EMPLOYEES. PRICES AS STATED HEREIN AND PRODUCT AVAILABILITY IS SUBJECT TO CHANGE AND/OR SALE OR LEASE WITHOUT PRIOR NOTICE, AND ALL SIZES AND DIMENSIONS ARE SUBJECT TO CORRECTION. 6/2020

WILLIAMSBURG ATTRACTIVE OFFICE SPACE FOR LEASE

2020 E. 70TH STREET
SHREVEPORT, LA 71105

Floor Plan



3rd Floor



For More Information Contact:

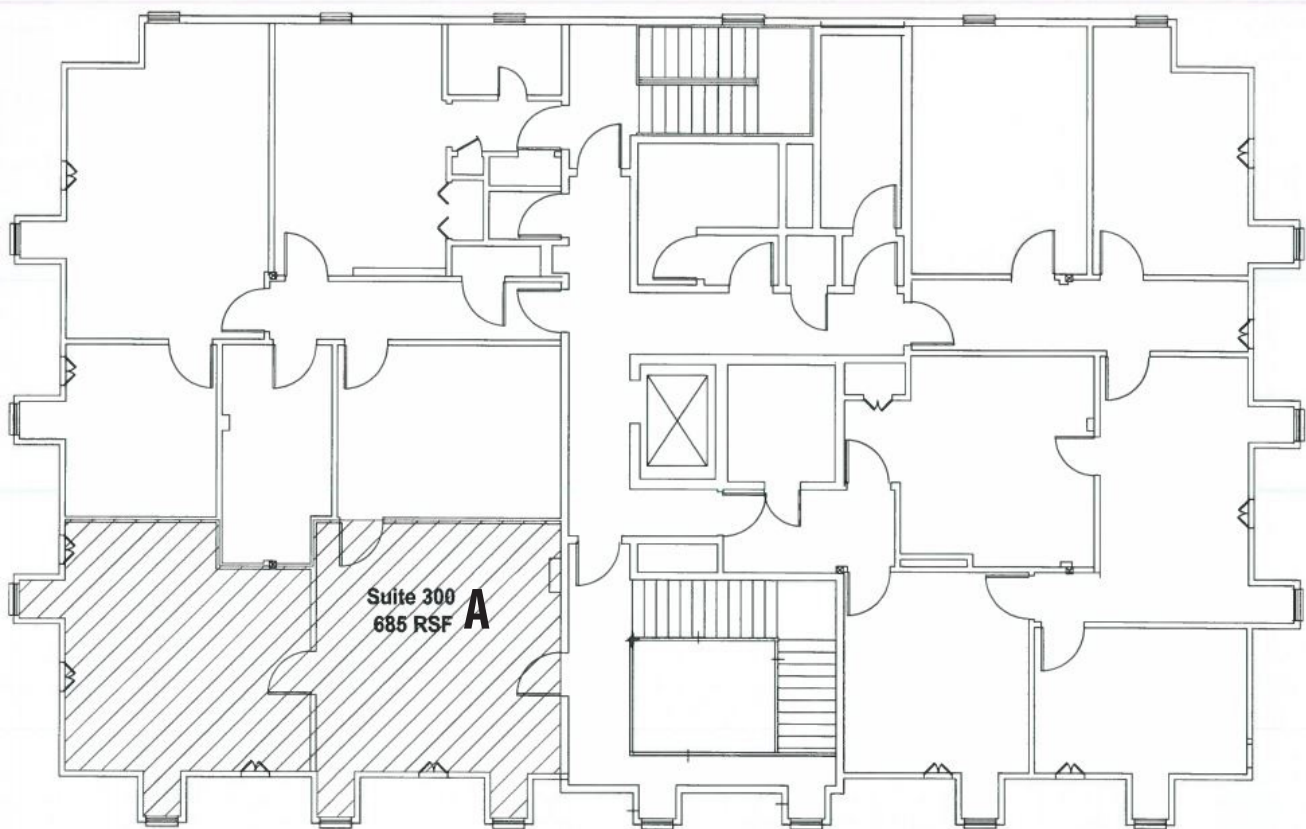
Michele Sauls, Associate Broker | 318-222-2244
msauls@vintagerealty.com | vintagerealty.com

ALL INFORMATION CONTAINED HEREIN IS BELIEVED TO BE ACCURATE, BUT IS NOT WARRANTED AND NO LIABILITY OF ERRORS OR OMISSIONS IS ASSURED BY EITHER THE PROPERTY OWNER OR VINTAGE REALTY COMPANY OR ITS AGENTS AND EMPLOYEES. PRICES AS STATED HEREIN AND PRODUCT AVAILABILITY IS SUBJECT TO CHANGE AND/OR SALE OR LEASE WITHOUT PRIOR NOTICE, AND ALL SIZES AND DIMENSIONS ARE SUBJECT TO CORRECTION. 6/2020

WILLIAMSBURG ATTRACTIVE OFFICE SPACE FOR LEASE

2020 E. 70TH STREET
SHREVEPORT, LA 71105

Schematic 1



3rd Floor



For More Information Contact:

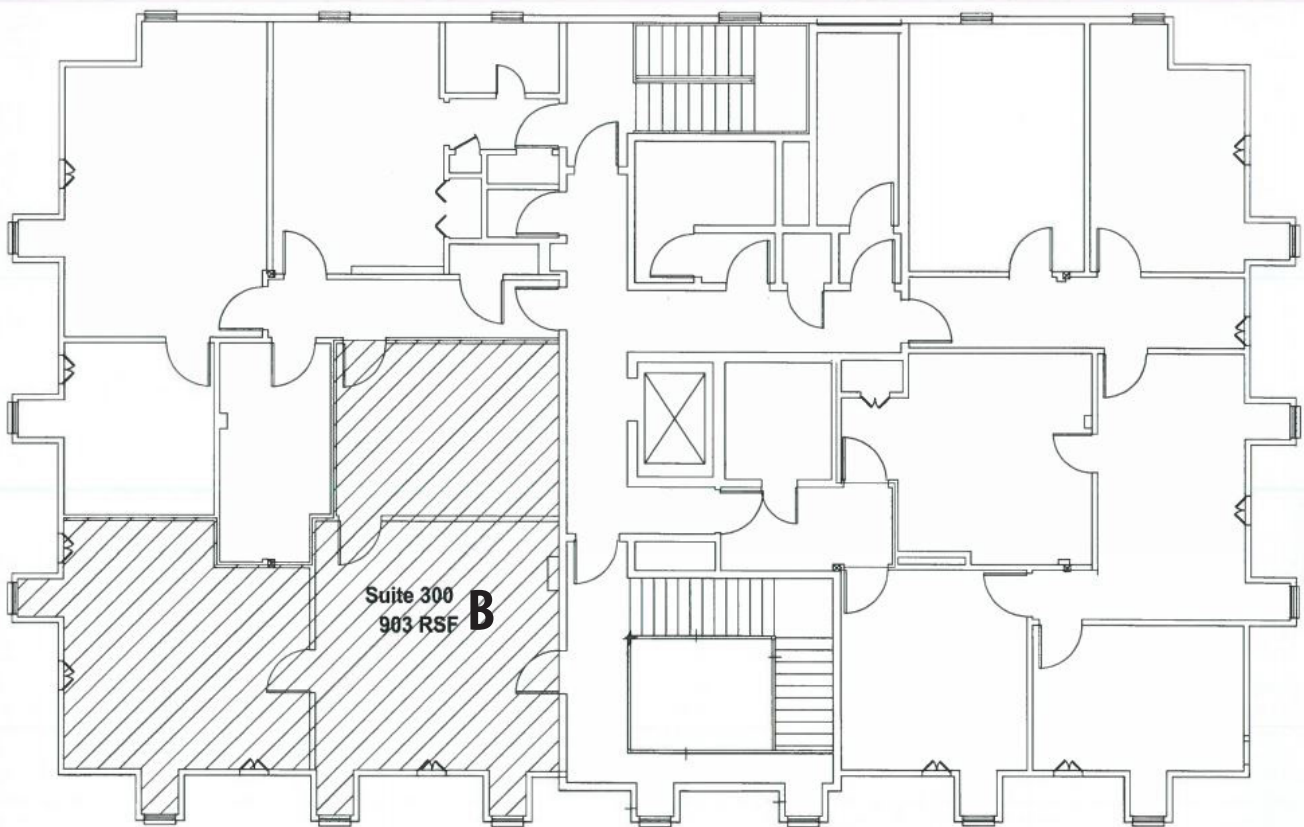
Michele Sauls, Associate Broker | 318-222-2244
msauls@vintagerealty.com | vintagerealty.com

ALL INFORMATION CONTAINED HEREIN IS BELIEVED TO BE ACCURATE, BUT IS NOT WARRANTED AND NO LIABILITY OF ERRORS OR OMISSIONS IS ASSURED BY EITHER THE PROPERTY OWNER OR VINTAGE REALTY COMPANY OR ITS AGENTS AND EMPLOYEES. PRICES AS STATED HEREIN AND PRODUCT AVAILABILITY IS SUBJECT TO CHANGE AND/OR SALE OR LEASE WITHOUT PRIOR NOTICE, AND ALL SIZES AND DIMENSIONS ARE SUBJECT TO CORRECTION. 6/2020

WILLIAMSBURG ATTRACTIVE OFFICE SPACE FOR LEASE

2020 E. 70TH STREET
SHREVEPORT, LA 71105

Schematic 2



3rd Floor



For More Information Contact:

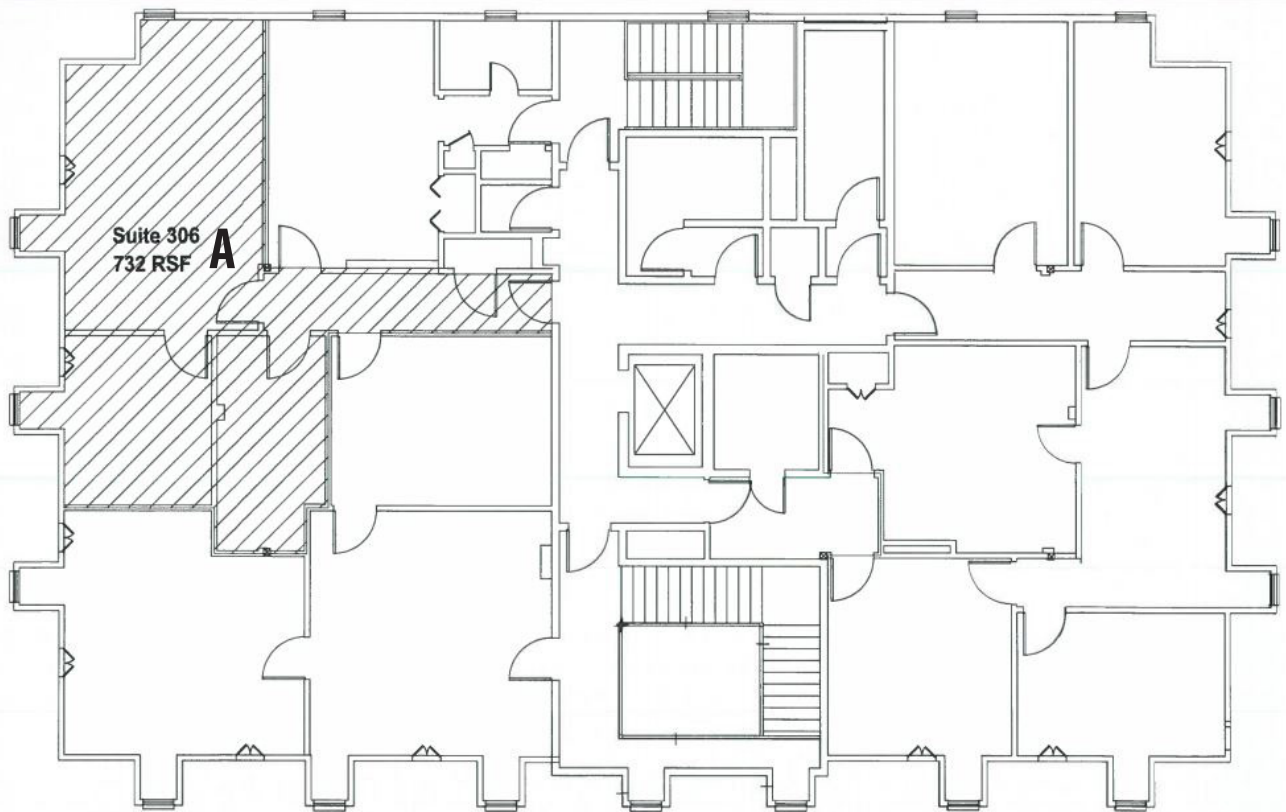
Michele Sauls, Associate Broker | 318-222-2244
msauls@vintagerealty.com | vintagerealty.com

ALL INFORMATION CONTAINED HEREIN IS BELIEVED TO BE ACCURATE, BUT IS NOT WARRANTED AND NO LIABILITY OF ERRORS OR OMISSIONS IS ASSURED BY EITHER THE PROPERTY OWNER OR VINTAGE REALTY COMPANY OR ITS AGENTS AND EMPLOYEES. PRICES AS STATED HEREIN AND PRODUCT AVAILABILITY IS SUBJECT TO CHANGE AND/OR SALE OR LEASE WITHOUT PRIOR NOTICE, AND ALL SIZES AND DIMENSIONS ARE SUBJECT TO CORRECTION. 6/2020

WILLIAMSBURG ATTRACTIVE OFFICE SPACE FOR LEASE

2020 E. 70TH STREET
SHREVEPORT, LA 71105

Schematic 3



3rd Floor



For More Information Contact:

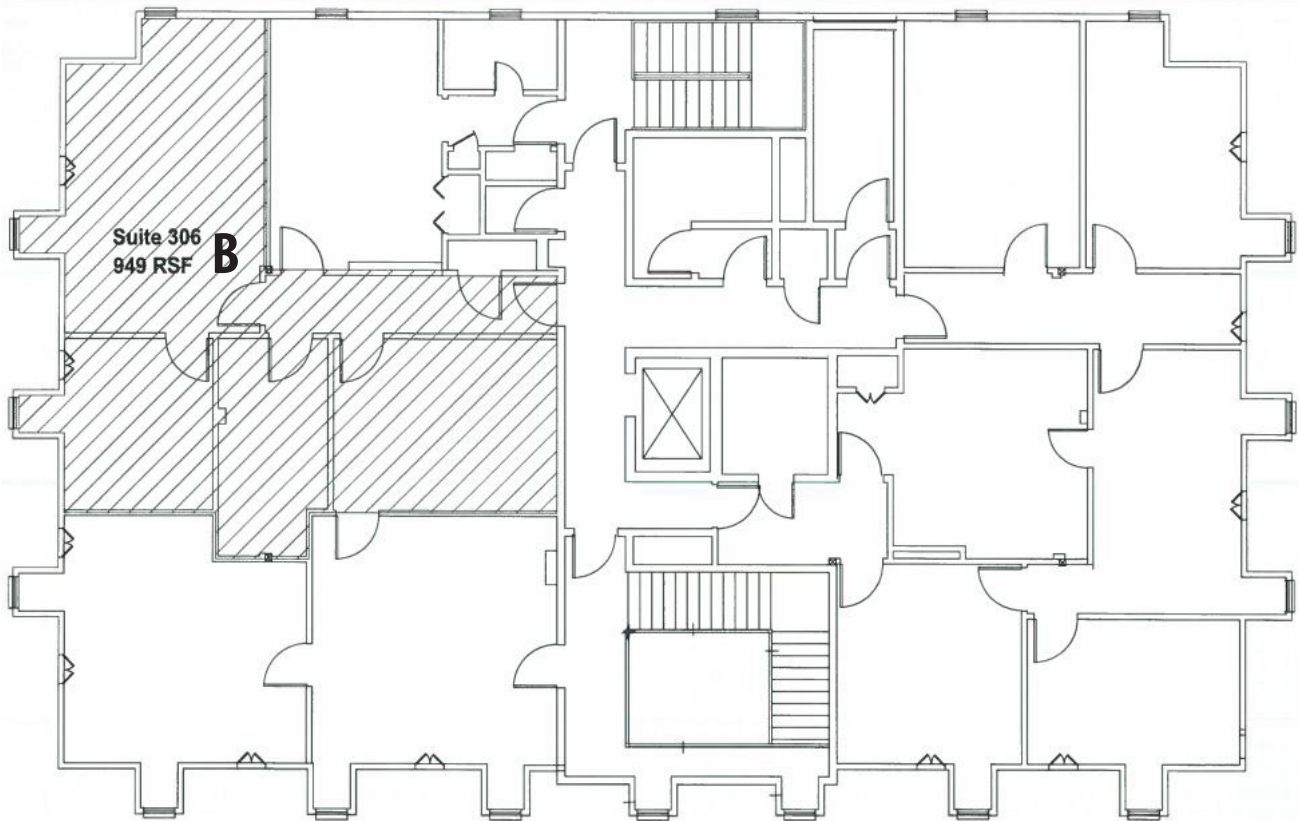
Michele Sauls, Associate Broker | 318-222-2244
msauls@vintagerealty.com | vintagerealty.com

ALL INFORMATION CONTAINED HEREIN IS BELIEVED TO BE ACCURATE, BUT IS NOT WARRANTED AND NO LIABILITY OF ERRORS OR OMISSIONS IS ASSURED BY EITHER THE PROPERTY OWNER OR VINTAGE REALTY COMPANY OR ITS AGENTS AND EMPLOYEES. PRICES AS STATED HEREIN AND PRODUCT AVAILABILITY IS SUBJECT TO CHANGE AND/OR SALE OR LEASE WITHOUT PRIOR NOTICE, AND ALL SIZES AND DIMENSIONS ARE SUBJECT TO CORRECTION. 6/2020

WILLIAMSBURG ATTRACTIVE OFFICE SPACE
FOR LEASE

2020 E. 70TH STREET
SHREVEPORT, LA 71105

Schematic 4



3rd Floor



For More Information Contact:

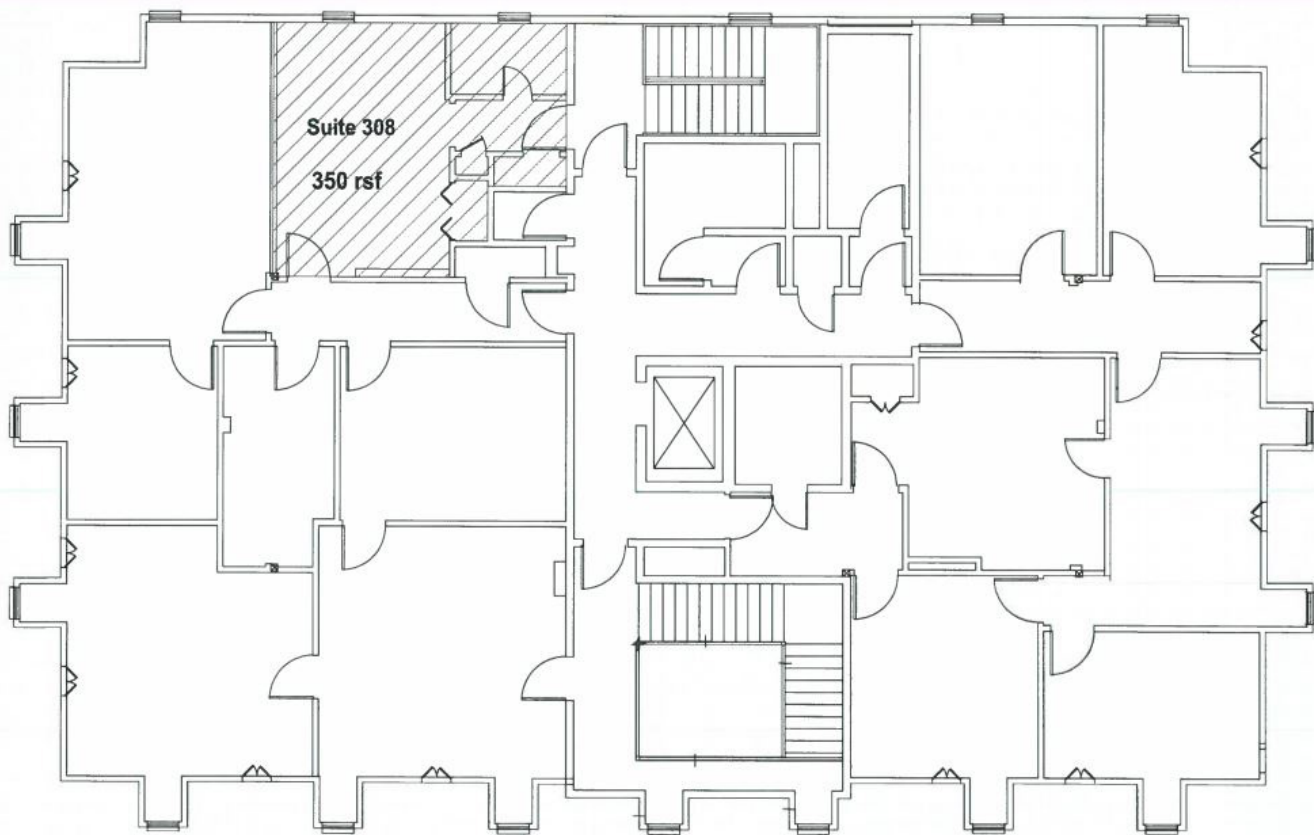
Michele Sauls, Associate Broker | 318-222-2244
msauls@vintagerealty.com | vintagerealty.com

ALL INFORMATION CONTAINED HEREIN IS BELIEVED TO BE ACCURATE, BUT IS NOT WARRANTED AND NO LIABILITY OF ERRORS OR OMISSIONS IS ASSURED BY EITHER THE PROPERTY OWNER OR VINTAGE REALTY COMPANY OR ITS AGENTS AND EMPLOYEES. PRICES AS STATED HEREIN AND PRODUCT AVAILABILITY IS SUBJECT TO CHANGE AND/OR SALE OR LEASE WITHOUT PRIOR NOTICE, AND ALL SIZES AND DIMENSIONS ARE SUBJECT TO CORRECTION. 6/2020

WILLIAMSBURG ATTRACTIVE OFFICE SPACE
FOR LEASE

2020 E. 70TH STREET
SHREVEPORT, LA 71105

Schematic 5



3rd Floor



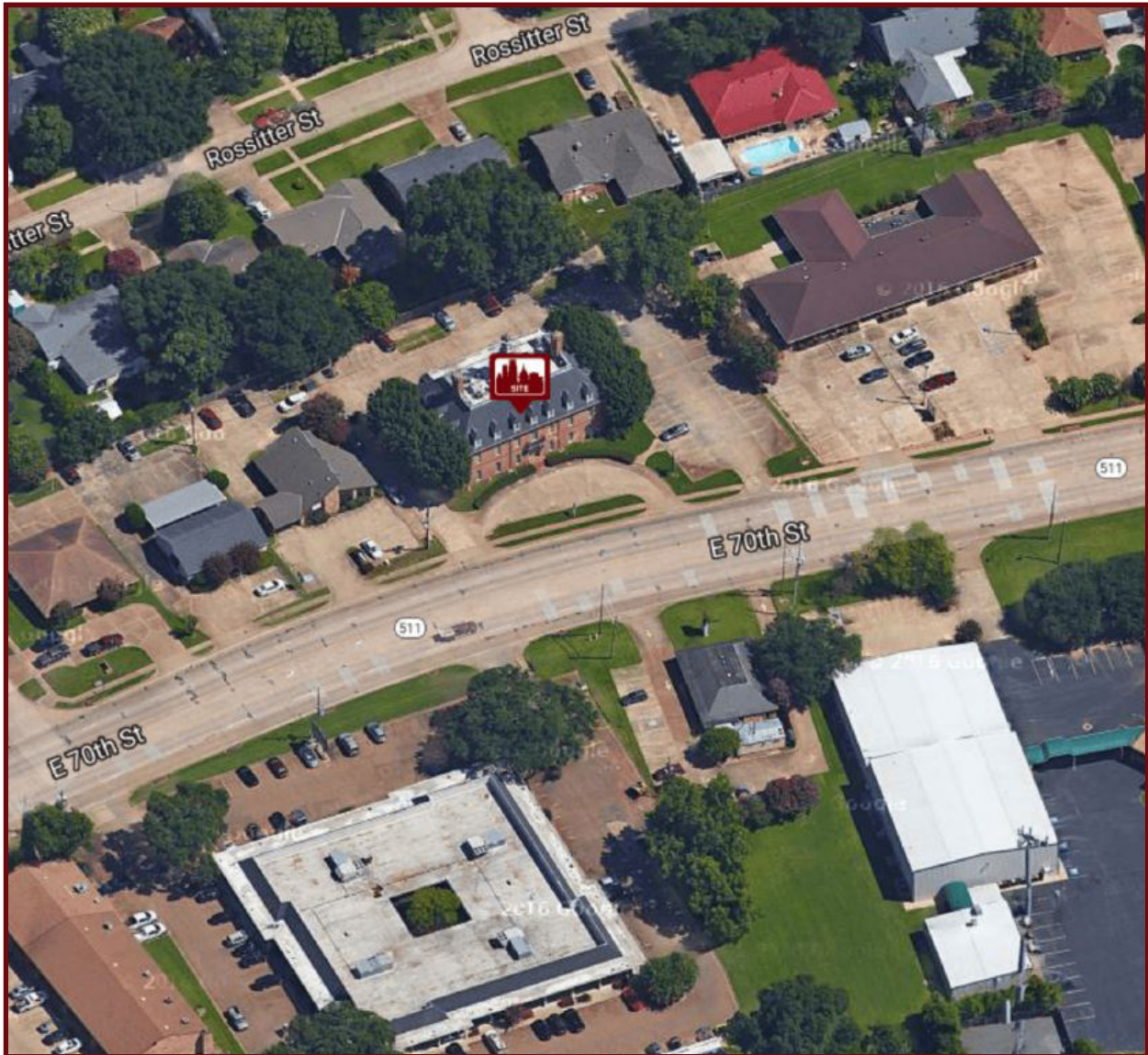
For More Information Contact:

Michele Sauls, Associate Broker | 318-222-2244
msauls@vintagerealty.com | vintagerealty.com

ALL INFORMATION CONTAINED HEREIN IS BELIEVED TO BE ACCURATE, BUT IS NOT WARRANTED AND NO LIABILITY OF ERRORS OR OMISSIONS IS ASSURED BY EITHER THE PROPERTY OWNER OR VINTAGE REALTY COMPANY OR ITS AGENTS AND EMPLOYEES. PRICES AS STATED HEREIN AND PRODUCT AVAILABILITY IS SUBJECT TO CHANGE AND/OR SALE OR LEASE WITHOUT PRIOR NOTICE, AND ALL SIZES AND DIMENSIONS ARE SUBJECT TO CORRECTION. 6/2020

WILLIAMSBURG ATTRACTIVE OFFICE SPACE FOR LEASE

2020 E. 70TH STREET
SHREVEPORT, LA 71105



For More Information Contact:

Michele Sauls, Associate Broker | 318-222-2244
msauls@vintagerealty.com | vintagerealty.com

ALL INFORMATION CONTAINED HEREIN IS BELIEVED TO BE ACCURATE, BUT IS NOT WARRANTED AND NO LIABILITY OF ERRORS OR OMISSIONS IS ASSURED BY EITHER THE PROPERTY OWNER OR VINTAGE REALTY COMPANY OR ITS AGENTS AND EMPLOYEES. PRICES AS STATED HEREIN AND PRODUCT AVAILABILITY IS SUBJECT TO CHANGE AND/OR SALE OR LEASE WITHOUT PRIOR NOTICE, AND ALL SIZES AND DIMENSIONS ARE SUBJECT TO CORRECTION. 6/2020