



## OVERVIEW

West side office with great mountain views! Suite 200 has 6 offices, a conference room, a large open reception area and plenty of on-site parking. The property is situated in the quiet and covenant-controlled Broadmarket Square on South 8th Street. With quick access to the Broadmoor and just minutes from I-25 and downtown, via 8th and Cimarron, this building is well located. The building is well maintained and managed.

For a private showing and all the financial details, call Steve Leigh at 719-630-2277.

## HIGHLIGHTS

- 8th Street & Cheyenne Boulevard
- Great Mountain Views
- Ample Parking
- Recently Upgraded
- Quick Access to the Broadmoor
- Minutes from I-25 and Downtown

**Suite:**

Suite 200

**Available SF:**

1,767 SF

**Lease Rate:**

\$1,700 /Month (MG)

## OUR NETWORK IS YOUR EDGE.

All information is from sources deemed reliable and is subject to errors, omissions, change of price, rental, prior sale, and withdrawal without notice. Prospect should carefully verify each item of information contained herein.

**Steve Leigh**

O: 719.630.2277

C: 719.338.4470

steve@hoffleigh.com



# 1765 SOUTH 8TH STREET

Colorado Springs, CO 80905



## OUR NETWORK IS YOUR EDGE.

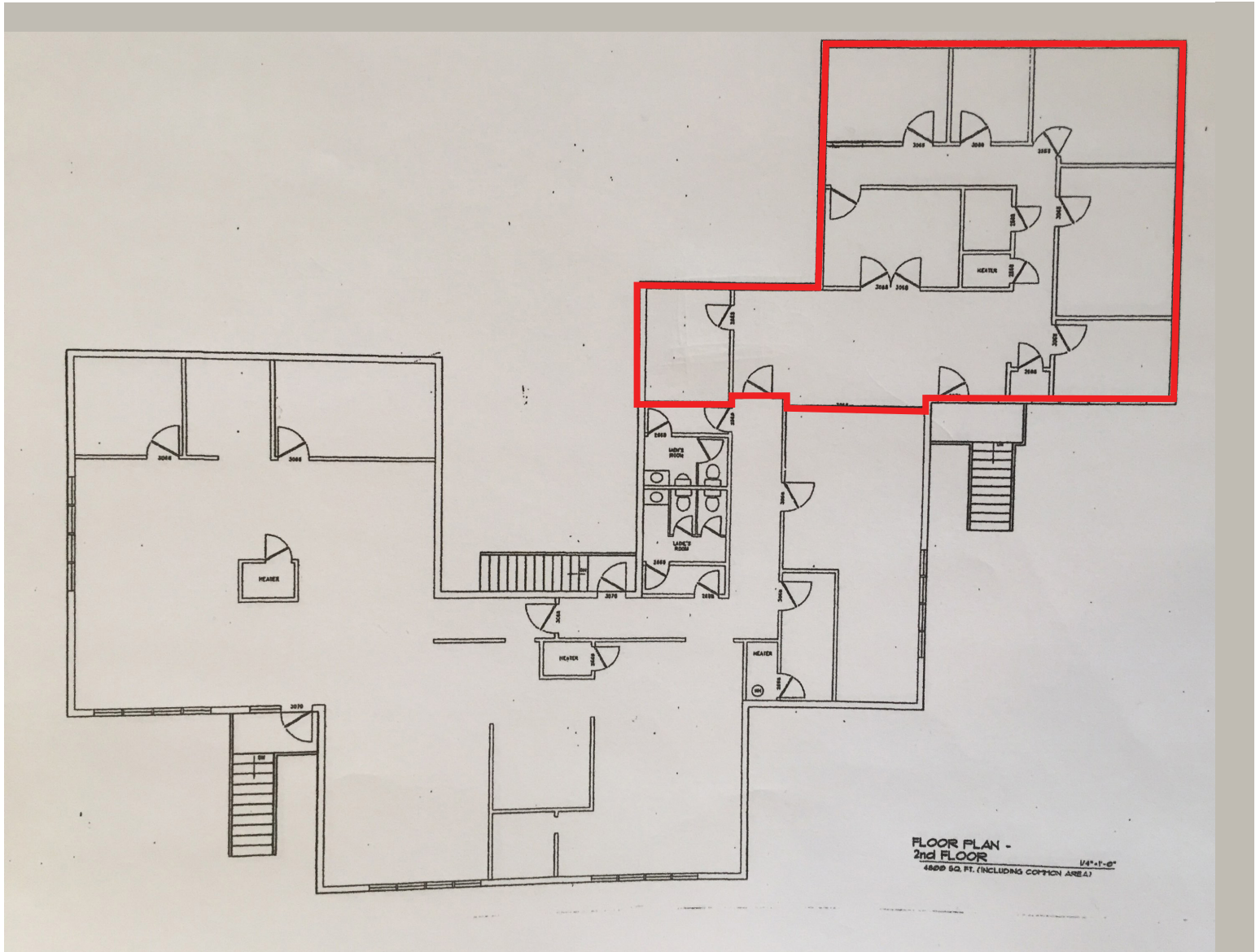
All information is from sources deemed reliable and is subject to errors, omissions, change of price, rental, prior sale, and withdrawal without notice. Prospect should carefully verify each item of information contained herein.

**Steve Leigh**

O: 719.630.2277

C: 719.338.4470

[steve@hoffleigh.com](mailto:steve@hoffleigh.com)



## OUR NETWORK IS YOUR EDGE.

All information is from sources deemed reliable and is subject to errors, omissions, change of price, rental, prior sale, and withdrawal without notice. Prospect should carefully verify each item of information contained herein.

**Steve Leigh**

O: 719.630.2277

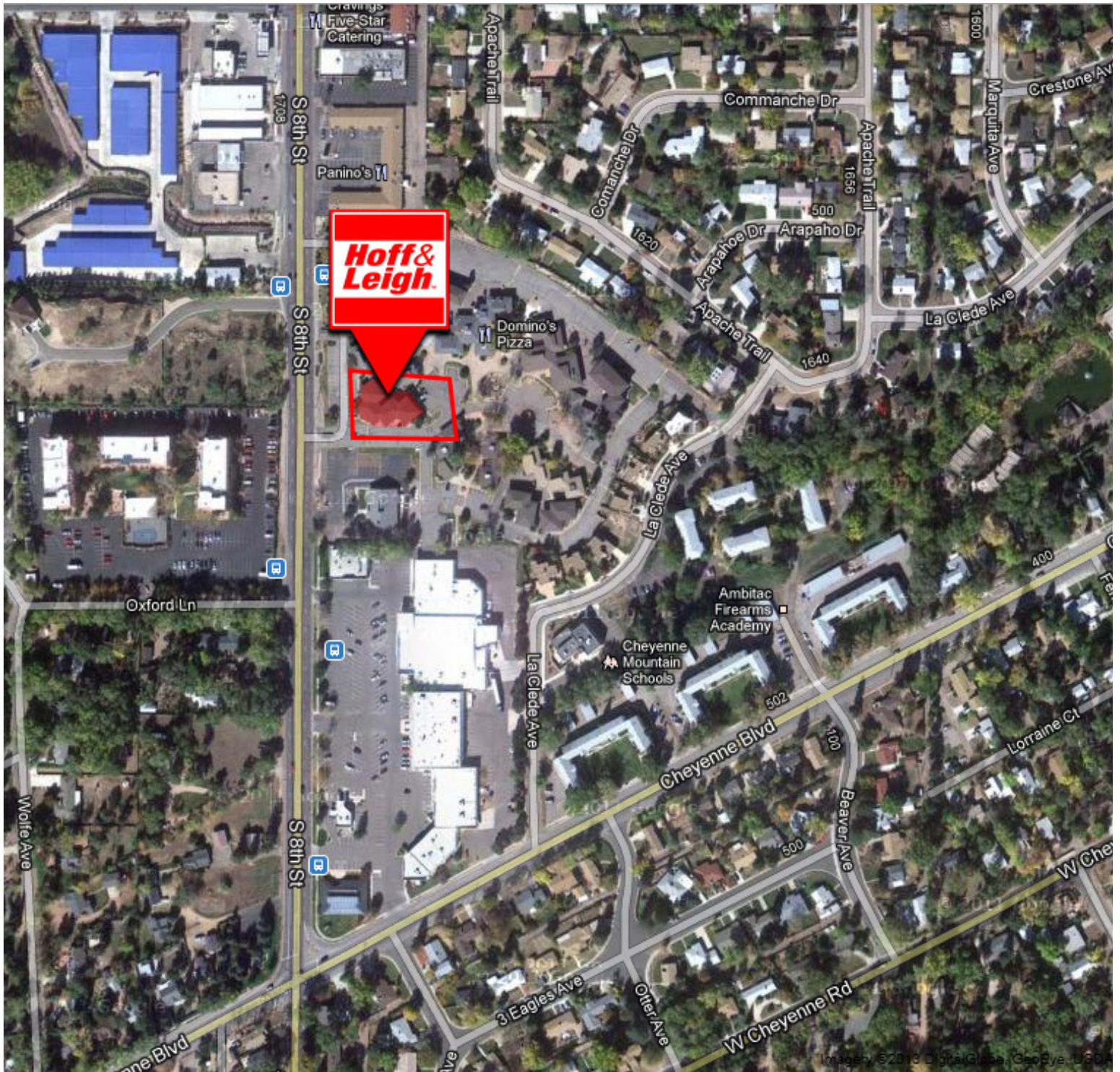
C: 719.338.4470

steve@hoffleigh.com



# 1765 SOUTH 8TH STREET

Colorado Springs, CO 80905



## OUR NETWORK IS YOUR EDGE.

All information is from sources deemed reliable and is subject to errors, omissions, change of price, rental, prior sale, and withdrawal without notice. Prospect should carefully verify each item of information contained herein.

**Steve Leigh**

O: 719.630.2277

C: 719.338.4470

[steve@hoffleigh.com](mailto:steve@hoffleigh.com)