

# FORMER RITE-AID PROPERTY FOR LEASE

1047 Kenmore Blvd, Akron, OH 44314



## OVERVIEW

Freestanding 7,800 sq. ft. former Rite-Aid store available for lease. Ideal for several uses, such as: retail, fitness facility, office space, religious, and more. Located on high traffic street in downtown Kenmore in front of Family Dollar and Subway. This freestanding building comes with pylon signage on newly renovated Kenmore Blvd. Excellent highway access from three directions.

## HIGHLIGHTS

- High Traffic Street
- Freestanding Building
- Pylon Signage
- 21,000 Residents in Primary Market Area
- Excellent Highway Access from 3 Directions
- New Library Nearby



### Lease Rate:

\$9.50 SF/YR (Net)



### Building Size:

7,800 SF



### Lot Size:

0.51 Acres



### Zoning:

Retail

## OUR NETWORK IS YOUR EDGE.

All information is from sources deemed reliable and is subject to errors, omissions, change of price, rental, prior sale, and withdrawal without notice. Prospect should carefully verify each item of information contained herein.

**Jennifer Fernandez, CCIM, SIOR**

O: 330.940.9360

C: 330.573.5933

[jfernandez@hoffleigh.com](mailto:jfernandez@hoffleigh.com)

**Jeff Davis**

O: 330.940.9360

C: 330.351.5202

[jdavis@hoffleigh.com](mailto:jdavis@hoffleigh.com)

**Ed Jesson**

O: 330.940.9360

C: 330.760.4494

[ejsson@hoffleigh.com](mailto:ejsson@hoffleigh.com)



# FORMER RITE-AID PROPERTY FOR LEASE

1047 Kenmore Blvd, Akron, OH 44314



## OUR NETWORK IS YOUR EDGE.

All information is from sources deemed reliable and is subject to errors, omissions, change of price, rental, prior sale, and withdrawal without notice. Prospect should carefully verify each item of information contained herein.

**Jennifer Fernandez, CCIM, SIOR**

O: 330.940.9360

C: 330.573.5933

[jfernandez@hoffleigh.com](mailto:jfernandez@hoffleigh.com)

**Jeff Davis**

O: 330.940.9360

C: 330.351.5202

[jdavis@hoffleigh.com](mailto:jdavis@hoffleigh.com)

**Ed Jesson**

O: 330.940.9360

C: 330.760.4494

[ejsson@hoffleigh.com](mailto:ejsson@hoffleigh.com)



# FORMER RITE-AID PROPERTY FOR LEASE

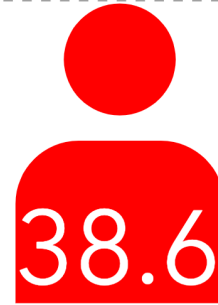
1047 Kenmore Blvd, Akron, OH 44314

1047 Kenmore Blvd, Akron, Ohio, 44314

## DEMOGRAPHICS



76,743  
Population



38.6  
Median Age



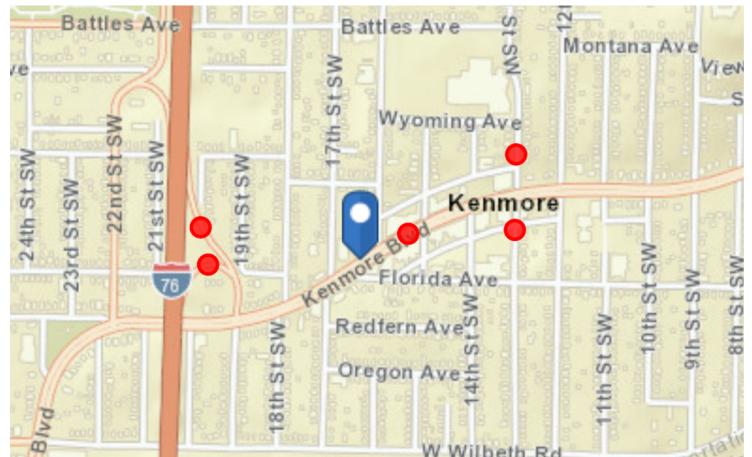
2.4  
Average Household Size



\$35,951  
Median Household Income

## TRAFFIC COUNT

Cross street	Traffic 1	Distance
15th St SW	9,804	0.1
Kenmore Blvd	1,655	0.2
Kenmore Blvd	607	0.2
Harpster Ave	2,442	0.2
Wyoming Ave	2,638	0.2



### OUR NETWORK IS YOUR EDGE.

All information is from sources deemed reliable and is subject to errors, omissions, change of price, rental, prior sale, and withdrawal without notice. Prospect should carefully verify each item of information contained herein.

**Jennifer Fernandez, CCIM, SIOR**

O: 330.940.9360

C: 330.573.5933

[jfernandez@hoffleigh.com](mailto:jfernandez@hoffleigh.com)

**Jeff Davis**

O: 330.940.9360

C: 330.351.5202

[jdavis@hoffleigh.com](mailto:jdavis@hoffleigh.com)

**Ed Jesson**

O: 330.940.9360

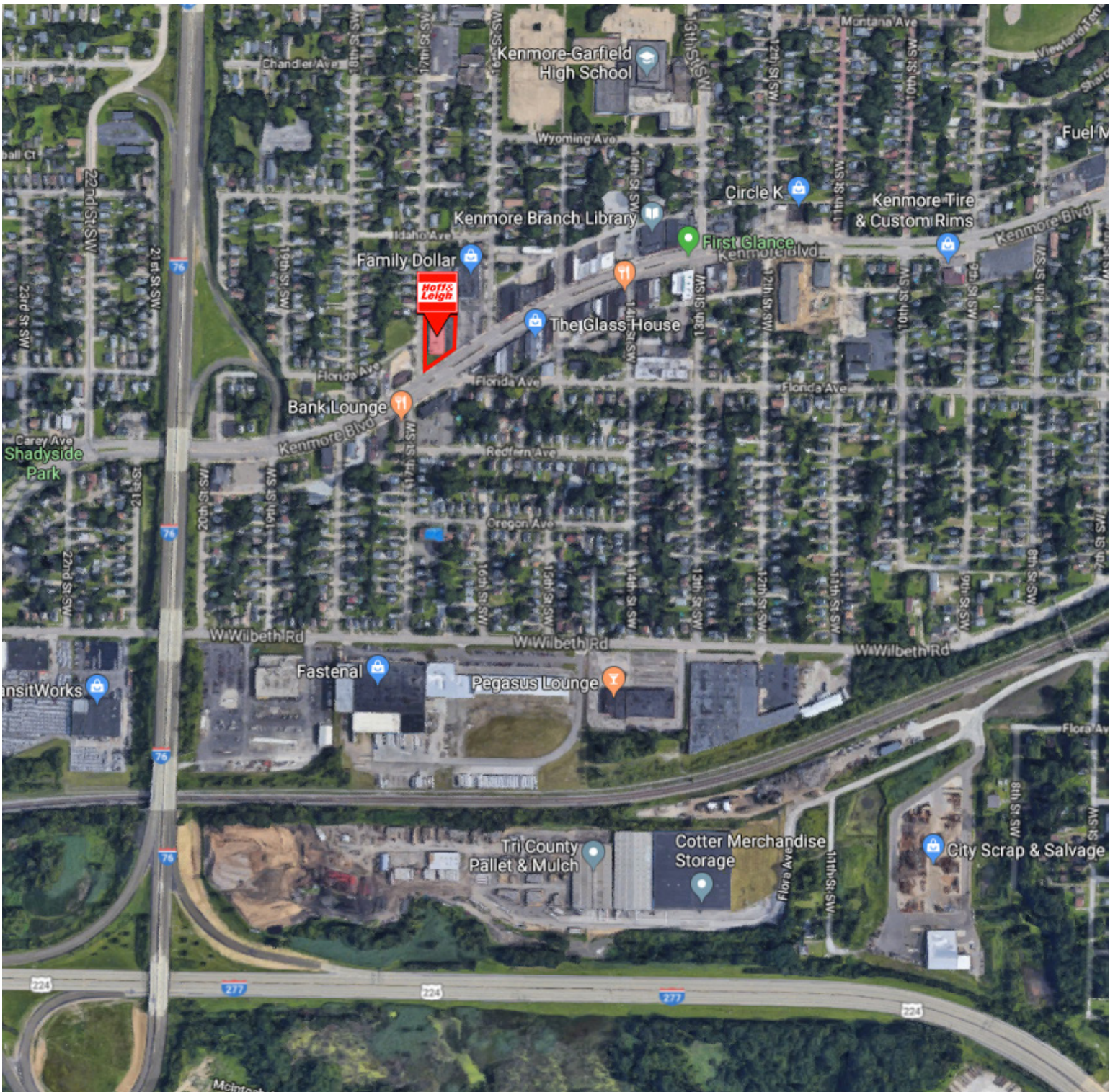
C: 330.760.4494

[ejsson@hoffleigh.com](mailto:ejsson@hoffleigh.com)



# FORMER RITE-AID PROPERTY FOR LEASE

1047 Kenmore Blvd, Akron, OH 44314



## OUR NETWORK IS YOUR EDGE.

All information is from sources deemed reliable and is subject to errors, omissions, change of price, rental, prior sale, and withdrawal without notice. Prospect should carefully verify each item of information contained herein.

**Jennifer Fernandez, CCIM, SIOR**

O: 330.940.9360

C: 330.573.5933

[jfernandez@hoffleigh.com](mailto:jfernandez@hoffleigh.com)

**Jeff Davis**

O: 330.940.9360

C: 330.351.5202

[jdavis@hoffleigh.com](mailto:jdavis@hoffleigh.com)

**Ed Jesson**

O: 330.940.9360

C: 330.760.4494

[ejsson@hoffleigh.com](mailto:ejsson@hoffleigh.com)