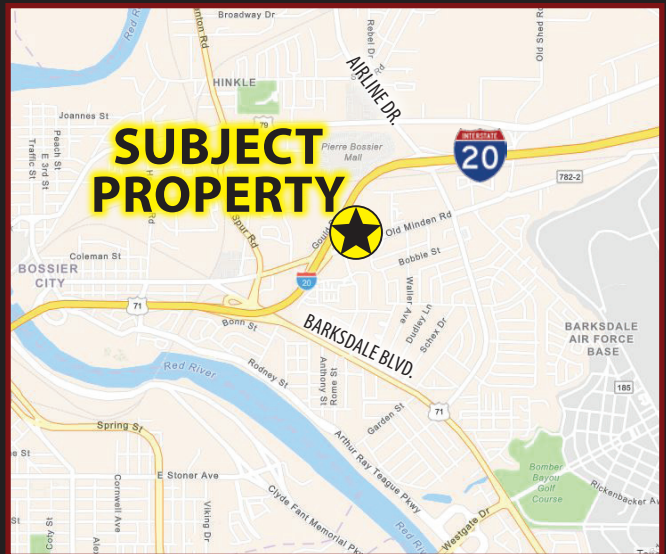




# CENTROPLEX BUILDING A FOR LEASE

2223 OLD MINDEN ROAD, BOSSIER CITY, LA 71112

- Office/Retail space for lease
- 625 square feet
- Excellent visibility for signage
- Centrally located with great access to I-20 and major traffic corridors
- Daily traffic count on Old Minden Road 18,000+ vehicles



## 2020 DEMOGRAPHICS

Radius	Population	Avg HH Income	Households
1 mile	10,380	\$41,424	4,631
3 mile	53,062	\$47,719	21,886
5 mile	116,770	\$60,971	47,865

For more information, contact:

**Michele Sauls, Associate Broker | 318.222.2244**  
**msauls@vintagerealty.com | vintagerealty.com**

ALL INFORMATION CONTAINED HEREIN IS BELIEVED TO BE ACCURATE, BUT IS NOT WARRANTED AND NO LIABILITY OF ERRORS OR OMISSIONS IS ASSURED BY EITHER THE PROPERTY OWNER OR VINTAGE REALTY COMPANY OR ITS AGENTS AND EMPLOYEES. PRICES AS STATED HEREIN AND PRODUCT AVAILABILITY IS SUBJECT TO CHANGE AND/OR SALE OR LEASE WITHOUT PRIOR NOTICE, AND ALL SIZES AND DIMENSIONS ARE SUBJECT TO CORRECTION. REV 3/2021



# CENTROPLEX - BUILDING A FOR LEASE

2223 OLD MINDEN ROAD  
BOSSIER CITY, LA 71112



## PROXIMITY TO POINTS OF INTEREST

- I-20 0.2 mi.
- City Hall 1.4 mi.
- Pierre Bossier Mall 1.4 mi.
- Barksdale Air Force Base 1.9 mi.
- Bossier Parish Community College 3.9 mi.



For More Information Contact:

**Michele Sauls, Associate Broker | 318-222-2244**  
[msauls@vintagerealty.com](mailto:msauls@vintagerealty.com) | [vintagerealty.com](http://vintagerealty.com)

ALL INFORMATION CONTAINED HEREIN IS BELIEVED TO BE ACCURATE, BUT IS NOT WARRANTED AND NO LIABILITY OF ERRORS OR OMISSIONS IS ASSURED BY EITHER THE PROPERTY OWNER OR VINTAGE REALTY COMPANY OR ITS AGENTS AND EMPLOYEES. PRICES AS STATED HEREIN AND PRODUCT AVAILABILITY IS SUBJECT TO CHANGE AND/OR SALE OR LEASE WITHOUT PRIOR NOTICE, AND ALL SIZES AND DIMENSIONS ARE SUBJECT TO CORRECTION. 3/2021

# CENTROPLEX - BUILDING A FOR LEASE

2223 OLD MINDEN ROAD  
BOSSIER CITY, LA 71112



For More Information Contact:

**Michele Sauls, Associate Broker | 318-222-2244**  
[msauls@vintagerealty.com](mailto:msauls@vintagerealty.com) | [vintagerealty.com](http://vintagerealty.com)

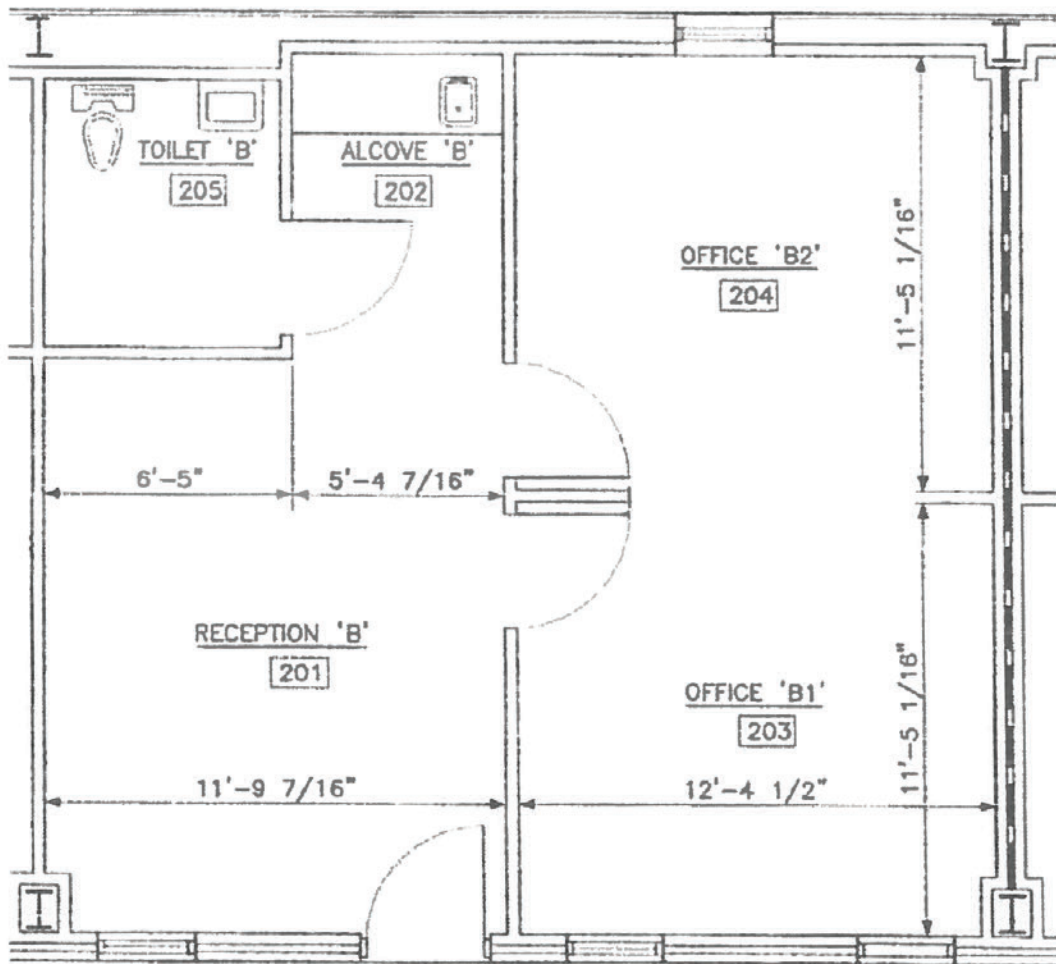
ALL INFORMATION CONTAINED HEREIN IS BELIEVED TO BE ACCURATE, BUT IS NOT WARRANTED AND NO LIABILITY OF ERRORS OR OMISSIONS IS ASSURED BY EITHER THE PROPERTY OWNER OR VINTAGE REALTY COMPANY OR ITS AGENTS AND EMPLOYEES. PRICES AS STATED HEREIN AND PRODUCT AVAILABILITY IS SUBJECT TO CHANGE AND/OR SALE OR LEASE WITHOUT PRIOR NOTICE, AND ALL SIZES AND DIMENSIONS ARE SUBJECT TO CORRECTION. 3/2021

# CENTROPLEX - BUILDING A FOR LEASE

2223 OLD MINDEN ROAD  
BOSSIER CITY, LA 71112

## Current Layout of Space

**SUITE A2 - 625 SQUARE FEET**



For More Information Contact:

**Michele Sauls, Associate Broker | 318-222-2244**  
[msauls@vintagerealty.com](mailto:msauls@vintagerealty.com) | [vintagerealty.com](http://vintagerealty.com)

ALL INFORMATION CONTAINED HEREIN IS BELIEVED TO BE ACCURATE, BUT IS NOT WARRANTED AND NO LIABILITY OF ERRORS OR OMISSIONS IS ASSURED BY EITHER THE PROPERTY OWNER OR VINTAGE REALTY COMPANY OR ITS AGENTS AND EMPLOYEES. PRICES AS STATED HEREIN AND PRODUCT AVAILABILITY IS SUBJECT TO CHANGE AND/OR SALE OR LEASE WITHOUT PRIOR NOTICE, AND ALL SIZES AND DIMENSIONS ARE SUBJECT TO CORRECTION. 3/2021