

FOR SALE

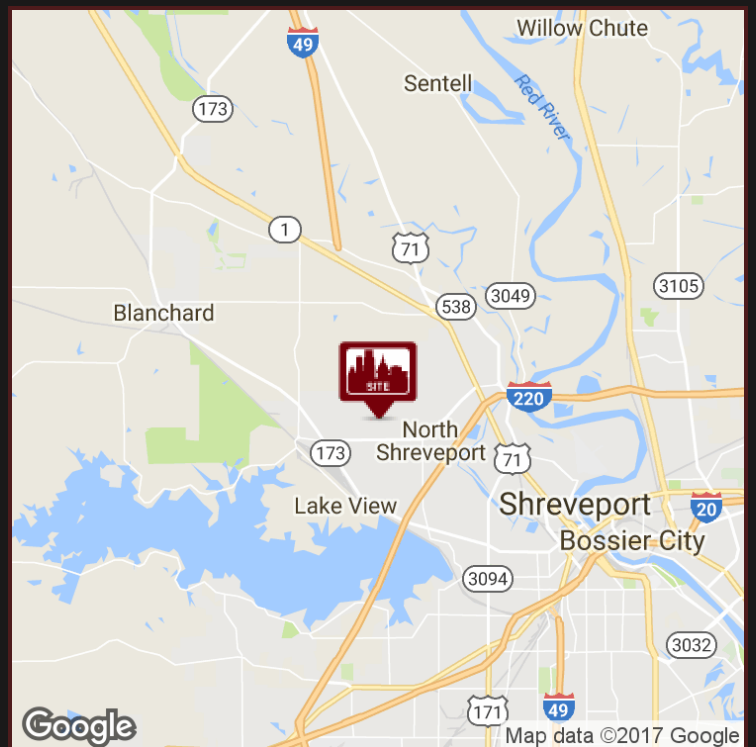
RESIDENTIAL DEVELOPMENT LAND AVAILABLE

2710 FREDDIE STREET, SHREVEPORT, LA 71107



PROPERTY HIGHLIGHTS

- Two (2) Acres Available
- \$15,000 an Acre
- Located Less Than a Mile from Green Oaks High School
- Close Proximity to Southern University - Shreveport
- Area Qualifies for Tax Credit Housing



DEMOGRAPHICS	1 Mile	3 Miles	5 Miles
Total Households:	1,548	6,481	17,419
Total Population:	4,664	18,884	45,269
Average HH Income:	\$30,861	\$46,661	\$46,938

For More Information, Contact:

Kendall Demouchet

O: 318.212.1648

C: 337.412.3388

kdemouchet@vintagerealty.com

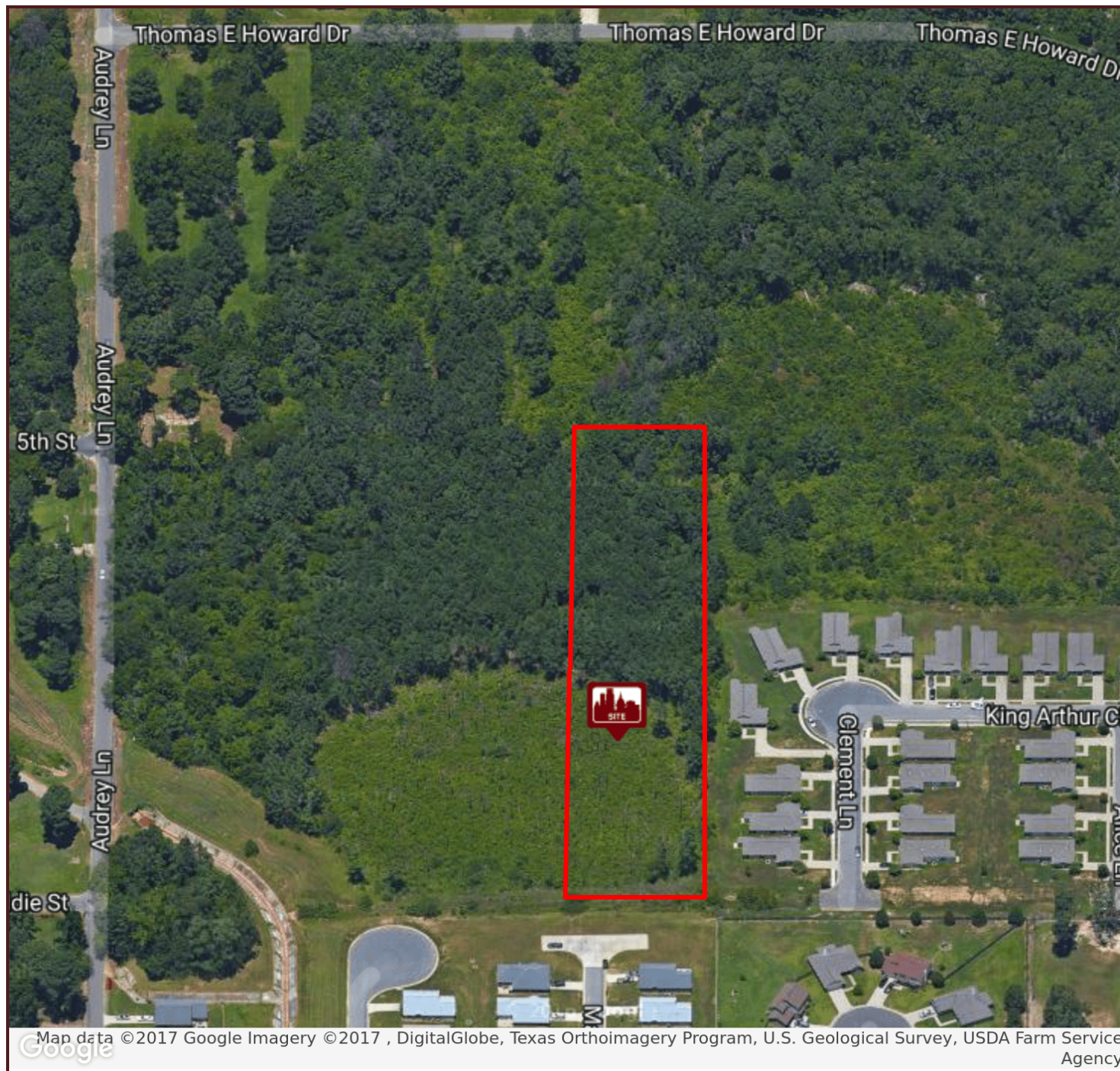
All Information Contained Herein Is Believed To Be Accurate, But Is Not Warranted And No Liability Of Errors Or Omissions Is Assured By Either The Property Owner Or Vintage Realty Company Or Its Agents And Employees. Prices As Stated Herein And Product Availability Is Subject To Change And/Or Sale Or Lease Without Prior Notice, And All Sizes And Dimensions Are Subject To Correction.
Rev 09/2017



FOR SALE

RESIDENTIAL DEVELOPMENT LAND AVAILABLE

2710 FREDDIE STREET, SHREVEPORT, LA 71107



For More Information, Contact:

Kendall Demouchet

O: 318.212.1648

C: 337.412.3388

kdemouchet@vintagerealty.com

All Information Contained Herein Is Believed To Be Accurate, But Is Not Warranted And No Liability Of Errors Or Omissions Is Assured By Either The Property Owner Or Vintage Realty Company Or Its Agents And Employees. Prices As Stated Herein And Product Availability Is Subject To Change And/Or Sale Or Lease Without Prior Notice, And All Sizes And Dimensions Are Subject To Correction.
Rev 09/2017

VINTAGE
REALTY COMPANY
318.222.2244

FOR SALE

RESIDENTIAL DEVELOPMENT LAND AVAILABLE

2710 FREDDIE STREET, SHREVEPORT, LA 71107



For More Information, Contact:

Kendall Demouchet

O: 318.212.1648

C: 337.412.3388

kdemouchet@vintagerealty.com

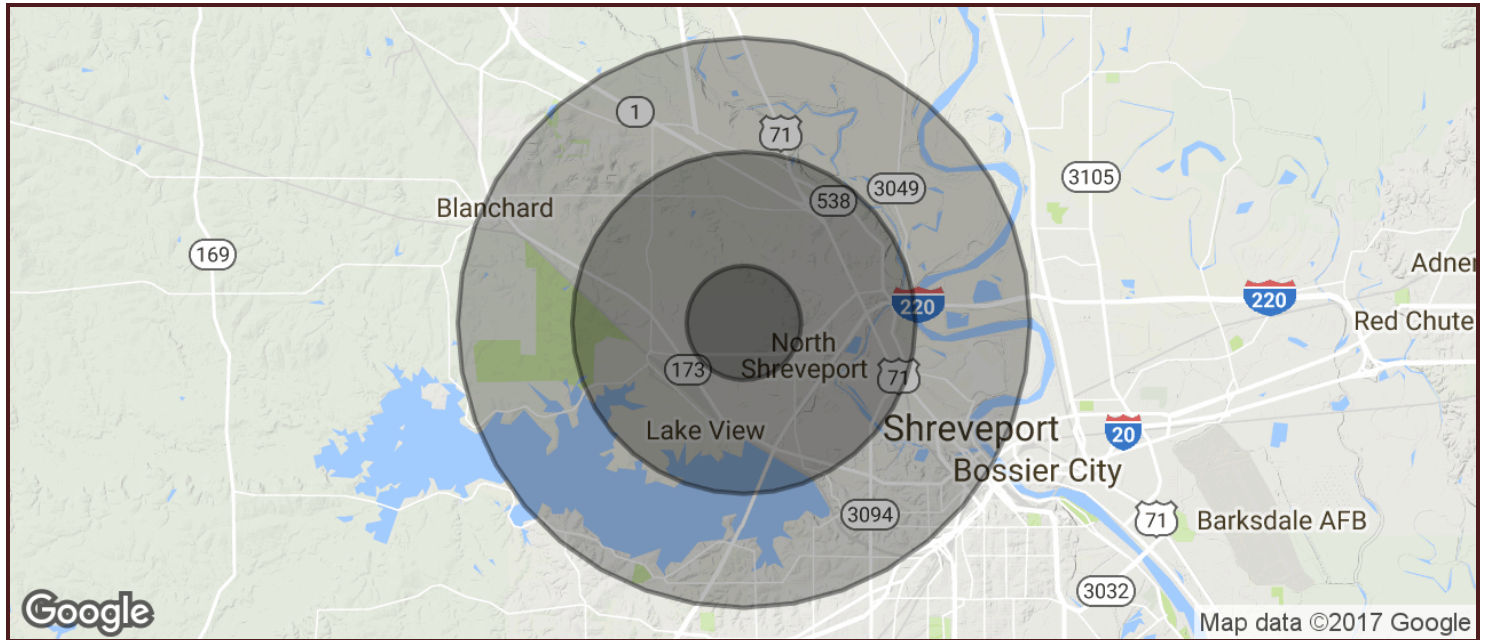
All Information Contained Herein Is Believed To Be Accurate, But Is Not Warranted And No Liability Of Errors Or Omissions Is Assured By Either The Property Owner Or Vintage Realty Company Or Its Agents And Employees. Prices As Stated Herein And Product Availability Is Subject To Change And/Or Sale Or Lease Without Prior Notice, And All Sizes And Dimensions Are Subject To Correction.
Rev 09/2017



FOR SALE

RESIDENTIAL DEVELOPMENT LAND AVAILABLE

2710 FREDDIE STREET, SHREVEPORT, LA 71107



POPULATION	1 MILE	3 MILES	5 MILES
TOTAL POPULATION	4,664	18,884	45,269
MEDIAN AGE	25.2	29.9	34.0
MEDIAN AGE (MALE)	23.2	28.4	31.6
MEDIAN AGE (FEMALE)	26.1	31.1	35.9

HOUSEHOLDS & INCOME	1 MILE	3 MILES	5 MILES
TOTAL HOUSEHOLDS	1,548	6,481	17,419
# OF PERSONS PER HH	3.3	3.1	2.7
AVERAGE HH INCOME	\$30,861	\$46,661	\$46,938
AVERAGE HOUSE VALUE	\$85,024	\$94,856	\$97,215

* Demographic data derived from 2010 US Census

For More Information, Contact:

Kendall Demouchet

O: 318.212.1648

C: 337.412.3388

kdemouchet@vintagerealty.com

All Information Contained Herein Is Believed To Be Accurate, But Is Not Warranted And No Liability Of Errors Or Omissions Is Assured By Either The Property Owner Or Vintage Realty Company Or Its Agents And Employees. Prices As Stated Herein And Product Availability Is Subject To Change And/Or Sale Or Lease Without Prior Notice, And All Sizes And Dimensions Are Subject To Correction.
Rev 09/2017

