



CLASS A MEDICAL OFFICE FOR LEASE

8711 LINE AVENUE, SHREVEPORT, LA 71106

AVAILABLE FOR LEASE

- 2,162 square feet (included 884 sq ft of common area, reception, waiting room, break room, & 2 restrooms)
- \$21.00/sf NNN (\$3,783.50 per month)
- 2 exam rooms
- 1 consult room/exam room
- Nurses Station
- Physicians Office with private restroom
- Covered parking with private Physician/Nurse entrance
- Zoned C-2



For more information, contact:

Michael Berlin, Associate Broker | 318-222-2244
mberlin@vintagerealty.com | vintagerealty.com



ALL INFORMATION CONTAINED HEREIN IS BELIEVED TO BE ACCURATE, BUT IS NOT WARRANTED AND NO LIABILITY OF ERRORS OR OMISSIONS IS ASSURED BY EITHER THE PROPERTY OWNER OR VINTAGE REALTY COMPANY OR ITS AGENTS AND EMPLOYEES. PRICES AS STATED HEREIN AND PRODUCT AVAILABILITY IS SUBJECT TO CHANGE AND/OR SALE OR LEASE WITHOUT PRIOR NOTICE, AND ALL SIZES AND DIMENSIONS ARE SUBJECT TO CORRECTION. REV 10/2019

CLASS A MEDICAL OFFICE FOR LEASE

8711 LINE AVENUE
SHREVEPORT, LA 71106



Michael Berlin, Associate Broker | 318-222-2244
mberlin@vintagerealty.com | vintagerealty.com

ALL INFORMATION CONTAINED HEREIN IS BELIEVED TO BE ACCURATE, BUT IS NOT WARRANTED AND NO LIABILITY OF ERRORS OR OMISSIONS IS ASSURED BY EITHER THE PROPERTY OWNER OR VINTAGE REALTY COMPANY OR ITS AGENTS AND EMPLOYEES. PRICES AS STATED HEREIN AND PRODUCT AVAILABILITY IS SUBJECT TO CHANGE AND/OR SALE OR LEASE WITHOUT PRIOR NOTICE, AND ALL SIZES AND DIMENSIONS ARE SUBJECT TO CORRECTION. 10/2019

CLASS A MEDICAL OFFICE FOR LEASE

8711 LINE AVENUE
SHREVEPORT, LA 71106



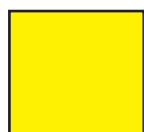
Michael Berlin, Associate Broker | 318-222-2244
mberlin@vintagerealty.com | vintagerealty.com

ALL INFORMATION CONTAINED HEREIN IS BELIEVED TO BE ACCURATE, BUT IS NOT WARRANTED AND NO LIABILITY OF ERRORS OR OMISSIONS IS ASSURED BY EITHER THE PROPERTY OWNER OR VINTAGE REALTY COMPANY OR ITS AGENTS AND EMPLOYEES. PRICES AS STATED HEREIN AND PRODUCT AVAILABILITY IS SUBJECT TO CHANGE AND/OR SALE OR LEASE WITHOUT PRIOR NOTICE, AND ALL SIZES AND DIMENSIONS ARE SUBJECT TO CORRECTION. 10/2019

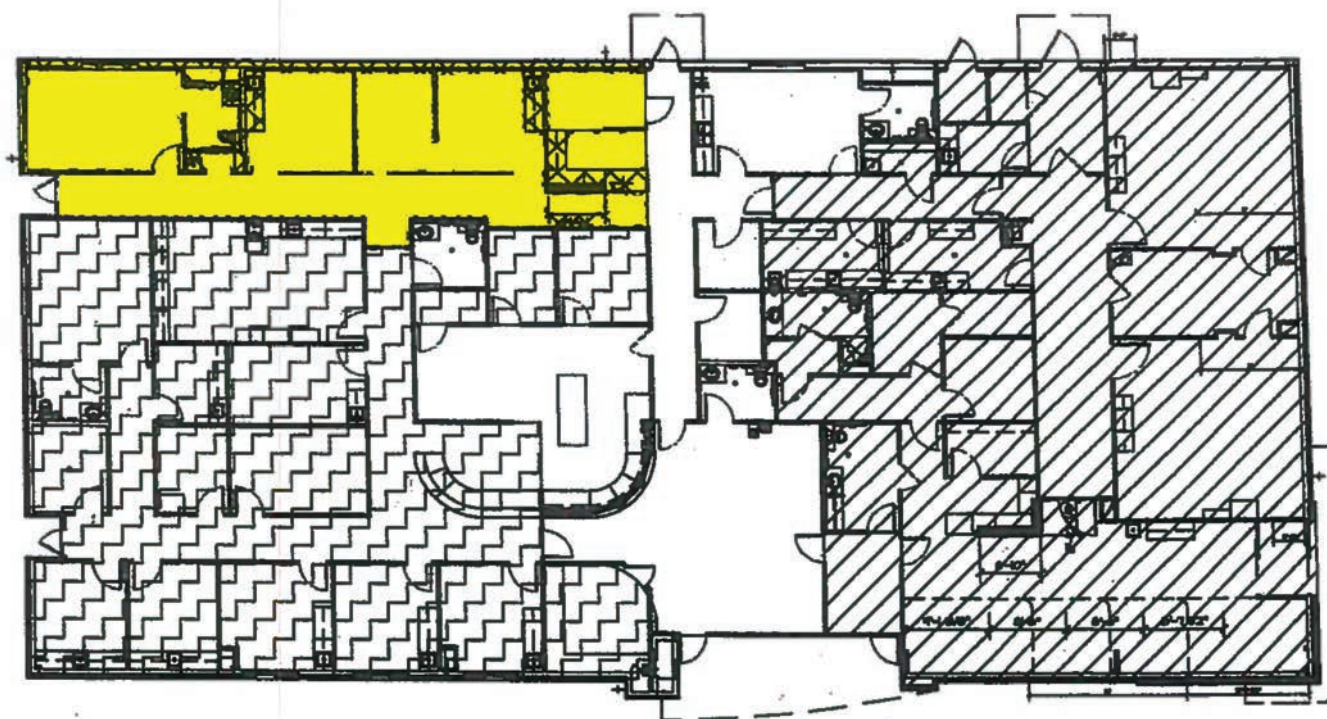
CLASS A MEDICAL OFFICE FOR LEASE

8711 LINE AVENUE
SHREVEPORT, LA 71106

FLOOR PLAN



AVAILABLE



Michael Berlin, Associate Broker | 318-222-2244
mberlin@vintagerealty.com | vintagerealty.com

ALL INFORMATION CONTAINED HEREIN IS BELIEVED TO BE ACCURATE, BUT IS NOT WARRANTED AND NO LIABILITY OF ERRORS OR OMISSIONS IS ASSURED BY EITHER THE PROPERTY OWNER OR VINTAGE REALTY COMPANY OR ITS AGENTS AND EMPLOYEES. PRICES AS STATED HEREIN AND PRODUCT AVAILABILITY IS SUBJECT TO CHANGE AND/OR SALE OR LEASE WITHOUT PRIOR NOTICE, AND ALL SIZES AND DIMENSIONS ARE SUBJECT TO CORRECTION. 10/2019