

FOR LEASE

Baltimore County, MD

CHARLESWOOD BUILDING

8422 BELLONA LANE | TOWSON, MARYLAND, 21204

AVAILABLE

Suite 200: 2,000 sf

Suite 207: 1,100 sf (Available 5/1/21)

TERM

Negotiable

PARKING RATIO

4 : 1,000 sf

OCCUPANCY

Immediate

HIGHLIGHTS

- ▶ Excellent visibility and access
- ▶ Located at the triangle of I-83, I-695, and Charles Street
- ▶ Minutes from downtown Towson and downtown Baltimore
- ▶ Near major restaurants, Towson Town Center and the Shops at Kenilworth
- ▶ Elevator served



Bill Whitty

☎ 410.494.4862

✉ bwhitty@mackenziecommercial.com

Henson Ford

☎ 410.494.6657

✉ hford@mackenziecommercial.com

Matt Mueller

☎ 410.494.6658

✉ mmueller@mackenziecommercial.com

Joe Bradley

☎ 410.494.4892

✉ jbradley@mackenziecommercial.com

MacKenzie Commercial Real Estate Services, LLC • 410-821-8585 • 2328 W. Joppa Road, Suite 200 | Lutherville-Timonium, Maryland 21093 • www.MACKENZIECOMMERCIAL.com

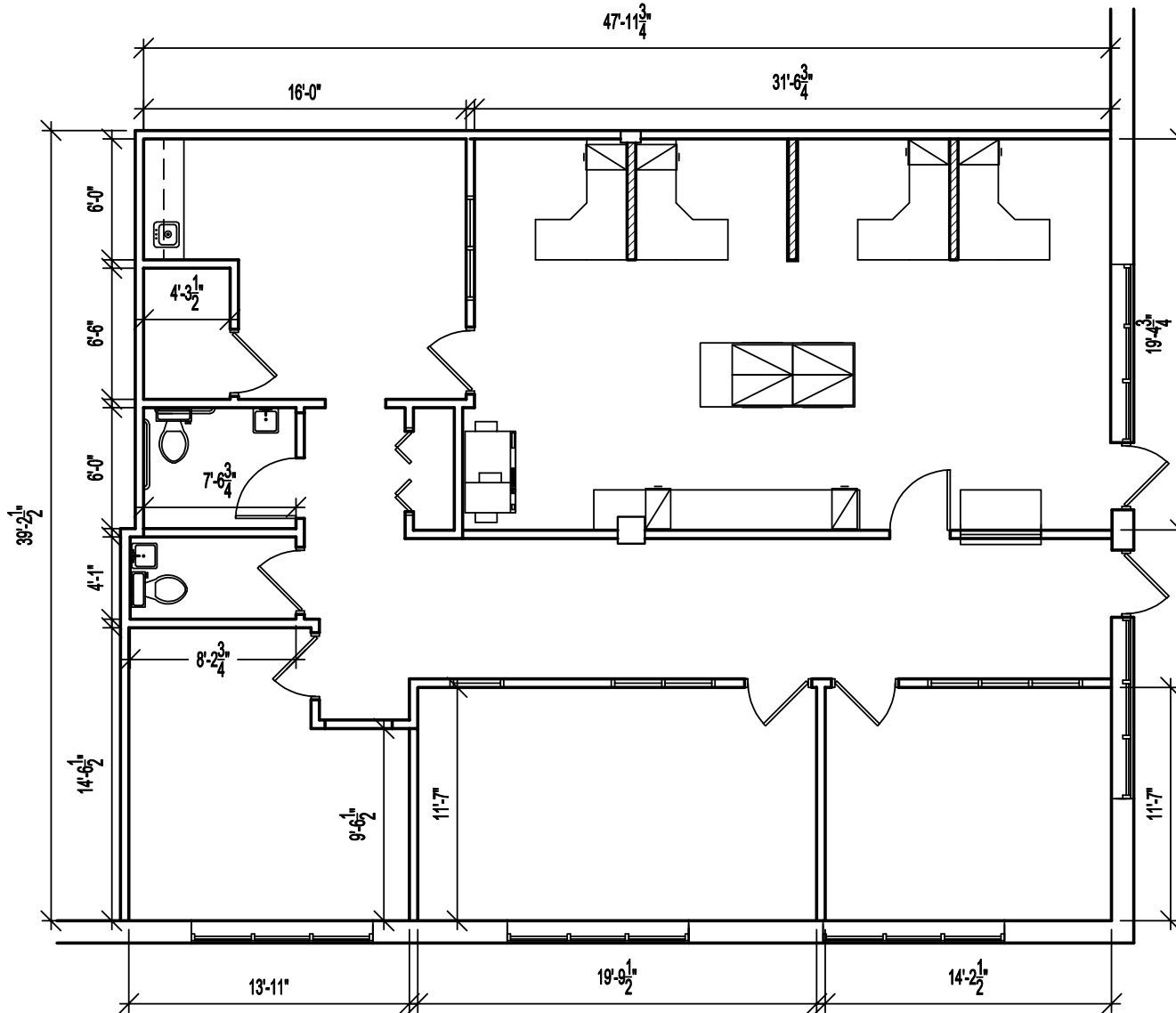
FOR LEASE

Baltimore County, MD

FLOOR PLAN

CHARLESWOOD BUILDING | 8422 BELLONA LANE | TOWSON, MARYLAND, 21204

Suite 200
2,000 sf



FOR LEASE

Baltimore County, MD

DRIVE TIME/LOCATION

CHARLESWOOD BUILDING | 8422 BELLONA LANE | TOWSON, MARYLAND 21204

