

# FOR LEASE

 Baltimore County, MD

# NORTH PARK BUSINESS COMMUNITY

4 NORTH PARK DRIVE | HUNT VALLEY, MARYLAND 21030

## AVAILABLE

First floor: Up to 4,016 sf  
Second floor: 2,154 sf - 5,255 sf  
Fourth floor: 4,402 sf (Available 4/1/2021)

## LEASE TERM

5 years

## RENTAL RATE

\$24.50/sf, Full Service

## PARKING

4.00/1,000 sf

## HIGHLIGHTS

- ▶ Immediately adjacent to the Shawan Plaza and Starbucks
- ▶ Located in a five-building corporate campus
- ▶ Surrounded by many fine restaurants, shops, hotels, the Oregon Ridge Park, Hunt Valley Towne Centre, and desirable residential communities
- ▶ Convenient to the beltway, Downtown Baltimore, and BWI Airport
- ▶ Equipped with modern office systems including multi-zoned HVAC systems, elevators, and security and life-safety equipment



**Bill Whitty**

☎ 410.494.4862

✉ bwhitty@mackenziecommercial.com

MacKenzie Commercial Real Estate Services, LLC

**Joe Bradley**

☎ 410.494.4892

✉ jbradley@mackenziecommercial.com

**Dylan Bozel**

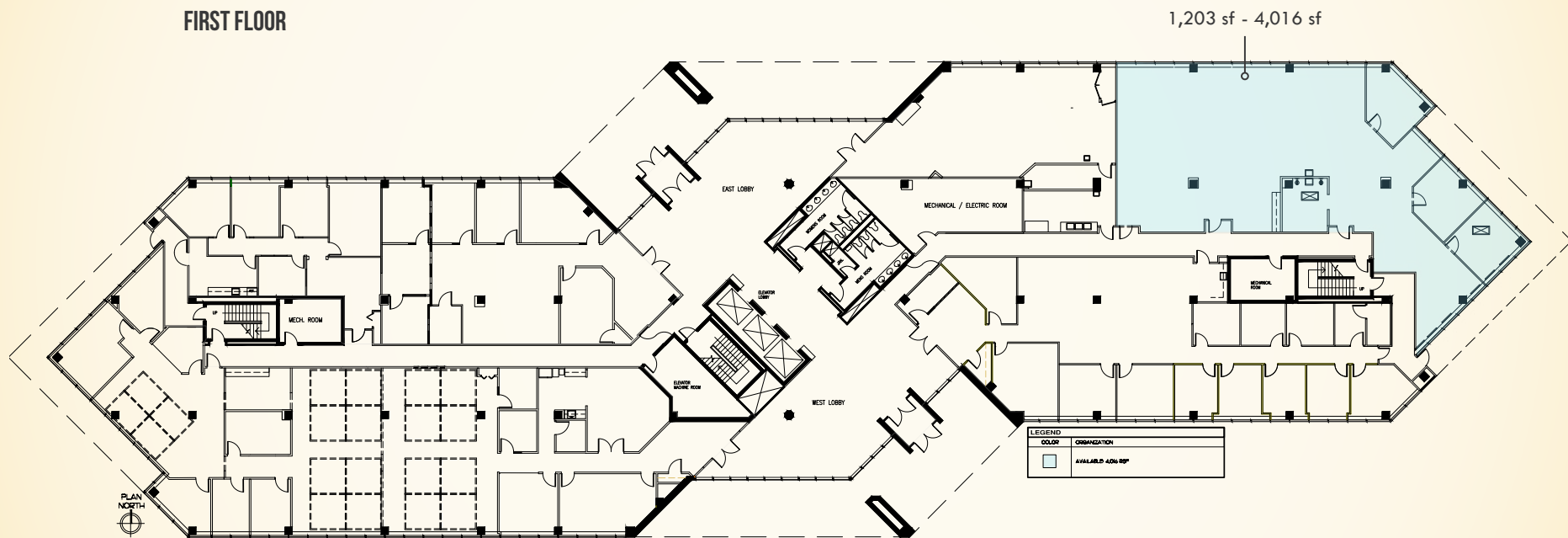
☎ 410.494.4896

✉ dbozel@mackenziecommercial.com

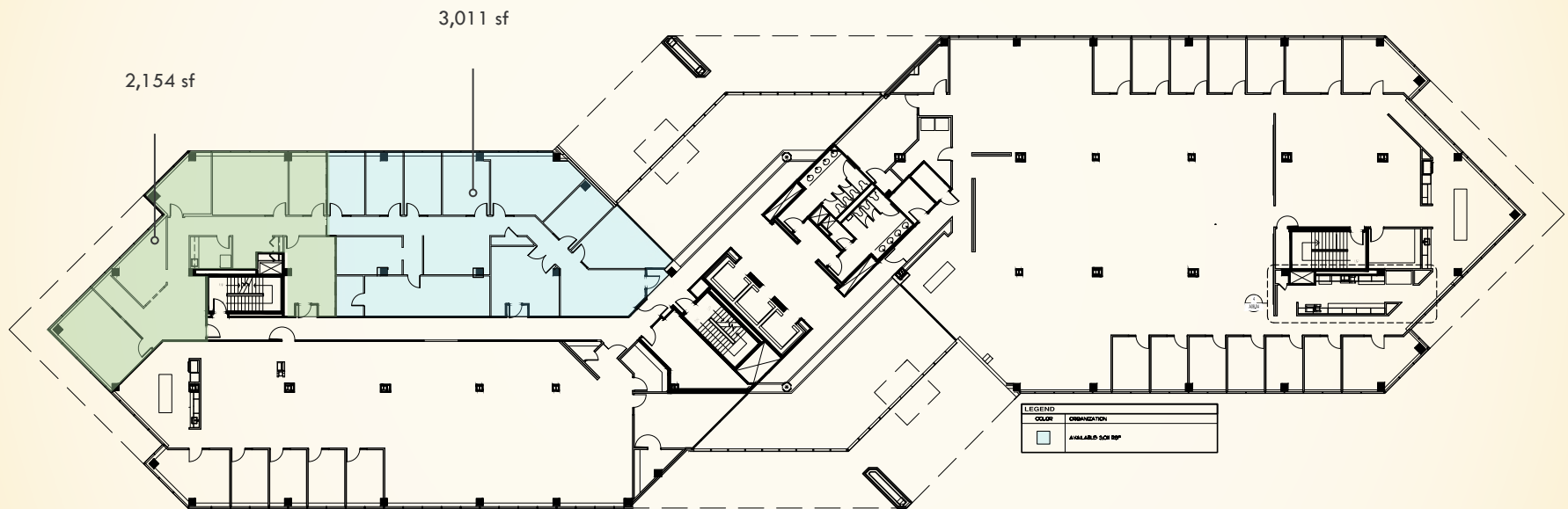
MacKenzie Commercial Real Estate Services, LLC • 410-821-8585 • 2328 W. Joppa Road, Suite 200 | Lutherville-Timonium, Maryland 21093 • [www.MACKENZIECOMMERCIAL.com](http://www.MACKENZIECOMMERCIAL.com)



## FIRST FLOOR



## SECOND FLOOR





**Baltimore County, MD**

[illegible]

4,402 sf



## Bill Whitty

**☎ 410.494.4862**

✉ [bwhitty@mackenziecommercial.com](mailto:bwhitty@mackenziecommercial.com)

**MacKenzie Commercial Real Estate Services, LLC**

## Joe Bradley

**☎ 410.494.4892**

✉ [jbradley@mackenziecommercial.com](mailto:jbradley@mackenziecommercial.com)

Mackenzie Commercial Real Estate Services, LLC • 410-821-8585 • 2328 W. Joppa Road, Suite 200 | Lutherville-Timonium, Maryland 21093 • [www.MACKENZIECOMMERCIAL.com](http://www.MACKENZIECOMMERCIAL.com)

## Dylan Bozel

**☎ 410.494.4896**

 [dbozel@mackenziecommercial.com](mailto:dbozel@mackenziecommercial.com)

Mackenzie Commercial Real Estate Services, LLC • 410-821-8585 • 2328 W. Joppa Road, Suite 200 | Lutherville-Timonium, Maryland 21093 • [www.MACKENZIECOMMERCIAL.com](http://www.MACKENZIECOMMERCIAL.com)