

# FOR LEASE

 Baltimore County, MD

## AVAILABLE

Third floor: 2,715 sf

## LEASE TERM

5 years

## RENTAL RATE

\$24.50/sf, Full Service

## PARKING

3.80/1,000 sf

## HIGHLIGHTS

- ▶ Immediately adjacent to the Shawan Plaza and Starbucks
- ▶ Located in a five-building corporate campus
- ▶ Surrounded by many fine restaurants, shops, hotels, the Oregon Ridge Park, Hunt Valley Towne Centre, and desirable residential communities
- ▶ Convenient to the beltway, Downtown Baltimore, and BWI Airport
- ▶ Equipped with modern office systems including multi-zoned HVAC systems, elevators, and security and life-safety equipment

# NORTH PARK BUSINESS COMMUNITY

10 NORTH PARK DRIVE | HUNT VALLEY, MARYLAND 21030



**Bill Whitty**

☎ 410.494.4862

✉ bwhitty@mackenziecommercial.com

MacKenzie Commercial Real Estate Services, LLC

**Joe Bradley**

☎ 410.494.4892

✉ jbradley@mackenziecommercial.com

• 410-821-8585

• 2328 W. Joppa Road, Suite 200 | Lutherville-Timonium, Maryland 21093

**Dylan Bozel**

☎ 410.494.4896

✉ dbozel@mackenziecommercial.com

• www.MACKENZIECOMMERCIAL.com

# FOR LEASE

Baltimore County, MD

## FLOOR PLAN

NORTH PARK BUSINESS COMMUNITY | 10 NORTH PARK DRIVE | HUNT VALLEY, MARYLAND 21030



**Bill Whitty**

☎ 410.494.4862

✉ [bwhitty@mackenziecommercial.com](mailto:bwhitty@mackenziecommercial.com)

MacKenzie Commercial Real Estate Services, LLC

**Joe Bradley**

☎ 410.494.4892

✉ [jbradley@mackenziecommercial.com](mailto:jbradley@mackenziecommercial.com)

MacKenzie Commercial Real Estate Services, LLC • 410-821-8585 • 2328 W. Joppa Road, Suite 200 | Lutherville-Timonium, Maryland 21093 • [www.MACKENZIECOMMERCIAL.com](http://www.MACKENZIECOMMERCIAL.com)

**Dylan Bozel**

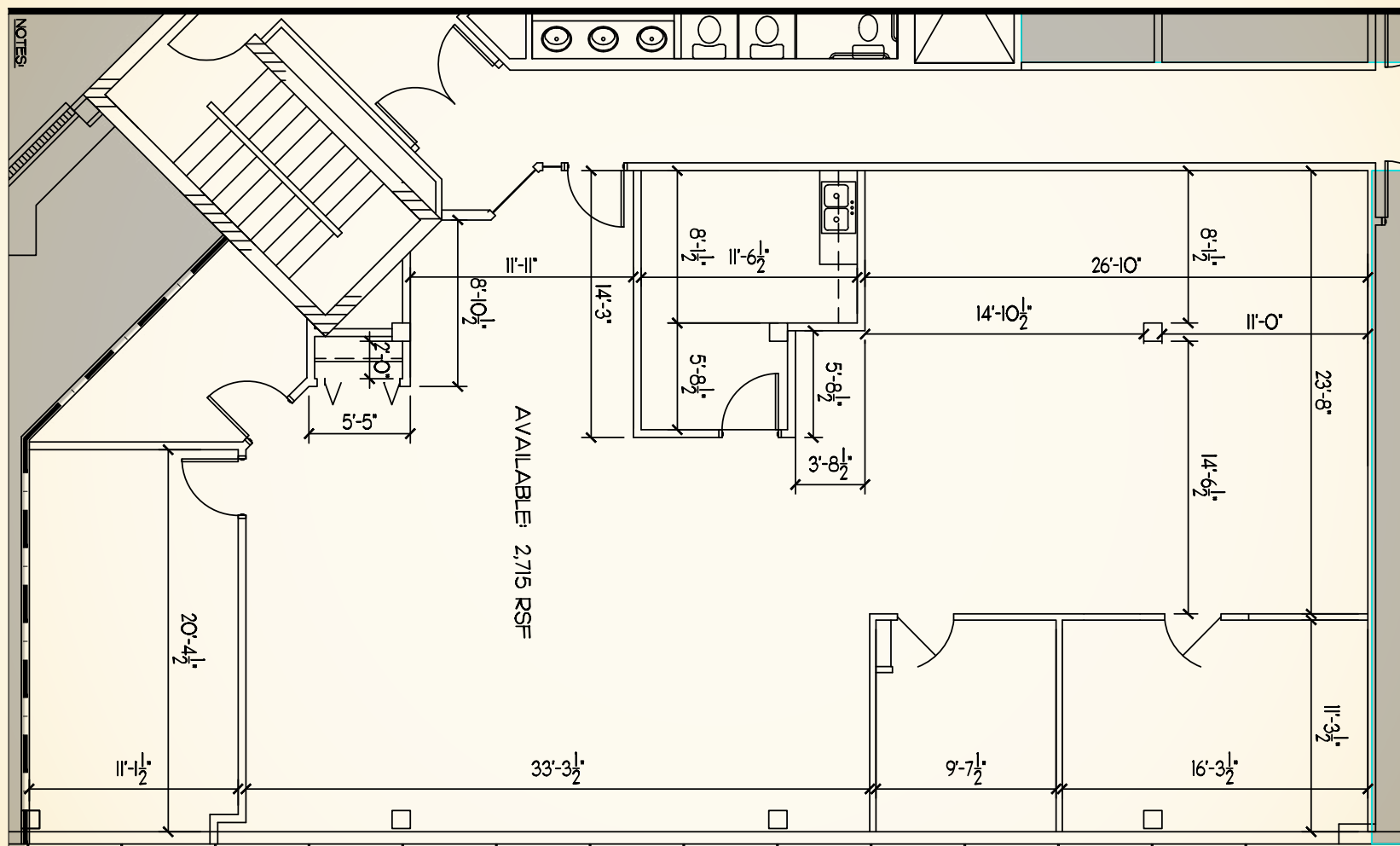
☎ 410.494.4896

✉ [dbozel@mackenziecommercial.com](mailto:dbozel@mackenziecommercial.com)



**Baltimore County, MD**

**NORTH PARK BUSINESS COMMUNITY | 10 NORTH PARK DRIVE | HUNT VALLEY, MARYLAND 21030**



## Bill Whitty

**☎ 410.494.4862**

✉ [bwhitty@mackenziecommercial.com](mailto:bwhitty@mackenziecommercial.com)

**MacKenzie Commercial Real Estate Services, LLC**

## Joe Bradley

**☎ 410.494.4892**

✉ [jbradley@mackenziecommercial.com](mailto:jbradley@mackenziecommercial.com)

Mackenzie Commercial Real Estate Services, LLC • 410-821-8585 • 2328 W. Joppa Road, Suite 200 | Lutherville-Timonium, Maryland 21093 • [www.MACKENZIECOMMERCIAL.com](http://www.MACKENZIECOMMERCIAL.com)

## Dylan Bozel

**☎ 410.494.4896**

 [dbozel@mackenziecommercial.com](mailto:dbozel@mackenziecommercial.com)

onium, Maryland 21093 • [www.MACKENZIECOMMERCIAL.com](http://www.MACKENZIECOMMERCIAL.com)