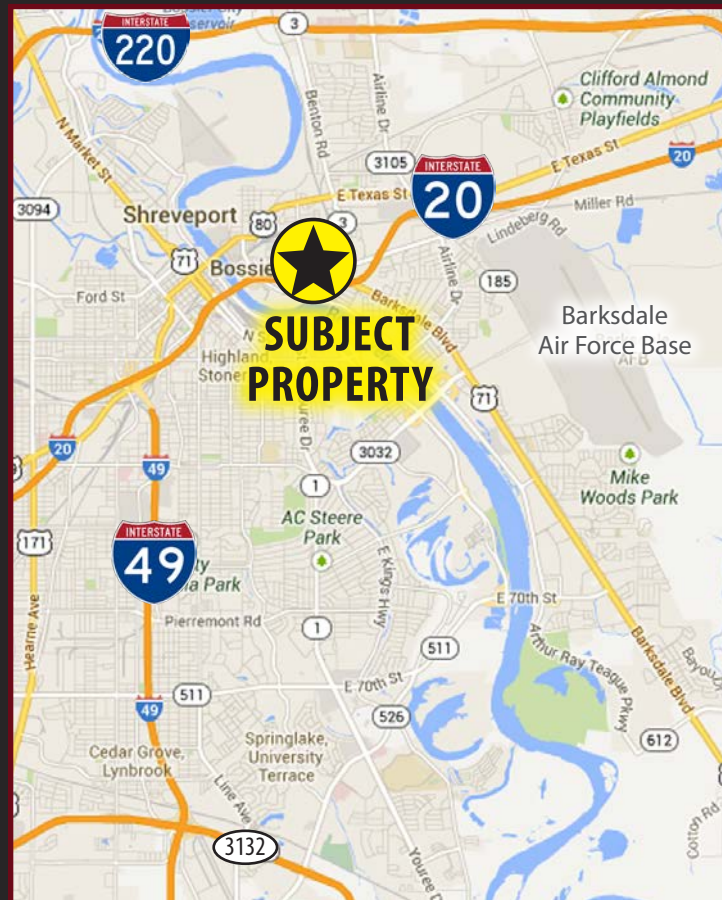




PROFESSIONAL OFFICE BUILDING FOR LEASE

1325 BARKSDALE BLVD. BOSSIER CITY, LA 71111

- Professional Office Building For Lease
- 5,730 square feet available - Subdividable
- Convenient Location One Block North of I-20
- Just East of Downtown Bossier Re-Envisioning Multimillion Dollar Development
- Large Parking Lot Offers Ample Free Parking
- Full Service Gross Lease
- Local Ownership and Management
- Competitive Lease Rates



For more information, contact:

Hilary Bransford | 318.222.2244 | hbransford@vintagerealty.com

ALL INFORMATION CONTAINED HEREIN IS BELIEVED TO BE ACCURATE, BUT IS NOT WARRANTED AND NO LIABILITY OF ERRORS OR OMISSIONS IS ASSURED BY EITHER THE PROPERTY OWNER OR VINTAGE REALTY COMPANY OR ITS AGENTS AND EMPLOYEES. PRICES AS STATED HEREIN AND PRODUCT AVAILABILITY IS SUBJECT TO CHANGE AND/OR SALE OR LEASE WITHOUT PRIOR NOTICE, AND ALL SIZES AND DIMENSIONS ARE SUBJECT TO CORRECTION. REV 5/2020



PROFESSIONAL OFFICE BUILDING FOR LEASE

1325 BARKSDALE BLVD.
BOSSIER CITY, LA 71111



For more information, contact:

Hilary Bransford | 318-222-2244

hbransford@vintagerealty.com | vintagerealty.com

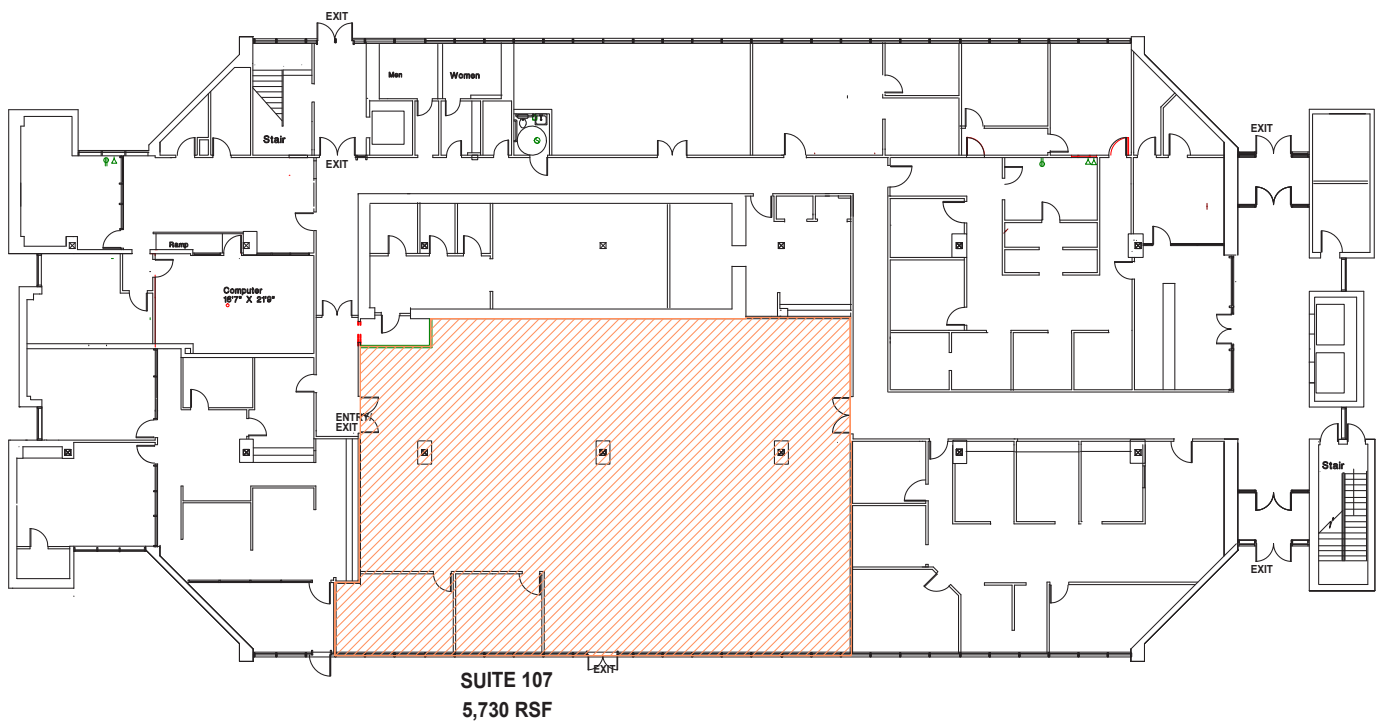
ALL INFORMATION CONTAINED HEREIN IS BELIEVED TO BE ACCURATE, BUT IS NOT WARRANTED AND NO LIABILITY OF ERRORS OR OMISSIONS IS ASSURED BY EITHER THE PROPERTY OWNER OR VINTAGE REALTY COMPANY OR ITS AGENTS AND EMPLOYEES. PRICES AS STATED HEREIN AND PRODUCT AVAILABILITY IS SUBJECT TO CHANGE AND/OR SALE OR LEASE WITHOUT PRIOR NOTICE, AND ALL SIZES AND DIMENSIONS ARE SUBJECT TO CORRECTION. 5/2020

PROFESSIONAL OFFICE BUILDING FOR LEASE

1325 BARKSDALE BLVD.
BOSSIER CITY, LA 71111

Floor Plan: 5,730 Square Feet Available

May Be Subdivided



For more information, contact:

Hilary Bransford | 318-222-2244

hbransford@vintagerealty.com | vintagerealty.com

ALL INFORMATION CONTAINED HEREIN IS BELIEVED TO BE ACCURATE, BUT IS NOT WARRANTED AND NO LIABILITY OF ERRORS OR OMISSIONS IS ASSURED BY EITHER THE PROPERTY OWNER OR VINTAGE REALTY COMPANY OR ITS AGENTS AND EMPLOYEES. PRICES AS STATED HEREIN AND PRODUCT AVAILABILITY IS SUBJECT TO CHANGE AND/OR SALE OR LEASE WITHOUT PRIOR NOTICE, AND ALL SIZES AND DIMENSIONS ARE SUBJECT TO CORRECTION. 5/2020