

# FOR LEASE

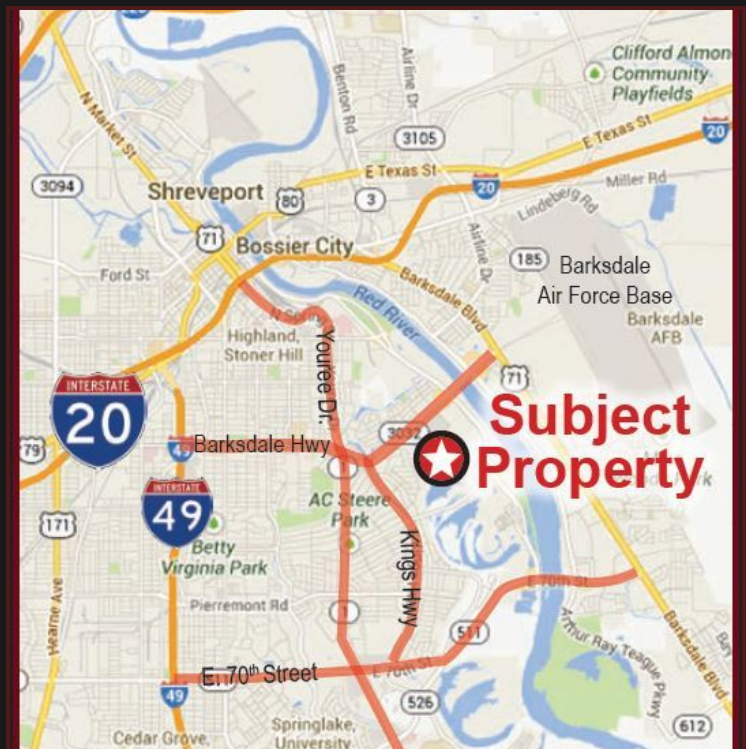
## SOUTHPOINTE CENTER

3007 KNIGHT STREET, SHREVEPORT, LA 71105



### PROPERTY HIGHLIGHTS

- Convenient Location With Great Accessibility To Both Shreveport And Bossier City
- Approximately 984 to 1,184 SF Available
- Professional Office Space Available
- T1, DSL, Fiber Connectivity
- Exterior Signage Available
- Beautiful Architectural Renovation Complete



For More Information, Contact:

**Hilary Bransford**

**O: 318.212.1627**

**C: 318.458.5972**

**hbransford@vintagerealty.com**

**Claire Childs**

**O: 318.212.1671**

**C: 318.458.5851**

**cchilds@vintagerealty.com**

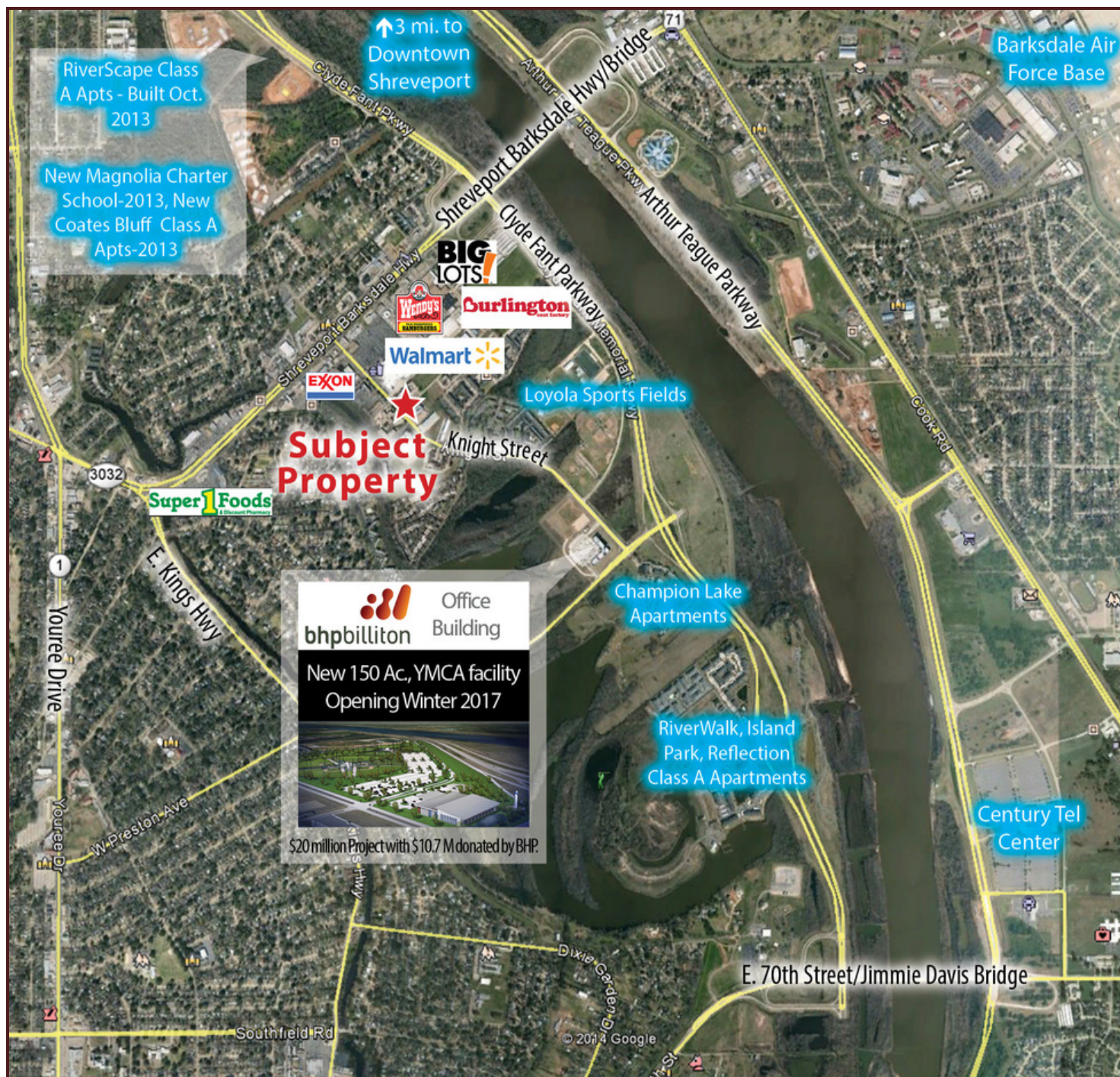
All Information Contained Herein Is Believed To Be Accurate, But Is Not Warranted And No Liability Of Errors Or Omissions Is Assured By Either The Property Owner Or Vintage Realty Company Or Its Agents And Employees. Prices As Stated Herein And Product Availability Is Subject To Change And/Or Sale Or Lease Without Prior Notice, And All Sizes And Dimensions Are Subject To Correction.  
Rev 08/2017



**FOR LEASE**

# SOUTHPOINTE CENTER

3007 KNIGHT STREET, SHREVEPORT, LA 71105



For More Information, Contact:

**Hilary Bransford**

**O: 318.212.1627**

**C: 318.458.5972**

**hbransford@vintagerealty.com**

**Claire Childs**

**O: 318.212.1671**

**C: 318.458.5851**

**cchilds@vintagerealty.com**

All Information Contained Herein Is Believed To Be Accurate, But Is Not Warranted And No Liability Of Errors Or Omissions Is Assured By Either The Property Owner Or Vintage Realty Company Or Its Agents And Employees. Prices As Stated Herein And Product Availability Is Subject To Change And/Or Sale Or Lease Without Prior Notice, And All Sizes And Dimensions Are Subject To Correction.

Rev 08/2017

  
**VINTAGE**  
REALTY COMPANY  
318.222.2244