



RESTAURANT BUILDING FOR SALE

641 E. KINGS HIGHWAY, SHREVEPORT, LA 71105

- 3,982 square foot Mexican Restaurant for Sale
- Turn Key Business including all FF & E, Inventory and Supplies
- Successfully owned and operated for 26 years
- Large parking lot
- Multiple dining areas - private party room
- Large bar
- Financials available upon request
- Zoned C-2
- Traffic Count: E.Kings & Youree 46,981 cars per day



DEMOGRAPHICS

Radius	Population	Avg HH Income	# of Households
1 mile	10,019	\$60,798	4,258
3 mile	70,212	\$61,835	29,962
5 mile	159,699	\$57,474	65,764

For more information, contact:

Brad Armstrong, Associate Broker | 318-222-2244

barmstrong@vintagerealty.com | vintagerealty.com

ALL INFORMATION CONTAINED HEREIN IS BELIEVED TO BE ACCURATE, BUT IS NOT WARRANTED AND NO LIABILITY OF ERRORS OR OMISSIONS IS ASSURED BY EITHER THE PROPERTY OWNER OR VINTAGE REALTY COMPANY OR ITS AGENTS AND EMPLOYEES. PRICES AS STATED HEREIN AND PRODUCT AVAILABILITY IS SUBJECT TO CHANGE AND/OR SALE OR LEASE WITHOUT PRIOR NOTICE, AND ALL SIZES AND DIMENSIONS ARE SUBJECT TO CORRECTION. REV 1/2021



RESTAURANT BUILDING FOR SALE

641 E. KINGS HWY
SHREVEPORT, LA 71105



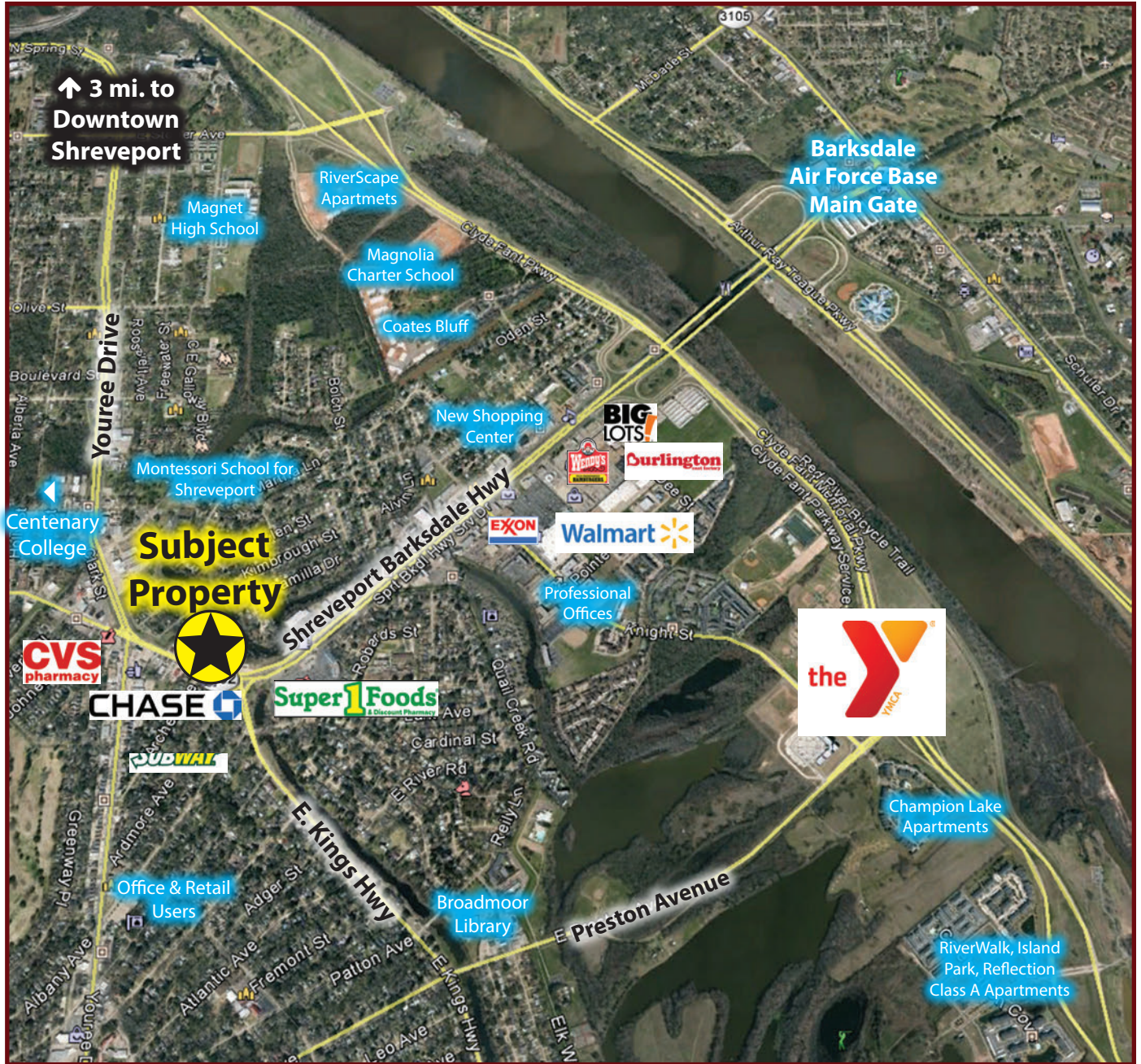
For more information, contact:

Brad Armstrong, Associate Broker | 318-222-2244
barmstrong@vintagerealty.com | vintagerealty.com

ALL INFORMATION CONTAINED HEREIN IS BELIEVED TO BE ACCURATE, BUT IS NOT WARRANTED AND NO LIABILITY OF ERRORS OR OMISSIONS IS ASSURED BY EITHER THE PROPERTY OWNER OR VINTAGE REALTY COMPANY OR ITS AGENTS AND EMPLOYEES. PRICES AS STATED HEREIN AND PRODUCT AVAILABILITY IS SUBJECT TO CHANGE AND/OR SALE OR LEASE WITHOUT PRIOR NOTICE, AND ALL SIZES AND DIMENSIONS ARE SUBJECT TO CORRECTION. 1/2021

RESTAURANT BUILDING FOR SALE

641 E. KINGS HWY
SHREVEPORT, LA 71105



For more information, contact:

Brad Armstrong, Associate Broker | 318-222-2244
barmstrong@vintagerealty.com | vintagerealty.com

ALL INFORMATION CONTAINED HEREIN IS BELIEVED TO BE ACCURATE, BUT IS NOT WARRANTED AND NO LIABILITY OF ERRORS OR OMISSIONS IS ASSURED BY EITHER THE PROPERTY OWNER OR VINTAGE REALTY COMPANY OR ITS AGENTS AND EMPLOYEES. PRICES AS STATED HEREIN AND PRODUCT AVAILABILITY IS SUBJECT TO CHANGE AND/OR SALE OR LEASE WITHOUT PRIOR NOTICE, AND ALL SIZES AND DIMENSIONS ARE SUBJECT TO CORRECTION. 1/2021

RESTAURANT BUILDING FOR SALE

641 E. KINGS HWY
SHREVEPORT, LA 71105



For more information, contact:

Brad Armstrong, Associate Broker | 318-222-2244
barmstrong@vintagerealty.com | vintagerealty.com

ALL INFORMATION CONTAINED HEREIN IS BELIEVED TO BE ACCURATE, BUT IS NOT WARRANTED AND NO LIABILITY OF ERRORS OR OMISSIONS IS ASSURED BY EITHER THE PROPERTY OWNER OR VINTAGE REALTY COMPANY OR ITS AGENTS AND EMPLOYEES. PRICES AS STATED HEREIN AND PRODUCT AVAILABILITY IS SUBJECT TO CHANGE AND/OR SALE OR LEASE WITHOUT PRIOR NOTICE, AND ALL SIZES AND DIMENSIONS ARE SUBJECT TO CORRECTION. 1/2021