



COMMERCIAL BUILDING FOR SALE

9107 INDUSTRIAL ROAD, SHREVEPORT, LA 71118

- 6,909 square foot former Daycare facility - could be converted to office use
- Sale Price: \$395,000
- 2.4 acres of land
- Large open offices
- Commercial kitchen
- Multiple bathrooms



For more information, contact:

Brad Armstrong, Associate Broker | 318-222-2244

barmstrong@vintagerealty.com | vintagerealty.com

ALL INFORMATION CONTAINED HEREIN IS BELIEVED TO BE ACCURATE, BUT IS NOT WARRANTED AND NO LIABILITY OF ERRORS OR OMISSIONS IS ASSURED BY EITHER THE PROPERTY OWNER OR VINTAGE REALTY COMPANY OR ITS AGENTS AND EMPLOYEES. PRICES AS STATED HEREIN AND PRODUCT AVAILABILITY IS SUBJECT TO CHANGE AND/OR SALE OR LEASE WITHOUT PRIOR NOTICE, AND ALL SIZES AND DIMENSIONS ARE SUBJECT TO CORRECTION. REV 11/2020



COMMERCIAL BUILDING FOR SALE

9107 INDUSTRIAL ROAD
SHREVEPORT, LA 71118



For information, please contact:

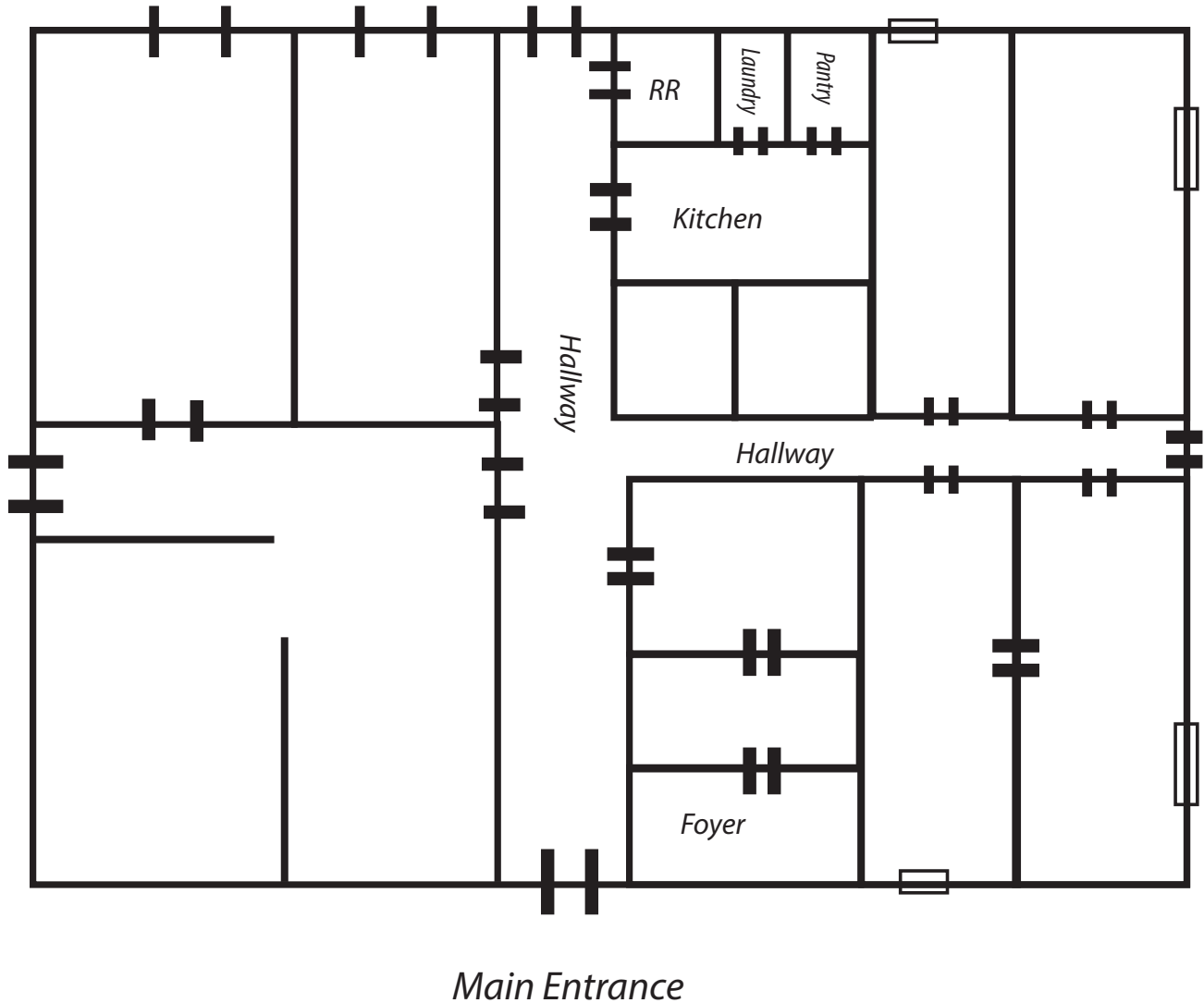
Brad Armstrong, Associate Broker | 318-222-2244
barmstrong@vintagerealty.com | vintagerealty.com

ALL INFORMATION CONTAINED HEREIN IS BELIEVED TO BE ACCURATE, BUT IS NOT WARRANTED AND NO LIABILITY OF ERRORS OR OMISSIONS IS ASSURED BY EITHER THE PROPERTY OWNER OR VINTAGE REALTY COMPANY OR ITS AGENTS AND EMPLOYEES. PRICES AS STATED HEREIN AND PRODUCT AVAILABILITY IS SUBJECT TO CHANGE AND/OR SALE OR LEASE WITHOUT PRIOR NOTICE, AND ALL SIZES AND DIMENSIONS ARE SUBJECT TO CORRECTION. 11/2020

COMMERCIAL BUILDING FOR SALE

9107 INDUSTRIAL ROAD
SHREVEPORT, LA 71118

FLOOR PLAN



For information, please contact:

Brad Armstrong, Associate Broker | 318-222-2244
barmstrong@vintagerealty.com | vintagerealty.com

ALL INFORMATION CONTAINED HEREIN IS BELIEVED TO BE ACCURATE, BUT IS NOT WARRANTED AND NO LIABILITY OF ERRORS OR OMISSIONS IS ASSURED BY EITHER THE PROPERTY OWNER OR VINTAGE REALTY COMPANY OR ITS AGENTS AND EMPLOYEES. PRICES AS STATED HEREIN AND PRODUCT AVAILABILITY IS SUBJECT TO CHANGE AND/OR SALE OR LEASE WITHOUT PRIOR NOTICE, AND ALL SIZES AND DIMENSIONS ARE SUBJECT TO CORRECTION. 11/2020